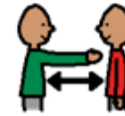


Restrictions in Scotland



Face Coverings Avoid Crowded Places Clean hands and surfaces Physical distancing



Inside people's homes



Do not go into other's homes except extended households.



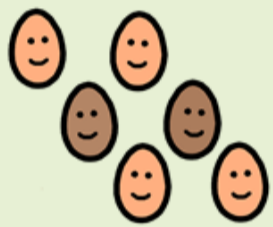
Children can move between parents' homes if they live separately.



These rules apply to all ages.



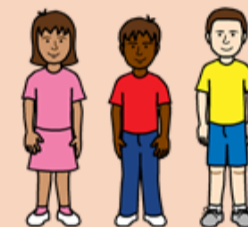
Private gardens or public outdoor spaces



A maximum of 6 people can meet together outside.



A maximum of 2 households can meet together outside.



Under 12s do not count towards households or number of people.



Under 12s do not have to physically distance.



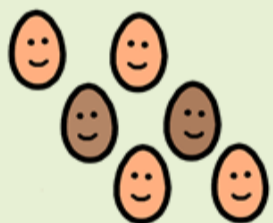
12-17 year olds can meet in groups of 6 at most with no household limits.



12-17 year olds need to physically distance.



Indoors in public spaces.



A maximum of 6 people can meet together indoors in public spaces.



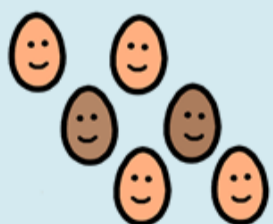
A maximum of 2 households can meet together indoors in public spaces.



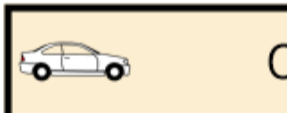
Under 12s do not count towards limits.



Hospitality



A maximum of 6 people can meet together indoors in public spaces.



Car Sharing



Only car share with own household or extended household.



Working



Work from home where practical,



close at 10pm



Follow guidance when no alternative.



Extended Household



an adult living alone



a couple who do not live together



single parent family

