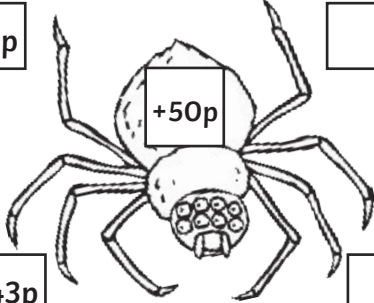


Spider Mental Money Addition

Complete these quick spider sums. Look carefully what you need to add to the money each time. Write the answer in the box.



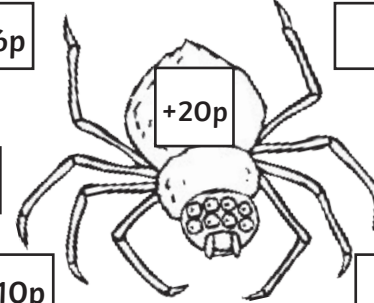
22p

18p

43p

11p

+50p



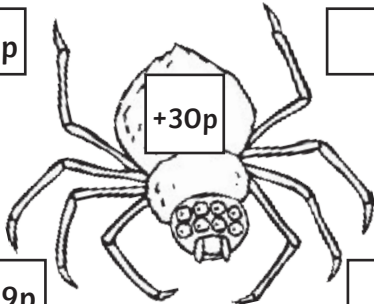
36p

9p

10p

60p

+20p



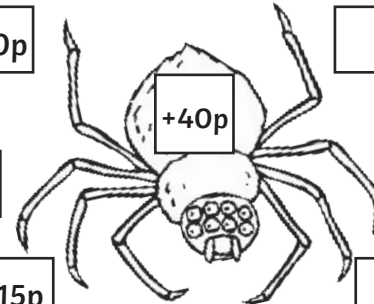
52p

27p

19p

6p

+30p



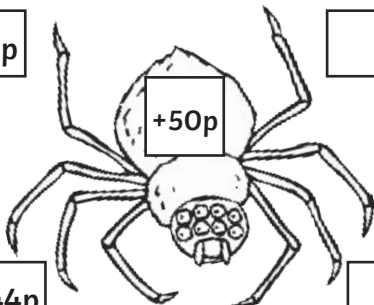
60p

38p

15p

34p

+40p



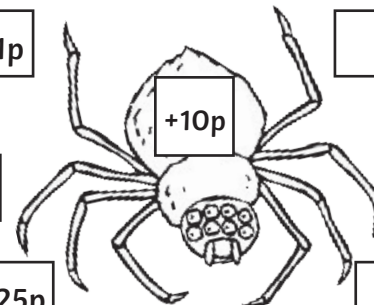
22p

80p

44p

16p

+50p



41p

58p

25p

74p

+10p

Spider Mental Money Addition

Complete these quick spider sums. Look carefully what you need to add to the money each time. Write the answer in the box.

A spider diagram with a central body labeled $+50p$. It has eight legs, each with a small box. The boxes contain the following values: top-left (£1), top-right (), middle-left (88p), middle-right (), bottom-left (£2), bottom (47p), and bottom-right ().

A spider diagram with a central body labeled $+60p$. It has eight legs, each with a small box. The boxes contain the following values: top-left (89p), top-right (), middle-left (57p), middle-right (), bottom-left (66p), bottom (93p), and bottom-right ().

A spider diagram with a central body labeled $+40p$. It has eight legs, each with a small box. The boxes contain the following values: top-left (£1.10), top-right (), middle-left (79p), middle-right (), bottom-left (43p), bottom (86p), and bottom-right ().

A spider diagram with a central body labeled $+15p$. It has eight legs, each with a small box. The boxes contain the following values: top-left (46p), top-right (), middle-left (81p), middle-right (), bottom-left (96p), bottom (£1.50), and bottom-right ().

A spider diagram with a central body labeled $+70p$. It has eight legs, each with a small box. The boxes contain the following values: top-left (£1.20), top-right (), middle-left (£1.33), middle-right (), bottom-left (£1.65), bottom (94p), and bottom-right ().

A spider diagram with a central body labeled $+20p$. It has eight legs, each with a small box. The boxes contain the following values: top-left (£1.76), top-right (), middle-left (£1.29), middle-right (), bottom-left (£1.54), bottom (£1.30), and bottom-right ().

Spider Mental Money Addition

Complete these quick spider sums. Look carefully what you need to add to the money each time. Write the answer in the box.

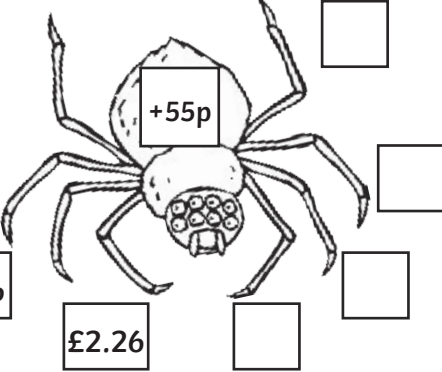
£2.34

£5.23

£1.66

£2.26

+55p



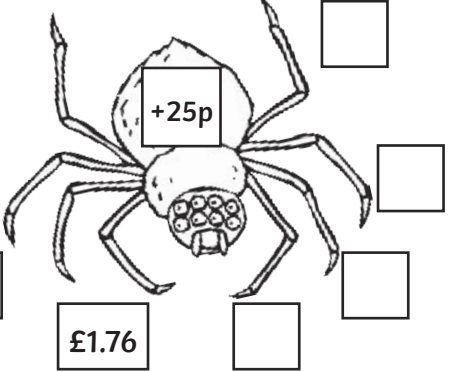
£2.16

£3.33

£4.00

£1.76

+25p



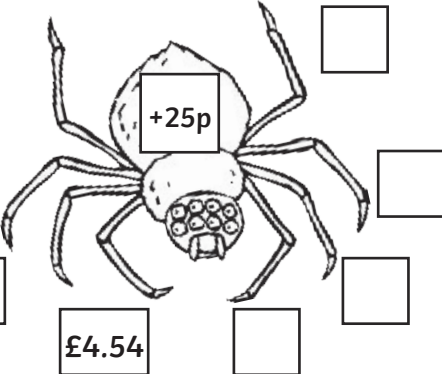
£3.67

£2.66

£1.21

£4.54

+25p



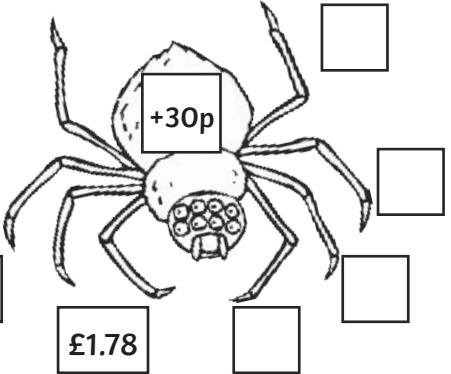
£2.87

£2.76

£3.00

£1.78

+30p



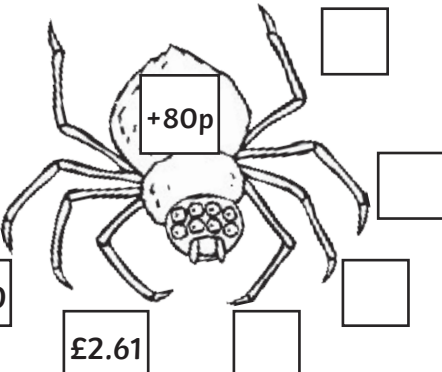
£2.34

£1.11

£4.10

£2.61

+80p



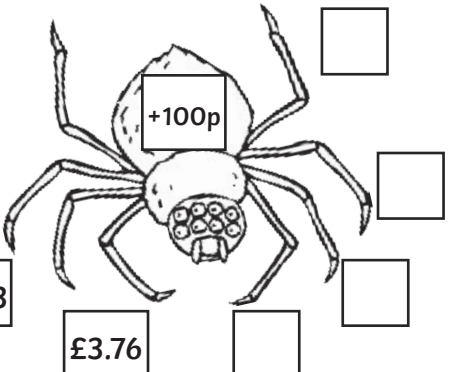
£1.22

£5.10

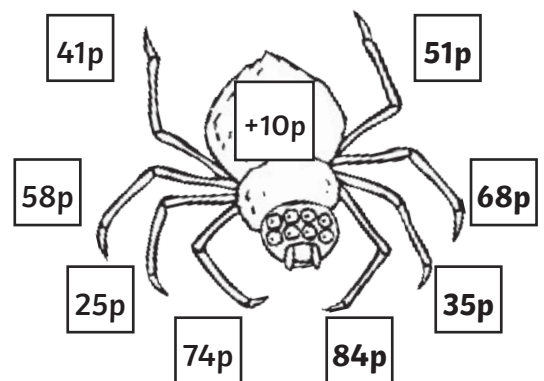
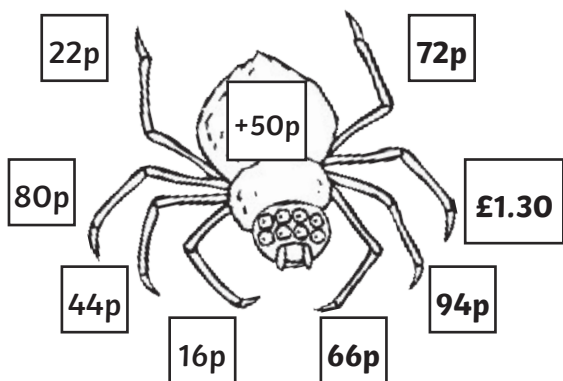
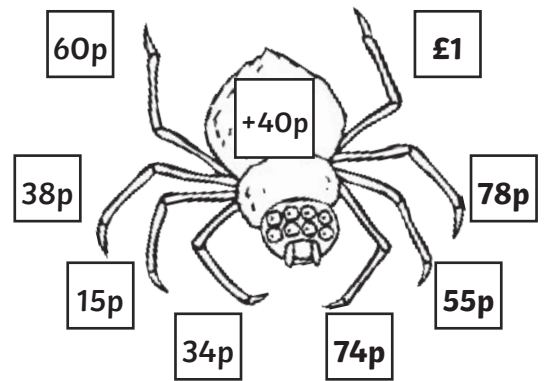
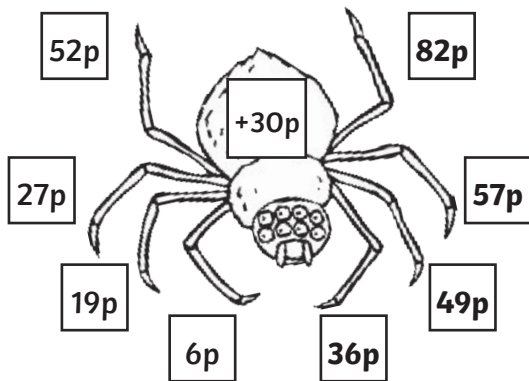
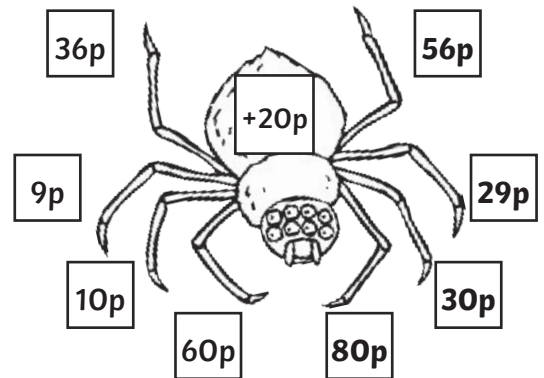
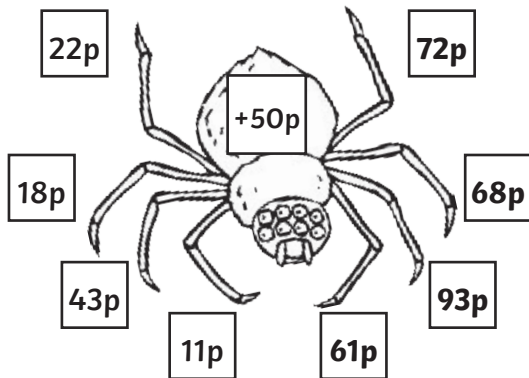
£2.43

£3.76

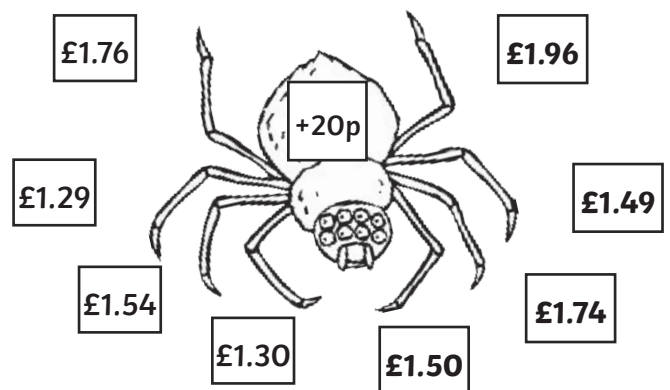
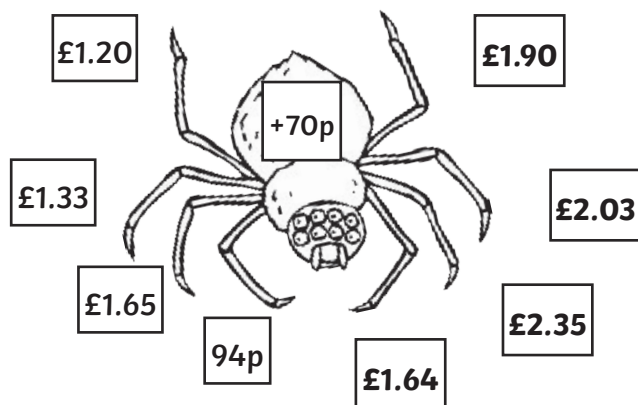
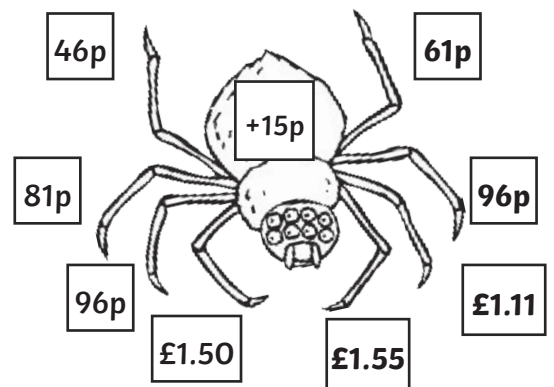
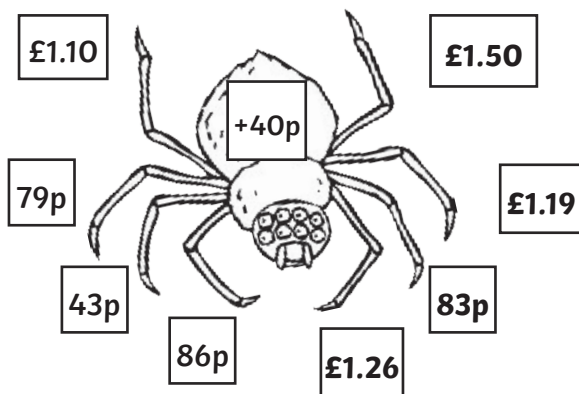
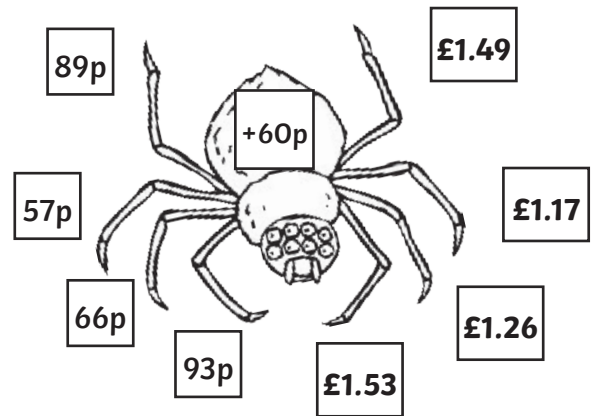
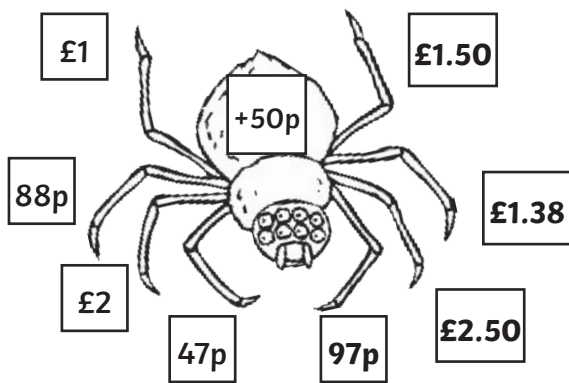
+100p



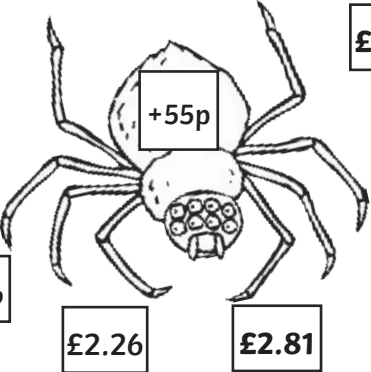
Spider Mental Money Addition Answers



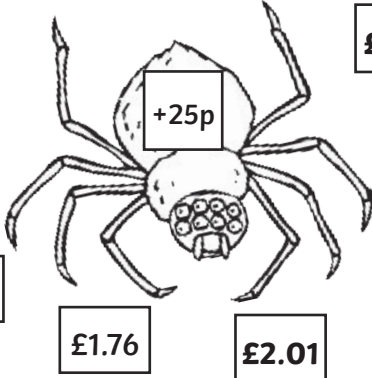
Spider Mental Money Addition Answers



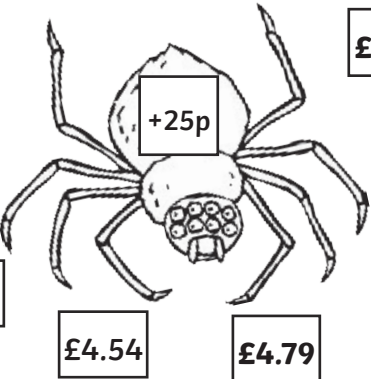
Spider Mental Money Addition Answers



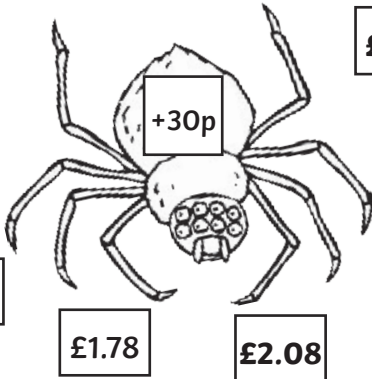
A spider illustration with a box on its back containing the text "+55p". It is surrounded by ten boxes containing the following amounts: £2.34, £2.89, £5.23, £5.78, £1.66, £2.21, £2.26, and £2.81.



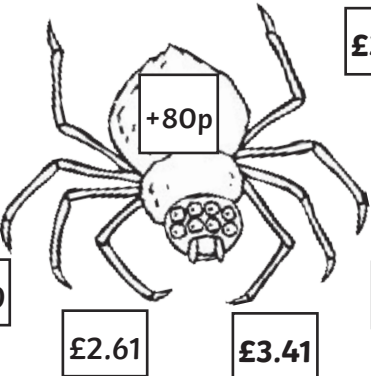
A spider illustration with a box on its back containing the text "+25p". It is surrounded by ten boxes containing the following amounts: £2.16, £2.41, £3.33, £3.58, £4.00, £4.25, £1.76, and £2.01.



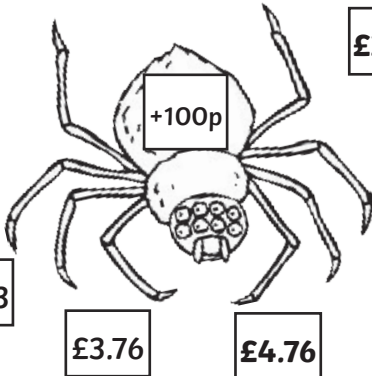
A spider illustration with a box on its back containing the text "+25p". It is surrounded by ten boxes containing the following amounts: £3.67, £3.92, £2.66, £2.91, £1.21, £1.46, £4.54, and £4.79.



A spider illustration with a box on its back containing the text "+30p". It is surrounded by ten boxes containing the following amounts: £2.87, £3.17, £2.76, £3.06, £3.00, £3.30, £1.78, and £2.08.



A spider illustration with a box on its back containing the text "+80p". It is surrounded by ten boxes containing the following amounts: £2.34, £3.14, £1.11, £1.91, £4.10, £4.90, £2.61, and £3.41.



A spider illustration with a box on its back containing the text "+100p". It is surrounded by ten boxes containing the following amounts: £1.22, £2.22, £5.10, £6.10, £2.43, £3.43, £3.76, and £4.76.