



Wellshot Primary Relationship Policy



How we achieve this

Core Values

- Felicity Friendship
- Rory Respect
- Harry Happiness
- Captain Cooperation
- Tommy Trust



Vision

Our vision at Wellshot Primary School is a FAMILY.

Fair and Fun

Achievement for all

Mutual Respect

Inclusive

Learning is challenging

You are nurtured and safe



UNCRC

Wellshot is an accredited Rights Respecting School. We ensure Pupil Voice and Embed Children's Rights



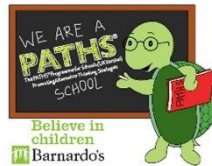
Getting It Right For Every Child

- Inclusion
- Nurture
- Targeted Support
- Growth Mindset
- Makaton
- GDSS
- EAL Support
- Place2Be
- Rise & Shine Club



PATHS

In Wellshot Primary we Promote Alternative Thinking Strategies to support Emotional Literacy.



Restorative Approach

All staff use identical restorative questions to support all pupils when they require it.

- **What happened?**
- **How do you feel?**
- **Was anyone upset by this?**
- **What do you think needs to happen to fix this?**
- **Is there anything we can do to help you right now?**

Nurture Principles

Nurture Principles are embedded in every aspect of school life as we continue to create a safe, welcoming environment for pupils to flourish.



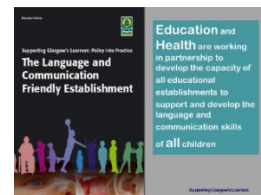
Parental Engagement

Our parents work closely with us to ensure the best support is given at all times.

- Parent Council
- Parent / Carer Days
- Tea with the Teacher
- ESOL
- Parent Helpers
- Fundraising

LCFE

Wellshot is an accredited Language and Communication Friendly Establishment. We make learning visual to allow all to engage fully.



Pupils Lead Across our School

Our Pupils actively engage and lead learning across Wellshot Primary. We have many committees and working parties that shape how our school runs.

- Pupil Captains and Vice Captains
- Pupil Voice Champions
- Primary 7 Buddies
- Pupil Forum Champions
- Pupil Monitors
- LCFE Champions - P2-P7
- Eco Committee and Energy Saving Champions
- PATHS Playground Pals



Celebrating Success

We celebrate every pupil's success whether they happen in or out of school.

Magic Moments House Points Awards Jump for Joy Celebration Tree HT Award
 Values Award Treasure Box Prizes HomeLink Success Charts





Wellshot Primary Relationship Policy



Rationale:

In Wellshot Primary we are committed to providing children with the best possible learning and teaching experiences. We believe that this can be best achieved through building positive relationships across the school community, embedding nurture principles in our daily practice and ensuring a focus on social and emotional wellbeing and an ethos of mutual respect and trust.

"Developing good relationships and positive behaviour in the classroom, playground and wider community is essential for creating the right environment for effective learning and teaching. Where children and young people feel included, respected, safe and secure and when their achievements and contributions are valued and celebrated, they are more likely to develop self-confidence, resilience and positive views about themselves."

Better relationships, better learning, better behaviour Scottish Government 2012

"At the heart of nurture is a focus on wellbeing and relationships and a drive to support the growth and development of children and young people."

Nurture as Whole School Approach

This will be implemented through the Nurturing Principles:

- Children's learning is understood developmentally
- Classroom offers a safe base
- The importance of nurture for the development of wellbeing
- Language is a vital means of communication
- All behaviour is communication
- The importance of transition in children's lives

In creating this policy, we have consulted with staff and children to identify key policy aims and to develop a pro-active approach to developing positive relationships and behaviours between all members of our school community. Pupils, parents, teachers and support staff will take collective responsibility for promoting positive relationships in Wellshot Primary.

Aims of Policy:

- To develop a whole school positive relationships and behaviour policy supported by parents, staff and pupils and underpinned by the school's core values of Respect, Trust, Friendship, Happiness and Cooperation.
- To support staff by providing a clear and consistent framework for promoting positive relationships and by communicating expectations in a clear way.
- To create a safe and positive environment which promotes enjoyment in learning and raises attainment.
- To develop a shared vision and understanding of restorative practices, approaches and methodologies.
- To support pupils in dealing with difficulties and resolving conflict in a positive manner.
- To support children in understanding the impact of their behaviours through restorative conversations.
- To ensure that we work closely with parents at all times to support their child's personal development.