

Curriculum Newsletter

Primary 3-2

Term 1
Autumn 2025

Schools across Scotland follow the *Curriculum for Excellence*, which is divided into eight broad curriculum areas.

The curriculum is divided in to different levels →

Pupils in Nursery and P1 generally work within the *Early* level

Pupils in P2, P3 and P4 generally work within the *First* level

Pupils in P5, P6 and P7 generally work within the *Second* level

Literacy and English

The class will be reading:

Individual Books

PM Guided Reading texts across various levels

Our **Reading** focus will be:

Understanding

Predicting

Sharing likes and dislikes

Features of a book

The genre(s) for our **Writing** focus will be:

Short Story

Recount

We will be looking at features including:

Adjectives

Conjunctions

Common words

Phonics

Punctuation (basic)

Proper nouns

In **Listening and Talking**, we will be developing:

Asking questions

Eye contact

Respectful listening

Retelling stories or events

Numeracy and Mathematics

Our work in **Numeracy** will include:

Addition

Place value (T and u)

Subtraction

Time (calendar)

Our work in **Mathematics** will include:

2D shape (simple criteria)

3D shape (simple criteria)

Patterns (numbers)

Patterns (shape)

Health and Wellbeing

In **PE**, we will be developing our skills in:

Co-ordination

Other

Our PE days are: Tuesday and Friday

PATHS is our main programme for delivering **HWB**.

Relationships, Sexual Health & Parenthood is taught through RSHP.

Other aspects of **HWB** we will look at this term include:

Healthy eating

People who help us

Other Useful Information

Wallacewell Primary School Website - <https://blogs.glowscotland.org.uk/gc/wallacewellprimary/>

Expressive Arts

The **Expressive Arts** are woven across the curriculum.

Art and design

Line drawing

Use of colour

Other

Dance

Drama

Role play

Scripted piece

Music

Singing

Music appreciation

Religious and Moral Education

This term, we will be learning about the following:

Christianity

Seasonal

Autumn Equinox

A range of religious and cultural events are discussed at our weekly assemblies. These will provide opportunities for us to reflect and celebrate our diverse school.

Science / Social Subjects

Our interdisciplinary learning (**IDL**) theme for this term is:

Superheroes & Journeys

We will be studying:

Children will develop skills in technologies through our 'Superheroes' context where we will be looking at the qualities of heroes. This will also allow children to look at fabric choice for designing a 'supersuit'. For journeys, we will be looking at how superheros travel relating this to real life' heroes e.g. police and doctors.

Technologies

Technology is embedded across the curriculum, but we will be developing specific skills and knowledge in:

Construction

Textile work

Use of iPad

You can learn more about teaching and learning at Wallacewell on our website. On our website you can also keep up to day with in class learning.

Wallacewell Primary Family Learning - <https://blogs.glowscotland.org.uk/gc/familylearningatwallacewellps/>

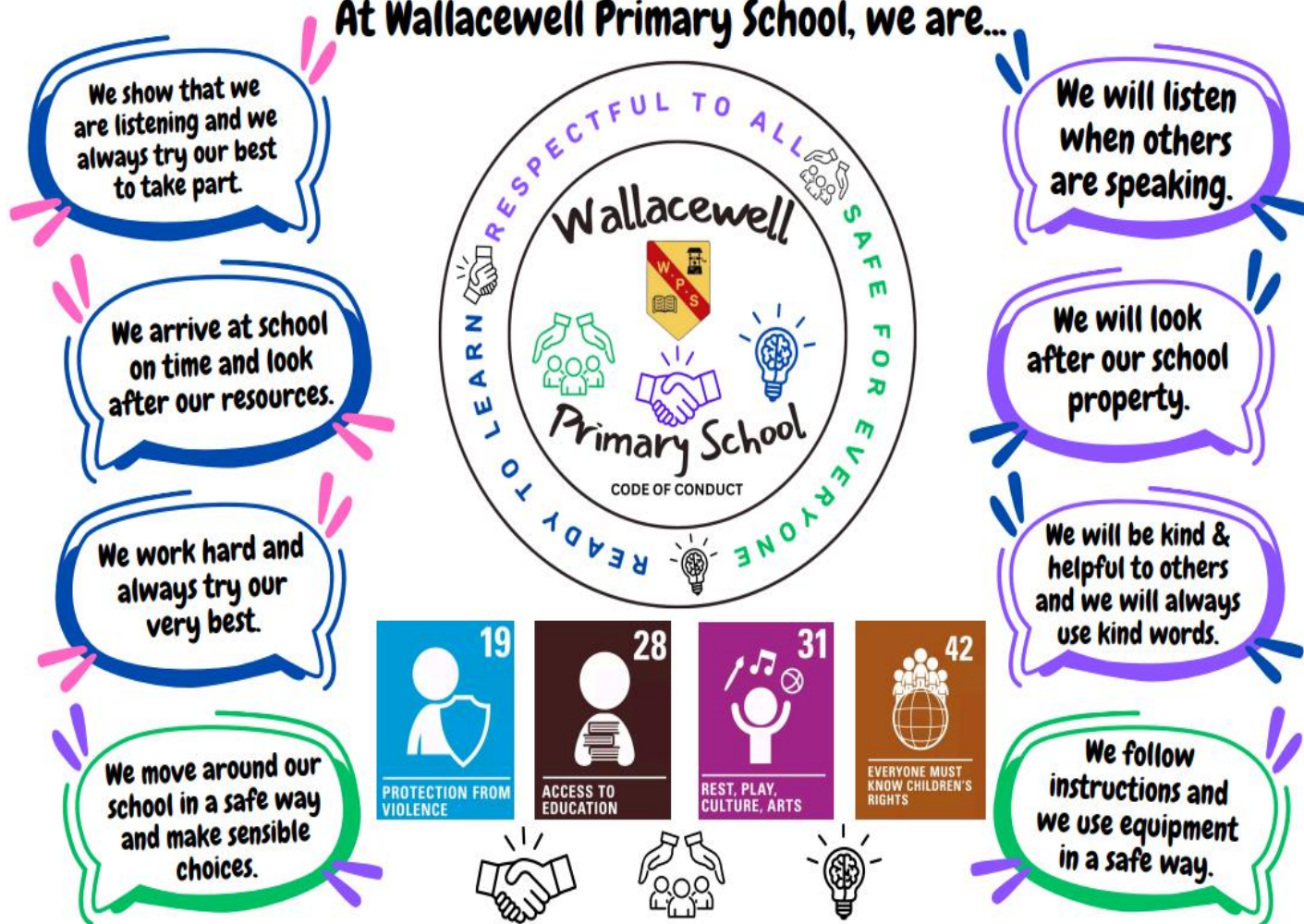
Relationships, Sexual Health and Parenthood - <https://rshp.scot/>

*Wallacewell Primary operates a cashless system for school meals and extra curricular activities/events.
Please ensure you download Parent Pay to order and, where applicable, pay your child's school meals.
Parent Pay is also used to pay for extra curricular events such as discos and other educational experiences.*

*Our Whole School Charter is used across the school and has been co-created and agreed by pupils and staff.
We encourage families to reinforce our Charter and Code of Conduct (Ready, Respectful, Safe) at home.*

WHOLE SCHOOL CHARTER

At Wallacewell Primary School, we are...



Our School Values:



Further information about our vision, values and aims can be found here - <https://blogs.glowscotland.org.uk/gc/wallacewellprimary/our-school-2/>