

Follow us on:



Twitter

@WallacewellPS



January 2024



Newsletter

Welcome to Term 3! We hope everyone enjoyed the festive break, even if it already seems a distant memory. As always, we have a busy term planned. Look out for class newsletters being uploaded at the end of January. These give a useful overview of the learning taking place across the school. NB: No paper copies will be issued. We have been trialling a slightly different format in an effort to ensure clarity and consistency in all classes.

Following our consultation with pupils, parents/carers and teaching staff we have refreshed our home learning policy moving in to term 3. This will ensure consistency across the school and will ensure we are meeting the needs of all of our pupils and families. Just under half of our families felt that home learning was important, with over a fifth of families sharing they felt it was not important. A very high number of families also share that they found home learning stressful, frustrating, a struggle and demanding. Almost all families felt that reading was important and this is why we have referenced the importance of reading for pleasure in our new policy. We have also introduced a termly extended family learning activity. A copy of our home learning policy can be found on our website and can also be viewed by scanning the QR code below.



As always, if you have any questions or concerns, or there's something I can help with, please do not hesitate to contact me. Wishing everyone all the very best for 2024!

Yours

Miss L Davidson (Head Teacher)

**Contact Details:**

0141 557 5041

Headteacher@wallacewell-pri.glasgow.sch.uk

Child Protection Co-ordinator:

Miss Davidson (HT)

Deputy Child Protection Co-ordinators:

Mrs Taylor (DHT) or Miss Kelly (DHT)

Parent Council 2023-24

Parent council meetings for the remainder of 2023-24. Meetings are held in the school & start at 6pm. All welcome. Childcare is available.

Monday 15th Jan Monday 19th Feb

Monday 18th March Monday 29th April

Monday 27th May Monday 17th Jun

Parent Council Contact Email: wallacewellparentcouncil@glow.sch.uk

Website Link: <https://blogs.glowscotland.org.uk/gc/wallacewellprimary/>



Physical Education Reminder

A gentle reminder to all families to remember to bring gym kits to school. Gym kits are required for health and safety reasons. Physical education is entitlement of all children and as such teachers at Wallacewell Primary plan for 2 hours of quality PE each week.

As per Glasgow City Council policy, no jewellery is allowed to be worn during PE lessons, such as gym sessions, dance workshops and swimming lessons. This includes, but is not limited to:

- bracelets
- necklaces
- earrings
- nose-piercings



All jewellery needs to be removed before taking part in taught physical activities. This rule applies to boys and girls. We recommend that families take children to get ears etc pierced during the Summer break to allow ample healing time, 6 weeks, so that earrings can then be removed for PE. Glasgow's full Health and Safety document for physical activity can be viewed by scanning the QR code.

Road Safety Reminder

At Wallacewell Primary we work hard to keep pupils safe, whilst teaching them how to keep themselves and others safe. Road safety is a very big part of our health and wellbeing curriculum. We are situated next to a very busy road and many children walk to and from school. We also, as you will be aware, have ongoing issues with the road leading into the school and the carpark. Irresponsible driving and parking has resulted in many near misses in recent years impacting on both children and adults. As such we would like to kindly request that when entering the school grounds by foot, families use the pedestrian crossings and only use the pavements. For the safety of all, we ask that families do not walk in the road or carpark area. Whilst we appreciate that this may result in a slightly longer route to the playground for families, it will ensure that everyone is safe and that children remember to always use pedestrian crossings and pavements not just when in the school grounds. We do not have the staff capacity to remind families from the road side each day. Thank you in advance for your cooperation and support on this matter.

Attendance & Engagement

Wallacewell Primary are passionate about getting it right for the pupils we work with. In order for us to meet learners needs we require pupils to be in school on time each day. The national average is 95% - 97% attendance, which equates to about 8 full days off a year. In Glasgow when a child's attendance falls below 95%, this becomes a concern for the school. Attendance below 85%, is particularly worrying.

We will follow the council and school procedures for managing attendance to support our families to ensure children attend school, on time, each day. Last month we will be starting to issue families with letters, as per the council policy, if pupils attendance has become a cause for concern. In January we will review attendance again and will send out further correspondence where attendance continues to be a concern.

Further information on current attendance levels and how to report absence has been attached to this newsletter. We would like to encourage all families to report absence using the pupil absence line—0141 287 0039.

December 2023



Whole School

Average attendance

83.31%

(- 12.23% from November)

Lowest stage
attendance rates

P5 – 86.79%

P4 – 87.36%

P7 – 87.42%

Attendance = Attainment = Wellbeing

Personal Detail Updates

Please ensure you contact the school office to update your details if anything has changed over the festive period including a change in telephone number, a change in additional contacts or a change of address.



Passports

We are often asked to counter-sign passport applications. We are happy to do this for you, as long as one of your children has been at Wallacewell for at least two years. The easiest way to apply for a passport is online. More information can be found at:

<https://www.gov.uk/browse/abroad/passports>





DIVERSITY Day

JOIN SMITHYCROFT LEARNING
COMMUNITY AS WE CELEBRATE
DIVERSITY ON
FRIDAY 23RD FEBRUARY 2024.



Dress as you please.

EQUALITY

INCLUSIVITY



Reporting Absence

How to report your child absent from school:

You should call the Pupil Absence Reporting (PAR) Team on: 0141 287 0039 to report your child absent from school. You can call the line every school day from 8:00am. You should call the absence reporting line before 9.30am on the first day of your child's absence.

Please do not use Groupcall to report your child's absence as this may not be seen by school staff and is not GCC protocol for reporting absence.

The Pupil Absence Reporting (PAR) team:

The Pupil Absence Reporting (PAR) service is provided by a dedicated team of experienced Education support staff. The information you provide to the team is updated in the school's system when you call, so the school is immediately aware of all absence information.

The Pupil Absence Reporting (PAR) service has been created to provide an efficient flexible way for parents/carers to report absence. We recognise that in some circumstances, for example, to report or discuss a sensitive issue, you may still require to speak directly with the school. The following guidance should be applied:

Please phone the PAR team to report the following absences:

Sickness absence: if the absence lasts more than one day, parents and carers are required to call on subsequent days to provide an update. A letter should be provided to the school when the child returns from their absence.

Medical or dental appointments: Parents and carers should call the team to report absences for medical or dental appointments. The school requires a letter or appointment card as evidence of the appointment to ensure permission is given to be absent from class.

Please phone the school directly to report the following absences:

To make sure you receive the right support you require, parents and carers should still contact the school directly to report absences of a sensitive or personal nature, for example:

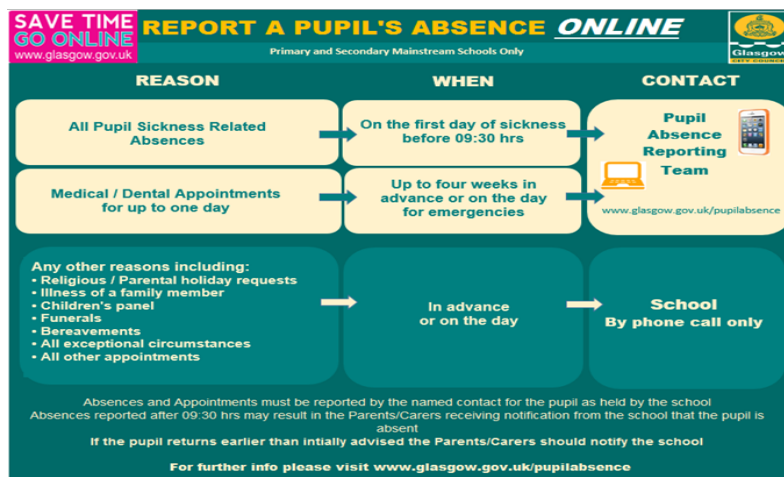
Bereavement

Serious illness, for example, an absence which is going to last more than one week

Injury, for example, broken limb

Contagious diseases or illness

You can also report your child's absence by using an online form, though you need to register with myaccount to do so. More information can be found here: <https://www.glasgow.gov.uk/pupilabsence>



Dates for the Diary 2023-24

January 2024

- 17.01.24 P7 Transition Visit to Smithycroft. *Info has been shared with families separately.*
- 19.01.24 ASN Blether Café
- 22.01.24 Scots Language Week in School
- 24.01.24 Primary 4 Science Centre Trip. *Info has been shared with families separately.*
- 25.01.24 Primary 7 Burns Supper—Learning Showcase. *Info has been shared with families separately.*
Primary 5 Science Centre Trip. *Info has been shared with families separately.*
- 31.01.24 Primary 1 & Primary 7 Dental Inspections—Day 1. *Info was sent to families before Christmas.*
Rag Bag Collection— Please ensure any donations are placed in the collection bin in the school car park. *All donations should be put in bags before placing in the collection bin.*

February 2024

- 01.02.24 Primary 1 & Primary 7 Dental Inspections—Day 2. *Info was sent out before Christmas.*
- 08.02.24 P1-3 Zoolab Science Visit (In School)
- 12.02.24 Holiday
- 13.02.24 Holiday
- 14.02.24 In-Service Day. School closed to pupils.
- 16.02.24 Maths Family Open Afternoon (2-2.45pm)
- 23.02.24 Learning Community Celebrating Diversity Day—**DRESS AS YOU PLEASE**
ASN Blether Café
- 28.02.24 Child Smile Fluoride Varnishing—Day 1. *Further info will be shared with families.*
- 29.02.24 Child Smile Fluoride Varnishing—Day 2. *Further info will be shared with families*

March 2024

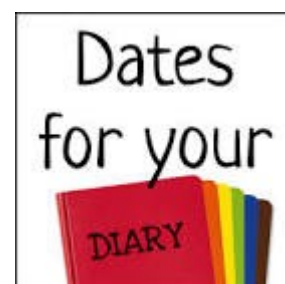
- 05.03.24 Parents Evening (Early) and Book Fair. *Appointments will be shared in due course.*
Pupils Forum trip to City Chambers. *Info will be shared with families.*
- 07.03.24 World Book Day. *Event details to follow.*
- 08.03.24 Primary 3 Easter—Learning Showcase. *Info will be shared with families separately.*
- 12.03.24 EAL Parents Day 1. *Appointments will be shared in due course.*
- 13.03.24 EAL Parents Day 2. *Appointments will be shared in due course.*
- 14.03.24 Parents Evening (Late) and Book Fair. *Appointments will be shared in due course.*
- 22.03.24 Primary 6 Education—Learning Showcase. *Info will be shared with families separately.*
ASN Blether Café
- 28.03.24 School closes at 2.30pm.
- EASTER HOLIDAY—Friday 29th March 2024—Friday 12th April 2024.

April 2024

- 15.04.24 Return to school
Learning for Sustainability Week (In School)
- 18.04.24 Community Clean Up Day. *More info to follow in future newsletters.*
- 22.04.24 Worlds of Work/DYW Week (In School). *More info to follow in future newsletters.*
- 25.04.24 Developing the Young Workforce Careers Fair (In School) *More info to follow in future newsletters.*
- 26.04.24 Primary 5 Diversity—Learning Showcase. *Info will be shared with families separately.*

May 2024

- BLAIR DRUMMOND SUMMER TRIP—DATES/TIMES TBC
- PRIMARY 7 INDUCTION DAY (SMITHYCROFT) - DATES/TIMES TBC
- 10.05.24 P4 Children's Rights Learning Showcase. *Info will be shared with families separately.*
- 22.05.24 New Entrant Induction Day 1 (AM)
- 24.05.24 HOLIDAY
- 27.05.24 HOLIDAY
- 28.05.24 Rookie Rockstars (In School – Tue - Thur)
- 31.05.24 ASN Blether Café



Dates for the Diary 2023-24

June 2024

- 05.06.24 New Entrant Induction Day 2 (PM)
- 06.06.24 Rookie Rockstar Concerts. *More info to follow in future newsletters.*
- 07.06.24 Sports Day. *More info to follow in future newsletters.*
- 10.06.24 Primary 7 Residential Week. *Info has been shared with families.*
- 13.06.24 P1-6 Summer Beach Disco. *More info to follow in future newsletters.*
- 20.06.24 Primary 7 Leavers Assembly (AM). *Info will be shared with families in due course.*
Primary 7 Leavers Dance (6-8pm). *Info will be shared with families in due course.*
- 26.06.24 School closes at 1pm

School Term Dates

January

- Schools return on Monday, 8 January 2024

February mid term break

- Monday, 12 February 2024
- Tuesday, 13 February 2024
- Wednesday, 14 February 2024 (In-service day)

April - Spring Holiday (Easter)

- Schools close at 2.30 pm on Thursday, 28 March 2024
- Good Friday 29 March 2024
- Easter Monday 1 April 2024
- Monday, 1 April - Friday, 12 April 2024 (Spring Break)
- Schools return on Monday, 15 April 2024

May

- Thursday, 2 May 2024 (In-service day to coincide with UK Parliamentary elections, but may be subject to change)
- Monday, 6 May 2024 (May Holiday)
- Friday, 24 May 2024 and Monday, 27 May 2024 (May Weekend)

June

- Schools Close at 1.00 pm on Wednesday 26 June 2024

August - Monday 12 August 2024 (Teachers return - amended)

School Term Dates 2024-2025



August

- Monday, 12 August 2024 (Return date for Teachers & In-Service Day)
- Tuesday, 13 August 2024 (In-Service Day)
- Wednesday, 14 August 2024 (Return date for Pupils)

