

Toryglen Primary School & LCR



Primary 1
Induction Booklet
2026-2027

WELCOME TO YOUR NEW SCHOOL!

Toryglen Primary School & LCR

6 Drumreoch Place

Toryglen

Glasgow

G42 0ER

Tel: 0141 647 4396

headteacher@toryglen-pri.glasgow.sch.uk

Inclusion
Responsibility
Relationships
Respect
Nurture

Toryglen Primary School is a non-denominational school with a roll of approximately 125 pupils, across mainstream and LCR. We believe that we have a responsibility to provide our children with engaging learning opportunities in an environment where they feel safe, happy and nurtured. We believe that for effective learning and teaching to take place it is essential we build positive, caring relationships with our pupils, their families as well as building partnerships within our local community.

At Toryglen Primary School we refreshed our values in August 2021 with a Values Launch then held in December 2021. Our Values centre around the word "LEARN," with our motto being #togetherweLEARN- you may see this used on social media. To further support our positive ethos, we have a House System which relaunched in 2025. Children earn points for positive choices, effort and work. All children will be allocated a House Team in the first week of term.

We aim to provide a fun, secure learning environment to encourage each of our children to develop to their highest potential and to believe in themselves and others. We promote and celebrate positive behaviour and resilience. We enjoy working co-operatively with parents/carers to achieve success across every area of our curriculum and believe that a close partnership between home and school is essential. We hope you will enjoy getting to know us better and look forward to your child joining us at Toryglen Primary in August! 😊

SLT Team



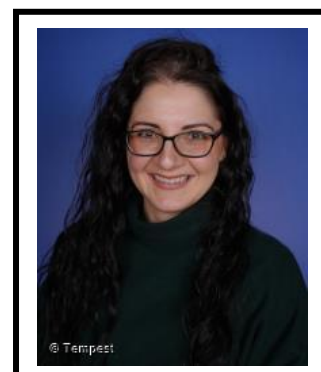
Mrs. S. Meehan - HT



Mr. P. Hardie - DHT



Mr. P. Fisher - PT



Mrs. C. Boyd -LCR PT

This guide will help you understand how the school operates and will give you some specific information about starting school.

If there are any questions that we have not answered, then please contact the school and we will be happy to help.



Key Dates and Hours

The start date for P1 pupils at Toryglen Primary School is Wednesday 12th August 2026.

Toryglen PS School Hours

9.00am- 10:30am: Morning Session 1

10:30-10:45am: Playtime

9:45-12:15pm: Morning Session 2

12.15pm- 1.00pm: Lunch

1.00pm - 3.00pm: Afternoon Session



School lunch is free for all P1-P6 pupils and promotes healthy eating options. If you would rather provide a packed lunch, please feel free to do so. If you wish any further details about the lunches available or any aspect of lunch provision including menus, please contact the school or look at Fuel Zone:



www.fuelzoneprimary.co.uk

<https://www.glasgow.gov.uk/article/6188/Fuel-Zone-School-Meals>

www.twitter.co.uk/fuelzoneGlasgow

Please be aware you can and should still fill in a Free School Meal application if you are entitled as this also determines provision of resources within our school for your child. The following link is where you will find application forms for Clothing grants as well.



<https://www.glasgow.gov.uk/article/9429/Clothing-Grant-Free-School-Meals-Application>

What Your Child Will Need to Bring to School

School Bag: Your child will need a school bag to carry reading books, Homework activities, PE kit etc.

P.E. Kit: On a PE day your child will need a T-shirt and shorts. We would recommend they keep this in school in a gym bag. You can then ask your child to bring the gym kit home for washing on a weekly basis.



N.B: children should not wear jewellery to school on PE days.

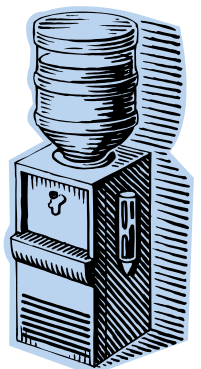
If you are intending to have your child's ears pierced the best time for this is during the beginning of the summer holidays so that children can heal and practice removing jewellery themselves.

Unfortunately, **school staff are not allowed** to remove pupil's earrings and therefore it is best if parents remove these items on specified days.

In line with Glasgow City Council policy, pupils cannot wear football strips/tops to gym. Also, pupils should not bring any other items to school which show football teams' logos e.g. lunch boxes, pencil cases. All slogans must be age appropriate as well.

It is essential that parents please remember to put labels with your child's name on all clothing, school bags, shoes, lunch boxes. This is a big job, but worth it and will prevent losing items.

Water Bottles: Water coolers are available throughout the school. Children are encouraged to bring water bottles with them as drinking water during the day is highly recommended and keeps children refreshed and best able to learn.



Our School Uniform

The children in our school always look their best in our school uniform. It gives the children a sense of identity and pride in Toryglen Primary school. Uniforms support Cost of the School Day as there is no pressure to have the latest branded clothing items and it also means that when we are out of school on trips and visits every child is easily identified, which helps us with the Health and Safety of all children. We do not allow non-uniform unless for a specified event or agreed with the Senior Leadership Team.

Our school uniform is made up of a blue polo shirt and blue sweater/cardigan. Please see pictures below.



Grey/black trousers, grey/black skirt, grey/black pinafore, white shirt and tie make up the rest of our school uniform.

School uniform is available to order from <https://www.schoolwearmadeeasy.com> and you can purchase school ties from our school office.

Please remember it does not just support your family to apply for entitlement of free school meals and clothing grants; it supports our Pupil Equity Fund (PEF) to acquire funding for a range of school resources.

<https://www.glasgow.gov.uk/article/9429/Clothing-Grant-Free-School-Meals-Application>

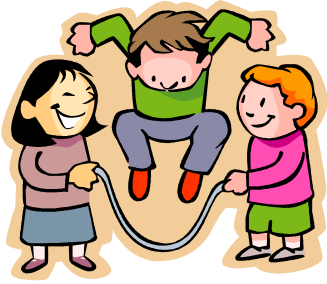
Primary 7 Buddies

As you may be aware the school runs a "buddy" system to allow our new pupils to settle into school life.

New Primary 1 pupils will meet their P7 buddies as part of the transition process.



When the children start P1 their P7 buddies will be on hand to help them get used to being at school and be a friendly face in the new school environment.



A small group of P7 Buddies support the P1 children in the playground at playtimes and help them in the dinner hall at lunchtimes as well.

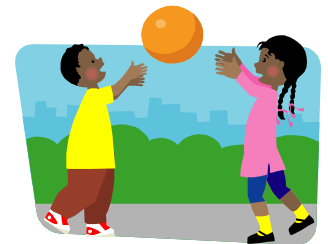
They will always seek the help of a supervising staff member and have training once a year for this important responsibility.

Breakfast Club

Breakfast Club starts at 8.00am and finishes at 8.45am. Children can choose from toast, cereal, milk and fruit juice at a daily charge of £2. Children who are entitled to a free meal will receive their breakfast free of charge. Children at Breakfast Club will be supervised inside until 8.45 then staff will initiate their move into the playground. From 8.50am a member of Support Staff/Senior Leadership Team will be in the playground. We would request if your child isn't at Breakfast Club that you do not drop them off before 8.50am.

Playtimes and Lunchtimes

The children play in the playground at break and after eating their lunch at lunchtime. The adults supervising are members of our Support Staff who ensure that all children are safe while playing. The Senior Leadership Team will also make visits to the playground areas during breaks and lunches.



As well as having the P7 Buddies to help them settle in, the P1 children will have access to playground games. These games encourage positive play and are well used by all the children.

During playtimes children have access to toilet facilities and are encouraged to go before the bell rings, these are monitored by our Support Staff to always ensure safety for all.

We do believe at Toryglen that there is "No such thing as bad weather just bad clothing..." So, if we can stay outside, we will. However, if, due to extreme weather conditions, children cannot go out to play they are supervised in their classrooms both by Wet Weather Helpers and Support Staff. Our



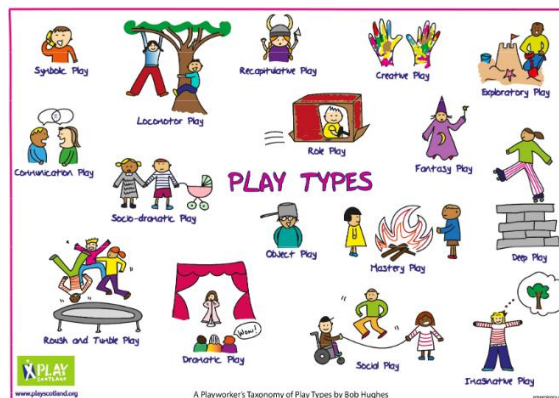
HT, DHT and PTs also supervise during wet weather. We would ask that children always come to school dressed for the possibility of rain with appropriate shoes/wellies and a waterproof jacket with a hood. **Umbrellas are not permitted in school for safety reasons as they can cause accidents.**

Some children may find playtime a little daunting at first. If your child is worried after the settling in period passes, please do let us know so that we can best meet their needs.

Play Based Approaches in Primary 1

Children in P1 are given two formal outdoor playtimes every day during break and during Lunchtime.

Within the classroom there are also many opportunities to engage in child led and teacher led or teacher-initiated play. This play-based approach has enabled us to focus in depth on learning within the 3 main core curricular areas (**English & Literacy**, **Health & Wellbeing**, **Maths and Numeracy**). The P1 classroom has different zones for play and these change throughout the year depending on the children's interests.



A play-based approach provides opportunities for spontaneous play and ensures the children can build creatively. Child-led play helps develop working collaboratively in groups, negotiating, sharing and resolving conflict. This approach also provides children with opportunities to make decisions; learn at their own pace; discover their own interests and engage fully in areas where they would like to advance and explore. The teacher's role in free play is to observe; they may interact in an encouraging way without giving direction and can intervene sensitively when necessary. Play encourages pupils to improve dialogue between one another and teaches them about the rights of the child to respect the space and play of others. It is vital that time should be taken at the end of each play session to reflect on the play as a class.

Play Time Snack



If you wish to give your child a snack at break, we would ask that it is kept to one small, healthy item - the children do not have long outside and often find that they do not have time to finish what has been given to them. We are a health promoting school and we actively encourage the children to bring healthy snacks to school. Fizzy drinks and chewing gum are actively discouraged at school for health reasons.

Nuts or products containing nuts are not permitted in school as we have some children with severe nut allergies.

PLEASE



**NO PEANUTS
OR
NUT PRODUCTS**

Communication

As a parent you may wish to pass on information directly to the class teacher or to sort out any minor concerns. Your child's class teacher will be happy to meet you via an appointment. Please telephone the school or pop into the school office to arrange to speak with the class teacher. Our Senior Leadership team will always support with this.



Absence and Illness

It is very important that the school is informed of any absence or illness as soon as possible. If your child is sick or is going to be absent from school for any reason, **please phone the absence line not the school: [0141-287-0039](tel:0141-287-0039)**.

The system which is currently operating means that if your child is not in school by 9.30am and we have not been informed by the absence line, the school office will contact you by text or by telephone to confirm why your child is absent.

What if my child becomes ill or has an accident?

Accidents

In the first instance your child will be attended to by our support staff in the Medical Room and our qualified First Aiders. If your child has a bump on the head, you will be informed by a telephone call /letter.

Sickness/illness

If your child is sick or becomes unwell during school, parent/carers are contacted to decide the best course of action. For this reason, it is vitally important that your emergency contact information is kept up to date and accurate.

In the case of serious accident or illness it may be necessary to take your child straight to the hospital. Parent/Carers would always be contacted straight away to advise them of this.

School Policies and Procedures

School policies and procedures can be found in the following ways:

- Our School Handbook
- Glasgow City Council Website

Further information can be obtained at any time by contacting the school directly.