

**ST THOMAS AQUINAS SECONDARY
SCHOOL**

S2 INTO S3

PERSONALISATION AND CHOICE OPTIONS INFORMATION BOOKLET



Table of Contents

1. Accessibility Options
2. Introduction
3. SCQF Levels
4. Useful external links
5. Completion of final options form
6. Curriculum Structure
7. Future Job Prospects in Glasgow
8. Department Information



Accessibility options

If you would like this document read aloud or in another language please head over to your year group TEAMS page, open the document and follow these steps:

1. Click “view” at the top of the page
2. Then click “Reading View”
3. Then click “Immersive reader”
4. Press the play button for it to read the text aloud
5. Press the dictionary icon on the top right if you want to change the language
6. Press the “AA” symbol on the top right if you want to change the font size, style and page colour



Introduction

This booklet provides an overview of the option choices available before making your final choices. In addition to this booklet other supports will be made available to you during the decision making including:

- S2 Curricular Parent Information Evening
- Discussions around curricular pathways through PSE
- A one-to-one meeting with our SDS advisors
- A meeting with your Pastoral Teacher to discuss your proposed option choices
- Information sharing through Year Group assemblies
- A list of useful websites to allow young people and adults to read about National Qualifications, course outlines and assessment structures.



CURRICULUM STRUCTURE

Pupils follow a Broad General Education from S1 to S3, including well planned experiences and outcomes across all the curriculum areas from early years through to S3. This also includes understanding the world, Scotland's place in it and the environment, referred to as Learning for Sustainability.

Pupils make their first options choices in S2, where they narrow down their subjects and continue to experience a Broad General Education into S3. Pupils must choose Maths and English, and 7 additional subjects from curricular areas. They will also continue to study Personal & Social Education (PSE), Core Physical Education (PE) and Core Religious Education (RE).

Pupils enter the Senior Phase in S4, where they begin to work towards qualifications of their choice. Towards the end of S3, pupils must choose 5 of their current subjects to carry forward into S4. Pupils must also study Maths, English (or English for Speakers of other Languages), PSE, Core PE and Core RE in S4.

Towards the end of S4, pupils choose 5 of their strongest subjects to carry through to S5, where they will also study PSE and Core PE.

Pupils may also choose to study 4 subjects alongside a Vocational College Course or Foundation Apprenticeship in S5.

Pupils who continue into S6 will choose 5 subjects to study. These may include more difficult SCQF levels of the same subject, for example Advanced Highers, or 'crash' Highers of new subjects that they have not studied before. Pupils may also gain other accreditation through qualifications such as NPAs.



Qualification Structure

The Scottish Credit and Qualifications Framework has 12 levels. The different levels indicate the level of difficulty of a particular qualification. The table below allows broad comparisons to be made between qualifications and learning, and allow learners to understand the range of skills and learning that should be achieved at each level.

The web link below will provide more information.

<https://scqf.org.uk/support/learners/school-leavers/parents-and-carers-of-learners/>

SCQF Levels	SQA Qualifications		Qualifications of Higher Education Institutions	Apprenticeships & SVQs
12			Doctoral Degree	Professional Apprenticeship
11			Masters Degree, Integrated Masters Degree, Post Graduate Diploma, Post Graduate Certificate	Graduate Apprenticeship Professional Apprenticeship SVQ
10			Honours Degree, Graduate Diploma, Graduate Certificate	Graduate Apprenticeship Professional Apprenticeship
9		Professional Development Award	Bachelors / Ordinary Degree, Graduate Diploma, Graduate Certificate	Graduate Apprenticeship Technical Apprenticeship
8	Higher National Diploma		Diploma Of Higher Education	Higher Apprenticeship Technical Apprenticeship SVQ
7	Advanced Higher, Awards, Scottish Baccalaureate	Higher National Certificate	Certificate Of Higher Education	Modern Apprenticeship SVQ
6	Higher, Awards, Skills for Work Higher			Modern Apprenticeship Foundation Apprenticeship SVQ
5	National 5, Awards, Skills for Work National 5			Modern Apprenticeship SVQ
4	National 4, Awards, Skills for Work National 4	National Certificate	National Progression Award	SVQ
3	National 3, Awards, Skills for Work National 3			
2	National 2, Awards			
1	National 1, Awards			



HELP AND SUPPORT

In school	Online
Class teachers	www.skillsdevelopmentscotland.co.uk
Head of department	www.myworldofwork.co.uk
Pastoral Care Teachers	www.planitplus.net
Year Head - Mrs Morrison	www.prospects.ac.uk
Careers Advisers	www.scqf.org.uk



OPTIONS FORM

CORE 1		CORE 2		CORE 3	
■ ENGLISH		■ MATHEMATICS		■ SPANISH	
CHOICE 1 ■ GEOGRAPHY ■ HISTORY ■ MODERN STUDIES	If pupils choose an option from column 2A, they must then choose from 3A. If they choose from column 2B, they must choose from 3B.				CHOICE 4 ■ ART & DESIGN ■ BUSINESS MANAGEMENT ■ DRAMA ■ FRENCH ■ MUSIC
	CHOICE 2A ■ BIOLOGY ■ SCIENCE	CHOICE 3A ■ ADMINISTRATION & IT ■ CREATIVE THINKING ■ HEALTH & FOOD TECHNOLOGY ■ PRACTICAL WOODWORK*	CHOICE 5 ■ ART & DESIGN ■ CHEMISTRY ■ DESIGN & MANUFACTURE ■ FASHION & TEXTILES ■ HISTORY ■ MODERN STUDIES ■ MUSIC		
	CHOICE 2B ■ COMPUTING ■ GRAPHIC COMMUNICATION ■ BUSINESS MANAGEMENT	CHOICE 3B ■ CHEMISTRY ■ PHYSICS			
OTHER COMPULSORY SUBJECTS: RE PE PSE HWB					



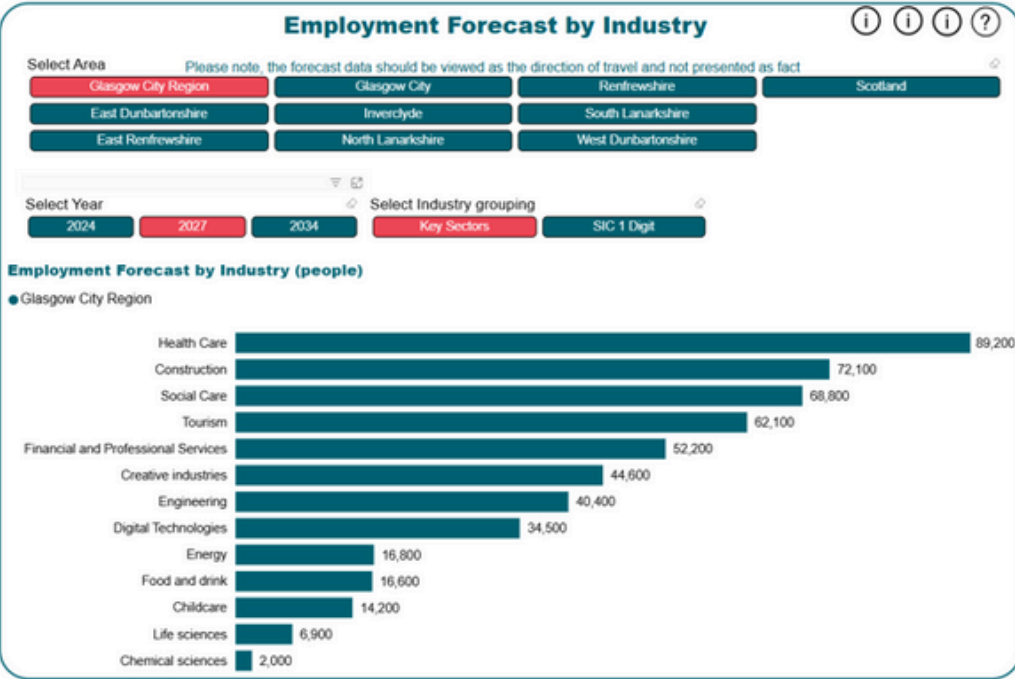
OPTIONS FORM – The Process

- 1.S2 Options Information Evening
- 2.SDS (Careers Adviser) One to One interviews
- 3.Personalisation and Choice
Assembly and Information Session
- 4.Research – at home with
parent/carer
- 5.Read S2 into S3 Options Booklet
- 6.Video link from L Morrison
- 7.MS Form – Completed by Mid-
February
- 8.One to One Pastoral Care Interview
to confirm option choices



FUTURE JOB PROSPECTS IN GLASGOW

Below is an insight into the projected job forecast by Industry. This can help you see the most likely area to secure employment in the future in the Glasgow area.



Optional Subjects

Admin & IT

Art

Biology

Business
Management

Chemistry

Computing
Science

Creative
Thinking

Design &
Manufacture

Drama

Fashion & Textile
Technology

French

Geography

Graphic
Communication

Health & Food
Technology

History

Modern
Studies

Music

Physics

Practical
Cookery

Practical
Woodwork

Science

Core Subjects

English

HWB

Maths

PE

RE

Spanish



ADMINISTRATION & IT

(Dept. BECS)

What will you study?

- The role of Administration in the workplace
- Excel (Spreadsheets)
- Access (Databases)
- Publisher
- PowerPoint
- Data Security
- Health and Safety
- Technology in the workplace



What pathways can I follow after S3?

S4

- National 3/4/5 Administration & IT

S5/6

- Higher Administration & IT
- Level 6 Events Management
- Level 5 Marketing with Level 6 START (two qualifications)
- Level 5/6 Business and IT



Back to choices



ART

(Dept. Art & Design)

What will you study?

- Design & Expressive Work: Create art/design pieces using varied materials and technology; build life skills; take part in workshops and visits.
 - Design: Jewellery / Body Adornment, Product, Fashion, Textiles, Graphics
 - Expressive: Still Life, Portraiture - Human / Animal, Landscape, Fantasy, Built Environment
- Craft: Printmaking, 3D Sculpture
- Historical & Critical Work: Study artists/designers and how they work.
- Written: Looking at Artists/Designers work and practice.



What pathways can I follow after S3?

S4

- National 3/4/5 Art & Design

S5/6

- Higher Art & Design
- Advanced Higher Art & Design
- Level 5 NPA: Art & Design
- Skills for Work: National 5 Creative Industries
- Level 5/6 Creative Thinking



Back to choices

BIOLOGY

(Dept. Science)

What will you study?

- Learn about different living things and where they live (biodiversity).
- Discover how energy moves through ecosystems.
- Try sampling and measuring living things in nature.
- Understand how animals and plants adapt to survive.
- Study natural selection and evolution (how species change over time).
- Explore how humans affect the environment.
- Learn about cells — their structure and how they work.
- Find out how materials move in and out of cells.
- Study cell division, DNA, and how proteins are made.



What pathways can I follow after S3?

S4

- N4/5 Biology or N3/4 Science

S5/6

- Higher Human Biology
- Advanced Higher Biology
- N5 Lab Science
- N5 Health Sector



Back to choices

BUSINESS MANAGEMENT

(Dept. BECS)

What will you study?

- The economy
- How businesses operate
- Different types of businesses and the sectors they operate in
- Marketing
- How products are made
- Financial documents
- Staff motivation
- Advertising
- Social media



What pathways can I follow after S3?

S4

- National 3/4/5 Business Management

S5/6

- Higher Business Management
- Level 6 Events Management
- Level 5 Marketing with Level 6 START (two qualifications)
- Level 5/6 Business and IT



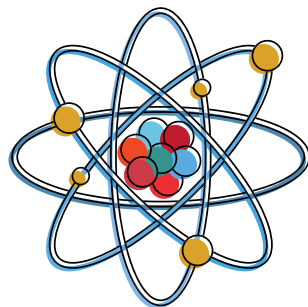
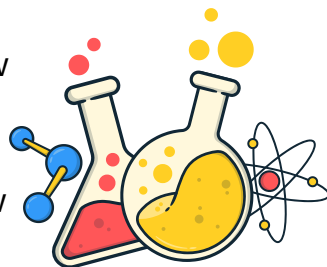
Back to choices

CHEMISTRY

(Dept. Science)

What will you study?

- Learn about chemical reactions and how fast they happen (reaction rates).
- Study atoms, the periodic table, and how substances bond and form compounds.
- Practise writing chemical formulas and balanced equations.
- Do chemical calculations to find out how much of each substance is used or made.
- Develop skills in researching, planning, and doing experiments.
- Learn how to make a fair test, analyse data, and write lab reports.
- Practise remembering and using knowledge in new situations.
- Build problem-solving and analytical thinking skills.



What pathways can I follow after S3?

S4

- N4/5 Chemistry or N3/4 Science

S5/6

- Higher Chemistry
- Advanced Higher Chemistry
- N5 Lab Science
- N5 Health Sector



Back to choices



COMPUTING SCIENCE

(Dept. BECS)

What will you study?

- Web development
- Python
- Cyber Security
- Computer Systems
- Computational Thinking
- Games Development



What pathways can I follow after S3?

S4

- National 3/4/5 Computing Science
- Level 4/5 NPA Digital Media and Level 5 NPA Web Design (two qualifications)



S5/6

- N5/Higher Computing Science
- Level 6 Cyber Security



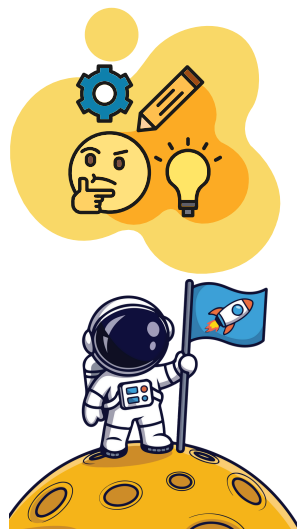
Back to choices

CREATIVE THINKING

(Dept. Design & Technology)

What will you study?

- Cover a range of knowledge and skills to allow pupils to think creatively about the world and solving problems:
- Marseum – pupils are tasked with creating the first museum on the planet Mars. Pupils will choose an aspect of life on Earth that they want to showcase and build an exhibition which explains their chosen subject and shares the impact it has on life on Earth.
- Threads – Learners will create a generation sneaker that captures their identity, culture and values. Pupils are expected to research, sketch and create prototypes to bring their designs to life.
- These standalone interdisciplinary units are designed to spark curiosity, creativity, and collaboration, preparing students for future learning



What pathways can I follow after S3?

S4

- Level 5 Creative Thinking

S5/6

- Level 6 Creative Thinking



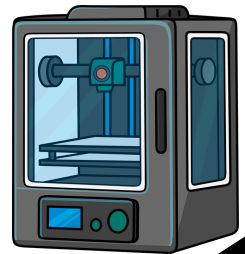
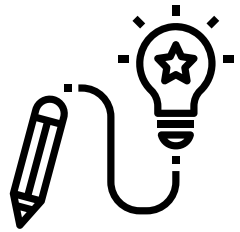
Back to choices

DESIGN & MANUFACTURE

(Dept. Design & Technology)

What will you study?

- Design folio – Using your creative and critical thinking skill to follow the design process from research to idea generation to development of ideas and then onto refining ideas for manufacture.
- Wood knowledge – Using your practical skills to produce models and projects out of wood as well as learning about the properties of wood, their uses and the tools and machines used in manufacturing wooden products.
- Metal knowledge – Using your practical skills to produce a project out of metal as well as learning about the properties of metals, their uses and the tools and machines used in manufacturing metal products.
- Plastic knowledge – Learning about the properties of plastics, their uses and the tools and machines used in manufacturing plastic products.



What pathways can I follow after S3?

S4

- National 4/5 Design & Manufacture

S5/6

- N5/Higher Design & Manufacture
- Level 5/6 Creative Thinking



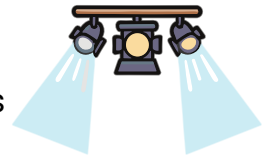
Back to choices

DRAMA

(Dept. Performing Arts)

What will you study?

- Learn more about different drama styles and theatre concepts.
- Work together with others to create performances.
- Get chances to perform for your classmates and other groups.
- Learn to give helpful feedback on your own work and others'.
- Take part in school drama groups and public performances.
- Keep developing your character acting skills.
- Understand how Drama contributes to culture.
- Explore how theatre arts and technology (ICT) are used in Drama.
- Create your own plays and performances.
- Learn more theatre words and processes.
- Build confidence to perform in front of different audiences.



What pathways can I follow after S3?

S4

- N4/5 Drama

S5/6

- Higher Drama



Back to choices



FASHION & TEXTILE TECHNOLOGY

(Dept. Home Economics)

What will you study?

- Fashion & Textile choices
- Fashion & Textile item development
- Fashion designers

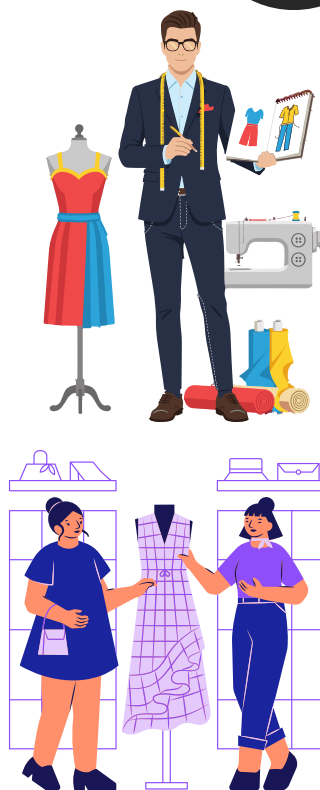
What pathways can I follow after S3?

S4

- National 3/4/5 Fashion & Textile Technology

S5/6

- Higher Fashion & Textile Technology
- Higher Health and Food Technology
- N5 Early Learning and Childcare Development



Back to choices

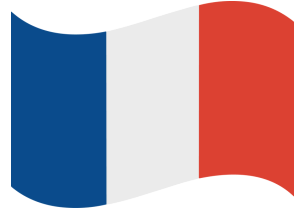


FRENCH

(Dept: Modern Languages)

What will you study?

- Developing your French vocabulary in relation to:
 - health
 - your local area
 - employability



What pathways can I follow after S3?

S4

- National 3/4/5 French

S5/6

- N5/Higher French
- N5/Higher Spanish
- Higher Italian (S6)
- Level 4/5 NPA Languages Passport

Bonjour



Back to choices

GEOGRAPHY

(Dept. Social Subjects)

What will you study?

- Population: where people live and why; levels of development worldwide
- Climate Change: causes, impacts and strategies to reduce climate change
- Glaciation: how the ice age shaped Scotland and a study of Loch Lomond national park (including field visit to Loch Lomond)



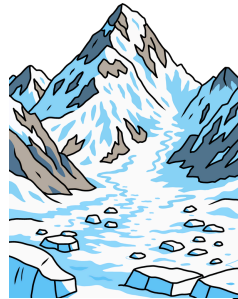
What pathways can I follow after S3?

S4

- National 3/4/5 Geography

S5/6

- Higher Geography (and following successful completion you can then study other Higher Social Subjects: History, Modern Studies, Politics)
- Level 5 NPA Scottish Studies
- Level 5 NPA Criminology



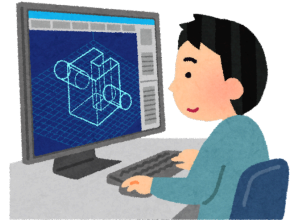
Back to choices

GRAPHIC COMMUNICATION

(Dept. Design & Technology)

What will you study?

- Promotional Design – developing our creativity by producing effective, high quality posters, logos, graphs and advertisements.
- Preliminary Sketching – developing our problem solving skills to produce a range of 2D and 3D drawings.
- 3D CAD Modelling – developing our critical thinking skills to produce accurate 3D CAD models using specialist computer software. We also use these models to produce production drawings to develop our understanding of CAD.



What pathways can I follow after S3?

S4

- National 4/5 Graphic Communication
- Level 5 NPA Creative Thinking

S5/6

- N5/Higher Graphic Communication
- Level 5/6 Creative Thinking



Back to choices

HEALTH & FOOD TECHNOLOGY

(Dept. Home Economics)

What will you study?

- Contemporary Food Issues
- Food Product Development
- Food for Health

What pathways can I follow after S3?

S4

- National 3/4/5 Health & Food Technology

S5/6

- Higher Health & Food Technology
- Higher Fashion & Textile Technology
- Level 6 NPA Hospitality
- N5 Early Learning and Childcare Development



Back to choices

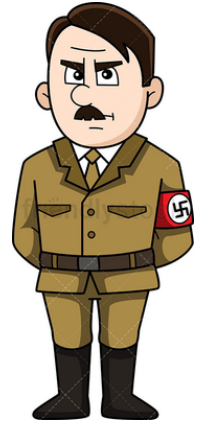


HISTORY

(Dept. Social Subjects)

What will you study?

- Nazi Germany: Hitler's rise to power and what life was like in Nazi Germany
- Trade in Enslaved African People: Britain's involvement in the Atlantic slave trade and its legacy



What pathways can I follow after S3?

S4

- National 3/4/5 History

S5/6

- Higher History (and following successful completion you can then study other Higher Social Subjects: Geography, Modern Studies, Politics)
- Level 5 NPA Scottish Studies
- Level 5 NPA Criminology



Back to choices



MODERN STUDIES

(Dept. Social Subjects)

What will you study?

- Nature, causes and consequences of crime
- Criminal justice system
- Responses to crime (police and prisons)



What pathways can I follow after S3?

S4

- National 3/4/5 Modern Studies



S5/6

- Higher Modern Studies (and following successful completion you can then study other Higher Social Subjects: Geography, History, Politics)
- Level 5 NPA Scottish Studies
- Level 5 NPA Criminology



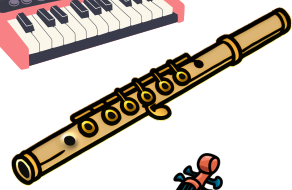
Back to choices

MUSIC

(Dept. Performing Arts)

What will you study?

- Different musical styles and concepts.
- Choose two instruments to focus on and improve your playing skills.
- Get chances to perform for classmates and other groups.
- Some students may get instrumental lessons to help them progress further.
- Take part in music groups and school or public performances.
- Focus on developing and applying practical music skills.
- Grow confidence performing in front of others.
- Learn about different instruments and music technologies used today.
- Discover how music contributes to culture and society.
- Learn to read basic music notation.
- Compose and share your own music using new ideas and techniques.



What pathways can I follow after S3?

S4

- N4/5 Music

S5/6

- N5 Music Technology
- Higher Music
- Advanced Higher Music



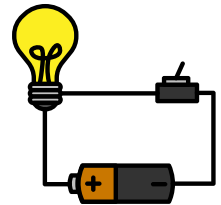
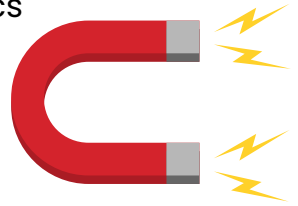
Back to choices

PHYSICS

(Dept. Science)

What will you study?

- Learn about forces and motion (Dynamics and Forces).
- Explore space, satellites, and space exploration.
- Study electricity, energy, and how they're used.
- Discover waves, sound, and radiation.
- Develop scientific skills like:
 - Researching, planning, and doing experiments.
 - Designing fair tests and analysing data.
 - Drawing conclusions and writing lab reports.
 - Practise remembering and applying knowledge in new situations.
- Build problem-solving and analytical thinking skills.
- Complete a mini-assignment to get ready for the S4 Physics assignment.



What pathways can I follow after S3?

S4

- N4/5 Physics or N3/4 Science

S5/6

- Higher Physics
- Advanced Higher Physics
- N5 Lab Science
- N5 Health Sector



Back to choices

PRACTICAL COOKERY

(Dept. Home Economics)

What will you study?

- Understanding & Using Ingredients
- Organisational Skills in Cookery
- Cookery Skills
- Techniques & Processes

What pathways can I follow after S3?

S4

- National 3/4/5 Practical Cookery

S5/6

- N5 Practical Cookery
- Level 6 NPA Hospitality
- N5 Early Learning and Childcare Development



Back to choices

PRACTICAL WOODWORK

(Dept. Design & Technology)

What will you study?

- Cover a range of knowledge and skills related to woodworking including:
- Practical - Using your practical skills to produce models and projects out of wood. Learning to use tools and machines accurately while considering health and safety.
- Theory - Learning about the properties of wood, their uses as well as learning about the tools and machines used in manufacturing wooden products. Pupils will also learn about aspects of sustainability.
- Practical Woodwork is a useful subject because it teaches you real-world skills, encourages perseverance and precision.



What pathways can I follow after S3?

S4

- National 4/5 Practical Woodwork

S5/6

- N4/5 Practical Woodwork



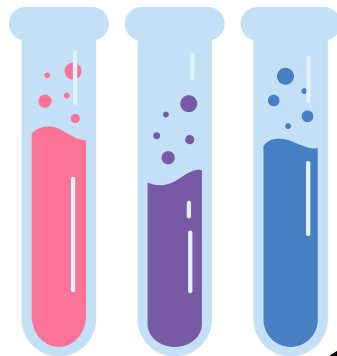
Back to choices

SCIENCE

(Dept. Science)

What will you study?

- Learn about modern science topics like renewable energy, telecommunications, and sustainable resources.
- Explore how these topics affect people and the environment.
- Skills:
- Practise researching, experimenting, and analysing data.
- Learn to design fair tests and write lab reports.
- Build knowledge, problem-solving, literacy, numeracy, and critical thinking skills.



What pathways can I follow after S3?

S4

- N3/4 Science

S5/6

- N5 Lab Science
- N5 Health Sector



Back to choices



S3 CORE SUBJECT

ENGLISH

(Dept. English)

What will you study?

- In S3, pupils will build on the skills in Reading, Writing, Listening and Talking that they have been working on throughout the BGE. They will do this through the study of a variety of different texts. Pupils will also study a thematic unit in Term Two, based around the theme of Society and Representation. In this unit, pupils will study a range of diverse non-fiction and fiction texts.



What pathways can I follow after S3?

S4

- N3/4/5 English
- N2/3/4/5 ESOL (for some pupils with English as an Additional Language)

S5/6

- Higher English
- Higher ESOL
- L5/6 Literature and Communication



Back to choices



S3 CORE SUBJECT

HEALTH & WELLBEING

(Dept. Physical Education)

What will you study?

- develop an understanding of wellbeing
- explore factors that influence wellbeing
- find and use sources of information to understand wellbeing
- present findings from an investigation
- identify choices and make decisions about improving wellbeing
- set targets and make a plan for an activity to improve wellbeing
- undertake an activity to improve wellbeing
- Opportunities for promoting confidence, independent thinking and positive attitudes, and aims to motivate learners to be successful and participate responsibly in the wider community.



What pathways can I follow after S3?

S5/6

- 'Health and Wellbeing' course: Level 5 Mental Health and Wellbeing Award **and** Level 6 Leadership Award



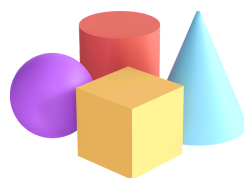
Back to choices

S3 CORE SUBJECT MATHEMATICS

(Dept. Mathematics)

What will you study?

- Maths helps us understand the world and manage everyday life.
- It lets us solve real-life problems and make smart predictions.
- Maths teaches us to analyse information, solve problems, assess risks, and make good decisions.
- It's interesting and creative, helping us think logically and abstractly.
- Maths is a universal language using numbers and symbols to share ideas clearly.
- It builds skills for life, learning, and work.
- Students will build on what they already know and learn to:
- Use algebra, geometry, trigonometry, and statistics.
- Improve reasoning and problem-solving skills.
- Develop strong numeracy and information-handling skills.



$$a^2 + b^2 = c^2$$

What pathways can I follow after S3?

S4

- N3/4/5 Mathematics
- N3/4/5 Application of Maths

S5/6

- N5/Higher Mathematics
- Advanced Higher Mathematics



Back to choices

S3 CORE SUBJECT

PHYSICAL EDUCATION

(Dept. Physical Education)

What will you study?

- Take part in a mix of team and individual sports and activities.
- Focus on improving thinking skills, physical ability, personal qualities, and fitness.
- Learn through participation, performance development, and improving health and wellbeing.
- Prepare for National Qualification PE and Health and Wellbeing awards.
- Use and improve movement skills and physical techniques.
- Work with others and compete fairly.
- Evaluate performance and appreciate others' efforts.
- Understand how health and wellbeing affect your life.



What pathways can I follow after S3?

S4

- N4/5 Physical Education
- Level 5 Sports Coaching

S5/6

- Higher Physical Education



Back to choices

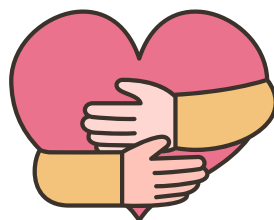
S3 CORE SUBJECT

RELIGIOUS EDUCATION

(Dept. Religious Education)

What will you study?

- Follows the This is Our Faith (TIOF) programme, taught from a Catholic perspective.
- Term 1:
 - Study the Gospel of Matthew.
 - Continue Called to Love (relationships and Church teaching).
 - Learn about Advent and Christmas.
- Term 2:
 - Explore Salvation, the Problem of Evil, and Catholic Social Teaching.
 - Research a Saint and present findings.
 - Study Sikhism, Lent, and charitable giving.
- Term 3:
 - Focus on Easter, Resurrection, Ascension, and Mary.
- Develop critical thinking, teamwork, research, and presentation skills.



What pathways can I follow after S3?

S4

- Core RE

S5/6

- S6 Caritas



Back to choices

S3 CORE SUBJECT

SPANISH

(Dept: Modern Languages)

What will you study?

- Developing your Spanish language in relation to the topics of:
 - health
 - your local area
 - employability



What pathways can I follow after S3?

S4

- National 3/4/5 Spanish

S5/6

- N5/Higher Spanish
- N5/Higher French
- Higher Italian (S6)
- Level 4/5 NPA Languages Passport

¡HOLA!



Back to choices