



S6

READY FOR THE CHALLENGE



Thursday 4th September 2025 | 7pm
Year Head: Mrs Farrell



AGENDA FOR THIS EVENING

S6 Year Group			
Time	Input	Presenter	Location
Please note that we cannot admit you prior to 6.45pm as the S4 session will be in progress.			
7pm	S5: Ready for the Challenge (Overview of the Year, Expectations, Key Dates)	Mrs Farrell S6 Year Head	Library
7.15pm	SCQF Pathways From Level 3 to Level 7 other qualifications at STA	SCQF Staff Team	Social Area
7.25pm	Study Skills How to access our Study Skills sessions on MS Teams	Mr Howe PT Raising Attainment	Social Area
7.35pm	Positive Pathways Key information and advice for post-school, including non-traditional pathways	Jackie O'Hare SDS Careers Advisor Evonne McHendry SDS Careers Advisor Kathleen Cusick DYW Co-ordinator	Social Area
7.45pm	Optional Drop-In for Pathways Queries Support for Learning, Pastoral Care, DYW and Careers Advisor	Various	Maths Rooms
8pm	END OF EVENT		



YEAR HEAD SESSION

1. SQA Attainment and Positive Destinations
2. High Attainment and SQA Policy
3. Working in Partnership
4. Key dates / timelines for this session
5. Planning for the next steps





STA: S6 ATTAINMENT IN S5

By the end of S5, no. of young people achieving:

1+ Award @ SCQF Level 6	18/19	19/20	20/21	21/22	22/23	23/24	24/25
	56%	65%	69.9%	68%	69%	60%	52%
3+ Awards @ SCQF Level 6	18/19	19/20	20/21	21/22	22/23	23/24	24/25
	27%	38%	41.5%	43%	37%	37%	29%
5+ Awards @ SCQF Level 6	18/19	19/20	20/21	21/22	22/23	23/24	24/25
	12%	17.5%	17.1%	23%	20%	14.3	14.1%

***Not yet including SQCF Level 6 qualifications delivered in STA / Senior Phase college.**



STA: POSITIVE DESTINATIONS

2024-25	Total % Positive
St Thomas Aquinas Secondary School	98.5%
Scotland	91.6%



S6 TOP TIPS



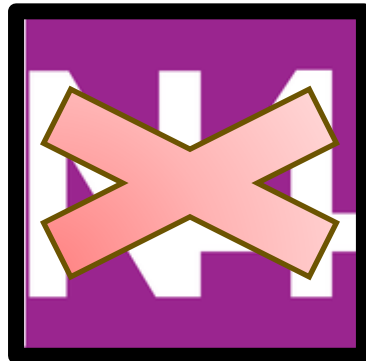
Realistic about work ethic / ability



Thoroughly research of what they wish to study/work as when they leave school



Listen to advice from teachers/SDS/DYW regarding pathways





SQA PRESENTATION LEVELS

- ➔ S5 attainment, performance in assessments, homework and attendance
- ➔ Numerous tracking points throughout the year
- ➔ Monitored rigorously and discussions / interventions between class teachers, principal teachers, young people and parents/ carers
- ➔ Prior learning/attainment vital for entry – continued high performance required for entry to final examination





NATIONAL QUALIFICATIONS

Higher

- SCQF Level 6
- External Exam
- Graded A-D
- Progression to Advanced Higher



Level 6

- SCQF Level 6
- No External Exam
- Pass or Fail
- Progression to Level 7





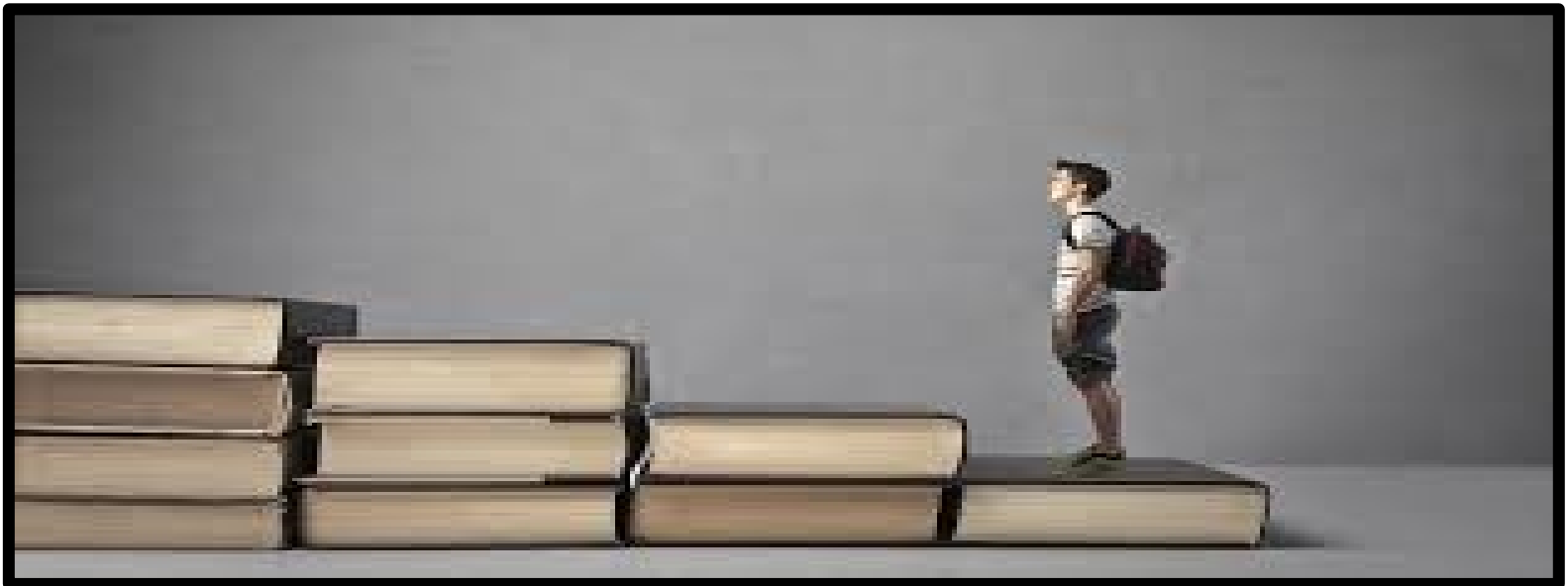
2025 NATIONAL QUALIFICATIONS

- ➔ Increase in candidate malpractice
- ➔ Use of AI
- ➔ Thorough investigation - final decision made by SQA
- ➔ Support to monitor this at home



STA : FACTORS THAT LEAD TO HIGH ATTAINMENT

- ➔ High Expectations and Standards
- ➔ High Quality of Learning & Teaching
- ➔ Rigorous Monitoring and Tracking of pupil Progress
- ➔ Student Support Programme



S6 STANDARDS AND EXPECTATIONS

- Attendance & timekeeping
- Effort
- Attitude
- Behaviour
- Uniform
- Active participation



S6 STANDARDS AND EXPECTATIONS

Student Support Programme

- ➔ Supported Study
- ➔ Metacognition and Study Skills
- ➔ Targeted HWB groups (e.g. Coping with Exam Stress Workshops)
- ➔ SDS / DYW
- ➔ Pastoral Care Support
- ➔ Year Head





THE S6 EXPERIENCE





THE S6 EXPERIENCE

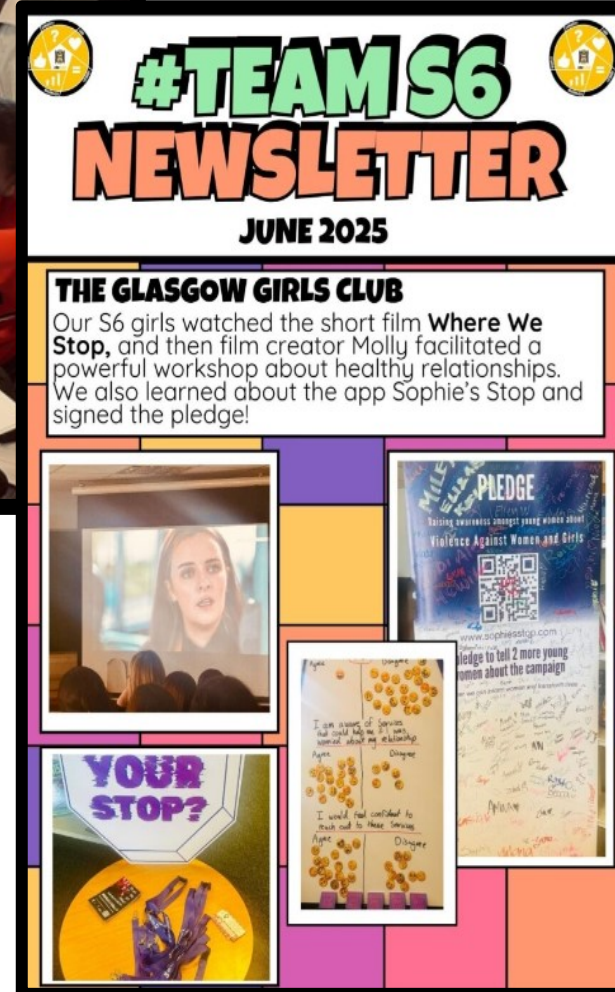
SCHOOL CAPTAIN ELECTIONS

2025 - 2026





THE S6 EXPERIENCE





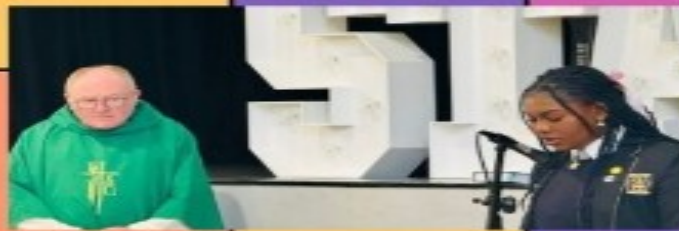
#TEAM S6 **NEWSLETTER**



JUNE 2025

CELEBRATION OF HOLY MASS

Well done to our readers for their contribution to the liturgy of this special Mass, celebrated by our wonderful Chaplain, Father Paul. Thanks to Mrs Humphreys for her organisation and preparation.





THE S6 EXPERIENCE

- ➔ Pupils must commit to all 5 courses
- ➔ College and UCAS offers (even if unconditional) are based on current curriculum
- ➔ References for UCAS can be and are updated if the pupil reference from December does not reflect pupil conduct / attainment later in the year
- ➔ ALWAYS HAVE A BACK UP!
- ➔ UCAS presentation – link will be sent





POSITIVE DESTINATIONS

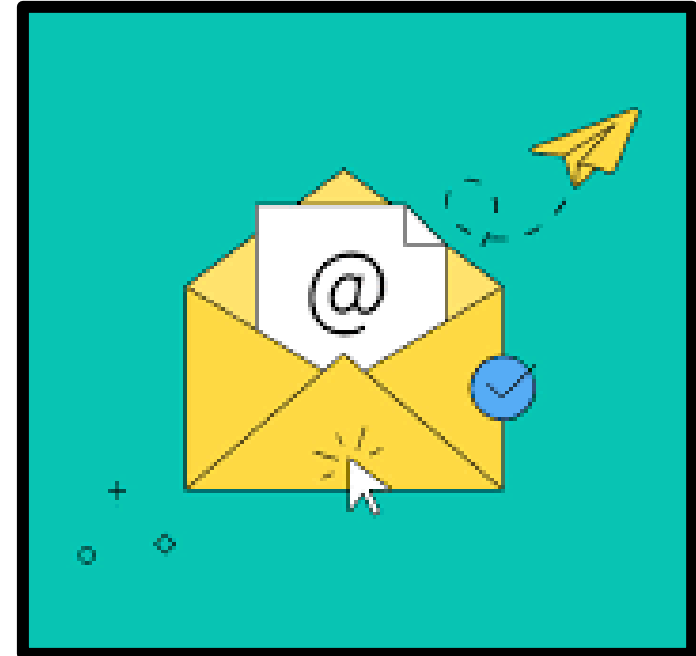
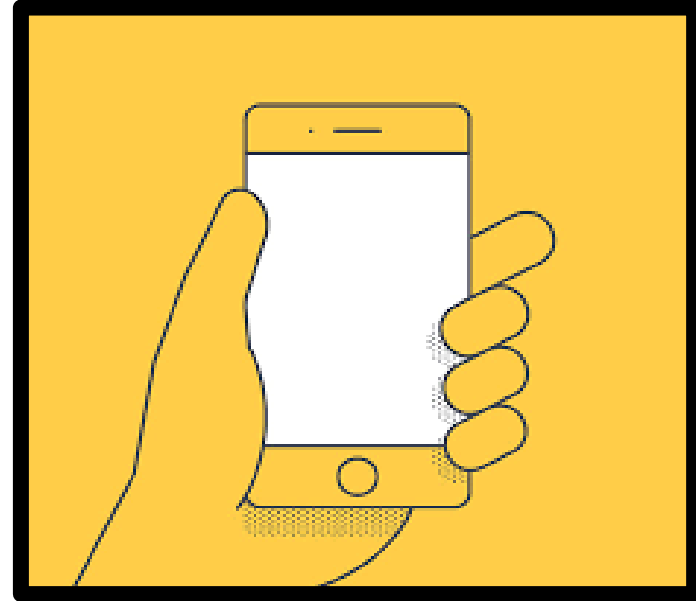
23-24	Total % Positive	Total % Negative
STA	99%	2.56%
Scotland	93.50%	6.5%

- ➔ 3 Careers Advisors from Skills Development Scotland
- ➔ 1 Developing the Young Workforce Co-ordinator
- ➔ 1 Work Experience Co-ordinator
- ➔ Monthly Positive Destination Meetings
- ➔ Track young people for 12 months post-school




INFORMATION SHARING

- ▶ All presentations and resources will be available on our school website
- ▶ You should have a hardcopy of the key dates/FAQs document
- ▶ Digital copy of Key Dates/FAQs document emailed to you tomorrow





WHAT'S NEXT?

7.15pm	SCQF Pathways From Level 3 to Level 7 other qualifications at STA	SCQF Staff Team	Social Area
7.25pm	Study Skills How to access our Study Skills sessions on MS Teams	Mr Howe PT Raising Attainment	Social Area
7.35pm	Positive Pathways Key information and advice for post-school, including non-traditional pathways	Jackie O'Hare SDS Careers Advisor Evonne McHendry SDS Careers Advisor Kathleen Cusick DYW Co-ordinator	Social Area
7.45pm	Optional Drop-In for Pathways Queries Support for Learning, Pastoral Care, DYW and Careers Advisor	Various	Maths Rooms 
8pm	END OF EVENT		