



SENIOR PHASE INFORMATION EVENING

Welcome!



S5

READY FOR THE CHALLENGE



Thursday 4th September 2025 | 7pm
Year Head: Miss Meehan



S5 Senior Phase Information Evening Agenda

| S5 Year Group | | | |
|--|--|--|-------------|
| Time | Input | Presenter | Location |
| Please note that we cannot admit you prior to 6.45pm as the S4 session will be in progress. | | | |
| 7pm – 7.15pm | S5: Ready for the Challenge (Overview of the Year, Expectations, Key Dates) | Ms Meehan S5 Year Head | Social Area |
| 7.15pm | SCQF Pathways From Level 3 to Level 7 other qualifications at STA | SCQF Staff Team | Social Area |
| 7.25pm | Study Skills How to access our Study Skills sessions on MS Teams | Mr Howe PT Raising Attainment | Social Area |
| 7.35pm | Positive Pathways Key information and advice for post-school, including non-traditional pathways | Jackie O'Hare SDS Careers Advisor Evonne McHendry SDS Careers Advisor Kathleen Cusick DYW Co-ordinator | Social Area |
| 7.45pm | Optional Drop-In for Pathways Queries Support for Learning, Pastoral Care, DYW and Careers Advisor | Various | Maths Rooms |
| 8pm | END OF EVENT | | |



S5 Ready for the Challenge

- Miss Claire Meehan
- Depute Head Teacher @STA (2016)
- Year Head of S5
- Whole School Remit: Student Support, Child protection and Safeguarding Coordinator
- Follow on X: @meehan_miss





S5 Ready for the Challenge Agenda

1. SQA Attainment and Positive Destinations
2. High Attainment and SQA Policy
3. Working in Partnership
4. Key dates / timelines for this session





1. STA SQA Attainment

By the end of S4, no. of pupils achieving:



| 5+ Award @ SCQF Level 3 or better | 18/19 | 19/20 | 20/21 | 21/22 | 22/23 | 23/24 | 24/25 |
|--|-------|-------|-------|-------|-------|-------|--------------|
| | 92% | 90% | 98% | 95% | 99% | 93.4% | <u>88.7%</u> |



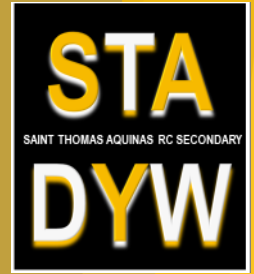
| 5+ Awards @ SCQF Level 4 or better | 18/19 | 19/20 | 20/21 | 21/22 | 22/23 | 23/24 | 24/25 |
|--|-------|-------|-------|-------|-------|-------|--------------|
| | 82% | 79% | 89% | 82% | 92% | 85.5% | <u>82.8%</u> |



| 5+ Awards @ SCQF Level 5 or better | 18/19 | 19/20 | 20/21 | 21/22 | 22/23 | 23/24 | 24/25 |
|---|-------|-------|-------|-------|-------|-------|--------------|
| | 45% | 44% | 47% | 50% | 44.3% | 47.1% | <u>42.1%</u> |

***Not yet including EVIP, and SCQF Levels 4/5/6 qualifications**

STA Positive Destinations



| 2024-25 | Total % Positive |
|---------------------------------------|------------------|
| St Thomas Aquinas Secondary School | 99.5% |
| Scotland | 91.6% |

STA : HIGH ATTAINMENT

- ➔ High Expectations and Standards
- ➔ High Quality of Learning & Teaching
- ➔ Rigorous Monitoring and Tracking of pupil Progress
- ➔ Student Support Programme



S5 STANDARDS AND EXPECTATIONS

- ➔ Attendance & timekeeping
- ➔ Effort
- ➔ Attitude
- ➔ Behaviour
- ➔ Uniform
- ➔ Active participation





S5 Personalisation and Choice

To ensure that your child has the best possible academic outcome in S5 they should consider the following:



Study their 5 strongest subjects



Have awareness of what they wish to study/work as when they leave school



Listen to advice from teachers/SDS/DYW regarding pathways

N3

N4

N5

H



S5 Personalisation and Choice

S4 Qualification

S5 Course

National 5 A-C Pass

Higher

National 5 D/ NA

Level 5 NPA

National 4 Pass

National 5/ Level
5 NPA

National 3 Pass

National 4/ Level
4 NPA



SQA PRESENTATION LEVELS

- ➔ S4 Attainment, performance in assessments, homework and attendance
- ➔ Numerous tracking points throughout the year
- ➔ Monitored rigorously and discussions / interventions between class teachers, principal teachers, young people and parents
- ➔ Prior learning/attainment vital for entry – continued high performance required for entry to final examination





NATIONAL QUALIFICATIONS

National 5

- SCQF Level 5
- External Exam
- Graded A-D
- Progression to Higher



Level 5

- SCQF Level 5
- No External Exam
- Pass or Fail
- Progression to Level 6





NATIONAL QUALIFICATIONS

Higher

- SCQF Level 6
- External Exam
- Graded A-D
- Progression to Advanced Higher



Level 6

- SCQF Level 6
- No External Exam
- Pass or Fail
- Progression to Level 7





S5 NATIONAL QUALIFICATIONS

- ➔ Increase in candidate malpractice
- ➔ Use of AI
- ➔ Thorough investigation - final decision made by SQA
- ➔ Support to monitor this at home



WORKING WITH PARENTS AND CARERS



WORKING WITH PARENTS AND CARERS

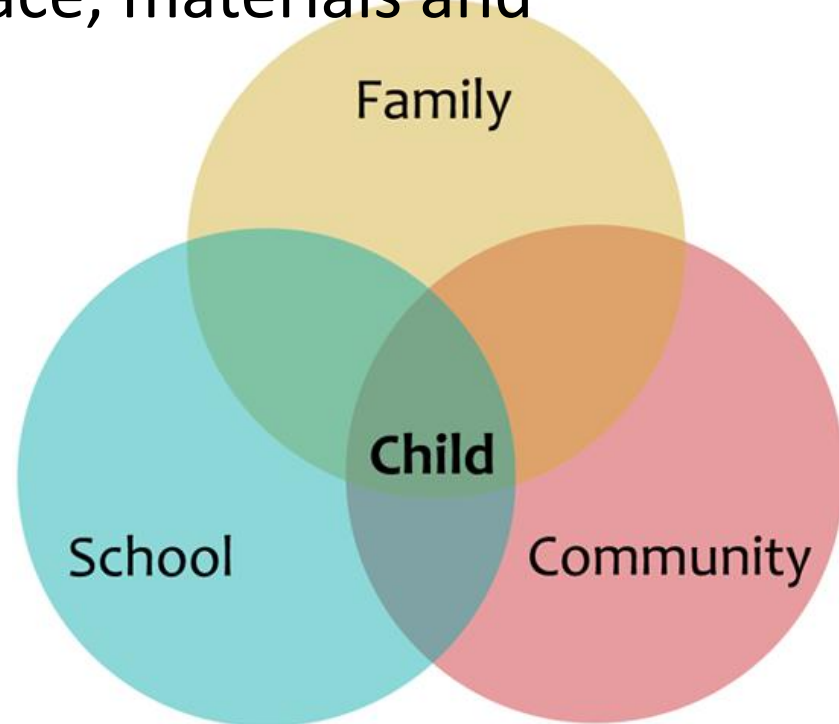


- ➔ We are keen to work closely with you as partners
- ➔ Your young person will find this session challenging
- ➔ They may struggle with their workload
- ➔ Your support will make the difference



WORKING WITH PARENTS AND CARERS

- ➔ Supporting STA's High Standards and Expectations
- ➔ Maintaining communication
- ➔ Monitoring homework diaries, coursework and assessments and deadlines
- ➔ Study environment (space, materials and distractions)
- ➔ Time Management
- ➔ Study Planning
- ➔ Phones
- ➔ Routine
- ➔ Resilience
- ➔ Health & well-being



S5 STANDARDS AND EXPECTATIONS

Student Support Programme

- ➔ Supported Study
- ➔ Metacognition and Study Skills
- ➔ Targeted HWB groups (e.g. Coping with Exam Stress Workshops)
- ➔ Easter School
- ➔ Pastoral Care Support
- ➔ Year Head





KEY DATES TERM 1

| MONTH | ACTIVITY |
|------------------------|---|
| August - October | <ul style="list-style-type: none">➔ Class tests➔ On-going assessments➔ Senior Phase Awards Ceremony (11.09.25)➔ Study Skills for Parents/ Carers (06.10.25)➔ College Application Support (13.10.25 -October Week) |



KEY DATES TERM 2

| MONTH | ACTIVITY |
|--------------------------|---|
| October - December | <ul style="list-style-type: none">➤ Positive Destinations Evening (21.10.25)➔ Tracking Report 1 (29.10.25)➔ Progress and Achievement Evening 1 (04.11.25)➔ Interim Assessments (01.12.25 – 17.12.25) |



KEY DATES TERM 3

| MONTH | ACTIVITY |
|-----------------------|--|
| January - March | <ul style="list-style-type: none">→ Class tests→ On-going assessments→ Staff Moderation of Interim Assessments→ Interim Assessment Results (21.01.26)→ Post-Interim Assessment Interventions→ Additional Assessment Arrangements→ Progress and Achievement Evening 2 (12.02.26)→ Supported Study→ Tracking Report 2 (25.03.26)→ Final SQA Presentation levels and Estimates |



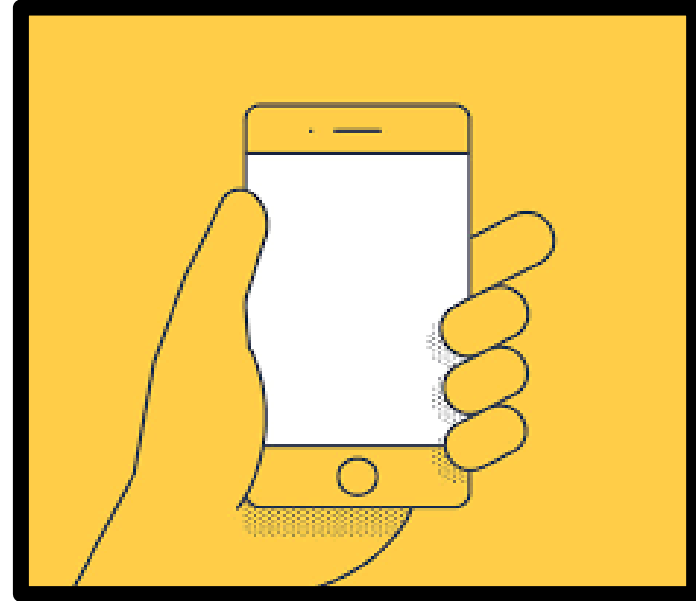
KEY DATES TERM 4

| MONTH | ACTIVITY |
|--------------------|---|
| April - June | <ul style="list-style-type: none">→ Easter School→ SQA Exam Diet begins (22.04.26)→ SQA Exam Diet ends (1.6.26)→ S5 Induction day <p>SQA Results Day 04.08.26</p> |



INFORMATION SHARING

- ▶ All presentations and resources will be available on our school website
- ▶ You should have a hardcopy of the key dates/FAQs document
- ▶ Digital copy of Key Dates/FAQs document emailed to you tomorrow





WHAT'S NEXT?

| S5 Year Group | | | |
|--|--|--|-------------|
| Time | Input | Presenter | Location |
| Please note that we cannot admit you prior to 6.45pm as the S4 session will be in progress. | | | |
| 7pm – 7.15pm | S5: Ready for the Challenge (Overview of the Year, Expectations, Key Dates) | Ms Meehan S5 Year Head | Social Area |
| 7.15pm | SCQF Pathways From Level 3 to Level 7 other qualifications at STA | SCQF Staff Team | Social Area |
| 7.25pm | Study Skills How to access our Study Skills sessions on MS Teams | Mr Howe PT Raising Attainment | Social Area |
| 7.35pm | Positive Pathways Key information and advice for post-school, including non-traditional pathways | Jackie O'Hare SDS Careers Advisor Evonne McHendry SDS Careers Advisor Kathleen Cusick DYW Co-ordinator | Social Area |
| 7.45pm | Optional Drop-In for Pathways Queries Support for Learning, Pastoral Care, DYW and Careers Advisor | Various | Maths Rooms |
| 8pm | END OF EVENT | | |