



# **SENIOR PHASE INFORMATION EVENING**

***Welcome!***



# S4

## READY FOR THE CHALLENGE



**Thursday 4<sup>th</sup> September 2025 | 6pm**  
**Year Head: Mrs Ritchie**



S4 Year Group			
Time	Input	Presenter	Location
6.00pm	S4: Ready for the Challenge (Overview of the Year, Expectations, Key Dates)	Mrs Ritchie S4 Year Head	Social Area (seating)
6.15pm	SCQF Pathways From Level 3 to Level 7 other qualifications at STA	SCQF Staff Team (Mrs Cohen and Mrs Stewart)	Social Area (seating)
6.25pm	Study Skills How to access our Study Skills sessions on MS Teams	Mr Howe PT Raising Attainment	Social Area (seating)
6.35pm	Positive Pathways Key information and advice for post-school, including college, apprenticeships and UCAS information.	Jackie O'Hare SDS Careers Advisor Evonne McHendry SDS Careers Advisor Kathleen Cusick DYW Co-ordinator	Social Area (seating)
6.45pm	Optional Drop-In for Pathways Queries Support for Learning, Pastoral Care, DYW and Careers Advisor	Various	Maths Rooms
6.55pm	End of Event <b>Please exit building ASAP to allow the S5/6 session to start promptly at 7pm.</b>		



# STA: S4 ATTAINMENT

By the end of S4, no. of young people achieving:

5+ Award @ SCQF Level 3	19/20	20/21	21/22	22/23	23/24	24/25*
	90%	98%	95%	99%	93%	89%

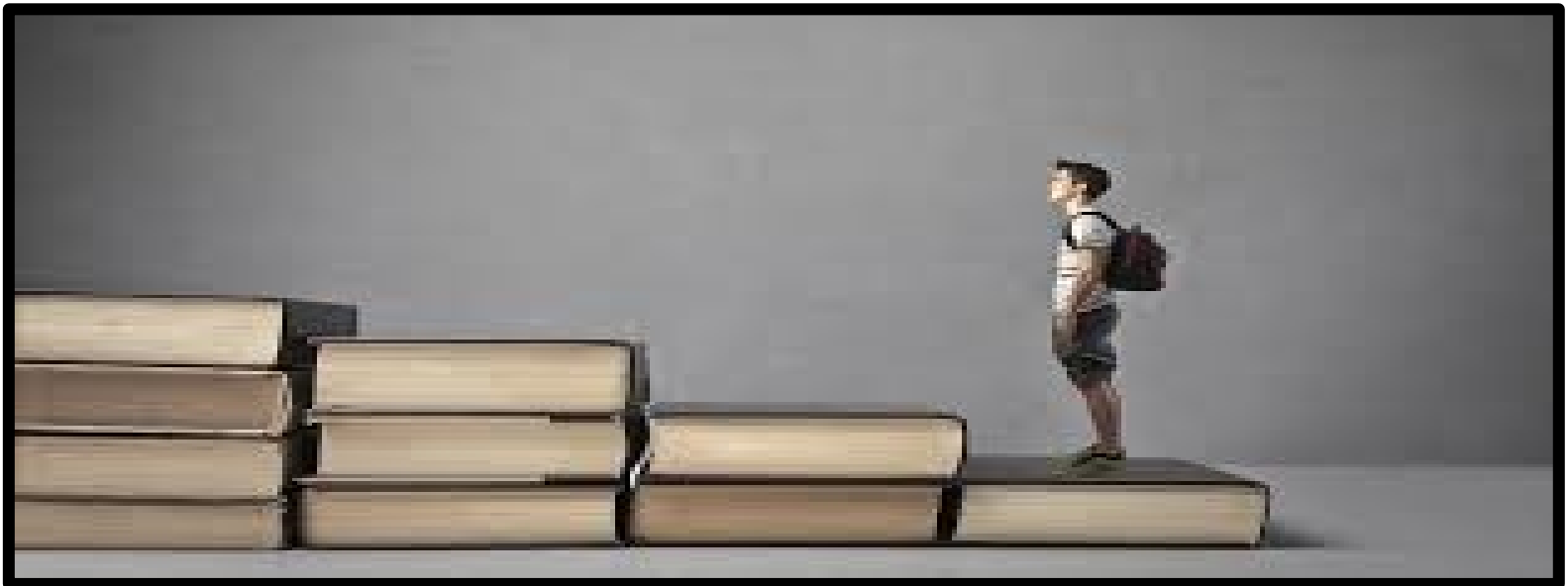
5+ Award @ SCQF Level 4	19/20	20/21	21/22	22/23	23/24	24/25*
	79%	89%	82%	92%	86%	83%

5+ Awards @ SCQF Level 5	19/20	20/21	21/22	22/23	23/24	24/25*
	44%	47%	50%	44%	47%	42%

**\*Not yet including SQCF Level 4/5/6 qualifications**

# **STA : FACTORS THAT LEAD TO HIGH ATTAINMENT**

- ➔ High Expectations and Standards
- ➔ High Quality of Learning & Teaching
- ➔ Rigorous Monitoring and Tracking of pupil Progress
- ➔ Student Support Programme



# S4 STANDARDS AND EXPECTATIONS

- ➔ Attendance & timekeeping
- ➔ Effort
- ➔ Attitude
- ➔ Behaviour
- ➔ Uniform
- ➔ Preparation



# **S4 STANDARDS AND EXPECTATIONS**

## **Student Support Programme**

- ➔ PT Raising Attainment
- ➔ Supported Study
- ➔ Metacognition and Study Skills
- ➔ Targeted HWB groups (e.g. Coping with Exam Stress Workshops)
- ➔ Easter School
- ➔ Pastoral Care Support
- ➔ Year Head





# **SUPPORTING YOUR CHILD**

- ➔ Study environment (space, materials and distractions)
- ➔ Time management & study planner
- ➔ Attendance & timekeeping
- ➔ Hard-work and effort
- ➔ Prepared to learn
- ➔ Homework & assessment deadlines
- ➔ Support STA's high expectations & standards





# WORKING IN PARTNERSHIP



# **S4 NATIONAL QUALIFICATIONS**

**N3**

- ➔ SCQF Level 3
- ➔ Internal Unit Assessments
- ➔ Graded Pass or Fail

**N4**

- ➔ SCQF Level 4
- ➔ Internal Unit Assessments including an Added Value Unit (AVU)
- ➔ Graded Pass or Fail

**N5**

- ➔ SCQF Level 5
- ➔ Exam and Assignments/ Performances etc
- ➔ Graded A-D



# **S4 NATIONAL QUALIFICATIONS**

- ➔ Presentation levels depend on BGE attainment evidence
- ➔ Levels communicated in tracking reports
- ➔ Levels may change
- ➔ Aspirational and realistic
- ➔ Other qualifications & pathways
- ➔ Final presentation levels and attainment will impact choices in S5



# **S4 NATIONAL QUALIFICATIONS**

- ➔ Increase in candidate malpractice
- ➔ Use of AI
- ➔ Thorough investigation - final decision made by SQA
- ➔ Support to monitor this at home





# KEY DATES TERM 1

MONTH	ACTIVITY
August - October	<ul style="list-style-type: none"><li>➔ Class tests</li><li>➔ On-going assessments</li><li>➔ Senior Phase Awards Ceremony (11.09.25)</li><li>➔ Study Skills for Parents/ Carers (06.10.25)</li><li>➔ College Application Support (13.10.25 -October Week)</li><li>➔ Positive Destinations Evening (21.10.25)</li></ul>



# KEY DATES TERM 2

MONTH	ACTIVITY
October - December	<ul style="list-style-type: none"><li>➔ Tracking Report 1 (29.10.25)</li><li>➔ Progress and Achievement Evening 1 (11.11.25)</li><li>➔ Interim Assessments (01.12.25 – 17.12.25)</li></ul>



# KEY DATES TERM 3

MONTH	ACTIVITY
January - March	<ul style="list-style-type: none"><li>→ Class tests</li><li>→ On-going assessments</li><li>→ Staff Moderation of Interim Assessments</li><li>→ Interim Assessment Results (21.01.26)</li><li>→ Post-Interim Assessment Interventions</li><li>→ Additional Assessment Arrangements</li><li>→ Progress and Achievement Evening 2 (5.02.26)</li><li>→ Supported Study</li><li>→ Tracking Report 2 (25.03.26)</li><li>→ Final SQA Presentation levels and Estimates</li></ul>



# KEY DATES TERM 4

MONTH	ACTIVITY
April - June	<ul style="list-style-type: none"><li>→ Easter School</li><li>→ SQA Exam Diet begins (22.04.26)</li><li>→ SQA Exam Diet ends (1.6.26)</li><li>→ S5 Induction day</li></ul> <p><b>SQA Results Day 04.08.26</b></p>





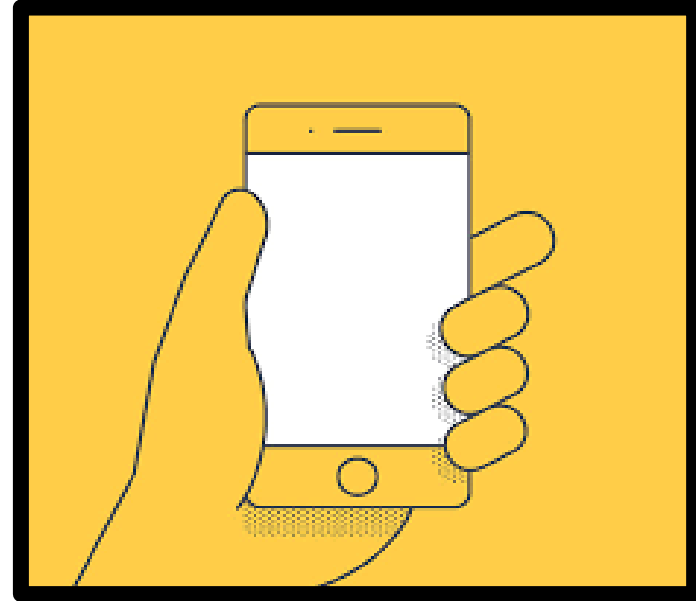
# POSITIVE DESTINATIONS

2023-24	Total % Positive
STA	99.5%
Scotland	91%

- ➔ 3 Careers Advisors from Skills Development Scotland
- ➔ 1 Developing the Young Workforce Co-ordinator
- ➔ 1 Work Experience Co-ordinator
- ➔ Monthly Positive Destination Meetings
- ➔ Track young people for 12 months post-school

# INFORMATION SHARING

- ▶ All presentations and resources will be available on our school website
- ▶ You should have a hard copy of the key dates/FAQs document
- ▶ Digital copy of Key Dates/FAQs document emailed to you





**ST THOMAS AQUINAS SECONDARY SCHOOL**  
**#beCLEAR**

# WHAT'S NEXT?

*thank  
you*