

ST THOMAS AQUINAS SECONDARY SCHOOL

#beCLEAR



SENIOR PHASE INFORMATION EVENING

Welcome!

ST THOMAS AQUINAS SECONDARY SCHOOL

#beCLEAR



\$5

READY FOR THE CHALLENGE



Thursday 5th September 2024 | 7pm
Year Head: Mrs Farrell



STA: S5 ATTAINMENT IN S4

By the end of S4, no. of young people achieving:

5+ Award @ SCQF Level 3 or better	18/19	19/20	20/21	21/22	22/23	23/24*
	92%	90%	98%	95%	99%	94%
5+ Awards @ SCQF Level 4 or better	18/19	19/20	20/21	21/22	22/23	23/24*
	82%	79%	89%	82%	92%	86%
5+ Awards @ SCQF Level 5 or better	18/19	19/20	20/21	21/22	22/23	23/24*
	45%	44%	47%	50%	44.3% (65.2%)	39% (47.1%)

*Not yet including EVIP, and SQCF Level 4/5/6 qualifications



STA: LAST YEAR'S S5 ATTAINMENT

By the end of S5, no. of young people achieving:

1+ Award @ SCQF Level 6	18/19	19/20	20/21	21/22	22/23	23/24*
	56%	65%	69.9%	68%	69%	60%
3+ Awards @ SCQF Level 6	18/19	19/20	20/21	21/22	22/23	23/24*
	27%	38%	41.5%	43%	37%	37%
5+ Awards @ SCQF Level 6	18/19	19/20	20/21	21/22	22/23	23/24*
	12%	17.5%	17.1%	23%	20%	14.3%

*Not yet including SQCF Level 4/5/6 qualifications



STA : HIGH ATTAINMENT

- ➔ High Expectations and Standards
- ➔ High Quality of Learning & Teaching
- ➔ Rigorous Monitoring and Tracking of pupil Progress
- ➔ Student Support Programme





S5 STANDARDS AND EXPECTATIONS

→ Attendance
&
timekeeping

→ Effort

→ Attitude

→ Behaviour

→ Uniform

→ Active

participation





S5 STANDARDS AND EXPECTATIONS

Student Support Programme

- ➔ Supported Study
- ➔ Metacognition and Study Skills
- ➔ Targeted HWB groups (e.g. Coping with Exam Stress Workshops)
- ➔ Easter School
- ➔ Pastoral Care Support
- ➔ Year Head





WORKING WITH PARENTS AND CARERS



- We are keen to work closely with you as partners
- Your young person will find this session challenging
- They may struggle with their workload
- Your support will make the difference

WORKING WITH PARENTS AND CARERS

Resilience Is...

the ability to
anticipate
adapt
flourish

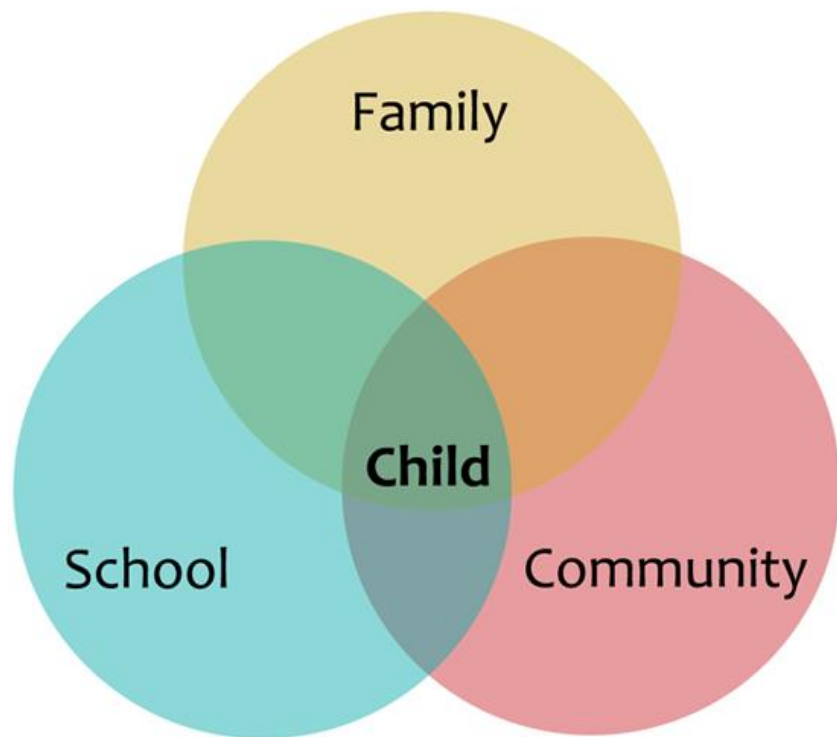
in the face of change





WORKING WITH PARENTS AND CARERS

- ➔ Supporting STA's High Standards and Expectations
- ➔ Monitoring homework, coursework and assessments and deadlines
- ➔ Time Management
- ➔ Study Planning
- ➔ Study Environment
- ➔ Phones
- ➔ Routine
- ➔ Resilience
- ➔ Health & well-being



NATIONAL QUALIFICATIONS

THE SCOTTISH CREDIT AND QUALIFICATIONS FRAMEWORK

This Framework diagram has been produced to show the mainstream Scottish qualifications already credit rated by SQA and HEIs. However, there are a diverse number of learning programmes on the Framework, which, due to the limitations of this format, cannot be represented here. For more information, please visit the SCQF website at www.scqf.org.uk to view the interactive version of the Framework or search the Database.



SCQF Levels	SQA Qualifications			Qualifications of Higher Education Institutions	Apprenticeships & SVQs
12				Doctoral Degree	Professional Apprenticeship
11				Masters Degree, Integrated Masters Degree, Post Graduate Diploma, Post Graduate Certificate	Graduate Apprenticeship Professional Apprenticeship SVQ
10				Honours Degree, Graduate Diploma, Graduate Certificate	Graduate Apprenticeship Professional Apprenticeship
9			Professional Development Award	Bachelors / Ordinary Degree, Graduate Diploma, Graduate Certificate	Graduate Apprenticeship Technical Apprenticeship SVQ
8		Higher National Diploma		Diploma Of Higher Education	Higher Apprenticeship Technical Apprenticeship SVQ
7	Advanced Higher, Awards, Scottish Baccalaureate	Higher National Certificate		Certificate Of Higher Education	Modern Apprenticeship SVQ
6	Higher, Awards, Skills for Work Higher				Modern Apprenticeship Foundation Apprenticeship SVQ
5	National 5, Awards, Skills for Work National 5				Modern Apprenticeship SVQ
4	National 4, Awards, Skills for Work National 4	National Certificate	National Progression Award		SVQ
3	National 3, Awards, Skills for Work National 3				
2	National 2, Awards				
1	National 1, Awards				

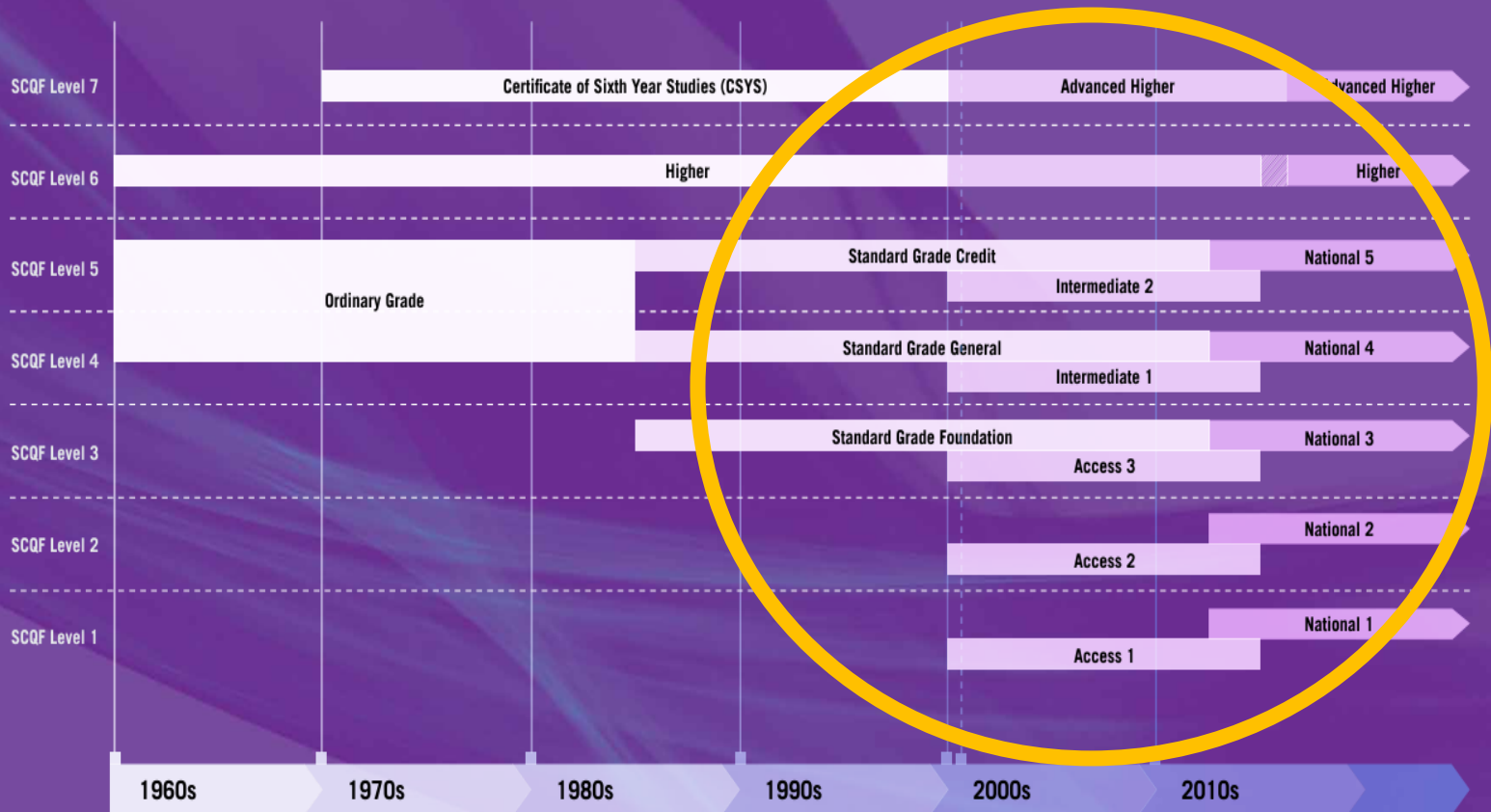


NATIONAL QUALIFICATIONS



SCOTTISH NATIONAL QUALIFICATIONS - SCQF LEVELS AND TIMELINES

This table shows how current and old qualifications relate to one another in terms of their SCQF level. The SCQF level of a qualification provides a way of comparing how demanding or difficult the learning involved in achieving a qualification is. This table can be used by anybody with a need to understand National Qualifications (normally awarded at school), for example employers when recruiting. More information on the SCQF can be found on our website (www.scqf.org.uk). More information on current qualifications in the table can be found by visiting the SQA website (www.sqa.org.uk/cte).





NATIONAL QUALIFICATIONS

National 5

- SCQF Level 5
- External Exam
- Graded A-D
- Progression to Higher



Level 5

- SCQF Level 5
- No External Exam
- Pass or Fail
- Progression to Level 6





NATIONAL QUALIFICATIONS

Higher

- SCQF Level 6
- External Exam
- Graded A-D
- Progression to Advanced Higher



Level 6

- SCQF Level 6
- No External Exam
- Pass or Fail
- Progression to Level 7

SCQF LEVEL 6



SQA PRESENTATION LEVELS

- ➔ S4 Attainment, performance in assessments, homework and attendance
- ➔ Numerous tracking points throughout the year
- ➔ Monitored rigorously and discussions / interventions between class teachers, principal teachers, young people and parents
- ➔ Prior learning/attainment vital for entry – continued high performance required for entry to final examination





KEY DATES TERM 1

MONTH	ACTIVITY
August - October	<ul style="list-style-type: none">➔ Class tests➔ On-going assessments➔ Senior Phase Awards Ceremony (14.09.24)➔ Study Skills for Parents/ Carers (03.10.24)➔ College Application Support (October Week)➔ Positive Destinations Evening (24.10.24)➔ Tracking Report 1 (28.10.24)



KEY DATES TERM 2

MONTH	ACTIVITY
October - December	<ul style="list-style-type: none">→ Class tests→ On-going assessments→ Positive Destinations Evening (24.10.24)→ Tracking Report 1 (28.10.24)→ Progress and Achievement Evening 1 (13.11.24)→ Interim Assessments (02.12.24 – 18.12.24)



KEY DATES TERM 3

MONTH	ACTIVITY
January - March	<ul style="list-style-type: none">→ Class tests→ On-going assessments→ Staff Moderation of Interim Assessments→ Interim Assessment Results (22.01.25)→ Post-Interim Assessment Interventions→ Additional Assessment Arrangements→ S6 Personalisation and Choice interviews→ Progress and Achievement Evening 2 (12.02.25)→ Supported Study→ Tracking Report 2 (31.03.25)→ Final SQA Presentation levels and Estimates



KEY DATES TERM 4

MONTH	ACTIVITY
April	<ul style="list-style-type: none">→ Easter School→ SQA Exam Diet begins 28.04.25→ S6 Induction Programme (June tbc)
-	
June	SQA Results Day 05.08.25



POSITIVE DESTINATIONS

2022-23	Total % Positive	Total % Negative
STA	97.44%	2.56%
Scotland	93.50%	6.5%

- ➔ 3 Careers Advisors from Skills Development Scotland
- ➔ 1 Developing the Young Workforce Co-ordinator
- ➔ 1 Work Experience Co-ordinator
- ➔ Monthly Positive Destination Meetings
- ➔ Track young people for 12 months post-school

TOP-UP AND REACH

Top-Up

The programme is a reparation course for pupils who are currently applying for, or are considering applying for, Higher Education courses in university or college.

If a pupil secures a profile of BBB or above, Top-Up will then pass their Profiles to all the universities to which the pupils have applied to. This could allow the pupil to receive an **adjusted offer of entry**.

The Top-Up programme will run in 2 cohorts.

- Cohort 1 -**
- October 2024: Introduction Session in school.
 - 4th November 2024 - 13th December 2025: 6 week online programme. Essay due w/c 16th Dec.
 - March 2025: Campus session at University of Glasgow.
- Cohort 2 -**
- January 2025: Introduction Session in school.
 - 27th January 2025 - 7th March 2025: 6 week online programme. Essay due w/c 10th March
 - March 2025: Campus session at University of Glasgow.

The programme is available to pupils who meet the following eligibility criteria:

- Live in SIMD decile 1-4 (SIMD 20/40)
- Are care experienced
- Are estranged from family and living without family support
- Are a carer (provide unpaid care)
- Are seeking asylum in the UK
- Have refugee status

Miss Wong and Mr McGraw will post on the pupils' year group teams soon for pupils to sign up!

Reach

Reach supports access to four professional degrees offered by the University - **Dentistry, Law, Medicine and Veterinary Medicine**.

If a pupils are successful in passing Reach, Reach will then pass their Profiles to all the universities to which the pupils have applied to. This could allow the pupil to receive an **adjusted offer of entry**.

The programme is available to pupils who meet the following eligibility criteria:

- Live in SIMD decile 1-4 (SIMD 20/40)
- Are care experienced
- Are estranged from family and living without family support
- Are a carer (provide unpaid care)
- Are seeking asylum in the UK
- Have refugee status

Reach timetable

Miss Wong and Mr McGraw will post on the pupils' year group teams soon for pupils to sign up!

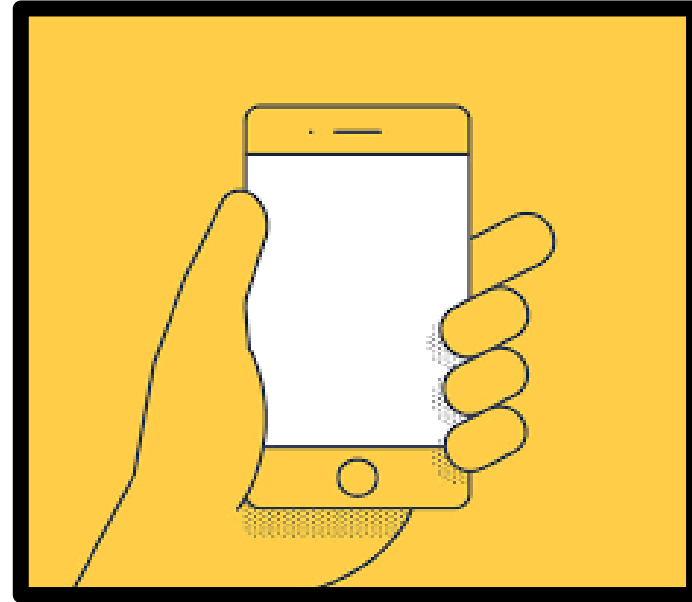
2nd October 2024	Registration deadline.	ALL S5 Pupils AND NEW S6 pupils applying to Medicine, Dentistry and Veterinary Medicine ONLY.	Pupils must meet WP criteria. If not then application must be made by school for consideration under extenuating circumstances.
27th October 2024	Deadline for Written Assignment and Reflective Essay.	NEW S6 registrants applying to Medicine, Dentistry and Veterinary Medicine ONLY.	
Early October 2024	Personal statement feedback returned	S6 participants who submitted on 15th September.	
Early November - Mid December 2024	Cohort 1 - Online school lessons for Reach & Access subjects.	S5 pupils	We would prefer all pupils take part in Cohort 1 but will likely run a 2nd Cohort for late registrations from early Feb 2024
3rd November 2024	Deadline for submission of personal statement for review.	S6 participants applying to Law and Access subjects ONLY.	Submit statement via webform
Mid/Late November 2024	Online interview workshop.	S6 participants applying to Medicine, Dentistry and Veterinary Medicine ONLY.	
Mid November 2024	Personal statement feedback returned.	S6 participants who submitted on 3rd November.	
3rd November 2024	Registration deadline.	NEW S6 pupils applying to Law and Access professions ONLY.	Pupils must meet WP criteria. If not then application must be made by school for consideration under extenuating circumstances.
13th November 2024	Deadline for Written Assignment and Reflective Essay.	NEW S6 registrants applying to Law and Access professions ONLY.	
15th January 2025	Registration deadline for S5 pupils to participate in Cohort 2 online sessions	S5 pupils	Pupils must meet WP criteria. If not then application must be made by school for consideration under extenuating circumstances.
Early Feb-Mid March 2025	Cohort 2 - Online school lessons for Reach & Access subjects	S5 pupils	
Late February 2025	Registration deadline for S4 pupils.	S4 pupils	Pupils must meet WP criteria.
March 2025	Online or in-school sessions for Reach & Access subjects.	S4 pupils	Pupils must meet WP criteria.
Mid June 2025	Access Campus day.	S5 pupils who have completed the essay assignment.	
Late June 2025	Reach Campus week.	S5 pupils who have completed the essay assignment.	





INFORMATION SHARING

- ▶ All presentations and resources will be available on our school website
- ▶ You should have a hardcopy of the key dates/FAQs document
- ▶ Digital copy of Key Dates/FAQs document emailed to you tomorrow





WHAT'S NEXT?

7.20pm - 7.25pm	Study Skills How to access our Study Skills sessions on Teams	Mr Houston Acting Faculty Head of Science	Library <i>(seating)</i>
7.25pm -7.35pm	Positive Pathways Key information and advice for alternative pathways and post school support/transition	Jackie O'Hare SDS Careers Advisor Evonne McHendry SDS Careers Advisor Kathleen Cusick DYW Co-ordinator	Library <i>(seating)</i>
7.40pm - 7.55pm	UCAS Application Process Key information for current or future UCAS applicants	Mr McGraw PT Pastoral Care	Social Area <i>(seating)</i>
8pm	END OF EVENT		

thank
you