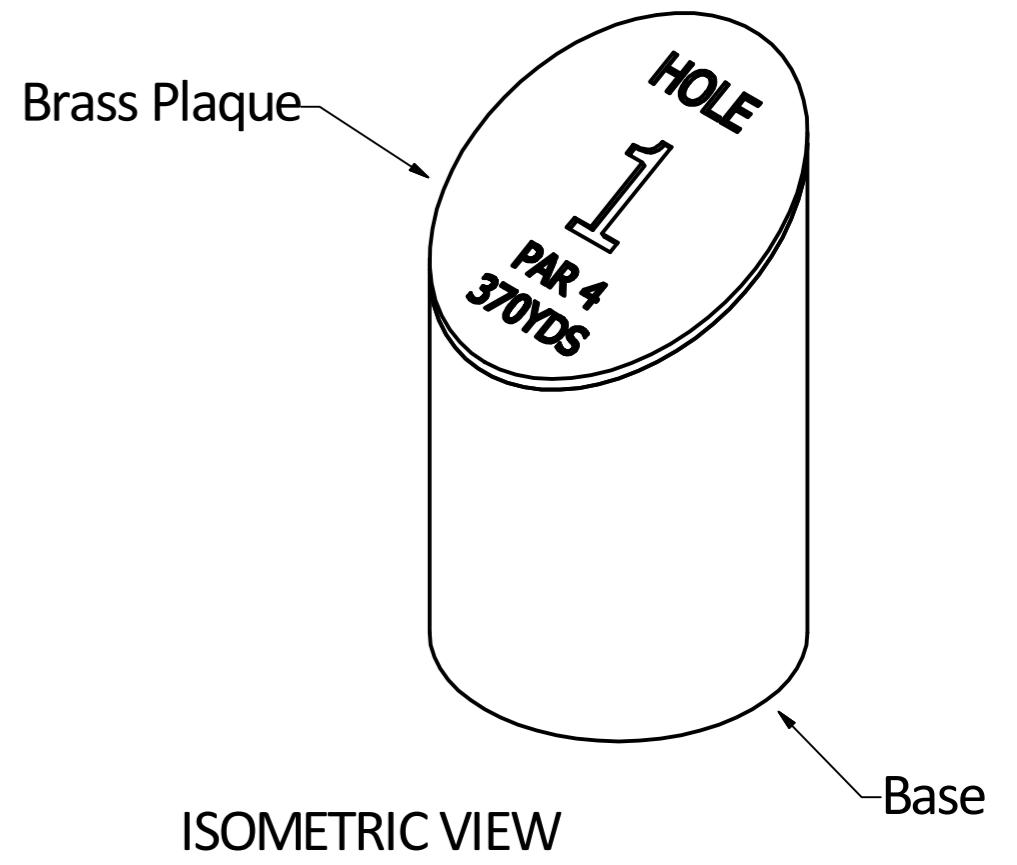
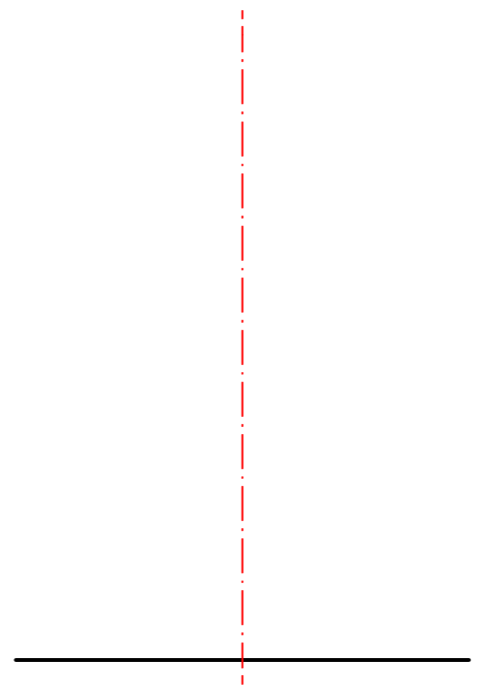
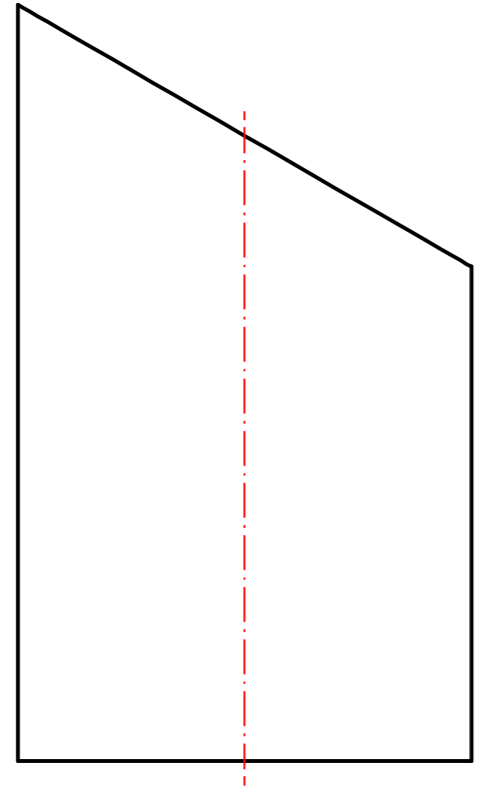
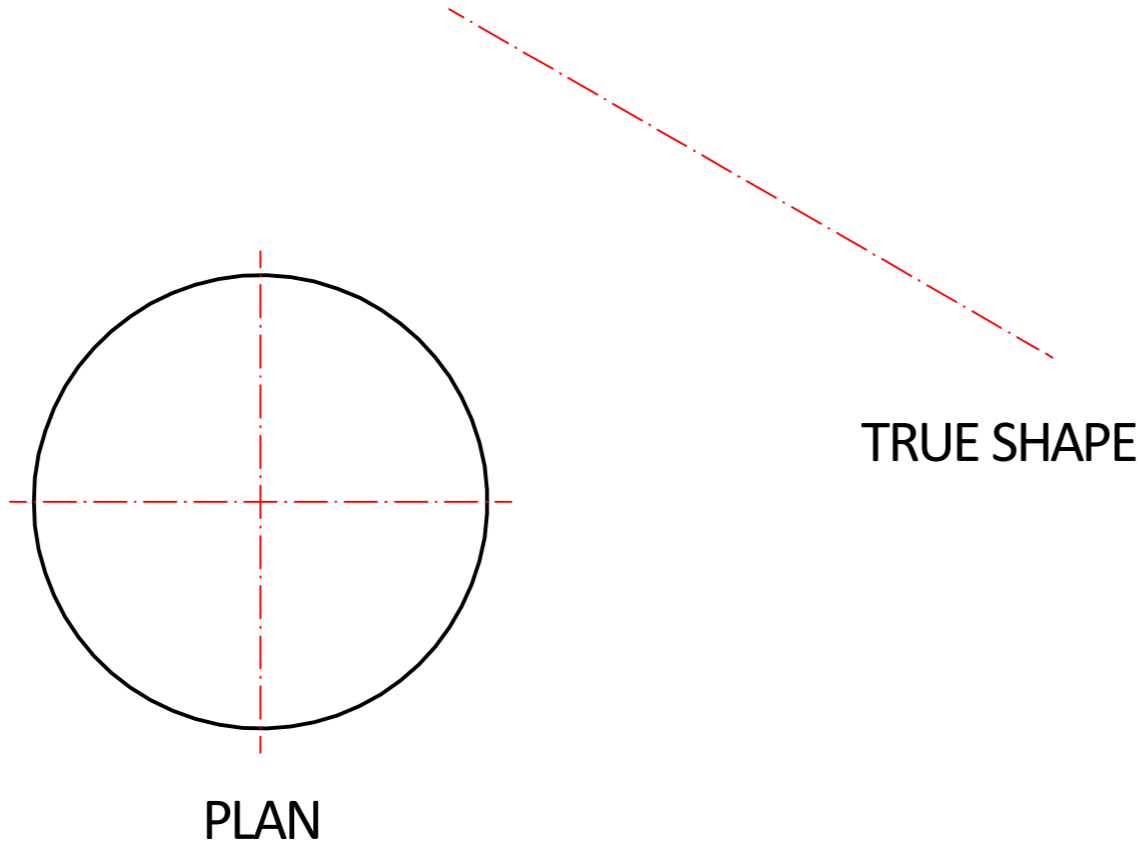


The elevation and plan of a Tee Marker are shown.

DRAW
 a, the end elevation of the base part.
 b, the true shape to show the actual size of the plaque.

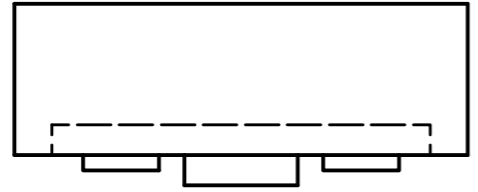
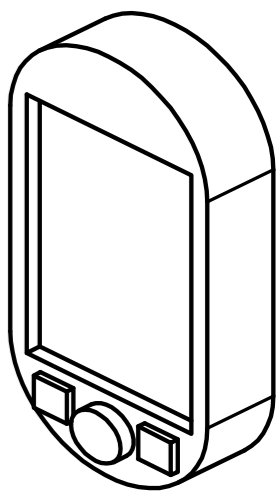


Area of Ability	Good	Ok	Improve
Use of Construction lines			
Correct use of bounce line			
Clock face method used on plan			
Draught personship			
Quality of freehand curve			
Correct angle projected for true shape			

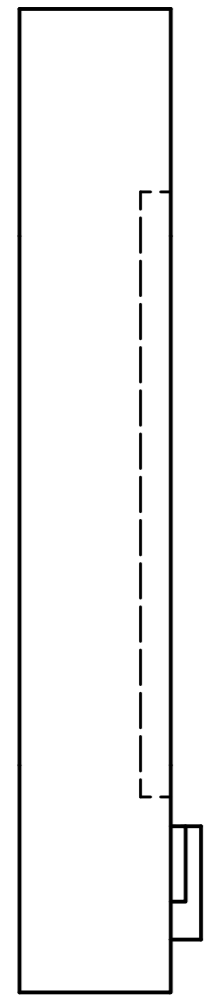
The elevation, plan and end elevation of a GPS Device are shown.

DRAW
a, The **oblique** view of the device from the given start point.

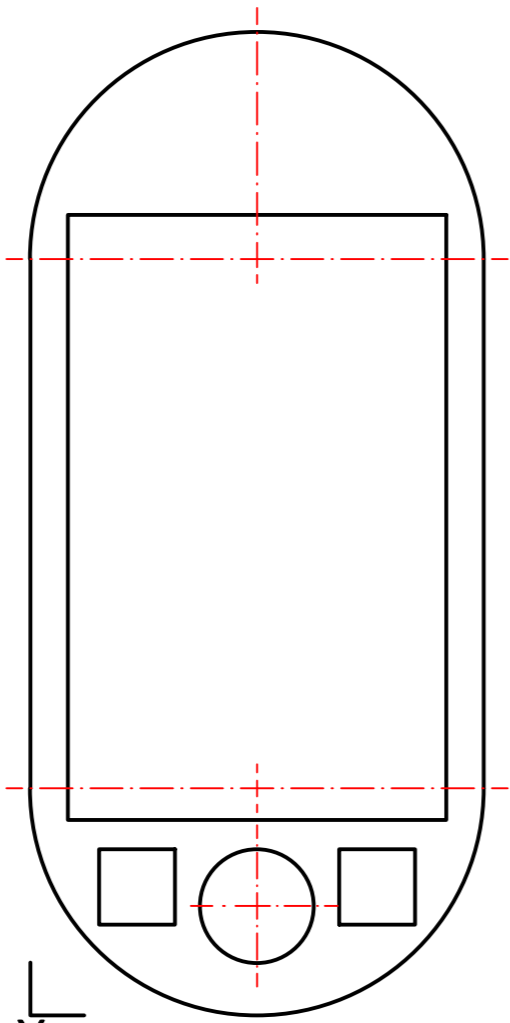
Area of Ability	Good	Ok	Improve
Use of construction lines			
Draught personship			
Widths halved when requested			
circles/arcs joint with 45degree line			



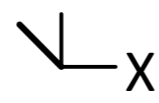
PLAN

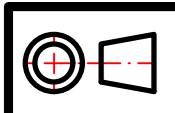


END ELEVATION



ELEVATION





GOLF

LOCKER ROOM

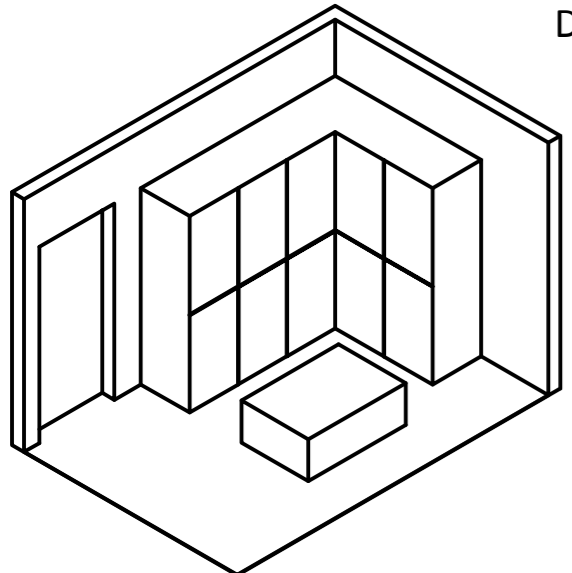
NAME



The elevation, plan, end elevation and pictorial view of a small locker room are shown.

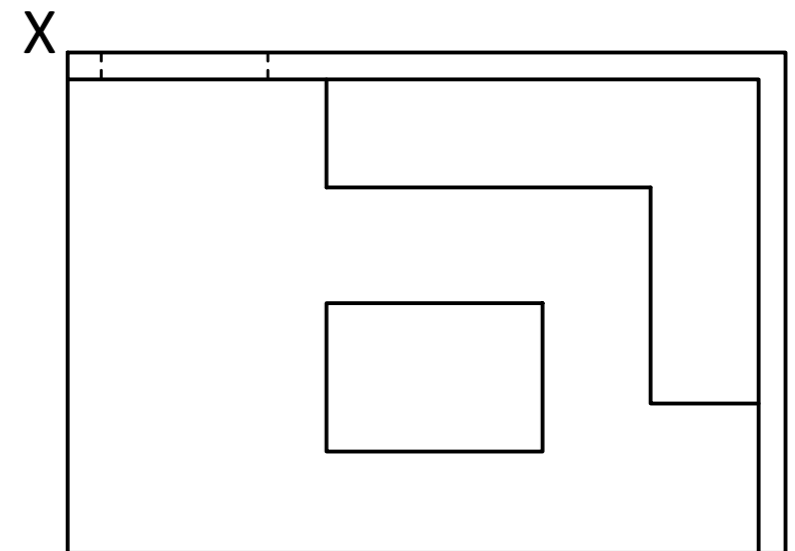
DRAW

a, The pictorial view of the room from the given start point.

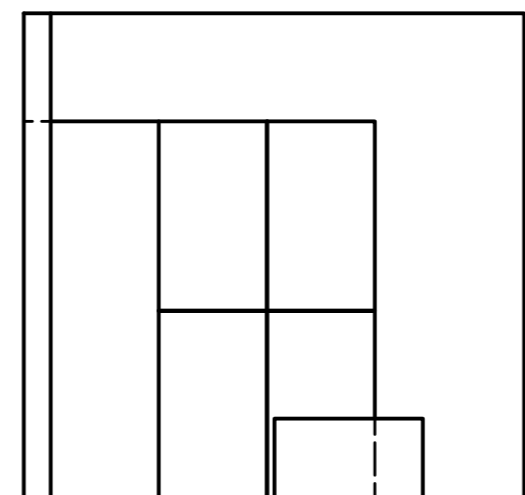
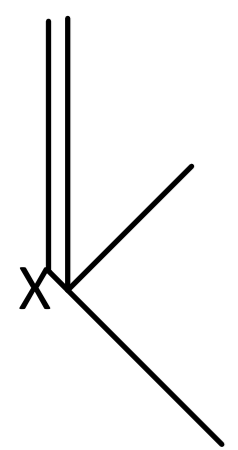


Pictorial view

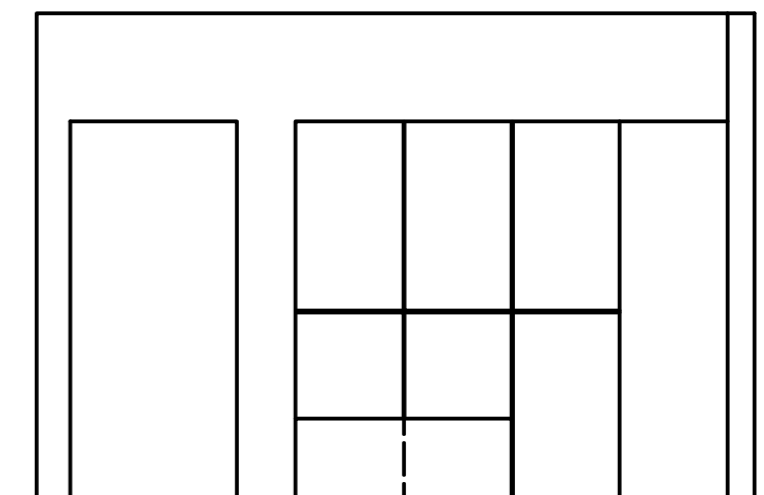
Area of Ability	Good	Ok	Improve
Use of construction lines			
Draught personship			
Visible outline shown			



PLAN



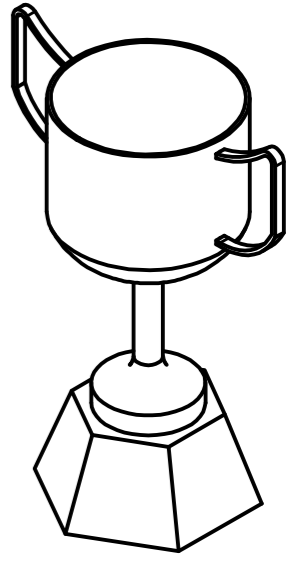
END ELEVATION



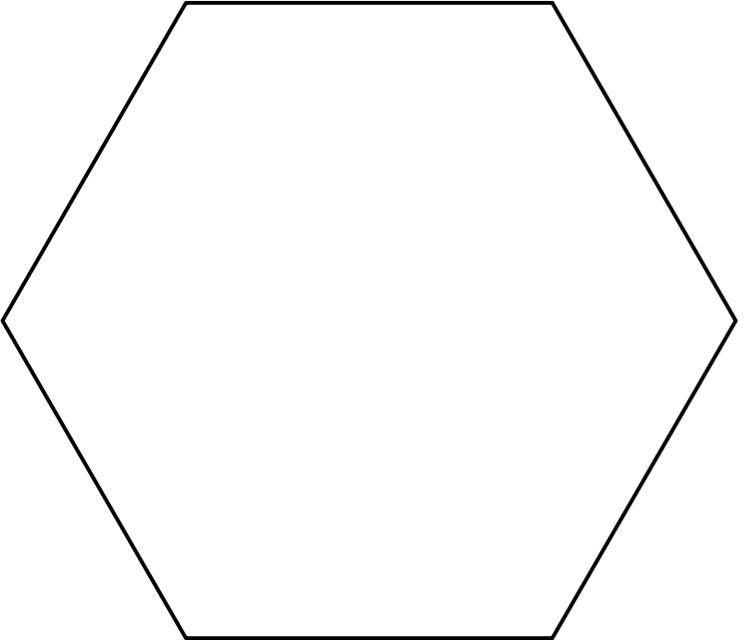
ELEVATION

The elevation and pictorial view of a Trophy are shown.
DRAW

- a, The completed plan view of the base part only
- b, The end elevation
- c, The surface development

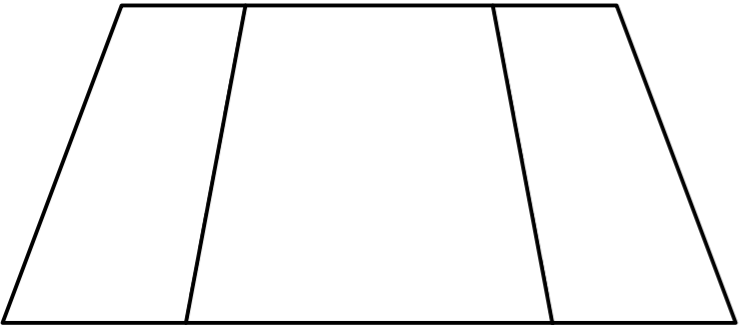
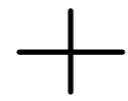


PICTORIAL VIEW



PLAN

SURFACE DEVELOPMENT

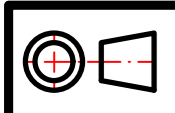


ELEVATION



END ELEVATION

Area of Ability	Good	Ok	Improve
Use of Construction lines			
Draught personship			
Correct use of bounce line			
Surface Development			



GOLF

PUTTING MACHINE

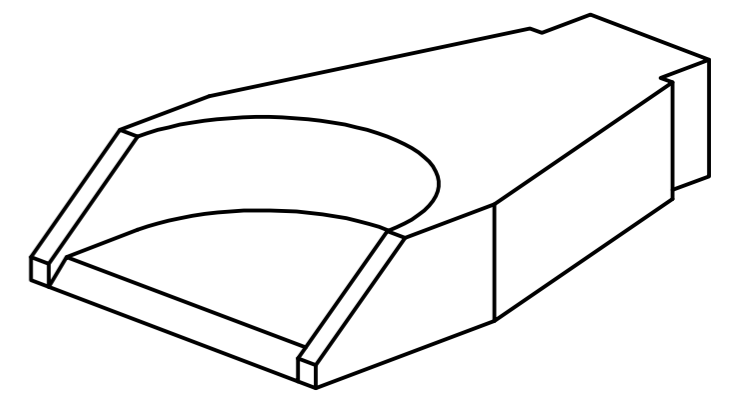
NAME



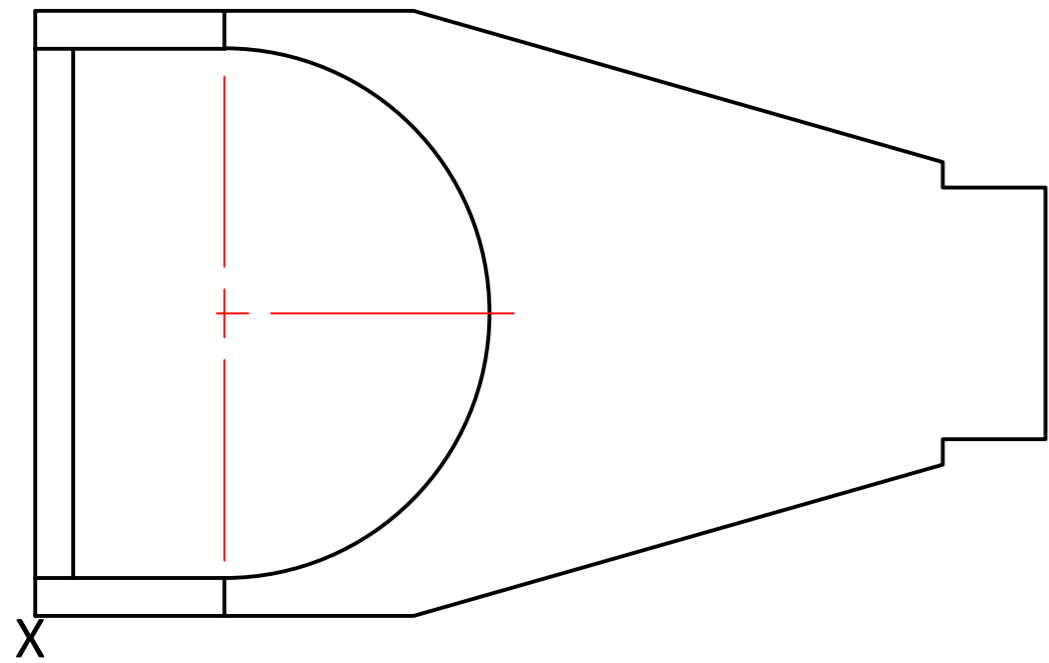
The elevation, plan and pictorial view of a putting machine are shown.

DRAW

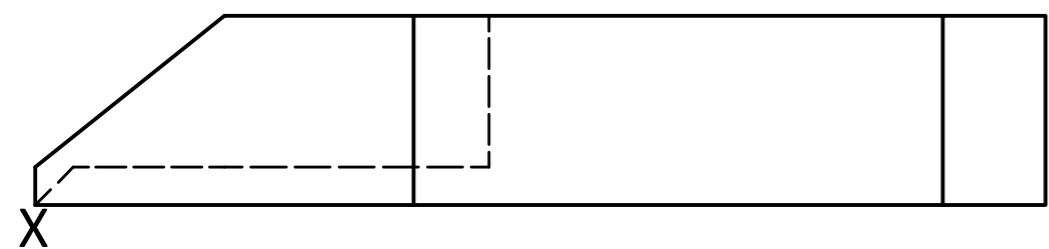
a, The isometric view of the machine from the given start point.



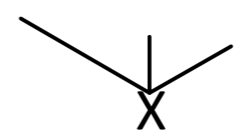
PICTORIAL VIEW



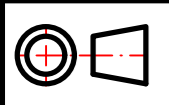
PLAN



ELEVATION

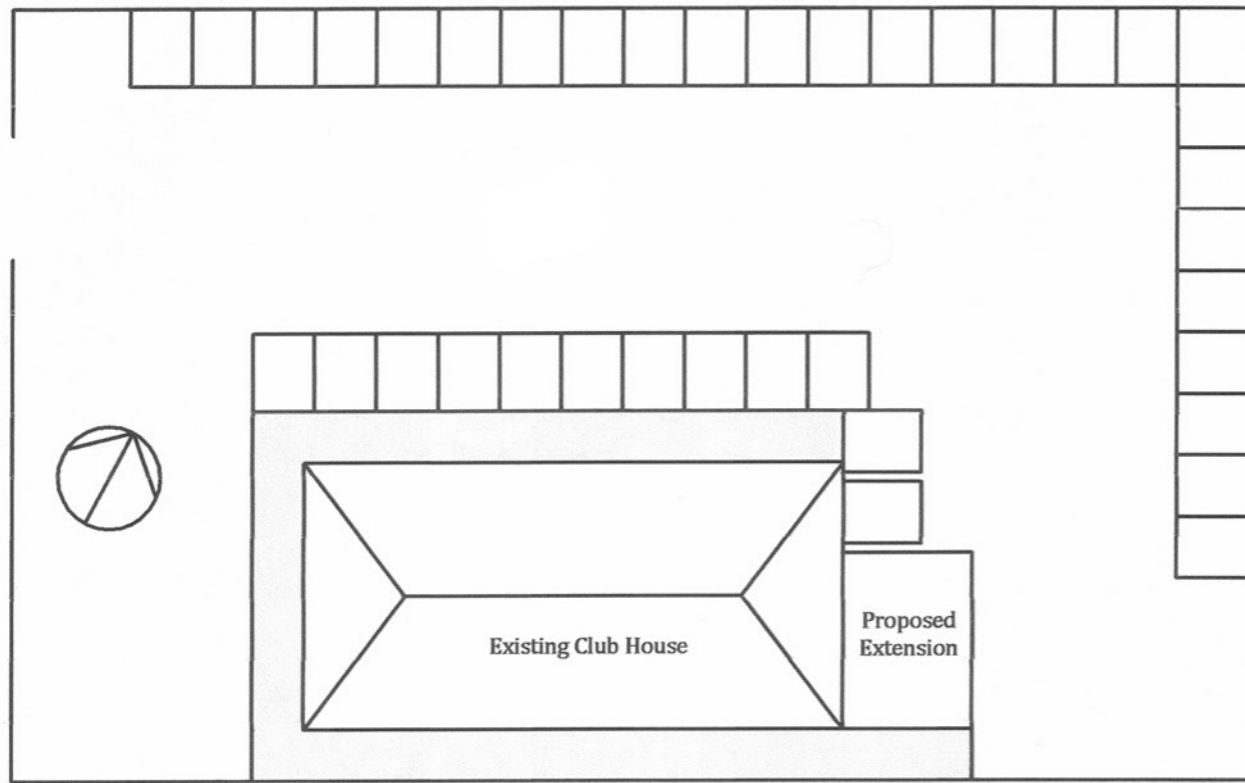


Area of Ability	Good	Ok	Improve
Use of Construction lines			
Accuracy of measurement			
Clock face method used			
Quality of Freehand curve			

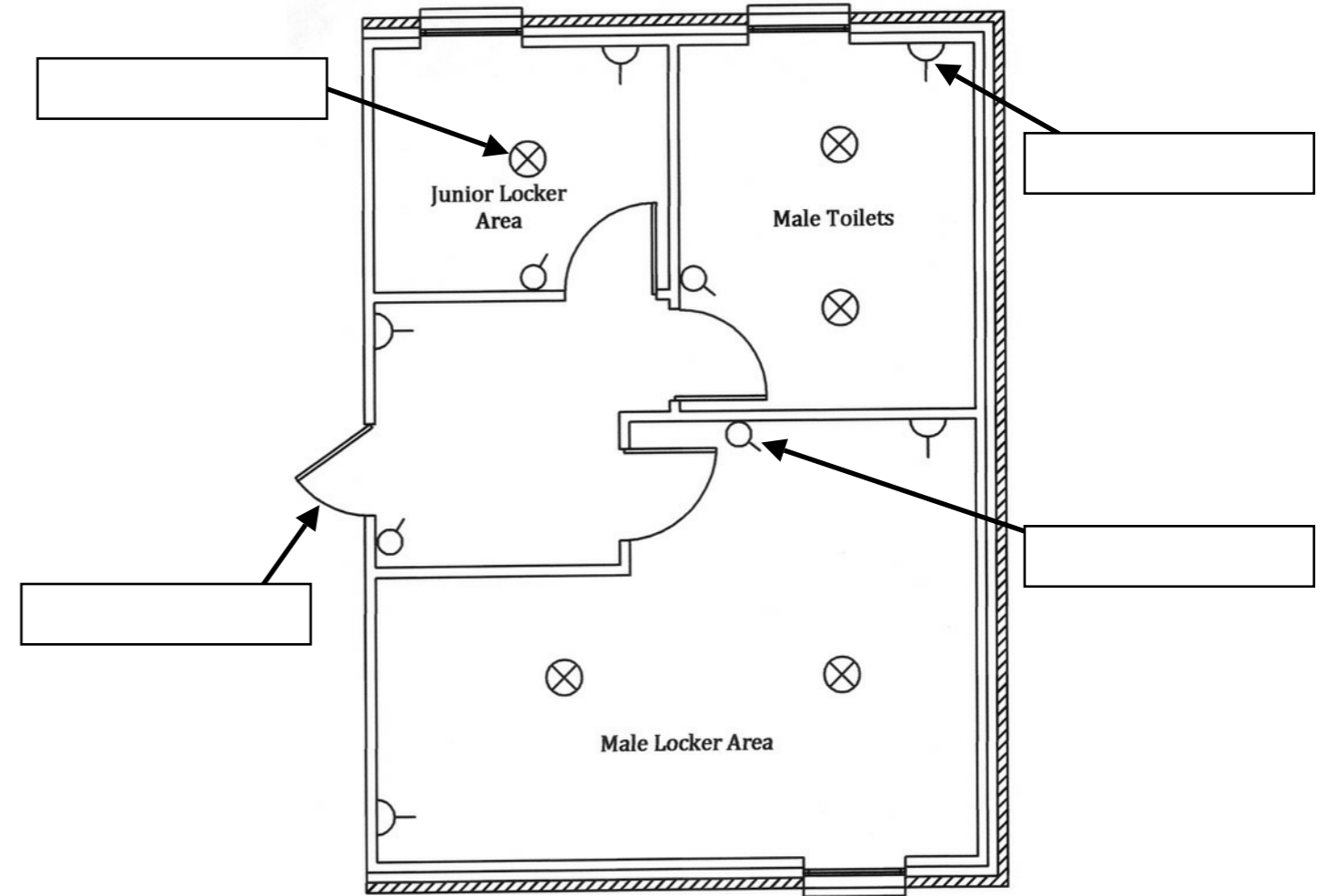


Anytown Golf Club are planning to extend their current club house. They need extra space to accommodate new locker areas and toilets for some of their members.

Identify the common architectural symbols below.



Site Plan



Floor Plan

Identify this symbol, which can be seen on the site plan for the club house.



A CAD package was used in the production of the architectural plans. Give two advantages that CAD software has over manual drawing methods.

- 1.
2.


All of the symbols above are stored in a CAD Library. State one advantage of using a CAD Library.

State a suitable scale that would be used when producing a Floor plan.

Anytown Golf Club use a Desktop Publishing package to produce their monthly newsletter. Identify the common DTP terms used within this layout.

The Golf Club also use a package to produce graphs and charts to display certain sales figures more clearly to members.

Anytown G.C.




News letter July 2014

Welcome to July's edition of our newsletter. As the hot summer weather is well and truly here, why not enjoy a refreshing meal in the newly refurbished restaurant area. For reservations book directly with the restaurant

Pro Shop

Sale now on!

- All golf bags 20% off for the month of July.
- Golf lessons available throughout the week, 3 lessons for the price of 2!



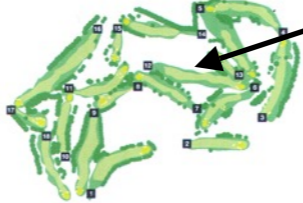
Titleist XC Stand Bag
Only £69.99

Captains Charity

This last year the charity has been "Wishes 4 Kids". These children have life threatening problems and other medical issues. The aim of the charity is to help them forget their problems for a short time by granting their wish and to give their family happy memories. This charity depends on people such as yourselves giving monies to enable these wishes to be fulfilled. On behalf of the Charity I would like to thank you for your tremendous support during the last year.

Course Map

Find our new course map available to download as an app from the apple store. Which is updated daily to give accurate tee and pin positions, as well as wind directions and speed.



Annual General Meeting

On the 28th May the well advertised club A.G.M. was held, but attended by only 38 members! This was very disappointing considering the number of members that have so much to say about the running of the club when in the club house. The meeting was chaired by the Captain who thanked all the members attending for there kind support and introduced other committee members who contributed very positively to the questions asked by the members present.

www.anytowngolfclub.co.uk Facebook: anytown-g.c.

	£
Restaurant	125,000
Pro Shop	46,000
Green Fees	9600
Function Hire	8600
Membership Fees	500,000
Others	12000

Month	£
January	2000
February	3000
March	3500
April	4600
May	5000
June	7800
July	8200
August	6200
September	4000
October	2800
November	2200
December	5600

State the best type of graph or chart to use when presenting **Sales figures** for the clubs Total Income.

Give one reason for using this type of graph or chart.

State the best type of graph or chart to use when presenting **Sales figures** for the Pro Shop.

Give one reason for using this type of graph or chart.
