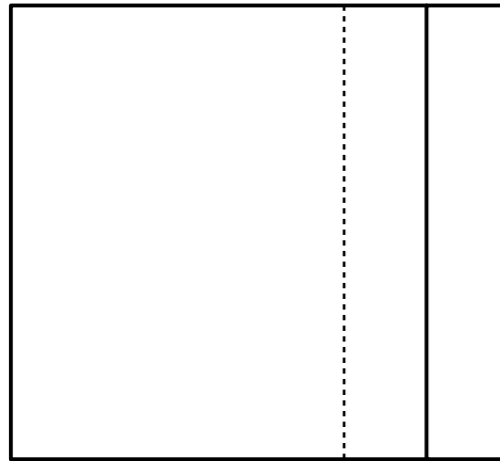


Blank box for name

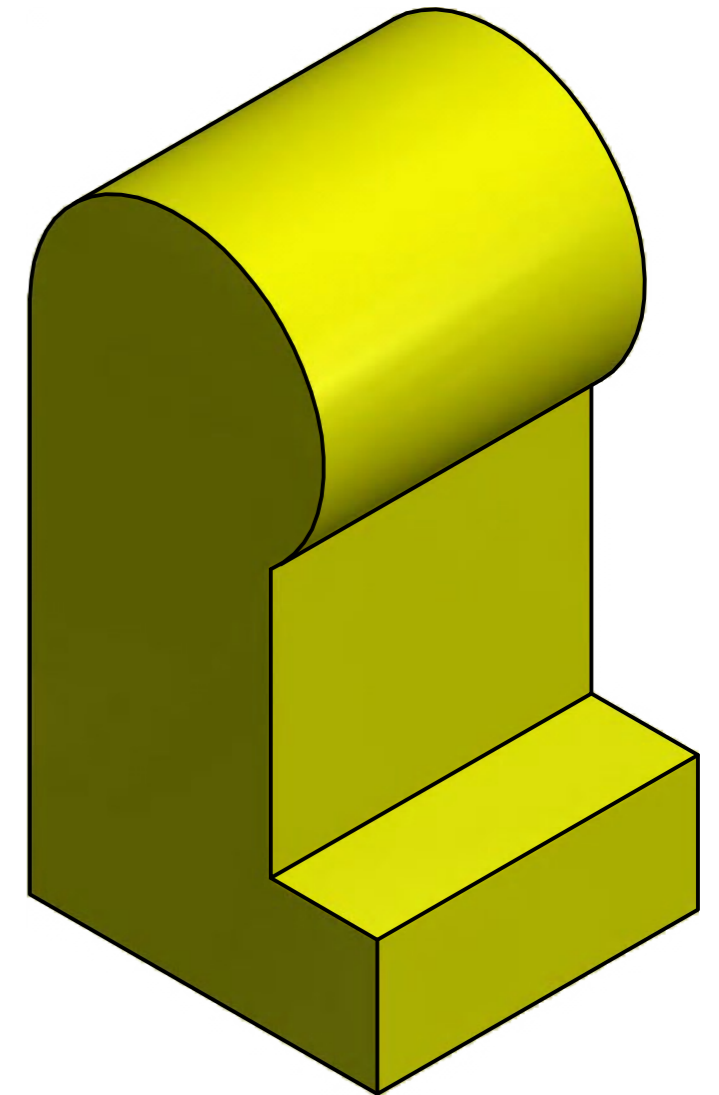


1. SKETCH THE ELEVATION FROM THE GIVEN VIEWS

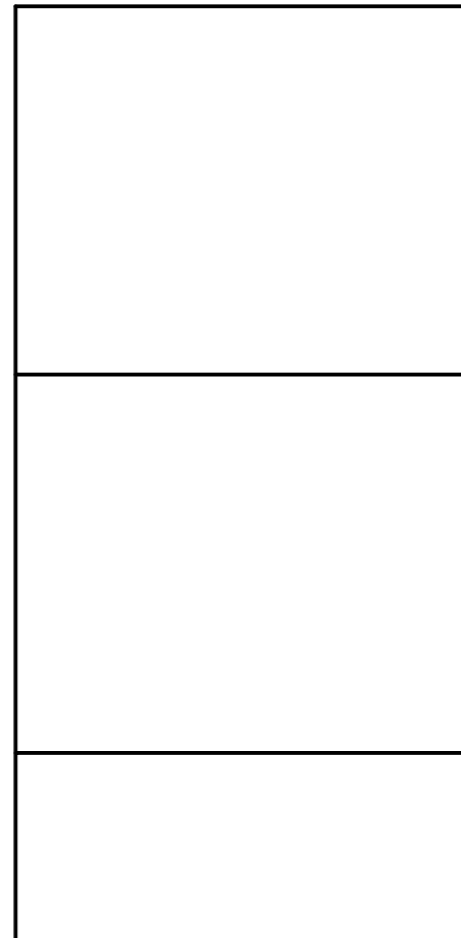


PLAN

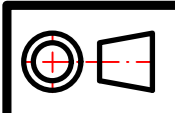
Manual Sketching			
Area of Ability	Good	Ok	Improve
Initial lines very light			
Lines drawn freehand			
Move paper to help draw straight lines			
Visible outlines made heavy			
Comment			



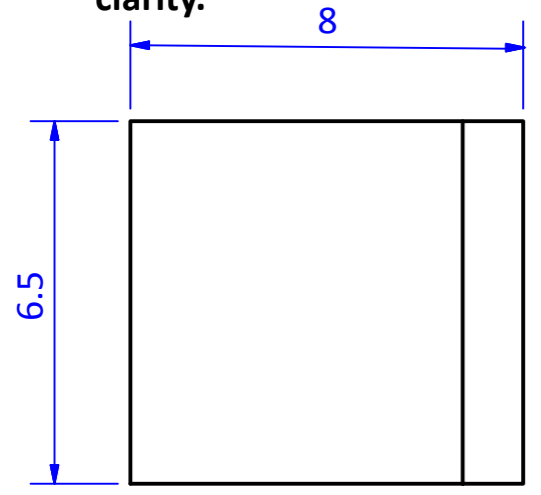
ELEVATION



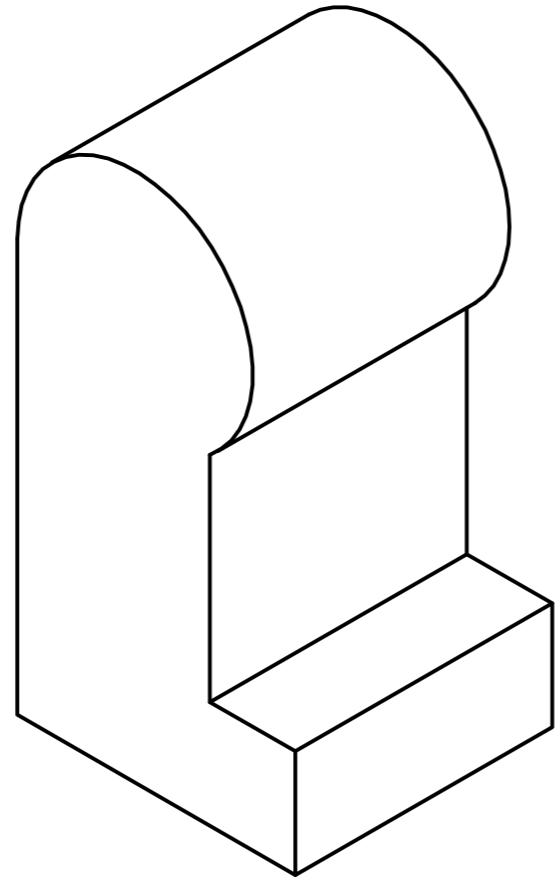
END ELEVATION



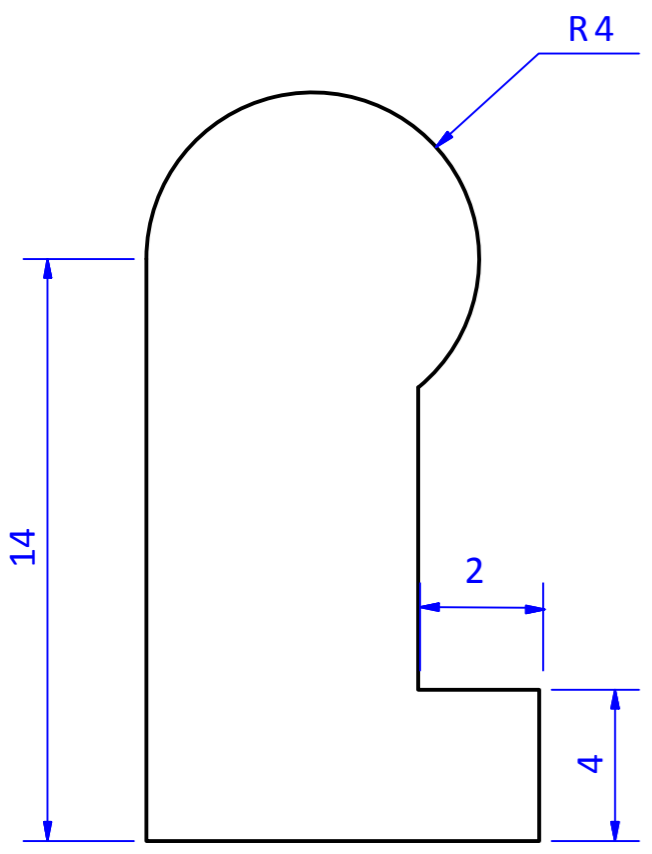
NOTE: WALL THICKNESS IS 1mm.
Hidden detail omitted for clarity.



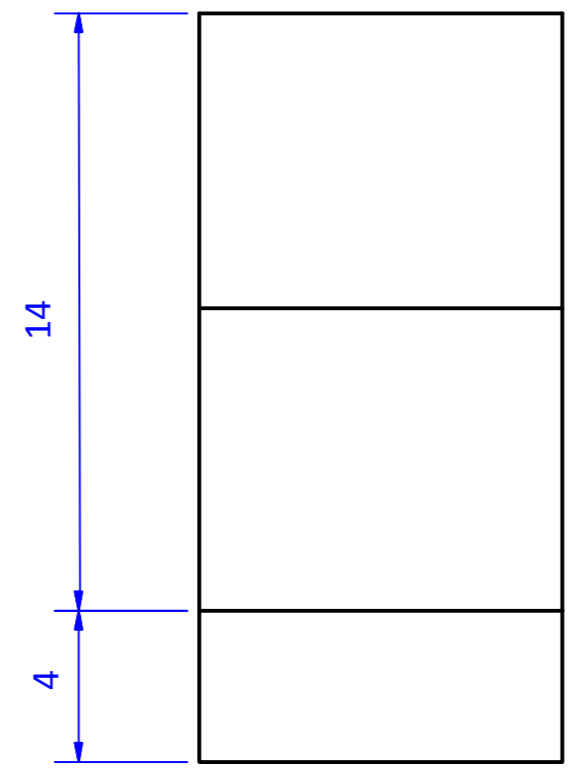
PLAN



ISOMETRIC



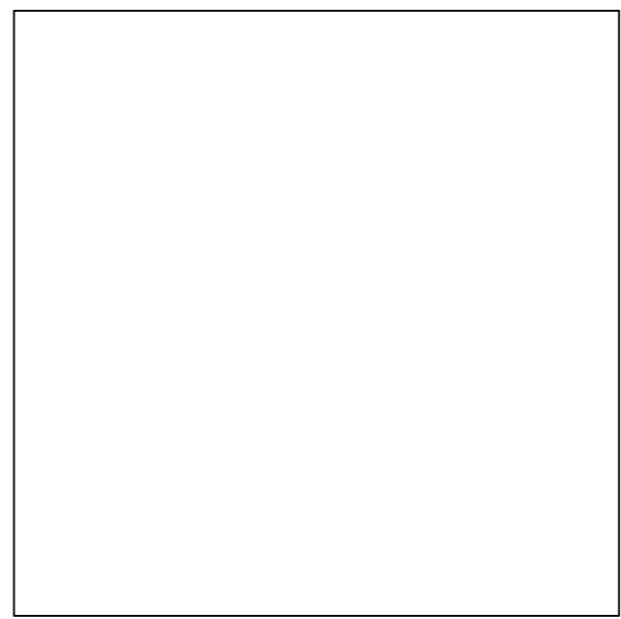
ELEVATION
SCALE 4:1



END ELEVATION

- Using the drawing shown, please identify the following sizes.
 - Overall Height
 - Overall Width
 - Overall Thickness

- Using the box below please sketch the profile that you would use to create the LEGO leg



- List which CAD commands you could use to **DRAW** the sketch

-
-
-
-

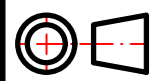
- List which CAD commands would you use to **EDIT** the sketch

-
-
-
-

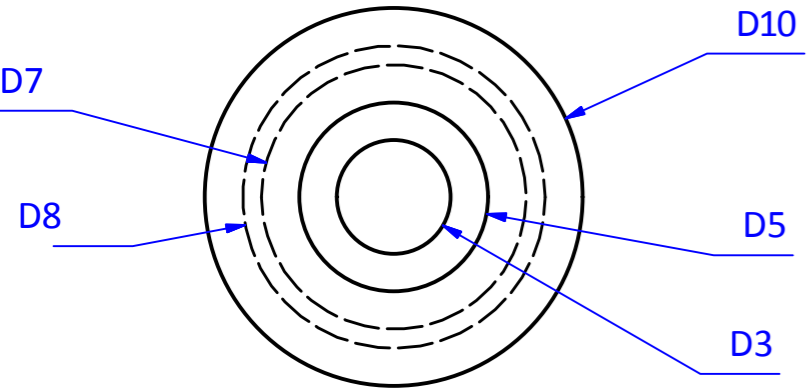
- Name **two** CAD features that could create the hollow part from a single sketched profile.

-
-

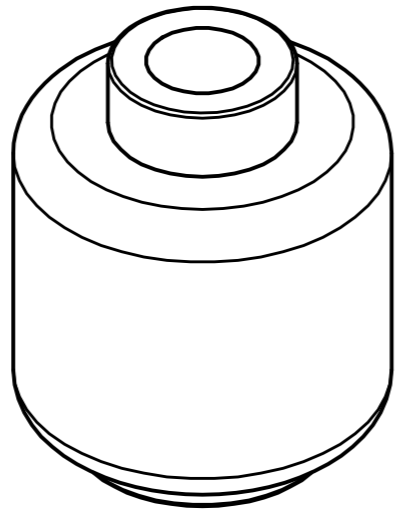
- Using CAD Software create the component from the given sizes. Add a 2mm hole in the centre of the circle on the right hand face.



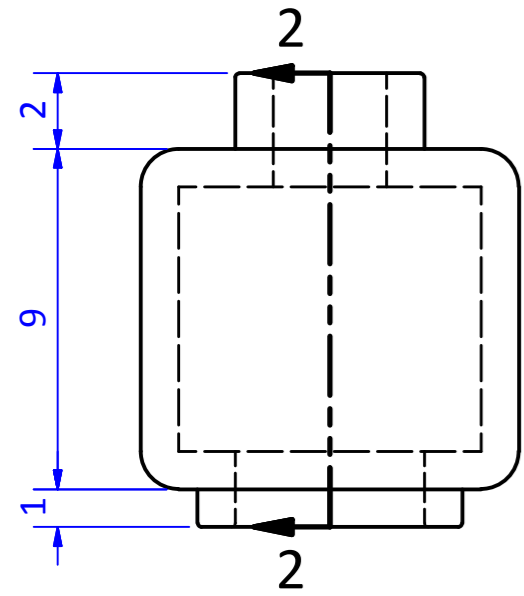
1. There are Linetypes missing from PLAN and END ELEVATION please sketch them in.
2. Please identify the correct Sectional END ELEVATION and tick the appropriate box.
3. Sketch the steps involved in producing the B R I C K part in as CAD model using the boxes provided.
4. Using the orthographic drawing and you CAD plan produced the CAD model of the component.



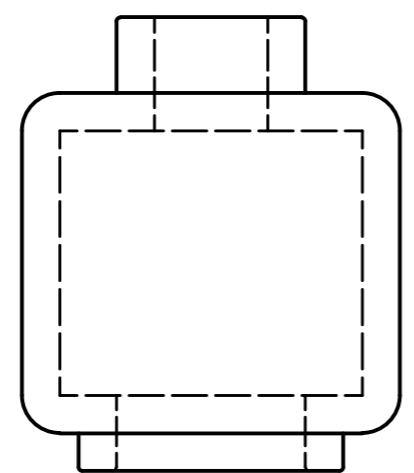
PLAN



ISOMETRIC



ELEVATION
SCALE 5 : 1



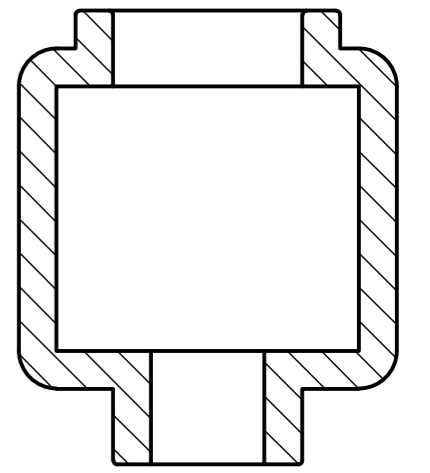
END ELEVATION

1.

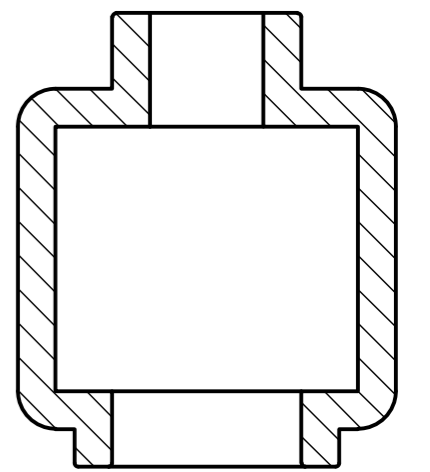
2.

3.

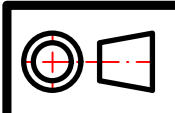
4.



SECTION 1-1
SCALE 5 : 1



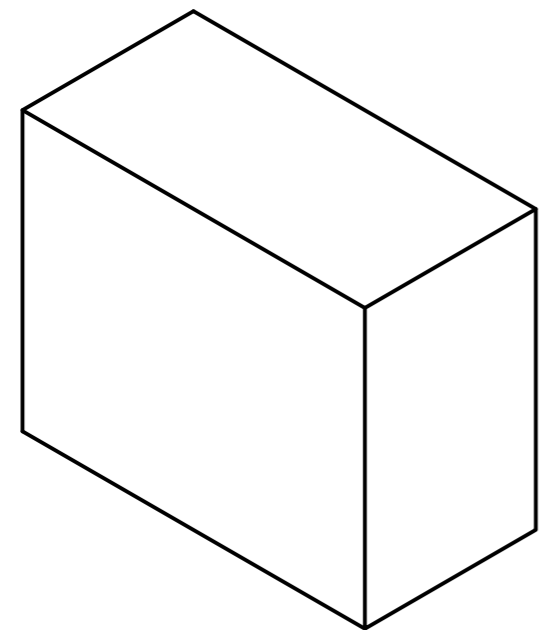
SECTION 2-2
SCALE 5 : 1



Blank space for name



Diagram 1



1. (a) Please Name the feature used to create the effect from item 1 to item 2.

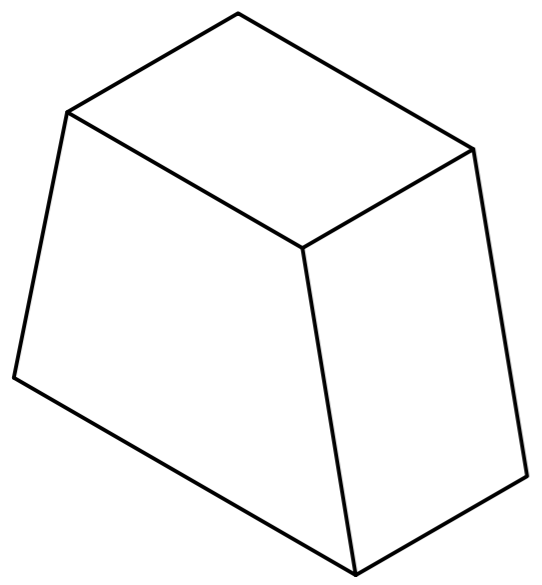
.....

(b) Using the orthographic drawing could you identify the two key dimensions to produce this feature.

Dimension 1

Dimension 2

Diagram 2



2. Could you name the feature that was used to create the item seen on diagram 3 and describe how you would produce this feature with the aid of sketches.

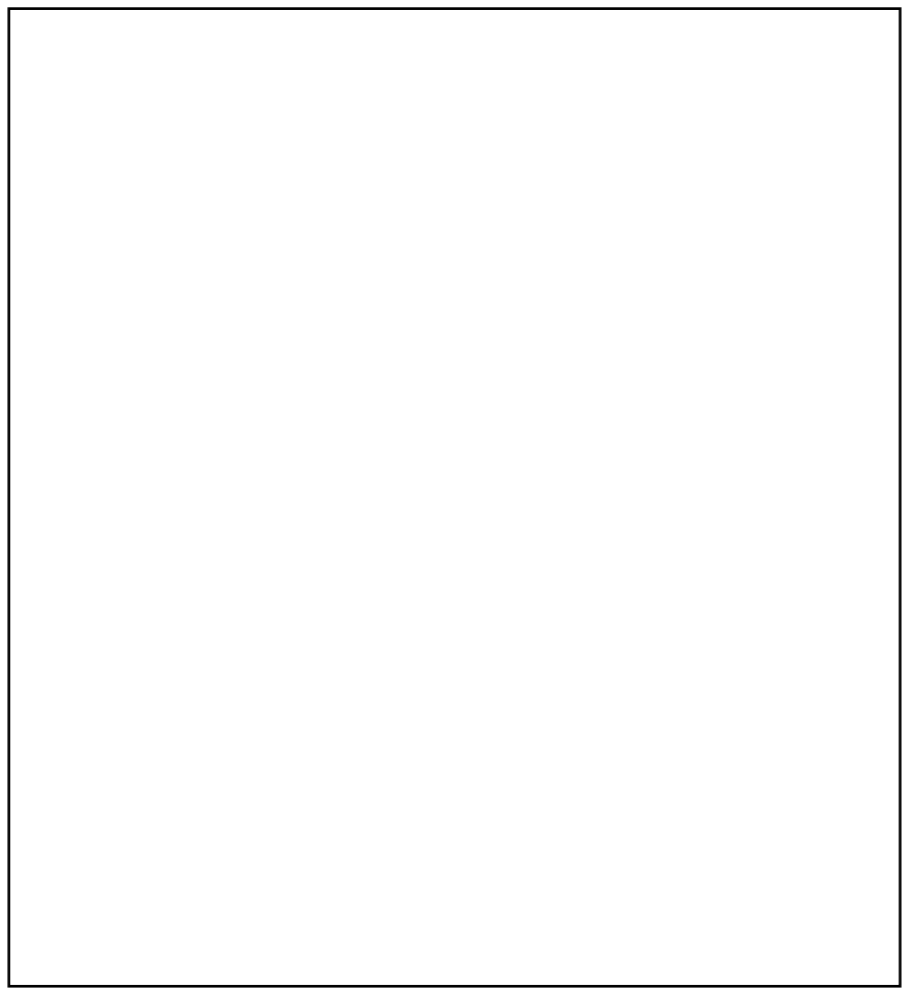
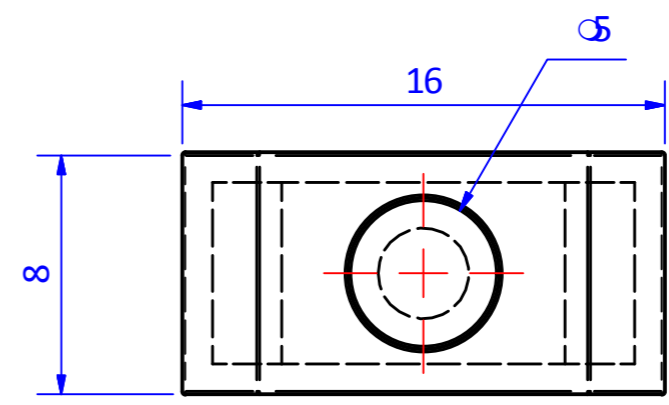
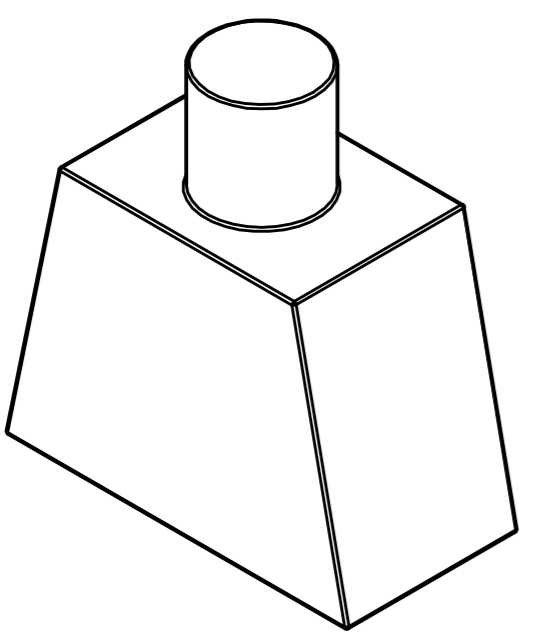
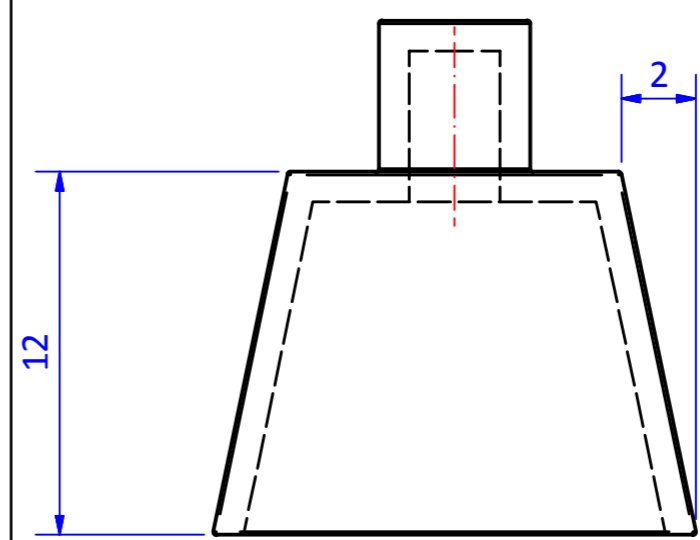


Diagram 3

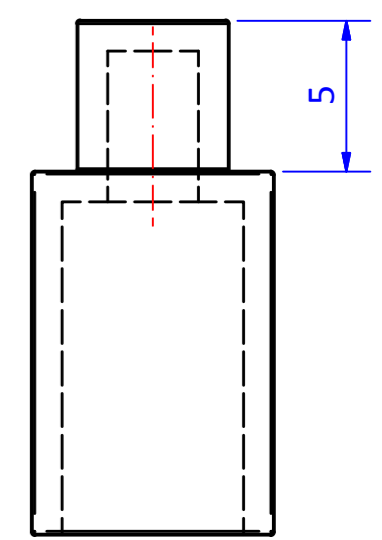


PLAN

NOTE: WALL THICKNESS 1mm

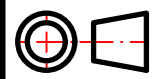


ELEVATION

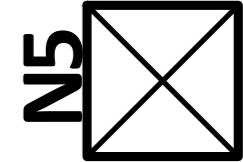


END ELEVATION

3. Now produce the CAD component using the orthographic drawing.



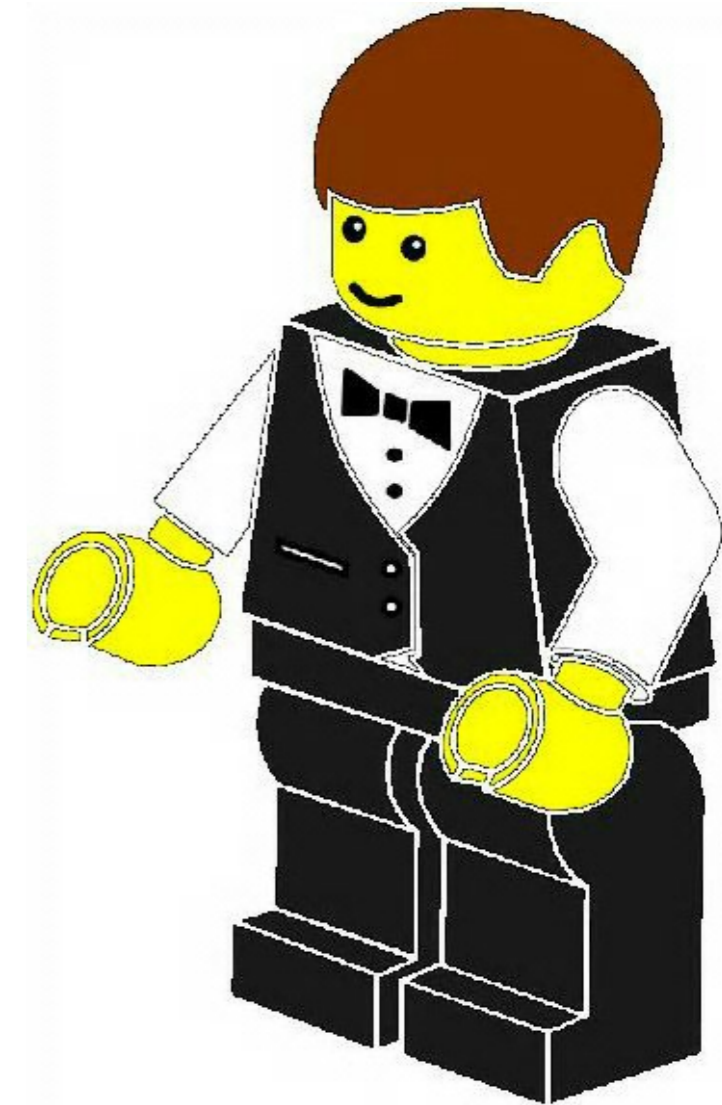
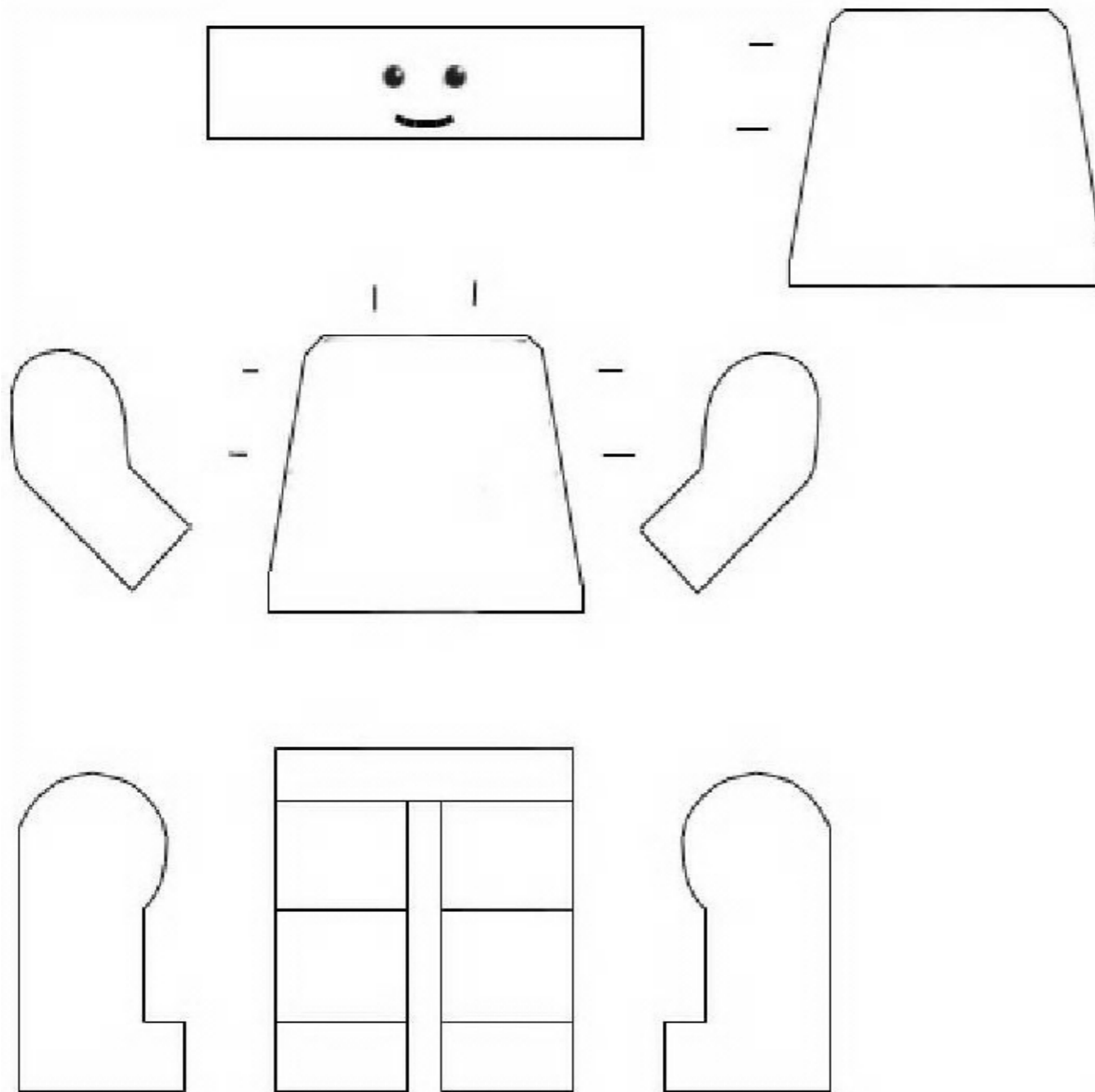
Blank space for name



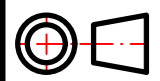
TASK 1:
CREATE A LIST OF POPULAR THEMES FOR THE POPULAR BUILDING BRICK PEOPLE

TASK 2:
USE THIS LIST TO TAKE A SURVEY OF YOUR CLASSMATES AND CREATE A CHART SHOWING THE MOST POPULAR ONES.

TASK 3:
BASED ON THE RESULTS OF YOUR SURVEY YOU WILL NOW CUSTOMISE YOUR BUILDING BRICK PERSON USING MANUAL GRAPHIC PRESENTATION TECHNIQUES.



EXAMPLE- A WAITER



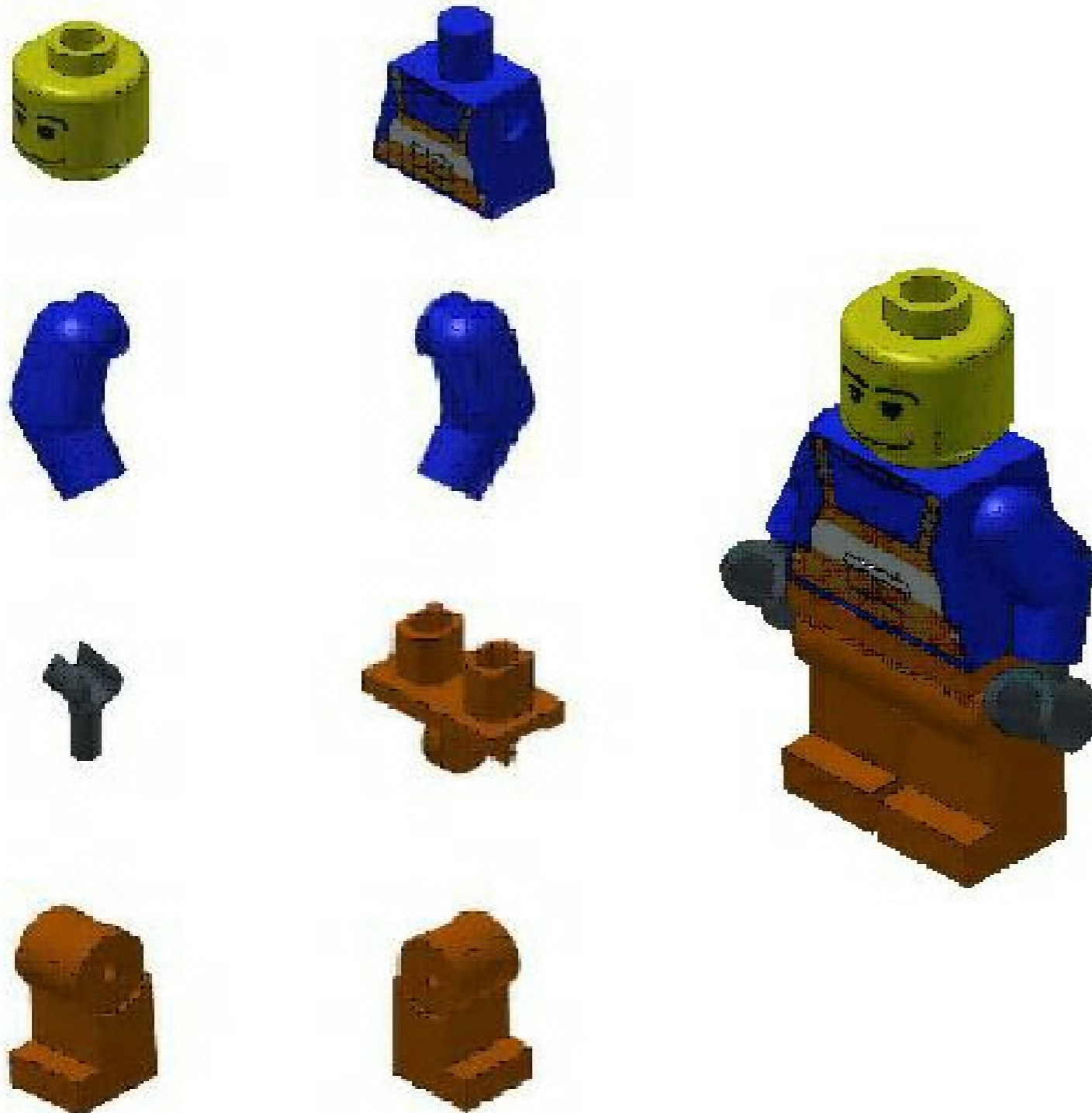
Blank space for name



TASK 1:
USING CAD ASSEMBLE THE FOLLOWING COMPONENTS THAT YOU HAVE CREATED AND THE ADDITIONAL ONES GIVEN TO YOU BY YOUR TEACHER TO A FULL BRICK PERSON AND THENCUSTOMISE IT BASED ON THE TASK BEFORE.

TASK 2:
NOW CREATE IMAGES FOR THE USE IN AN INFORMATION LEAFLET SHOWING THE INDIVIDUAL PARTS AND INCLUDING THE EXPLODED AND ASSEMBLED VERSION.

TASK 3:
FINALLY CREATE IMAGES FOR A SEQUENCE OF OPERATIONS OF THE INDIVIDUAL ASSEMBLY OPERATIONS THAT WOULD COMPLETE A FULL LEGO PERSON.



INSTRUCTIONS OF HOW TO CONSTRUCT A LEGO MAN



INSTRUCTIONS OF HOW TO CONSTRUCT A LEGO MAN

