

Curriculum Newsletter

Primary 2b

Term 3
Spring 2026

Schools across Scotland follow the *Curriculum for Excellence*, which is divided into eight broad curriculum areas.

The curriculum is divided in to different levels →

Pupils in Nursery and P1 generally work within the *Early* level

Pupils in P2, P3 and P4 generally work within the *First* level

Pupils in P5, P6 and P7 generally work within the *Second* level

Literacy and English

The class will be reading:

Individual Books

PM Guided Reading texts across various levels

Our **Reading** focus will be:

Comprehension

Identifying fact or opinion

Sharing likes and dislikes

Finding information

The genre(s) for our **Writing** focus will be:

Persuasive

Explanation

We will be looking at features including:

Conjunctions

Vocabulary (uplevelling)

Verbs

Alphabetical order

Presentation

Sequencing

In **Listening and Talking**, we will be developing:

Retelling stories or events

Sharing ideas

Pace and tone

Answering questions

Numeracy and Mathematics

Our work in **Numeracy** will include:

Fractions

Estimating

Measure (capacity/volume)

Division

Our work in **Mathematics** will include:

Multiples

Grid references

Direction

Patterns (numbers)

Health and Wellbeing

In **PE**, we will be developing our skills in:

General fitness

Co-ordination

Our PE days are: Tuesday and Thursday

PATHS is our main programme for delivering **HWB**.

Relationships, Sexual Health & Parenthood is taught through RSHP.

Other aspects of **HWB** we will look at this term include:

World of work Keeping ourselv Resilience

Other Useful Information

Wallacewell Primary School Website - <https://blogs.glowscotland.org.uk/gc/wallacewellprimary/>

Expressive Arts

The **Expressive Arts** are woven across the curriculum.

Art and design

History and appreciation

Weaving

Scottish country

Dance

Drama

No drama this term

No drama this term

Music

Singing (seasonal)

Music appreciation

Religious and Moral Education

This term, we will be learning about the following:

Islam

Ramadan

Hinduism

Christianity

Easter

A range of religious and cultural events are discussed at our weekly assemblies. We use these opportunities to reflect on our values, and celebrate the diversity of our community.

Science / Social Subjects

Our interdisciplinary learning (**IDL**) theme for this term is:

Scotland, The Natural World and People who help us.

We will be studying:

Children will learn about Scotland by looking at landscapes across the country and historical figures such as William Wallace. The children will look at the natural world from prehistoric creatures to modern plants and animals. They will learn about animal adaptations and habitats and how we can protect the world around us. Our People Who Help us topic will cover the different people who help us including the NHS.

Technologies

Technology is embedded across the curriculum, but we will be developing specific skills and knowledge in:

Research

Collaboration

Use of iPad

Evolution of technology

You can learn more about teaching and learning at Wallacewell on our website. On our website you can also keep up to day with in class learning.

Wallacewell Primary Family Learning - <https://blogs.glowscotland.org.uk/gc/familylearningatwallacewellps/>

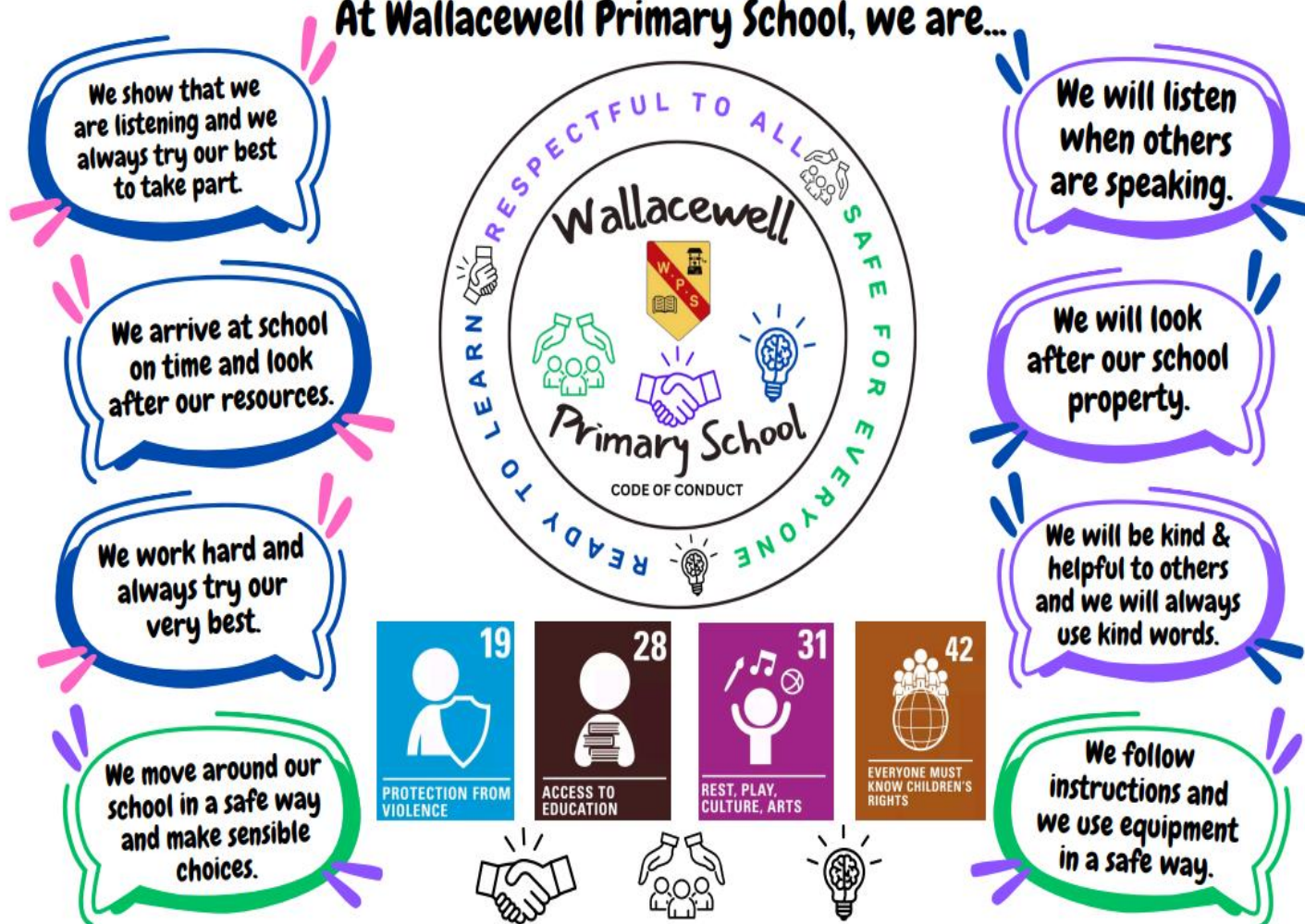
Relationships, Sexual Health and Parenthood - <https://rshp.scot/>

*Wallacewell Primary operates a cashless system for school meals and extra curricular activities/events.
Please ensure you download Parent Pay to order and, where applicable, pay your child's school meals.
Parent Pay is also used to pay for extra curricular events such as discos and other educational experiences.*

Our Whole School Charter is used across the school and has been co-created and agreed by pupils and staff.
We encourage families to reinforce our Charter and Code of Conduct (Ready, Respectful, Safe) at home.

WHOLE SCHOOL CHARTER

At Wallacewell Primary School, we are...



Our School Values:



Further information about our vision, values and aims can be found here - <https://blogs.glowscotland.org.uk/gc/wallacewellprimary/our-school-2/>