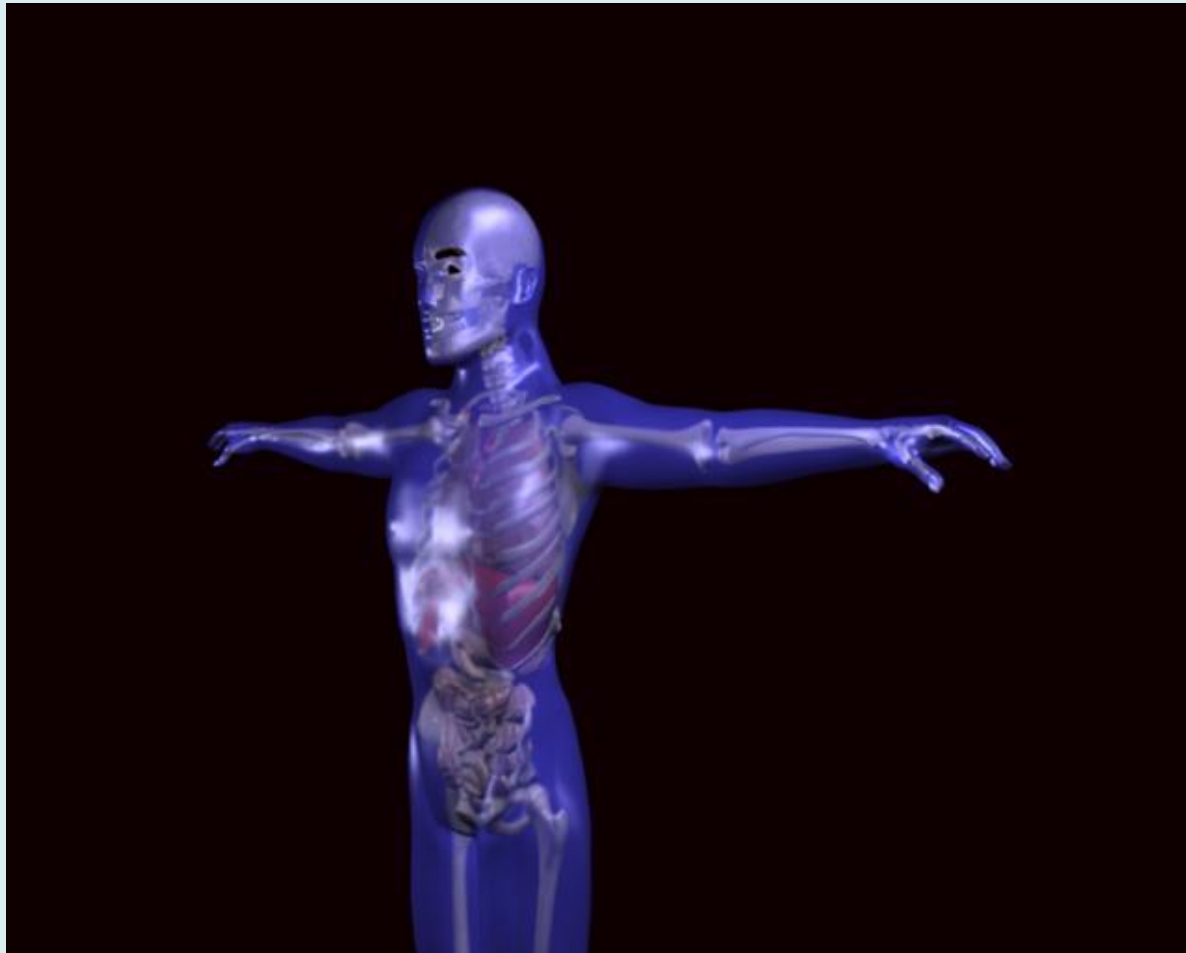


Organ Systems



Lesson 19

Learning Intention



Screening for Health Problems

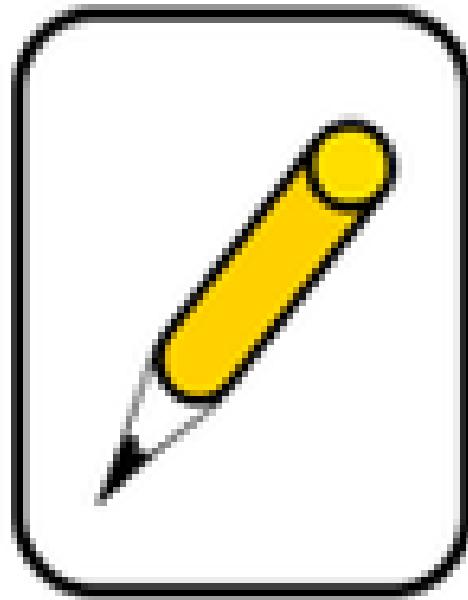
Success Criteria



If this is a successful lesson you should be able to:

- Give an example of a health condition that is screened for
- Explain how this health condition affects individuals who have it
- Explain what is involved in the screening process for the condition

Thinking Skills



Applying



Screening

Activity 17

Screening is a way of identifying healthy people who may have an increased risk of a particular condition.

- You task will be to research a health condition that is screened for.
- You will work on your own.
- You will present your findings on an A4 sheet of paper - word document.
- Everything must be stored in the drop box
- You will have 30 minutes

Your Task

You will be given a health conditions that you have to research.

Find out about the condition, for example:

1. What causes the condition?
2. What are the symptoms of the condition?
3. What is involved in screening for the condition?

Health Condition



Note the Health Condition
you have to find
information on.

Number 1s - Bowel Cancer

Number 2s - Macular degeneration

Number 3s - Diabetes

Number 4s - Iron deficiency
anaemia

What you need to know



This is the information we need:

1. What causes the condition?
2. What are the symptoms of the condition?
3. What is involved in screening for the condition?

Success Criteria

If this is a successful lesson you should be able to:

- Give an example of a health condition that is screened for
- Explain how this health condition affects individuals who have it
- Explain what is involved in the screening process for the condition

