

Supporting Improvement: Standards and Quality Report



The summary report is provided for parents/careers and partners to outline our achievements this session and our priorities for next session. Throughout this session we have taken forward our priorities as detailed in our school improvement plan. Through our processes of self-evaluation, we have identified how we can improve outcomes for our children and young people.

Our achievements and improvements this year.

We would like to highlight the following improvements/achievements:

Our Vision, Values, and Aims

At Merrylee Primary School, our vision, values, and aims have been carefully developed in consultation with parents, staff, and pupils to reflect our unique context. They are shaped by our deep understanding of the social, economic, and cultural context of our pupils and their families. Our core values, which guide us daily, are:

- Making Friends
- Eco-Friendly
- Responsible
- Respect
- Yes We Can!
- Learning Outdoors
- Enjoy a Healthy Lifestyle
- Exciting Opportunities

These values are embedded in practice through the four contexts for learning. We use a range of strategies to ensure that our values are visible and integral to everything we do in school.

Parental Engagement

Parental engagement is a significant strength at Merrylee. Parents have regular opportunities to support school improvement through various activities, including participation in the Parent Council, Parent Association, and informal school events. This partnership ensures a strong sense of community and shared goals.

Key Strengths

We are proud of several key areas of strength

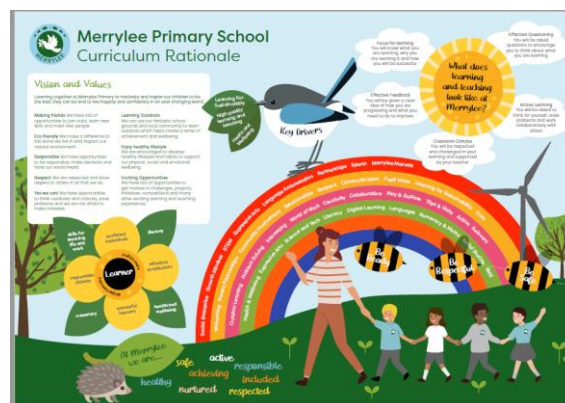
- **Interdisciplinary Learning** We offer rich opportunities for interdisciplinary learning, including outdoor learning, STEM education, and IDL.
- **Real-Life Learning** Our curriculum is linked meaningfully to real-life experiences, helping pupils to see the relevance of their learning.
- **Pupil Contribution and Leadership:** Our pupils actively contribute to the ethos of the school through various committees and leadership roles, enhancing the school community.
- **Celebrating Achievement** Personal achievements are regularly recognised, such as through our Merrylee Marvel awards, which are presented at assemblies and aligned with our values and the four capacities.
- **Residential experiences** at P6 and P7 provide challenging and exciting contexts to enhance our outdoor learning curriculum.

Learning and Teaching

Our approaches to planning are informed by our vision, values, and Curriculum Rationale. This includes using interdisciplinary learning contexts, outdoor learning, and a growth mindset. All classes benefit from regular outdoor learning, including a dedicated weekly outdoor learning day.

Staff Development

- Staff work collaboratively to plan high-quality learning experiences for our pupils.
- We continue to focus on developing our pedagogy in teaching reading using the Balanced Reader approach.
- Professional learning has supported staff in enhancing their digital skills, with P5-7 teachers using Showbie effectively as a digital learning platform.
- Early level practitioners have strengthened their approaches to learning through play, sharing their expertise with colleagues across the city.



Ethos and Culture

The ethos of Merrylee reflects our commitment to children's rights and positive relationships. We have achieved the Silver Award for Rights Respecting Schools and are working toward the Gold Award. The UNCRC is a core element of our school life, with regular references in weekly staff communications and class charters.

Pupil Leadership and Involvement

Overall, learners are successful, confident, exercise responsibility and contribute to the life of the school and wider community as global citizens. There are many opportunities for pupils to be involved in leadership roles through a variety of committees. Committees have enjoyed a high level of success in various initiatives raising the school profile and developing individual skills and attributes. Examples include:

- **Digital Leaders Group** organised and implemented a successful Digi-Day, showcasing digital learning across the school.
- **Diversity Squad** presented new reading resources to classes, promoting inclusion and cultural awareness.
- **Assembly Programme** Pupils regularly present assemblies on a wide range of cross-cutting themes, including Ramadan, Eco initiatives, Fairtrade, and anti-bullying.
- **Pupil-Led Clubs** P5 and P6 pupils take the lead in organising dance and sports clubs for younger pupils (P1-4).
- **Sports Committee** organised and implemented a successful whole school fun run at Newlands Park including a pupil led warm up.
- **Pupil Voice** representatives regularly attend citywide Pupil Forums to discuss issues that affect them.

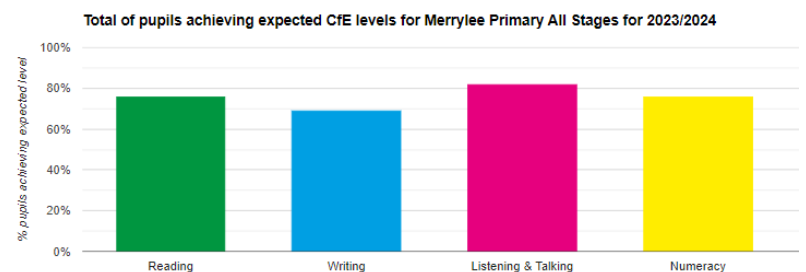
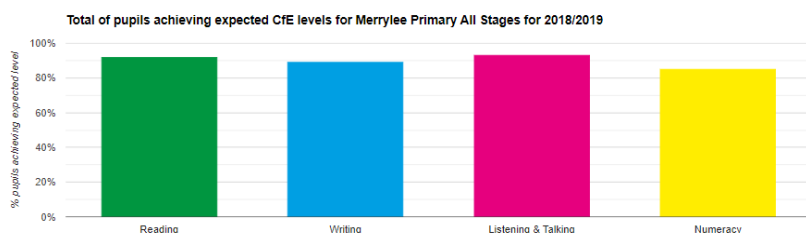
These opportunities help develop leadership skills, confidence, and a sense of responsibility in our pupils.

At Merrylee, there is a strong focus on **physical activity** and **health and wellbeing**. The school offers a diverse programme of extra-curricular activities, promoting both mental and physical health. We have strong links and partnerships with local community groups including Newlands and Langside Tennis clubs. Our football clubs are very well attended and participate in a number of local tournaments. The Merrylee Dance group were successful in getting through to the Determined to Dance finals at the Glasgow Royal Concert Hall. Bikeability Levels 1 and 2 are delivered to our P5-P7 pupils.

At Merrylee Primary School, we are committed to ensuring that every child reaches their full potential. Here is an update on our recent attainment data and key areas of focus.

Attainment in Literacy and Numeracy

- Attainment Data shows that most pupils are attaining appropriate levels in both numeracy and literacy, with a few exceeding these levels.
- Teachers are making confident professional judgments, supported by a wide range of assessments.
- Merrylee continues to attain well to comparative schools across the city. However, we have yet to return fully to our pre-COVID attainment levels, especially in literacy.



Early Interventions and Transition Programmes

- Early intervention initiatives have been highly effective in providing targeted support to individuals and groups of children. This includes the successful reading recovery intervention introduced at Primary 2, which has supported improvements in reading for selected pupils.
- Nursery to Primary Transitions have been effective, with positive feedback from parents about how well children are adapting to their new school environment.
- Our Primary 7 transition programme continues to prepare pupils well for the move to secondary school, ensuring they are ready for the next stage of their learning journey.

We remain focused on improving literacy attainment and will continue to implement strategies that support pupils' academic growth. We are grateful for the ongoing support from parents as we work together to ensure our children's success.

Here is what we plan to improve next year.

Following self-evaluation, our school improvement plan will focus on the following for session 2024-25:

Priorities for development:

1. Improve levels of achievement and rates of progress in Literacy
Improve pedagogy of differentiation across all classes leading to improved attainment in reading
2. Increase levels of Engagement, Participation & Inclusion
Develop a whole school approach to restorative practice

How can you find out more information about our school?

Please contact us directly if you require further information or if you wish to comment on the report.

The contact e-mail address is: headteacher@merrylee-pri.glasgow.sch.uk

Our telephone number is: 0141 637 6798

Our school address is: 50 Friarton Road, Glasgow G43 2PR

Further information is available in: parent newsletters, the school website, and the school handbook