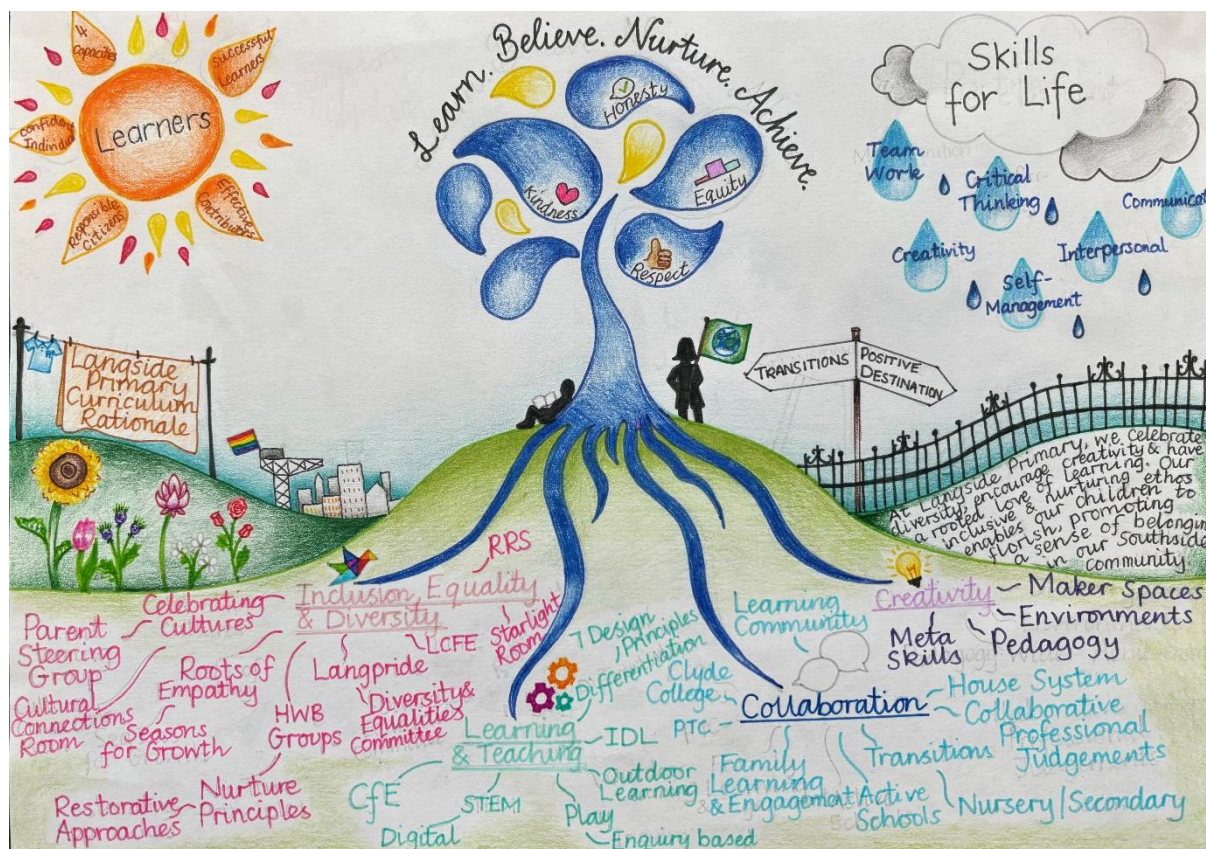




Langside Primary School



Curriculum Rationale



Introduction

Our curriculum rationale is designed to reflect the unique context of Langside Primary School, characterised by a diverse population and rich cultural heritage. We aim to create a holistic educational experience that promotes academic excellence alongside personal, social, and emotional development. Central to our approach are play pedagogy, inquiry-based learning, metacognition, and a commitment to meeting learners' needs, all while upholding the principles of the United Nations Convention on the Rights of the Child (UNCRC). Together, these elements foster creativity, curiosity, and critical thinking in our learners.

Alignment with National & Local Policy

Our curriculum is aligned with the principles of Curriculum for Excellence (CfE), ensuring we meet national educational standards while adapting to the specific needs of our community. By focusing on the four capacities of successful learners, confident individuals, responsible citizens, and effective contributors, we provide a well-rounded educational experience that prepares our children for the complexities of the modern world.

Meeting Learners' Needs

We recognise that each learner has unique strengths, interests, and challenges. Our curriculum is designed to be flexible and responsive, accommodating different learning styles and paces. Through differentiated instruction, targeted interventions, and personalised learning plans, we ensure that every child receives the support they need to succeed. By fostering an inclusive environment, we celebrate diversity and promote equity, enabling all children to engage fully in their learning journey.

Play Pedagogy

Recognising the vital role of play in children's development, our curriculum integrates play pedagogy as a foundational approach to learning. Through structured and unstructured play, students explore concepts, develop problem-solving skills, and enhance their social interactions. Play-based learning fosters creativity and imagination, allowing children to engage with their environment in meaningful ways. By creating a playful and engaging learning atmosphere, we support children's natural curiosity and encourage a lifelong love of learning.

Inquiry-Based Learning

Inquiry-based learning is another cornerstone of our curriculum, promoting active engagement and critical thinking. Children are encouraged to ask questions, explore topics of interest, and investigate real-world problems. This approach empowers learners to take ownership of their education, developing essential skills such as collaboration, communication, and resilience. By fostering a culture of inquiry, we cultivate independent thinkers who are prepared to tackle challenges both inside and outside the classroom.

Metacognition

A key element of our educational philosophy is the development of metacognitive skills. We encourage students to reflect on their own learning processes, helping them to understand how they learn best. By teaching strategies for self-management, social intelligence, and innovation, we empower learners to become more aware of their thinking and learning styles. This self-awareness fosters greater independence and resilience, enabling learners to adapt their approaches to different tasks and challenges.

Commitment to UNCRC Principles

Our curriculum is deeply committed to upholding the principles of the United Nations Convention on the Rights of the Child (UNCRC). We recognise that every child has the right to education, participation, and development in an environment that respects their dignity and encourages their potential. By embedding these rights into our curriculum, we promote a culture of respect, inclusion, and empowerment.

Community Engagement and Inclusivity

Glasgow's rich community life and diversity are central to our curriculum. We incorporate local history, culture, and resources, fostering a sense of belonging and identity among our learners. Engaging with parents, local organisations, and cultural institutions enriches our curriculum and creates authentic learning experiences, ensuring inclusivity and relevance.

Promoting Equity and Well-being

Recognising the socio-economic challenges faced by many families in our area, we prioritise equity in our educational approach. Our curriculum is designed to be accessible and relevant, ensuring every child has the opportunity to succeed. We integrate social and emotional learning into our daily practices, supporting mental health and well-being, which is vital for student engagement and achievement.

Cultural Awareness and Global Citizenship

In our interconnected world, cultural awareness and global citizenship are essential. Our curriculum includes diverse perspectives and global issues, helping children develop empathy and respect for others. Through projects and partnerships, we instil a sense of responsibility toward local and global communities, preparing our learners to be informed and engaged citizens.

Conclusion

The curriculum rationale for Langside Primary School reflects our commitment to providing a high-quality, inclusive education that responds to the needs of our learners and the community. By integrating play pedagogy and inquiry-based learning, we create a supportive and engaging environment that empowers our children to thrive academically and personally, becoming active, informed members of society. Through this approach, we prepare them not only for academic success but also for a fulfilling life in a diverse and changing world.

