

Glasgow Senior Phase

Towards Better Futures

Next Steps to
Further Education



College Prospectus 2025/26



#Towards Better
FUTURES





Welcome

I am delighted to introduce the 9th edition of Glasgow City Council's Senior Phase Prospectus and my third as the city convener for education and early years. It has been an honour to represent our schools, children and young people at local and national level and over the years to engage and speak to pupils about what is important to them.

To this end, I know then that there is nothing more important than having correct and concise information to hand to make an informed decision on courses available to young people out with their school learning environment.

This annual document has been used by thousands of our senior pupils, their families and school staff over the years - offering clear guidance, advice, and details in partnership with the three colleges in the city – Glasgow Clyde, City of Glasgow, and Glasgow Kelvin.

A one-stop guide to what's on offer to young people across the city to enhance and complement their school learning. The prospectus is once again full of exciting opportunities that are open to all senior phase pupils and highlights the different pathways available.

There is no one size fits all in a city the size of Glasgow and that is what I love about our college collaboration. The flexibility to marry up the school timetable with the benefits of experiencing college life early and the advantages this gives to senior pupils to explore different subjects and skill sets.

Education officers have worked tirelessly with their college peers to offer bespoke packages that will enhance school subjects and national qualifications and widen access to further education and work-based experiences. Young people will continue to be supported by their schools to attend college courses which best suit their needs and where possible, proximity to their school.

Please use this guide and grab the opportunities on offer and I wish our learners every success in their endeavours and the chance to be the best they can be!



Councillor Christina Cannon

City Convener for Education,
Communities and Equalities

Contents

P3	Welcome	P14	College Partners
P6	Contacts	P16	Student Quotes
P7	SQA Qualification Chart	P18	Admin and Financial
P8	Jobs of the Future	P34	Creative and Cultural Industries
P9	Employment by Key Sector	P70	Food, Drink, Tourism and Leisure
P10	General Information	P94	Health, Care and Education

Contents

P120 Land Based
Industries

P126 Transition and
Supported Learning

P146 Energy and
Engineering

P166 Foundation
Apprenticeships

P185 Index



Contacts

College	Campus	Address	Postcode	Phone No.	Contact Email
City of Glasgow	City Campus	190 Cathedral St	G4 0RF	0141 375 5099	Ross.Baillie@cityofglasgowcollege.ac.uk
Glasgow Clyde College	Anniesland Campus	19 Hatfield Drive	G12 0YE	0141 272 9000	cmcgregor@glasgowclyde.ac.uk Level 4-7
	Cardonald Campus	690 Mossspark Drive	G52 3AY	0141 272 9000	Kimberly Cooper & Colette Sanders schoolsliasion@glasgowclyde.ac.uk Level 4-7
	Langside Campus	50 Prospecthill Road	G42 9LB	0141 272 9000	jjoiner@glasgowclyde.ac.uk Level 1-3 Cardonald & Langside swilson@glasgowclyde.ac.uk Level 1-3 Anniesland
Glasgow Kelvin College	East End Campus	2 Haghill Road	G31 3SR	0141 630 5000	AShields@glasgowkelvin.ac.uk
	Easterhouse Campus	1200 Westerhouse Road	G34 9HZ	0141 630 5000	mhendry@glasgowkelvin.ac.uk Level 1-3
	Springburn Campus	123 Flemington St	G21 2TD	0141 630 5000	
RSBI Blindcraft	Atlas Industrial Estate	12 Edgefauld Avenue	G21 4BB	0141 287 0830	Steven McGurk - steven.mcgurk@citybuildingglasgow.co.uk
Towards Better Futures	Michelle Kershaw TBF Principal Officer	City Chambers East, 40 John St	G1 1JL	0141 287 6218	michelle.kershaw@glasgow.gov.uk
	Jackie Quigley Partnerships Manager	City Chambers East, 40 John St	G1 1JL		Jacqueline.Quigley@glasgow.gov.uk
	Michael Harkins Citywide Programmes	City Chambers East, 40 John St	G1 1JL	0141 287 8044	michael.harkins@glasgow.gov.uk

SQA Qualification Chart

THE SCOTTISH CREDIT AND QUALIFICATIONS FRAMEWORK

This Framework diagram has been produced to show the mainstream Scottish qualifications already credit rated by SQA and HEIs. However, there are a diverse number of learning programmes on the Framework, which, due to the limitations of this format, cannot be represented here. For more information, please visit the SCQF website at www.scqf.org.uk to view the interactive version of the Framework or search the Database.



SCQF Levels	SQA Qualifications			Qualifications of Higher Education Institutions	Apprenticeships & SVQs
12				Doctoral Degree	Professional Apprenticeship
11				Masters Degree, Integrated Masters Degree, Post Graduate Diploma, Post Graduate Certificate	Graduate Apprenticeship Professional Apprenticeship SVQ
10				Honours Degree, Graduate Diploma, Graduate Certificate	Graduate Apprenticeship Professional Apprenticeship
9			Professional Development Award	Bachelors / Ordinary Degree, Graduate Diploma, Graduate Certificate	Graduate Apprenticeship Technical Apprenticeship SVQ
8		Higher National Diploma		Diploma Of Higher Education	Higher Apprenticeship Technical Apprenticeship SVQ
7	Advanced Higher, Awards, Scottish Baccalaureate	Higher National Certificate		Certificate Of Higher Education	Modern Apprenticeship SVQ
6	Higher, Awards, Skills for Work Higher				Modern Apprenticeship Foundation Apprenticeship SVQ
5	National 5, Awards, Skills for Work National 5				Modern Apprenticeship SVQ
4	National 4, Awards, Skills for Work National 4	National Certificate	National Progression Award		SVQ
3	National 3, Awards, Skills for Work National 3				
2	National 2, Awards				
1	National 1, Awards				

Jobs of the Future

Job openings are expected to be concentrated in a small number of industries, with four industries in Glasgow City Region forecast to account for 71,500 (58.3 per cent) of the requirement. These are (see Figure 10):



Wholesale and Retail Trade:
22,600 people



Administrative and Support Service:
19,900 people



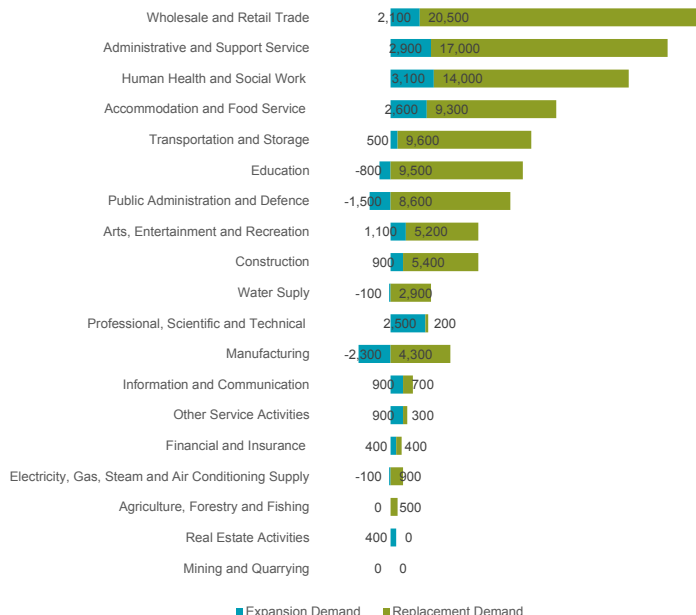
Human Health and Social Work:
17,000 people



Accommodation and Food Service:
11,900 people

Headline figures for each industry do not show how the composition of the industry is changing. Within industries changes to operating practices are taking place, for example the shift to online shopping with a reduction of shopping on the high street within Wholesale and Retail Trade. These shifts are not captured in the aggregated groups. Similar experiences to a greater or lesser extent will be taking place in other industries too and we would encourage readers to bear this in mind when interpreting the data. For further sectoral evidence, please see our Sectoral Skills Assessments.

Figure 10: Forecast total requirement by industry (2022-2025), Glasgow City Region



* Figures may not sum due to rounding.

Employment by Key Sector

In Glasgow City Region, employment growth by industry is forecast across a range of occupations. Growth is expected to be highest in Corporate Mangers (2,300 people), Business and Public Service Associate Professionals (2,100 people) and Science and Technology Professionals (2,000 people).

Occupations that are growing indicate how the labour market will develop in the future in terms of the type of jobs created and skills that may be required. However, the replacement requirement of people in the region will create a strong demand for labour.

By occupation, the greatest number of people are forecast to be required in (see Figure 11):



Sales Occupations:
13,600 people

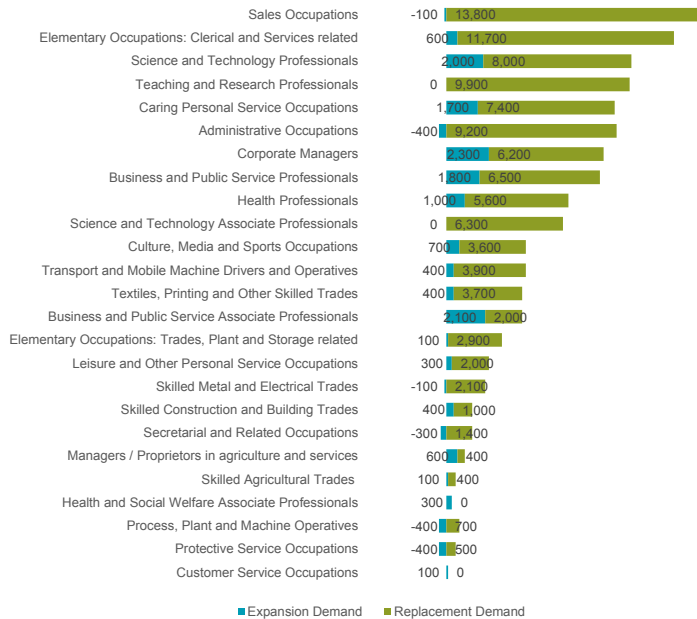


Elementary Occupations: Clerical and Services related:
12,300 people



Science and Technology Professionals:
10,100 people

Figure 11: Forecast total requirement by occupation (2022-2025), Glasgow City Region



* Figures may not sum due to rounding.

General Information

The Glasgow Senior Phase (GSP) Prospectus for Levels 1 – 7 will also be available online at <https://registration.goglasgow.org.uk/Register>

Allocation of Places - Level 1 – 3 Courses

The Towards Better Futures (TBF) team will provide each school with a list of college programmes that we will be supporting for 2025/2026. From the list provided schools will select how many places that they require on each course. The TBF team will then inform each school how many places that they have successfully received on each of the courses. **The schools will be responsible to ensure that they select the most appropriate students for each course per the course Entry Requirements.**

In the first instance places will be allocated on a geographical basis (encouraging the young people to attend the college nearest to their school). This will then be opened out to all schools on a citywide basis depending on student up take. If courses are oversubscribed the student's name will be added to a reserve list and they will be notified if a place becomes available.

Application Process

Anyone who is in their last year at school from S4-S6 can apply for a place on most courses, although there are some conditions. Students should carefully consider the most suitable SCQF level for their current stage of learning and should discuss their application with their Pastoral Care Teacher.

The Application Process has 3 main steps:

Step 1 Registration Level 1 - 3

Schools will notify the young person that they have been allocated a place on one of the TBF college courses. All Students then need to register and submit

their course choice (s) on the college portal and complete the College Registration Form available at: <https://registration.goglasgow.org.uk/Register> Registrations for Levels 1 – 3 to be submitted by mid May

Step 2 Course Choices

- For Level 1 – 3 courses students can register up to 2 choices on the college portal.
- Students can now only attend 2 college courses per week.
- Students can generate a copy of their college course choices for their own records.

Step 3 Acceptance Form

Once the students have accepted and registered for a college place on the college portal, the College Acceptance Form is required to be completed in order to secure their place. Teachers will have to complete the Teachers Section (ASN Information) on the Glasgow Senior Phase Registration Portal first, in order to generate a copy of their Acceptance Form. The ASN information must be fully completed and returned before the end of June 2024, to ensure that the colleges prepare for the needs of your pupils.

The Acceptance Form to be issued to each student should be taken home and signed by their parent/ carer/ guardian. This is available at <https://registration.goglasgow.org.uk/account/logon>

All Acceptance Forms for levels 1 – 3 to be sent directly to the TBF registration mailbox at GSCP@glasgow.gov.uk and MUST be in place by June prior to them starting the course in August. Once the students have registered and submitted their College Acceptance Form for their selected course(s) they will receive an automatic response such as:

General Information

“Your College Acceptance Form has been received; you will be notified as soon as possible if this application for the course(s) has been successful.”
Interviews may be required for certain courses to confirm students have a genuine interest, meet entry requirements and are suitable for their chosen course.

Level 4 – 7 College Courses

Each student can register for up to 2 programmes per college. Anyone who is in their last year at school from S4-S6 can apply for a place on all courses. Students should apply to their local college in the first instance to ensure a smooth transition to a full-time course. To register for a TBF Senior Phase Course students will apply directly to any of the 3 City colleges below on their weblinks to complete their registration process.

This will be co-ordinated by the School College Liaison contact situated in each of the colleges.

- [City college Senior Phase](#)
- [Glasgow Clyde College Senior Phase](#)
- [Kelvin College Senior Phase](#)

The colleges admissions procedures aim to treat everyone who applies fairly. If you meet the entry qualifications for the course, and the colleges have places available, they will make the students a direct offer. Details of entry qualifications and selection criteria can be found in the TBF prospectus for 2025/2026.

Student Reference

Schools may be asked to provide a student reference for their students to secure their college place.

Personal Statement

Students may be asked to provide a personal statement to the college outlining why they are interested in taking part in the course.

Allocation of Courses

After the closing date the College Liaison Officer and the College lecturer will choose the successful candidate and notify the student, school and the Local Authority that they have been allocated a place on one of the TBF college courses.

Interviews

Student interviews may be required for some courses. Acceptance Form Once the students have accepted their place on their course the college will send out a Conditional Offer. Conditional Offers must be accepted within two weeks or they will be cancelled and the place will be offered out to someone else on the waiting list.

Delivery of Courses Levels

4 - 7 courses run for one academic year from August 2025 – April 2026. Most courses will be delivered over two school afternoons Tuesday and Thursday.

As courses run over a variety of days and time’s please check the prospectus for further details.

- Levels 1 - 3 courses run from August 2025 until June 2026
- Level 1 – 3 courses are delivered on a daily basis.

Foundation Apprenticeships

Foundation Apprenticeship applications will be processed through a separate system, co-ordinated by the Foundation Apprenticeship Team situated in all 3 Glasgow Colleges.

- [City of Glasgow College](#)
- [Glasgow Clyde College](#)
- [Kelvin College](#)

General Information

Benefits to Me

All college courses are designed to help students progress in their chosen career path by developing skills recognised and associated with the world of work:

- Attendance
- Punctuality
- Problem Solving
- Working with others
- Independent Learning

On completion of the programme, you will see a range of progression routes in relation to each individual course to help students become aware of the related careers and routes available post school.

Students from previous years have shown an interest to enter Further/Higher Education or Apprenticeship Programmes based on the training that they have received. Failure to attend may result in students not achieving the full qualification and may result in being withdrawn from the course.

Students are expected to continue to attend college during their prelims where possible.

Registers will be available to schools each week on the college portals and any attendance issues should be actioned by the School Contact responsible for the programme as a matter of urgency.

On completion of their course's students may have the offer of a full-time course at college which is the next step in their further education pathway.

Attendances

Pupils are expected to maintain a high level of attendance and to inform their school if they will be unable to attend their chosen option on the day of the course due to sickness, prelims etc. It is the responsibility of the nominated staff member in schools to inform the college of any absences and to check the College Attendance Portals on a daily or weekly basis to monitor pupil attendance and to ensure that any absences are pickup up on.

Transport

The Young Persons Free Travel Scheme was implemented on the 1st February 2022 which provides FREE bus travel to and from college.

More information is provided on the following link [Young Persons' Free Bus Travel Scheme](#) (transport.gov.scot).

Please note: For pupils on the level 1-3 courses, individual transport is no longer guaranteed. We will be looking at the possibility of sharing taxi runs, for pupils attending the same college/courses at the same time, in an effort to maximise taxi efficiency and reduce costs; which will allow us to continue to provide the same provision as 24/25. We will discuss this with schools before allocating shared taxis, to ensure this will be suitable for all young people involved.

Please also note: for level 4 – 7 students, there will be no taxi provision to and from their college course. Students will be expected to use their free bus pass, and, in some cases, students will be allocated a train pass. Taxis will only be available going to college in very exceptional circumstances and NO taxis will be provided on homeward journeys from college.



College Partners

Whatever your plans and careers aspirations the 3 City colleges are in a unique position to help you achieve your potential and realise your ambitions. Take a good look at the exciting range of learning opportunities listed in the Glasgow Senior Phase prospectus and think about how coming to College could set you on the road to success. At College you will be offered advice and support from the following members of staff.



Alan Shields
School Liaison
Glasgow Kelvin
College

“ Studying at college, whilst still at school, is a unique opportunity for young people to develop the skills, qualifications and confidence that they will need in employment and education after school. The state of the art facilities and learning experience will make this an unforgettable experience for everyone who takes part. The Team at Glasgow Kelvin College, will help, guide and support you to have a meaningful, worthwhile college experience. ”



Michelle Hendry
**Curriculum
Manager**
Glasgow Kelvin
College

“ Our Support for Learning senior phase for level 1-4 runs across two campuses- Easterhouse and East End. We offer an exciting range of courses within the department and we enjoy having the opportunity to support the young people in their transition from school to college. Our team at Glasgow Kelvin College, will help, guide and support you to have a meaningful, worthwhile college experience. ”



Steve Wilson
**Supported
Education
Curriculum
Manager &
Lecturer**
Anniesland
Campus

“ Within the Anniesland campus of Glasgow Clyde College our Supported Learning Senior Phase levels 1-3 courses aim to strengthen a pupil's skills and qualities, increase their confidence and help prepare them for the transitional change from school to college and beyond. All our courses encourage individuals to develop responsibility, commitment and resilience within an adult environment. ”



Julie Joiner
**Curricular
Manager
Supported
Learning**
Glasgow Clyde
College

“ The Level 1-3 Senior Phase Programme at Glasgow Clyde offers an engaging transition from school to a more mature learning environment. Students can explore a variety of subjects beyond the standard school curriculum and consider various future options. This is a great opportunity to discover new interests and plan for the future. ”

College Partners



Catrina McGregor
Curriculum Manager
Schools Liaison
Glasgow Clyde College

“ The Senior Phase Curriculum delivered through colleges offers a valuable and transformative experience for young people in S4 to S6. Attending college provides a unique opportunity to complement their school studies with greater variety and depth. It exposes pupils to a fresh learning environment, enabling them to explore career possibilities and develop a deeper understanding of further education and the world of work. This experience aims to ignite curiosity, foster ambition, and set young people on a meaningful vocational path, filled with opportunity and growth. ”



Ross Baillie
Schools Programme
Co-ordinator
City of Glasgow College

“ Senior Phase presents a fantastic opportunity for young people. Whether it is the beginning of a Vocational Pathway or the bolstering of a UCAS application with a qualification they could not study otherwise, Senior Phase students have the chance to explore their options and make informed choices for their future. Former students tell us that Senior Phase courses at City of Glasgow College resulted in them feeling socially and academically prepared for the next step on their journey. ”



Leigh Pepin
Depute Headteacher
Parkhill Enterprise Academy

“ The Enterprise Academy at Parkhill has been running for 8 years now and provides a range of hospitality and horticulture courses aimed at young people who need support to make their next step. We offer a supportive and nurturing environment where pupils can develop skills and gain qualifications. ”

“ I’ve got a **passion** for music, and I like listening to podcasts, so I was looking for this sort of course. I was surprised at **how easy** it is to use the equipment and I have met people that I probably wouldn’t have spoken to otherwise. I would **highly** recommend it. ”

Colin McHugh

St Roch’s Secondary School
NPA Radio & Podcasting

“ I would highly recommend this course as you get the chance to learn and analyse **real world issues** such as reoffenders and why individuals commit crime. A few of the topics you may have a chance to look at are forensic psychology and how nature v nurture plays a role in **defining** a criminal or how crime has changed and varied across time and around the world. ”

Dakota Sneddon

Bannerman High School
NPA Criminology

“ This course helps you learn the fundamentals of filmmaking. You get to use professional equipment and software during a range of fun and creative projects. I'd recommend this course to anyone looking to develop their creative and practical skills with a view to working in this industry. ”

Dylan Izzard

Shawlands Academy

NPA Television Production

“ I have enjoyed this course because I have worked independently to create my own game and learned how to create all my own assets as well as developing my programming skills. ”

Anna Cumbers

Hyndland Secondary School

Games Development Course



Admin and Financial and Business Services

Level 4 - 7

CAMPUS

City

ATTENDANCE PATTERN

Tuesday and Thursday
1.30pm - 4pm

COURSE AWARD

SCQF Level 5
Credit Points 24

UNITS COVERED

- TBC

HOURS OF LEARNING

155

NPA Accounting

Course Outline

Accountants help organisations to succeed. They develop effective accounting procedures and provide financial and cost information to management.

The course comprises two areas of study.

Financial accounting: You will learn how to prepare accounting statements, and analyse, interpret and report on an organisation's financial performance. You will use these techniques in applying a systematic approach to solving financial problems.

Management accounting: You will develop skills, knowledge and understanding of internal accounting information, and be able to prepare this using a range of basic accounting techniques.

You will discover how to help businesses keep track of their money and explore the significant impact that this information has on the future planning, control and success of a business.

This subject has a large practice component. You will learn from real-life situations that develop your skills. You can then apply your skills to communicate financial and management information to detail an organisations performance.

Course Entry Requirements

This course suits students who love a challenge, have an eye for detail and are good problem-solvers. It is essential that you have a National 4 qualification in a mathematics or numeracy related subject.

Progression Pathways

Students who pass with Grade C or above will be to progress onto our Higher Accounts School College Partnership program or join NQ Accounting on a full-time basis.

Employment Routes

The skills that you develop in accounting are useful in many careers such as finance, IT consulting, tax planning and management consulting.

Course Outline

This course is designed to equip you with skills and knowledge that will enhance your employment prospects in a wide variety of opportunities within the financial services industry.

You will have the chance to interact with industry partners from across the sector, gaining real-world experience through a series of guest speakers, site visits and workshops.

You will examine the structures, products and services of the main financial services providers, and consider the impact the sector has on society. You will explore how the sector is regulated, considering consumer protection, data protection and money laundering regulations.

As well as investigating the types and range of career opportunities within the sector, you'll develop transferable customer service skills, learning to assess and respond to the needs of others. You will learn how to create and maintain a personal budget, consider the issues surrounding borrowing and debt, and explore the concepts of paying and receiving interest.

Course Entry Requirements

This course would suit organised, logical and detail orientated students who have achieved at least two National 4 STEM qualification and are working towards National 5's in at least two other subjects.

Progression Pathways

National 5 Financial Services is an ideal first qualification on a path through to HNC & HND to degree level qualifications in universities across Scotland. Modern Apprenticeships are also available in the Financial Services Sector.

Employment Routes

The Financial Services sector currently employs approximately 157,000 people in Scotland and is expected to continue to grow. With further study, students can move into a variety of occupations including insurance, banking and business.

CITY OF GLASGOW
COLLEGE

CAMPUS

City

ATTENDANCE PATTERN

Tuesday and Thursday
1.30pm - 4.00pm

COURSE AWARD

SCQF Level 5
Credit Points 24

UNITS COVERED

- Financial Services An Introduction
- Personal Finance Awareness
- Building Positive Relationships with Customers and Colleagues
- Employability Skills

HOURS OF LEARNING

155

CAMPUS

City

ATTENDANCE PATTERN

Tuesday and Thursday
1.30pm - 4pm

COURSE AWARD

SCQF Level 5
Credit Points 24

UNITS COVERED

- How a Supply Chain Works
- Customers and Suppliers in a Supply Chain
- Flow of Orders in the Supply Chain
- Distribution and Storage of Goods

HOURS OF LEARNING

155

Supply Chain & Procurement

Course Outline

Supply Chain Management (SCM) is the process of overseeing and controlling the movement of goods and services from manufacture to the customer. SCM is also used to support medical missions, conduct disaster relief operations, and respond to other emergencies.

You'll explore the typical structure of supply chain models and identify potential problems within these systems. You'll have the chance to develop a range of skills, applying your knowledge to real life case studies and creating solutions to identified issues.

You'll investigate the measures being taken to improve the efficiency of supply chains and to protect the environment. You will explore the environmental costs of 'fast fashion' and global sourcing and investigate how organisations respond to corporate responsibility.

This course benefits from industry partners providing guest speakers, real life experience and the opportunity for site visits.

Course Entry Requirements

This course would suit collaborative, creative thinkers who have National 4 English and National 5 in Administration, Business or Modern Studies.

Progression Pathways

Combined with a pass at Higher, successful completion of this enables entry to HND Supply Chain Operations, from there you can progress directly into the 3rd year of an International Supply Chain Operations degree at Glasgow Caledonian University.

Alternatively, you can progress from this NPA into further qualifications in Business, Financial Services or Admin & IT.

Employment Routes

Supply chain management today is emerging as a highly desirable sector for employment providing an exciting high-tech career. Whilst you may directly enter the workforce, Modern and Graduate Apprenticeships are also available. This course could be your first step to a wide variety of careers including supply chain design and planning, Wholesale and Retail Buyers or working in Disaster Relief Management.

Course Outline

This course will introduce you to the business side of retail fashion. This course is not design-orientated but helps develop an understanding of the creative processes of retail fashion and how they're managed.

You'll investigate the historical and environmental factors which have influenced fashion over the years. You'll explore the process of how a fashion concept seen on the catwalk becomes a high street fashion garment.

You'll consider merchandising approaches in the fashion industry researching how fashion is branded, displayed and promoted and the role of the marketing mix in fashion. You'll compare different approaches used in the industry and create your own merchandising ideas.

You'll discover what it takes to be a fashion buyer. You'll investigate different buying structures, the stages of the buying process and the factors involved in producing a retail buying plan.

You'll have the chance to create, design and implement your own fashion event, or show, to gain the relevant experience and skills.

Course Entry Requirements

This course is suitable for collaborative and creative, critical thinkers who have career aspirations within Fashion, Retail or Marketing who have achieved three National 5's including English.

Progression Pathways

On successful completion of this course with all credits, you can progress onto HNC/D Awards in Fashion Business and Marketing Communications.

Employment Routes

With further study, you could move into the Retail Fashion Industry. This dynamic and varied sector offers many careers including Fashion Retail Management, Fashion Merchandising, and Fashion Buying.

CITY OF GLASGOW
COLLEGE

CAMPUS

City

ATTENDANCE PATTERN

Tuesday and Thursday
1.30pm - 4.00pm

COURSE AWARD

SCQF Level 6
Credit Points 18

UNITS COVERED

- Fashion: An Introduction
- Fashion Merchandising: An Introduction
- Branding: An Introduction
- Retail Buying

HOURS OF LEARNING

155

CAMPUS

City

ATTENDANCE PATTERN

Tuesday and Thursday
1.30pm - 4.00pm

COURSE AWARD

SCQF Level 6
Credit Points 24

UNITS COVERED

- TBC

HOURS OF LEARNING

155

Higher Accounting

Course Outline

Every business needs to keep records of their finances. Effective accounting procedures can provide timely and relevant information to management, helping organisations perform successfully. This course comprises two areas of study.

Financial accounting: Develop an understanding of how to prepare routine and complex financial accounting information. Learn about current financial accounting regulations, how to analyse this information and apply it to a range of business structures.

Management accounting: Develop and understanding of internal accounting. Learn how to prepare and use information when making decisions about the planning, control and future direction of an organisation.

Studying accountancy will enable you to acquire the transferable skills and knowledge necessary for understanding and taking part in the world of business. This subject helps to improve your personal effectiveness by developing many transferable skills such as problem solving, numeracy, commercial awareness, communication, organisation, financial management, analytical, ICT skills and teamwork.

Course Entry Requirements

This course suits students who love a challenge, have an eye for detail and are good problem-solvers. Students should have passed National 5 Mathematics and English.

Progression Pathways

Following successful completion of the Higher you can progress through HNC & HND to degree level qualifications in Universities across Scotland. Modern Apprenticeships are also available in Accounting.

Employment Routes

If you're interested in a career in accountancy, our senior phase courses in accountancy will give you the opportunity to gain a valuable accountancy qualification. In Scotland, around 86,000 people are employed in the financial services industry.

Many accountancy roles come with an excellent salary and benefits packages, as well as the offer of training to progress your career further.

Course Outline

Economics relates to every aspect of our lives; from the decisions we make as individuals or families to the structures created by governments and businesses.

By studying Economics you'll understand and make use of economic information. You'll learn to analyse, interpret, predict and explain the actions of individuals, businesses and governments to various economic situations. You will develop an appreciation of how markets and governments work and how the decisions taken in these economic contexts impact on our daily lives.

Economics is therefore a useful subject for many students, particularly if you are interested in a career in business or finance, central or local government.

Course Entry Requirements

It is essential that students have achieved 3 National 5's including English & Maths at Grade C or above, and are working towards a Higher qualification.

Progression Pathways

Following successful completion, you can progress onto Finance, Business or Social Sciences courses within City of Glasgow College.

Employment Routes

With further study you work in a variety of roles within the public, private and third sector. Economics graduates often work as knowledge exchange assistants, research assistants, research officers, policy analysts and economic or policy advisors.

CAMPUS

City

ATTENDANCE PATTERN

Tuesday and Thursday
1.30pm - 4.00pm

COURSE AWARD

SCQF Level 6
Credit Points 24

UNITS COVERED

- Economics of the market
- UK economic activity
- Global economic activity

HOURS OF LEARNING

155

CAMPUS

City

ATTENDANCE PATTERN

Tuesday and Thursday
1.30pm - 4.00pm

COURSE AWARD

SCQF Level 6
Credit Points 18

UNITS COVERED

- The Nature and Extent of Crime
- Forensic Psychology
- Crime Scenes

HOURS OF LEARNING

155

NPA Criminology

Course Outline

Criminology is the scientific study of crime and criminals. You will consider the causes of crime, how it is measured and methods to prevent crime from occurring.

You will learn about Forensic Psychology; developing an understanding of different psychological theories of criminal behaviour, including psychopathy and extraordinary criminal behaviour.

Through bite-sized chunks of learning you will discover the main principles involved in prosecution of crime in Scotland, and explore the effects of crime on the individual and the community.

Course Entry Requirements

This course would suit students who are interested in how society works. It is essential that Students have achieved 3 National 5 subjects at C or above, including English.

Progression Pathways

Successful completion of the NPA allows students to progress through HNC to HND in Social Sciences.

Employment Routes

Responding to the changing nature of crime makes Criminology a dynamic and challenging profession. With further study, you could access numerous different career options including: criminal profiling, community planning, advocacy, legal services and forensic science.

Course Outline

Everything in the modern world is data driven. Working with data is now an essential skill. This brand-new course presents an ideal introduction to one of the most promising and in-demand career paths for the 21st century.

Utilising the tools and techniques of data science, you'll explore the main methods of data analysis, and use industry standard software to identify patterns and trends.

You'll explore current practice in corporate data security and consider the creation of a data security policy for a professional organisation. Taking ethical, legal and professional considerations into account, you'll be able to justify your policy decisions.

You'll investigate the importance of online safety and explore how to reduce the risk of cyber-attacks. You'll consider the role of social engineering in cyberattacks and the implications of cyber threats for personal privacy.

Course Entry Requirements

This course would suit organised, logical and detail orientated students who have achieved at least two National 4 STEM qualifications and are working towards National 5's in at least two other subjects.

Progression Pathways

The Data Science NPA is an ideal first qualification on a path through to HNC & HND to degree level qualifications in Universities across Scotland.

Employment Routes

LinkedIn lists data-science-related skills as the most in-demand by companies and this is likely to continue to grow in coming years.

Data Science specialists can enjoy a variety of future career opportunities including: Business Intelligence Analyst, Data Analyst, Statistician or Systems Analyst.

CITY OF GLASGOW
COLLEGE

CAMPUS

City

ATTENDANCE PATTERN

Tuesday and Thursday
1.30pm - 4.00pm

COURSE AWARD

SCQF Level 6
Credit Points 18

UNITS COVERED

- Data Citizenship
- Data Science
- Data Security

HOURS OF LEARNING

155

CAMPUS

City

ATTENDANCE PATTERN

Tuesday and Thursday
1.30pm - 4.00pm

COURSE AWARD

SCQF Level 6
Credit Points 30

UNITS COVERED

- The Regulatory Framework
- Communication
- Promoting Positive Customer Relationships
- Personal Finance Awareness

HOURS OF LEARNING

155

NPA Financial Services

Course Outline

This course is designed to introduce you to the world of work in the Financial Services sector and is enhanced with a programme of employer engagement workshops and activities, including The Investment Challenge.

Working in a team, you will use an online business simulation to grow a virtual investment fund, making decisions on what to buy and sell based on your own research from incoming news stories.

You will develop your communication, customer service and employability skills, and will create and maintain a personal budget whilst considering the issues surrounding borrowing and debt.

You will learn how the Financial Services sector contributes to the economy, the different institutions operating in the sector and the job roles and career paths available.

You will gain an appreciation of the importance of regulation within the sector and will be introduced to the various categories of risk management and how companies manage risk.

Course Entry Requirements

This course would suit organised, logical and detail orientated students. It is essential that you have achieved Nat 5 English or a relevant STEM subject. You should also be able to work towards a Higher qualification.

Progression Pathways

Following successful completion of the NPA you can progress through HNC & HND to degree level qualifications in Universities across Scotland.

Modern Apprenticeships are also available in the Financial Services Sector.

Employment Routes

The Financial Services sector currently employs approximately 157,000 people in Scotland and is expected to continue to grow. This course prepares learners for a variety of job roles by developing key employment skills such as customer care.

Course Outline

If you are passionate about addressing injustice, can argue your point and have an eye for detail, you may want to consider a career in law. This dynamic and interactive course is designed to give you an introduction on the main sources of Scots and Criminal Law,

You will have the opportunity to interact with professionals working within the legal sector. You'll gain real world experience through a series of guest speakers including Police Scotland, and may have the chance to visit the High Court and Sheriff Court.

You will investigate what constitutes a crime in Scotland and the main principles involved in prosecution of crime. You will consider the nature of crime and how it effects the individual and the community.

Through collaborative study, debates and mock trials you will develop knowledge and understanding of the system of criminal prosecution in Scotland, and explore the roles, and responsibilities within the legal profession.

Course Entry Requirements

This course is suitable for collaborative and creative, critical thinkers who have career aspirations within legal services. Students should be working towards achieving Higher English.

Progression Pathways

Successful completion of the NPA enables you to progress directly to our Legal Services HNC (Level 7). Alternatively, if you have the NPA alongside Higher English at level 'C' or above you have the opportunity to progress onto the HND Legal Services.

Employment Routes

There are a great number of opportunities in the Scottish Legal Profession. This course could be your first step towards a career as a Paralegal, Solicitor or Advocate.

Graduates of our Legal Services HND have gone on to practice law, with some even managing their own law firms.

CITY OF GLASGOW
COLLEGE

CAMPUS

City

ATTENDANCE PATTERN

Tuesday and Thursday

1.30pm - 4.00pm

COURSE AWARD

SCQF Level 6

Credit Points 18

UNITS COVERED

- Introduction to Scots Law
- Crime and Society

HOURS OF LEARNING

155



CAMPUS
Langside

ATTENDANCE PATTERN
Tuesday and Thursday
1.30pm - 4.00pm

COURSE AWARD
SCQF Level 7
Credit Points 18

UNITS COVERED

- Criminology:
The Accused's Journey
- Applying Sociological
Theories to Sociological
Topics
- Crime Scenes

HOURS OF LEARNING
160

PDA Criminology & Law

Course Outline

Glasgow Clyde College will provide you with the opportunity to gain a Personal Development Award in Criminology with Law. The award aims to provide you with an understanding of the accused's journey through the Scottish Criminal Justice System.

You will be given the opportunity to compare the Scottish legal system with that of other countries and through this, discuss the efficacy of the Criminal Justice System, reoffending rates and noncustodial sentences.

In addition, you will cover sociological theories of crime and deviance with the topic of the mass media and its influence on public perception being analysed.

Course Entry Requirements

You must have a clear interest in the subject area along with:

- Higher English at A/B Level

Ideal students will be in S5 or 6

Progression Pathways

On successful completion of the course along with good attendance and commitment to this course, you will be given the opportunity of internal progression on to:

- HNC Social Sciences or
- HND Social Sciences

The level you might enter would depend on the level and relevance of your other qualifications. For those interested in studying Law at university this provides an excellent introduction to the institutions, individuals and procedures involved in the Scottish Legal System.

Employment Routes

Responding to the changing nature of crime makes Criminology a dynamic and challenging profession.

With further study, you could access numerous different career options including: criminal profiling, community planning, advocacy, legal services and forensic science.

Course Outline

This course offers you a unique opportunity to complete an HNC in Business whilst in your 6th year at school.

You will develop the essential knowledge and skills needed to succeed within the business sector, while also gaining a broader insight into specialist areas including marketing, communications and managing people and organisations.

With business roles being in high demand, particularly within the UK, studying the HNC in Business will provide a pathway into the industry for ambitious and committed students. There are a number of significant advantages in choosing to complete this course, including:

- you won't pay any fees or require a student loan potentially saving you money.
- when you finish school, you can progress directly onto the second year of any of our HND Business options.
- you can continue your studies at school as normal.
- you will attend college for 2 days per week and complete study in your own time.

Course Entry Requirements

Students should have at least 3 National 5 qualifications at grades C or above plus two Highers at C or above. Relevant subjects include English, Administration, Business and Management, Economics, Geography, History, Modern Studies, Maths or Science subjects. Other subjects may be considered.

Progression Pathways

Successful students have the option to progress to further study at a higher level. For example progression to:

- HND Business at City of Glasgow College – one year full-time to complete the HND Business; or Second year of most business-related degree programmes at a range of universities

Students who successfully complete HND Business can articulate to the third year of many degree programmes in business.

Employment Routes

The course helps develop a unique set of transferrable skills, knowledge and behaviours that can be applied to any business – no matter how big or small.

CITY OF GLASGOW COLLEGE

CAMPUS

City

ATTENDANCE PATTERN

Tuesday and Thursday
9.00pm - 5.00pm

COURSE AWARD

SCQF Level 7
Credit Points 32

UNITS COVERED

- Marketing: An Introduction
- Economic Issues: An Introduction
- Communication: Business Communication
- Managing People and Organisations
- Accounting for Business: An Introduction
- Information Technology in Business: Spreadsheets
- Business Fundamentals and Emergent Technologies
- Digital Marketing Communications: Content Development
- Business Graded Unit

HOURS OF LEARNING

185

CAMPUS

City

ATTENDANCE PATTERN

Tuesday and Thursday
9.30am - 5.00pm

COURSE AWARD

SCQF Level 7
Credit Points 32

UNITS COVERED

- Financial Sector:
An Introduction
- Personal Financial Services
- Financial Services Graded
Unit
- Communication:
Business Communication
- Managing People and
Organisations
- Information Technology :
Application Software 1

HOURS OF LEARNING

185

HNC Financial Services

Course Outline

Our HNC in Finance, Risk and Business is designed to provide you with the key competencies required to enter the world of Financial Services.

Throughout the course, you will get an insight the relationships between financial institutions, markets and customers in the UK.

You will learn about the features of the economy and use of investment, savings and lending products offered to personal customers and the regulatory environment applicable to personal financial services. This course will be enhanced by industry visits and guest speakers. There are a number of significant advantages in choosing to complete this course, including:

- you won't pay any fees or require a student loan potentially saving you money.
- when you finish school, you can progress directly onto the second year of any of our HND Business options.
- you can continue your studies at school as normal.
- you will attend college for 2 days per week and complete study in your own time.

Course Entry Requirements

A minimum of one relevant Higher at Grade C or above and a minimum of four National 5s at Grade C or above in relevant subjects, these must include English or Maths or equivalent; subjects may include Business related subjects, Maths, English, Social or STEM subjects.

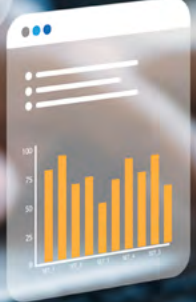
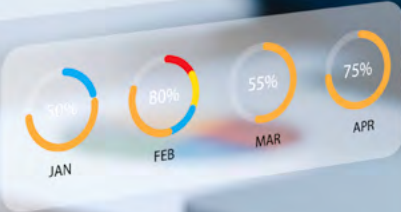
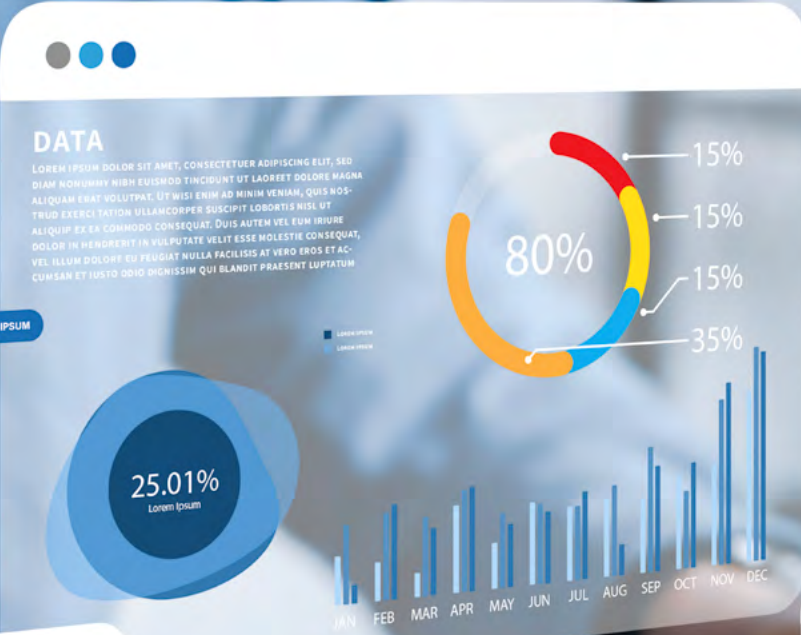
Progression Pathways

You can progress to HND Financial Services which articulates to directly to year 3 of some university courses in Finance, such as:

- BA Finance, Investment and Risk at GCU
- BA Financial Services at Edinburgh Napier
- BA Business Management with Finance at Queen Margaret University

Employment Routes

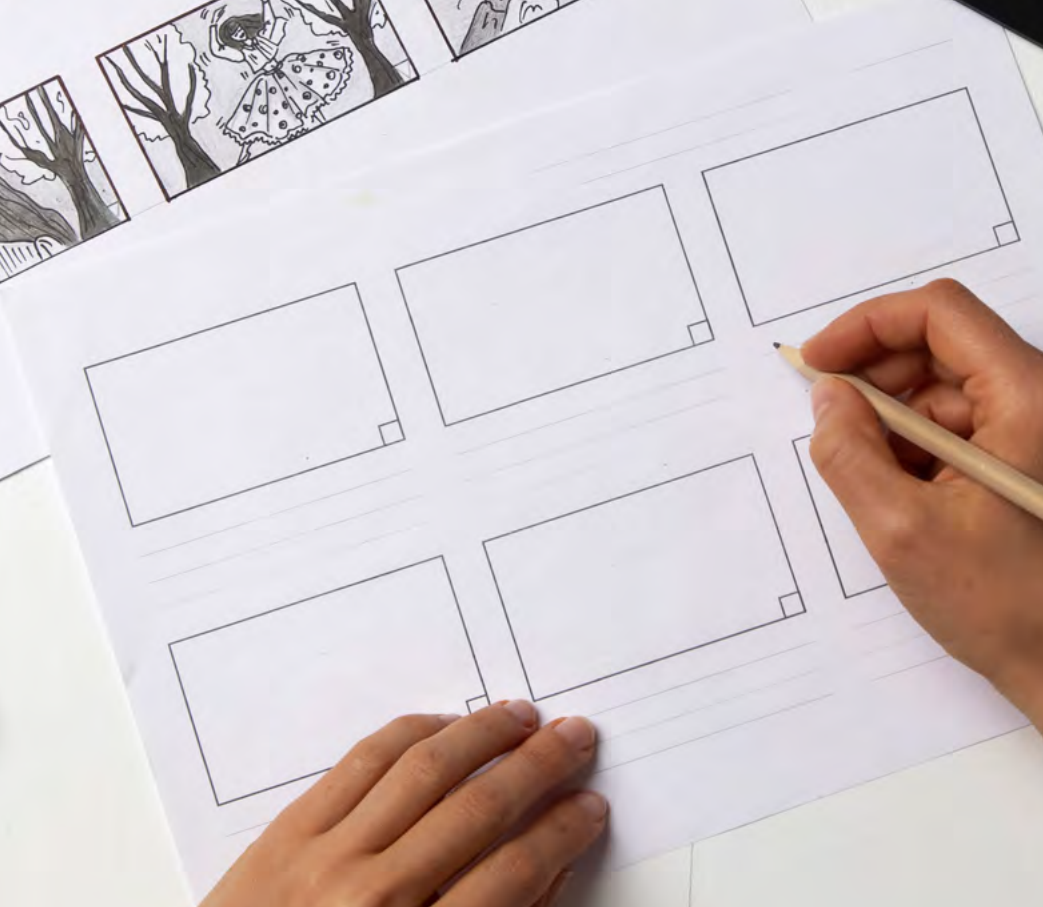
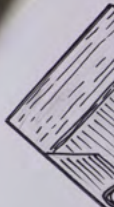
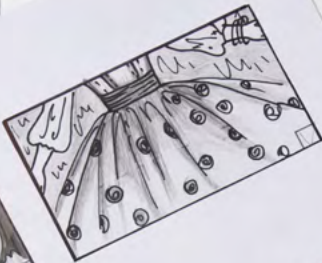
This course could lead to entry level positions in a variety of employment opportunities, including working in banking, building societies, pension funds, investment companies, insurance, unit trusts, stock market operations, life and pensions, asset management and intermediation.





Creative and Cultural Industries

Level 1 - 3



Course Outline

*** This course is predominately aimed at students from non-mainstream educational establishments and specialist units who have a learning disability/autism and require additional support with their learning ***

This course requires a half day a week attendance throughout the duration of the academic year. The target audience is pupils in the Senior Phase who also have a learning disability.

The course is designed to examine the techniques of animation and film, the student will recognise various aspects and tricks of the trade, while having the opportunity to create their own animation, learn how to navigate Photoshop, and produce work unique to each of them.

Course Entry Requirements

- Students should be working at Level 2 or 3
- They should have an interest in ICT and animation.
- Students will be asked to participate in an appropriate selection event

Progression Pathways

Supported Education courses such as:

- Learning for Independence - Level 2
- Skills for Life & Work at Level 3
- Moving On - Level 3 / 4
- DNF Project Search - Level 3 / 4

Employment Routes

- ICT or other



CAMPUS
Anniesland

ATTENDANCE PATTERN

Tuesday
1.00pm - 3.30pm

COURSE AWARD

SCQF Level 2/3
Credit Points 6

UNITS COVERED

- Working with Images,
Graphics and Sound

HOURS OF LEARNING

90



CAMPUS
Cardonald

ATTENDANCE PATTERN

Thursday
9.30am - 12.00pm

COURSE AWARD

SCQF Level 2/3
Credit Points 6

UNITS COVERED

- Creating materials for display

HOURS OF LEARNING

99

Creative Arts

Course Outline

*** This course is predominately aimed at students from non-mainstream educational establishments and specialist units who have a learning disability/autism and require additional support with their learning ***

This course will give you the chance to try three subjects – art, photography and performance. You will have 12 weeks in each class where you will learn how to to capture, edit and create media presentations.

You will also experience and develop a range of creative techniques and activities and develop artwork from ‘self-directed’ resources and interests to a complete piece of artwork.

Students will participate in a variety of drama based activities including role play, mime, movement, improvisation and character building. These activities are used as a vehicle to develop confidence, self-esteem, creativity and skills in working with others.

Course Entry Requirements

- An interest in creative arts
- Be willing to participate in all three subject areas

Progression Pathways

Full time college courses

Employment Routes

Creative or performance industry.

Course Outline

*** This course is predominately aimed at students from non-mainstream educational establishments and specialist units who have a learning disability/autism and require additional support with their learning ***

Have you ever fancied creating your own superhero or comic characters, inventing stories and creating your own comic using a computer?

If so, the Creative Comics course is for you.

You will be developing your own characters using computer programs. The course will encourage you to write exciting stories using your imagination. The skills you will develop include literacy, creative thinking, ICT and project working.

Course Entry Requirements

- Student must be working at National 2 in most subjects or at Nationals 3
- Students should have a good grasp of literacy and IT skills to attend this course.

Progression Pathways

This experience will give you a positive introduction to college, with the possibility of moving on to further college courses.

Employment Routes

Working in design and comic creation roles.



CAMPUS
Langside

ATTENDANCE PATTERN
Wednesday
9.30am - 12.00pm

COURSE AWARD
SCQF Level 3
Credit Points 6

UNITS COVERED
• College design unit

HOURS OF LEARNING
99

Level 4 - 7



CAMPUS
Eastend

ATTENDANCE PATTERN

Tuesday and Thursday
1.30pm - 4.00pm

COURSE AWARD

SCQF Level 4
Credit Points 4

UNITS COVERED

- Shampooing
- Blow drying
- Curling Techniques
- Hair-up
- Current Creative Hair Trends

Transferable Skills:

- Digital skills: Microsoft Teams and One Note
- Introduction to Social Media for Hair/Beauty
- Health and Safety
- Customer Service
- Working as part of a Team

HOURS OF LEARNING

150

Current Trends in Hairdressing

Course Outline

An introductory course designed for people with a passion for Hairdressing.

This course is for aspiring Hairdressers or those wishing to improve their skills and learn the basics of Hairdressing. Through practical workshops you will be introduced to the basic skills and creative techniques used by professional Hairdressers to produce current looks inspired from Instagram Trends.

Additionally, the creation of an online Folio will provide the opportunity to develop your Digital Skills.

Course Entry Requirements

You must have a keen interest in Hairdressing, you will be required to work on classmates so you must be prepared to carry out treatments and be a model for classmates.

Progression Pathways

- SVQ 2 Hairdressing

Employment Routes

Following completion of further training you can be employed in a Hair Salon, Cruise ship or you may wish to be self-employed.

Course Outline

Ever wondered what happens to your old computer when it's tossed aside for a newer model? What if you could bring those "outdated" systems back to life and make them run like new again? Or better yet, imagine building your own computer from scratch, choosing every part, assembling it, and watching it come to life!

Welcome to Computer Refurbishment, Setup, and Recycling, where you'll learn the skills to revive old machines, build powerful new systems, and reduce e-waste while saving money. Whether you're passionate about technology, looking to gain valuable hands-on skills, or just want to learn how to make your computer run better, this course has something for you.

Course Entry Requirements

You must have a clear interest in the subject area along with:

- Basic IT Knowledge

Ideal students will be in S4, 5 or 6

Progression Pathways

On successful completion of this course, you will have the opportunity to be treated as an internal applicant. This will also be dependent on your attendance and commitment to this course. You could progress on to one of the following full-time programmes:

- NQ Computer Fundamentals Level 5
- NC Software Development Level 6
- NC Cyber Security Level 6
- NC Web Development with Emerging Technologies Level 6
- NQ Computing and Esports Level 6

Employment Routes

TBC



CAMPUS
Anniesland

ATTENDANCE PATTERN
Tuesday and Thursday
1.30pm - 4.00pm

COURSE AWARD
SCQF Level 4
Credit Points 12

UNITS COVERED

- Refurbishing and Recycling a Computer
- Setting up a Computer

HOURS OF LEARNING
160

CAMPUS
Cardonald

ATTENDANCE PATTERN

Tuesday and Thursday
1.30pm - 4.00pm

COURSE AWARD

SCQF Level 4
Credit Points 24

UNITS COVERED

- Working with Customers and Colleagues

Cosmetology:

- Product Awareness
- Career Options and Choices
- Prepare and Assist in a Workplace Environment
- Hairdressing - Practical Skills
- Health and Safety

You will also have the opportunity to learn:

- Long hair styling
- IT Skills

HOURS OF LEARNING

155

NPA Cosmetology

Course Outline

Express your creativity in Hairdressing by completing this National Progression Award. Part of learning skills in the field of Hairdressing is appreciating the health and safety implications for any treatments as well as understanding the effects of treatments.

This is an exciting, practical course which will give you an ideal launchpad for a career in this industry. Whilst this class is practical in nature, you must also complete some written work in the form of a workbook, as well as a portfolio and short tests. Emphasis is placed upon employability skills and aptitude of the industry to prepare you for the workplace and further study. You will be expected to complete some home study to consolidate your learning.

Course Entry Requirements

You must have:

- have National 4 Maths and/or English
- a keen interest in the hair industry, be able to work as part of a team and have a caring approach.

You will be required to work on each other, so you must be prepared to apply and model shampoo techniques, and other treatments. Ideal students will be in S5/6.

Progression Pathways

On successful completion of the course along with good attendance and commitment to this course, you will be given the opportunity of internal progression on to one of the following courses:

- National Certificate (NC) or National Qualification (NQ) course in Hairdressing, Barbering, Make- up Artistry, or Beauty Therapy

Depending on other qualifications, you could go on to a

- Higher National Certificate (HNC) in Hairdressing, Beauty or even Make-up Artistry

Employment Routes

You might go on to a Modern Apprenticeship, leading to a Scottish Vocational Qualification (SVQ) Levels 2 & 3 in Hairdressing, Barbering. Apprenticeships usually last for two years. With relevant work experience, you can be employed as a salon stylist, Barber, with further opportunities for career progression, as salon manager or even a salon owner.

Course Outline

This course will give you a good introductory understanding and basic skills for the beauty industry. The focus of this qualification is on practical skills, and you will develop an awareness of Health and Safety procedures in a salon.

This is a practical class and will include close contact, working on classmates to perfect a range of skills including skin cleansing, nail artistry, make up application and back, leg and facial massage. Sessions are designed to ensure you develop both vocational skills and the knowledge and understanding required for the beauty industry.

You are required to work on each other and must be prepared to give and receive massage treatments, remove make up to have make up reapplied and participate in skin care.

Course Entry Requirements

You must have a keen interest in beauty therapy and complementary therapies; enjoy working as part of a team and have a caring, mature approach along with:

- National 4 Maths and/or English
- Ideal students will be in S5 or 6

Progression Pathways

On successful completion of the course along with good attendance and commitment, you will be given the opportunity of internal progression on to one of the following courses:

- NQ Level 5 Beauty Care and make-up
- NQ level 6 Beauty care

Alternatively, you might go on to do:

- Level 2 or 3 diploma in Complementary Therapies
- National Certificate & Higher National Diploma in Beauty Therapy or Make Up Artistry.

The level you might enter would depend on the level and relevance of your other qualifications

Employment Routes

You can be employed in a beauty salon, spa, cruise ship or nail bar.



CAMPUS
Langside

ATTENDANCE PATTERN
Tuesday and Thursday
1.30pm - 4.00pm

COURSE AWARD
SCQF Level 4
Credit Points 24

UNITS COVERED
National Progression Award in
Beauty Skills: An Introduction -
SCQF Level 4.
Mandatory Units:

- Cosmetology: Make Up
Artistry Practical Skills
- Beauty Skills: An Introduction
- Creative Finishes to Hand and
Foot

Optional Units (chosen by the
college)

- Fashion Make-Up
- Introduction to Face and Back
Massage
- Introduction to Traditional
Head Massage

HOURS OF LEARNING
160



Course Outline

This course allows you to explore the disciplines of Hairdressing, Beauty and Make-up Artistry whilst building real world skills in our state-of-the-art salon environment.

You'll learn how to perform professional shampooing and conditioning treatments, and how to effectively detangle, section, secure and control hair. As an introduction to the industry, you'll get to experience, consider the benefits of, and learn how to perform a variety of beauty therapy treatments.

You'll have the opportunity to express your creativity, build your confidence and develop transferable skills, such as customer service and teamwork, that are valued in the workplace. You will discover how to create a variety of shapes and styles on hair using the appropriate tools and equipment. You'll explore and interpret your own individuality and style before planning and preparing a style on a mannequin head.

This course is enhanced by events and additional training opportunities with our key industry partners.

Course Entry Requirements

This course would suit creative, collaborative and communicative team players who are open to learning new skills and techniques. Students should hold two National 4's and have a genuine interest in the Hair, Beauty of Make-up Artistry sector.

Progression Pathways

Successful completion of this course will allow you to progress onto further qualifications at NQ Level 5 and 6, leading through to a Hairdressing HNC, a Beauty Therapy HND or an HND in Make-up Artistry for TV, Film and Theatre.

Employment Routes

This is a vibrant and popular sector of the economy. Prior to the pandemic, there were 45,000 salon business. Barbers, beauty salons and nail salons were the top three retail categories that saw the highest growth. Modern Apprenticeships are available in Hairdressing and Barbering.

CAMPUS

City

ATTENDANCE PATTERN

Tuesday and Thursday
1.30pm - 4.00pm

COURSE AWARD

SCQF Level 4
Credit Points 24

UNITS COVERED

- Hairdressing Practical Skills
- Beauty Therapy Practical Skills
- Make-up Artistry Practical Skills
- Product Awareness
- Health and Safety
- Creativity

HOURS OF LEARNING

155

CAMPUS

City

ATTENDANCE PATTERN

Tuesday and Thursday
1.30pm - 4.00pm

COURSE AWARD

SCQF Level 5
Credit Points 24

UNITS COVERED

- Design & Manufacture: Design
- Design & Manufacture:
Materials & Manufacturing

HOURS OF LEARNING

155

Design & Manufacture

Course Outline

This course allows you to explore the multi-faceted world of product design and manufacturing. Creativity is at the heart of this course and its combination with technology makes it exciting and dynamic.

Design and Manufacture provides you with skills in designing and communicating design proposals, allowing you to refine and resolve your design ideas effectively. The course stresses the integration of designing and making, highlighting the close relationship between designing, making, testing, and refining design ideas. This course provides a broad practical introduction to design, and materials and manufacturing processes.

You will develop design skills, as well as skills in making models, prototypes and products. And, you will look at the life cycle of a product; from idea through design, manufacture, and use, including its disposal or re-use. You will learn to appreciate the tensions that exist between factors such as aesthetics, function, economics and the environment.

Course Entry Requirements

This course is suitable for students who are interested in design and model making and who have an artistic, creative, or technical skillset.

- Students should hold three National 4 Qualifications, including English and Art & Design.

Progression Pathways

Graduates of this course will have developed an understanding of the design process and could progress into courses across the design department including Model Making for TV & Film, Product Design and Furniture Design.

Employment Routes

Completion of this course could be your first step towards a career in product design. With further study you could work in a range of fields including Model Making for TV and Film, Product Design and Furniture Design.

Course Outline

Esports (Electronic Sports) is one of the fastest growing professional sports in the world with the industry evolving from niche gaming tournaments into a global phenomenon. Revenue from this market is expected to grow from \$1.4 billion to \$2.1 billion in 2026. Our NPA in esports provides learners with the knowledge and skills needed to understand the principles and practices of esports, as well as the ability to organise and manage esports events. The course covers a range of topics including the history of esports, the different types of esports, the various roles within the esports industry, and the business and commercial aspects of esports.

The NPA in esports also includes practical elements such as game analysis, event management, and live broadcasting. This qualification is aimed at individuals who have an interest in esports and are looking to gain a deeper understanding of the industry or to develop their skills in event management or broadcasting. It is also ideal for students who are considering careers in the esports industry.

We have a dedicated space designed specifically for gaming and esports. It is equipped with gaming PCs, comfortable seating, and all the necessary peripheral devices such as gaming keyboards, mice, and headphones to ensure an enjoyable course.

Course Entry Requirements

You must have:

- Enthusiasm for the Esports industry
- Core ICT Skills
- Nat 4 English and Maths
- Ideal students will be in S5/6

Progression Pathways

On successful completion of this course, you will have the opportunity to be treated as an internal applicant. This will also be dependent on your attendance and commitment to this course. You could progress on to the following full-time programme at Glasgow Clyde College:

- NQ Computing and Esports (Level 6)
- Entry into the esports industry.

The entry point (level you would study) would be dependent on the level and relevance of your other qualifications.



CAMPUS
Cardonald

ATTENDANCE PATTERN
Tuesday and Thursday
1.30pm - 4.00pm

COURSE AWARD
SCQF Level 5
Credit Points 18

UNITS COVERED
NPA Esports at SCQF Level 5

- The Esports Industry
- Game Performance
- Organising & Promoting Events

HOURS OF LEARNING
155

CAMPUS

City

ATTENDANCE PATTERN

Tuesday and Thursday
1.30pm - 4.00pm

COURSE AWARD

SCQF Level 5
Credit Points 36

UNITS COVERED

- Manufacturing Techniques:
An Introduction
- Marking Out
- Piercing
- Soldering
- Working with Wire
- Polishing

HOURS OF LEARNING

155

Introduction to Jewellery Arts & Technology

Course Outline

This course will teach you a comprehensive range of skills in Jewellery Design, with a design-led focus. You will be encouraged to develop your own creative ideas and will be taught how to translate these ideas into finished, 3D pieces of jewellery.

Students will learn the basic creative and technical skills needed by jewellers, including introductory manufacturing techniques in a variety of materials.

There is a strong ethos of ethical making and sustainability, which will be embedded into your learning. The qualification also meets the National Occupation Standards for employers.

Course Entry Requirements

This course would suit students who are interested in Art and Design and who wish to work in an exciting medium. Students should have or be working towards National 5 English and an Art or Craft/Design subject.

Progression Pathways

Graduates of this course can progress through a variety of Design programmes at City including Jewellery Arts and Technology NQ (Level 6), HNC and HND Applied Arts.

Employment Routes

This course could lead to a career in Jewellery production including Bench Jeweller, Jewellery Designer and self-employed artist. The qualification also meets the National Occupation Standards for employers.





Course Outline

Studying in our industry standard studios, this course gives you the opportunity to explore the skills in radio and podcasting production.

Whether you want to be a presenter or a producer, you will develop skills in programme development, preparing content for online and broadcast distribution and microphone presentation skills. You will have the chance to broadcast live on our dedicated CityRadio station.

Working collaboratively, you will create podcasts and programmes that showcase your skills and detail your experience.

As more podcasts are appearing on YouTube, our new robotic cameras will capture your podcasts as you make them, ready to be published on video and audio platforms

Course Entry Requirements

This course would suit imaginative, technically minded, and inventive students who are keen to expand their skills and have a genuine interest in radio or podcast production.

Students are expected to have, or be working towards, National 5 English.

Progression Pathways

Graduates of this course can progress onto programmes within the Creative Industries faculty including Radio, Television, Journalism and Media.

Employment Routes

Over the past decade, podcasts have become one of the most popular forms of audio entertainment in the UK. Podcasts are still most widespread among young audiences, with close to 40 percent of UK listeners aged 26 to 35 listening to podcasts on a weekly basis.

With further qualifications and experience you could work in radio or podcasting as a Presenter, Producer or Engineer.

CAMPUS

City

ATTENDANCE PATTERN

Tuesday and Thursday
1.30pm - 4.00pm

COURSE AWARD

SCQF Level 5
Credit Points 24

UNITS COVERED

- Radio Journalism
- Radio Interviewing
- Presenting for Radio and Television
- Making a Radio Programme

HOURS OF LEARNING

155

CAMPUS

City

ATTENDANCE PATTERN

Tuesday and Thursday
1.30pm - 4.00pm

COURSE AWARD

SCQF Level 5
Credit Points 24

UNITS COVERED

- Sound Recording for Single Camera
- Directing a Single Camera Production
- Basic Video Editing
- Basic Video Camera Operations

HOURS OF LEARNING

155

NPA Television Production

Course Outline

This practical, hands-on course is designed to introduce you to the skills of Television Production and to provide a pathway to further study.

Working with experienced industry professionals who are keen to share their expertise with the next generation of screen talent, you'll gain experience in camera operations, sound, directing and editing.

Using industry standard equipment and resources you will learn to produce and create your own short television programme.

Due to collaborative and creative nature of this course, you will develop skills in in working with others, problem solving and communication.

Course Entry Requirements

This course would suit imaginative, technically minded, and inventive students who are keen to expand their skills and have a genuine interest in Television production. Students are expected to have or be working towards National 5 English.

Progression Pathways

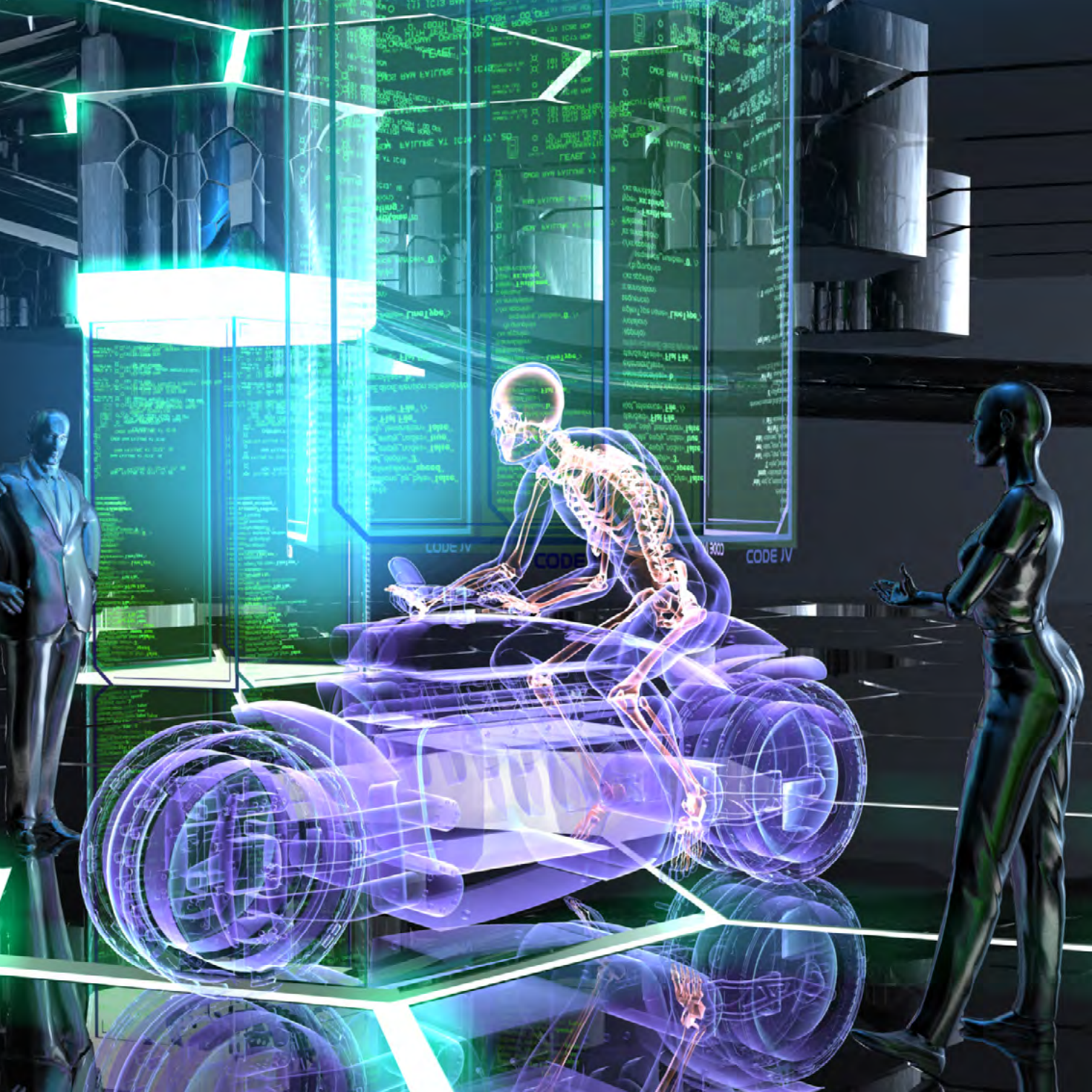
Successful completion of the NPA enables students to progress to a host of courses within the Creative Industries faculty including Television, Radio, Journalism and Media.

Employment Routes

Television Production in Scotland is booming with spending figures for film and TV creation having risen to the highest level since records began. Studios have recently opened in Leith, Cumbernauld and Bathgate, and Glasgow's Kelvin Hall.

With further qualifications you could work in this exciting and expanding sector in roles such as Camera Operator, Editor, Sound, Design and Production.





Course Outline

This course will introduce you to the genres, trends and emerging technologies at the cutting edge of the computer games industry.

You will explore about core concepts such as design, media assets and development. Working with the latest software programs, you'll learn about digital planning & design, creation of media assets, and development & testing, which are important techniques for working in Games Development.

As well as improving your computational thinking skills, the course will also help you to develop employability skills and core skills through collaborative enterprise activities.

Course Entry Requirements

This course would suit creative and collaborative gamers with critical thinking skills. We are particularly keen to receive applications from students who can code.

Students wishing to progress further in Games Development would preferably have Maths and Computing qualifications at Nat 5 level or above.

Progression Pathways

Studying the Computer Games Development NPA will give you access to multiple progression pathways. Depending on your skills and other qualifications, you can choose to progress in Computer Games Development, Web Design or 3D Computer Animation.

Employment Routes

Scotland has a world renowned and growing computer games industry, with almost 100 companies working in this sector in 2021. The pandemic has resulted in increased demand for new games and tech roles are currently in high demand.

With appropriate additional qualifications and/or University study you could work in Games Development, Software or Web Development.

CAMPUS

City

ATTENDANCE PATTERN

Tuesday and Thursday
1.30pm - 4.00pm

COURSE AWARD

SCQF Level 6
Credit Points 18

UNITS COVERED

Computer Games:

- Design
- Media Assets
- Development

HOURS OF LEARNING

155



CAMPUS
Langside

ATTENDANCE PATTERN

Tuesday and Thursday
1.30pm - 4.00pm

COURSE AWARD

SCQF Level 6
Credit Points 18

UNITS COVERED

National Progression Award in
Cyber Security SCQF level 6:

- Data Security
- Ethical Hacking
- Digital Forensics

HOURS OF LEARNING

155

Cyber Security

Course Outline

The National Progression Award in Cyber Security provides foundation knowledge and skills in data security, digital forensics, and ethical hacking – providing a skills pipeline into the Cyber Security industry.

This course is designed to raise awareness of Cyber Security and highlight the current skills gap in this field.

You will learn how to improve your cyber hygiene and resilience, and enable you to identify security vulnerabilities safely, legally, and ethically. It will also help you to contribute more safely to virtual communities. This course will prepare you for further studies and future employment in this area.

Course Entry Requirements

You must have a clear interest in the subject area along with:

- 3 passes at National 5, one of which should be Maths
- Ideal students will be in S5/6

Progression Pathways

On successful completion of this course, you will have the opportunity to be treated as an internal applicant. This will also be dependent on your attendance and commitment to this course. You could progress on to the following full-time programme at Glasgow Clyde College:

- Higher National Certificate/Diploma (HNC/D) Software Engineering with Emerging Technologies,
- Higher National Certificate/Diploma (HNC/D) Infrastructure with Cyber Security

The entry point (level you would study) would be dependent on the level and relevance of your other qualifications. After studying the HND (Higher National Diploma) Cyber & HND Infrastructure, Glasgow Clyde has a pathways programme to BSc Year 3 Entry to Glasgow Caledonian University for Cyber & Networking.

Employment Routes

Entry level jobs and training, including Modern Apprenticeships in the computing industry.

Course Outline

Hundreds of millions of people stream e-sports events every year. This innovative course introduces this exciting and growing industry – with Scotland set to open its first e-sports arena in 2024.

You will explore all aspects of esports: from how the sector developed to the future of the industry; the variety of careers available to the organisation of the esports industry. Working in our specialised computer labs, you'll examine software and hardware and discover how to improve their performance during competitive gaming sessions.

You'll have the opportunity of putting your skills to the test by planning and promoting your own esports event. You'll practice how to find the right venue, obtain sponsorship and create a budget. You'll develop your branding and marketing skills before promoting the event via social media. Finally, you will run and live stream your event.

Course Entry Requirements

This course would suit creative, collaborative and computer-savvy individuals who have a genuine interest in working in this industry. You should hold 3 National 5's in relevant subjects.

Previous knowledge relating to planning, preparing, hosting and evaluating events is advantageous but not essential.

Progression Pathways

Studying the Esports NPA will give you access to multiple progression pathways. Depending on your skills and other qualifications, you can choose to progress in a range of areas, including Computer Games Development, Marketing Communications or International Events.

Employment Routes

Scotland has a world renowned and growing computer games industry, Esports is going to play an increasingly important role within this sector.

There are many job roles in the e-sports sector including: Professional player, coach or manager; Event Host, Referee or Observer; Journalist, Broadcast producer or Social Media Manager; Influencer, Streamer or Content Creator.

CAMPUS

City

ATTENDANCE PATTERN

Tuesday and Thursday
1.30pm - 4.00pm

COURSE AWARD

SCQF Level 6
Credit Points 18

UNITS COVERED

- The Esports Industry
- Game Performance
- Organising & Promoting Events

HOURS OF LEARNING

155

CAMPUS

City

ATTENDANCE PATTERN

Tuesday and Thursday
1.30pm - 4.00pm

COURSE AWARD

SCQF Level 6
Credit Points 18

UNITS COVERED

- Art and Design:
Software Skills
- Art and Design: Introduction
to Graphic Design
- Two-Dimensional Design -
The Design Process

HOURS OF LEARNING

155

Graphic Design

Course Outline

Graphic Design combines Art, Communication and Technology. Through this introductory course you will explore Graphic Design across a series of practical and creative projects. The emphasis will be experimentation and creativity, introducing you to working with images and letterforms in a fun and engaging way.

You will follow several design briefs covering subjects including: researching styles and trends, exploration of different ideas and media, branding through logos, advertising, layout and typography. As well as working in your sketchbook, you'll be creating work on Adobe software, specifically Photoshop and Illustrator.

Course Entry Requirements

This course would suit imaginative and creative students who hold National 5 English and Art & Design, or other relevant national qualifications at SCQF Level 5.

Progression Pathways

At the end of the course you will have built a small folio of highly creative graphic design work and may apply for full-time study at either NQ or HN level. This folio might also support applicants applying to art school or University.

Employment Routes

With further qualifications in Graphic Design, you'll have multiple options open to you. You could work as a Design Assistant, Photo Editor or Graphic Designer in innovative and evolving industries like Television, Advertising & Marketing, Social Media or Web Design.





CAMPUS
Cardonald

ATTENDANCE PATTERN
Tuesday and Thursday
1.30pm - 4.00pm

COURSE AWARD
SCQF Level 6
Credit Points 30

UNITS COVERED

- Creative Industries: An Introduction - Scotland
- Creative Industries: Understanding a Creative Brief
- Media: Understanding the Creative Process
- Storytelling for the Creative Industries

HOURS OF LEARNING
155

Media & Content Production

Course Outline

This exciting and practical course will prepare you for a role as a content producer in the media industry.

You will learn how to create a podcast, produce short videos for various platforms, and learn how to create still and animated adverts to post on websites and social media platforms.

You will also begin to understand how media is used as an advertising and marketing tool. The main aim is to show how companies can market and advertise their products to audiences using a variety of platforms and methods.

This one-year course is designed to be very practical, which means there will be a hands-on approach to learning. Tasks will be created around briefs set by lecturers (who work in the sector) to provide a realistic representation of what it is like to work in the media industry.

Course Entry Requirements

You must:

- Have achieved 4 National 5s (grade A-C) one of which must be English.
- Be capable of working at SCQF Level 6 (Higher) English

Having previous experience of subjects related to creative industries e.g. art and design or media would be advantageous but not necessary.

Ideal students will be in S5/6

Progression Pathways

Successful completion of this course will lead to an unconditional place on the HND Media and Communication, HND Digital Film and Television or HND Journalism and Content Production course.

Employment Routes

The first level jobs across Scotland's Creative Industries that you can work toward include Production Assistant, Content Assistant, Junior Creative Assistant, Junior Copywriter, Research Assistant, Camera Assistant, Creative Tech Assistant, Marketing Assistant, Digital Design Assistant, Graphic Design Assistant, Assistant UX Developer and others.

Course Outline

This course takes account of the knowledge and skills required by people who have a real interest in musical theatre and wish to enter future employment in that area or; continue to study performance in further and higher education.

In this course you will learn about and develop techniques in expression and communication to an audience, and about theatre arts and performance.

Course Entry Requirements

This course will be of particular interest and benefit to students who already have successfully achieved a pass in National 5 Drama and who have a keen interest in developing their skills in singing, acting and performance.

An informal audition will take place during the first week which will take the form of a performance of one short age-appropriate monologue and song.

Progression Pathways

Along with relevant National 5 passes (C grade or better), this could lead to the full-time.

NC Acting and Performance. Along with relevant Higher passes (C grade or better) this could lead to the full-time HND Acting and Performance.

Employment Routes

- Professional performer
- Teaching
- PR
- Events



CAMPUS
Springburn

ATTENDANCE PATTERN
Tuesday and Thursday
1.30pm - 4.00pm

COURSE AWARD
SCQF Level 6
Credit Points 24

UNITS COVERED

- Acting through song
- Solo or group singing skills
- Group dance performance

HOURS OF LEARNING
150

CAMPUS
Anniesland

ATTENDANCE PATTERN
Tuesday and Thursday
1.30pm - 4.00pm

COURSE AWARD
SCQF Level 6
Credit Points 18

UNITS COVERED
Computer Games:

- Design
- Media Assets
- Development

HOURS OF LEARNING
155

NPA Computer Games Development

Course Outline

Do you have an interest in the games industry?

This award is an introductory qualification which is designed to teach you how to create computer games from scratch. This course consists of three topics: design, media assets, and development. Design focuses on planning every aspect of your game from the plot and the gameplay to characters and sound effects.

Media assets will teach you to find and create sounds, images and animations you can use within your game. Development will help you write the code to bring your game to life.

Course Entry Requirements

You must have a clear interest in the subject area along with:

- National 4 Maths and/or English
- Or if S4 working towards National 4 Maths and/or English

Ideal students will be in S4, 5 or 6

Progression Pathways

On successful completion of this course, you will have the opportunity to be treated as an internal applicant. This will also be dependent on your attendance and commitment to this course. You could progress on to one of the following full-time programmes:

- HNC Computing
- HND Software Engineering with Emerging Technologies
- HND Web Development
- HND Cyber Security
- HND Infrastructure with Cyber Security

Employment Routes

Foundation or Modern apprenticeships or any job requiring basic IT skills.

Course Outline

This introductory course in Cyber Security will provide you with base knowledge and skills in data security, digital forensics and ethical hacking.

Taking ethical, legal and professional considerations into account, you will create a data security policy for a professional organisation, and justify your policy decisions based on best practice.

You will learn how to conduct a digital forensics examination. You will investigate digital devices and media to secure evidence, before reconstructing, analysing and interpreting the data and create an investigative report.

You will examine the tools and techniques used by both ethical and malicious hackers. You will consider the potential threats and mechanisms that can be leveraged by malicious hackers to target individuals and organisations. You will explore how ethical hacking can help identify and mitigate these threats, and try out some of the techniques and technologies used to defend systems from attack.

Course Entry Requirements

This course would suit inquisitive, systematic and computer savvy students who are keen to develop their problem-solving skills. Students are expected to have English and Computing Science at National 5 (or National 5 Mathematics\ Physics).

Progression Pathways

Following successful completion of the NPA you can progress through HNC & HND to degree level qualifications in Universities across Scotland. Technical Apprenticeships in Information Security are also available.

Employment Routes

Cyber security is one of the fastest evolving areas within business and government today as online systems make up the foundations of the digitally enabled economy.

Employment opportunities in Cyber security are predicted to increase fivefold in the next two years and there is already a shortage of people who can work in this field.



Course Outline

The National Progression Award (NPA) in Professional Theatre Preparation offers you the opportunity to develop your skills in acting. This course will provide the knowledge and skills and resources that may be called upon when preparing for interviews and auditions, for entry to drama courses and/or the theatre or performing arts profession.

Course Entry Requirements

You must have a clear interest in the subject area along with:

- English Nat 5

It would be advantageous to have had previous experience of drama, theatre groups, acting clubs or equivalent. Ideal students will be in S5 or 6

Progression Pathways

On successful completion of this course, you will have the opportunity to be treated as an internal applicant. This will also be dependent on your attendance and commitment to this course. You could progress on to the following full-time programmes:

- NC Acting and Performance (Level 6)
- Higher National Certificate (HNC), Higher National Diploma (HND)

The level you might enter would depend on the level and relevance of your other qualifications

Employment Routes

Employment opportunities after training such as, lighting technician, actor, prop maker, scenic artist, set designer, stage manager, stage hand, or wardrobe assistant.



CAMPUS
Langside

ATTENDANCE PATTERN
Tuesday and Wednesday
1.30pm - 4.00pm

COURSE AWARD
SCQF Level 6
Credit Points 18

UNITS COVERED
National Progression Award in
Professional Theatre Preparation
SCQF Level 6:

- Preparation for Audition
- Drama: Acting Skills
- Creative Project

Also one mandatory unit:

- Preparation for Audition

HOURS OF LEARNING
155

CAMPUS

City

ATTENDANCE PATTERN

Tuesday and Thursday
1.30pm - 4.00pm

COURSE AWARD

SCQF Level 6
Credit Points 4

UNITS COVERED

- Technical Theatre Workshop Skills
- Theatre Stage Model Set Construction
- Theatrical Prop Making

HOURS OF LEARNING

155

Set Design, Prop & Model Making for Film & TV

Course Outline

Film and Television production in Scotland is booming with production spend figures rising to their highest ever levels - now is the perfect time to consider a career in this thriving industry.

This course will introduce you to the world of production design for film and television. Working collaboratively to a given brief, you'll learn how to interpret and produce scale plans, before building a scale model of the set.

Having had the opportunity to research methods and designs, you will use a range of materials and construction methods to create props. This course will be enhanced with visits from industry professionals and opportunities to visit television studios and production facilities.

Course Entry Requirements

This course would suit artistic, creative and collaborative students with National 5 Qualifications including English and Art & Design. This course requires a high level of commitment from students with a genuine interest in pursuing a career in design, film or television.

Progression Pathways

By the end of this course you will have developed an understanding of the design and construction process and could progress into courses across the design department including Model Making for TV & Film, Product Design or Furniture design.

Alternatively, you could progress onto courses within the Creative Industries faculty including Television, Radio and Media.

Employment Routes

Completion of this course could be your first step towards a career in television production and design. With further study you could work in a wide variety of roles including Film and TV Model or Prop Making, Set Dressing or Set Design.

Course Outline

On this practical programme, you will train with our industry experienced performing arts faculty. Our faculty will work with you to develop your Acting, Voice and Movement disciplines to prepare you for transition into the industry in a variety of capacities. If you are passionate about working as a Stage Actor, Film/TV Actor, Physical Theatre Actor, Voiceover Artist, Teacher/Educator, Professional & Community Theatre practitioner, we would encourage you to apply.

The Performing Arts faculty at Kelvin work closely with Platform Theatre, where some of our bi-annual productions are staged. Furthermore, we collaborate with industry professionals who will deliver industry relevant workshops, providing you with current industry insights and connections. Our graduates articulate on some of the most renowned Schools and Conservatoire programs in the U.K. Our graduates also go on to work in a variety of professional capacities ranging from Community Arts through to Performing in West End productions.

This course is highly practical and physically demanding, with activities such as conditioning work, partnering, contact based work, lifting, supporting and intensive movement work integral to the curriculum. If you are passionate about a career in Acting and dedicated to honing your techniques, we invite you to apply for this full-time programme and join our thriving performing arts community

Course Entry Requirements

Students must have a minimum of 1 Higher preferably in English or Drama. Alternatively, successful completion of an NC or NQ Acting program will also be considered. Entry onto the course is by audition. The audition process will require you to take part in a group workshop session, which will involve a selection of Acting, Voice and Movement exercises. Please note, this program is highly practical & physical by nature.

Progression Pathways

You can progress onto further study at HND and BA level, with UHI Perth, at Kelvin or a wide range of other Universities.

Employment Routes

You can transition into the Acting industry in a range of capacities including, but not exclusively; Stage Acting, Production, Film/TV Acting, Writing, Directing, Physical Theatre, Community Theatre, Education and Arts Facilitator.

www.glasgowkelvin.ac.uk



CAMPUS
Easterhouse

ATTENDANCE PATTERN
Tuesday and Wednesday
9.00am - 4.00pm

COURSE AWARD
SCQF Level 7
Credit Points 24

UNITS COVERED

- Stage Acting studies.
- Movement studies
- Voice studies
- Film & TV Acting studies
- Production & Performance studies
- Devising Theatre studies.
- Professional Development & Etiquette
- Live Performance

HOURS OF LEARNING
270



Food, Drink, Tourism and Leisure Industries

Level 1 - 3



CAMPUS
Cardonald

ATTENDANCE PATTERN
Wednesday
1.00pm - 3.30pm

COURSE AWARD
SCQF Level 2
Credit Points 9

UNITS COVERED
• REHIS Introduction to Food

HOURS OF LEARNING
90

Baking

Course Outline

*** This course is predominately aimed at students from non-mainstream educational establishments and specialist units who have a learning disability/autism and require additional support with their learning ***

Are you a budding baker interested in developing your knowledge and skills to work in the food industry or bake at home?

Students will learn to produce a range of bakery products including cakes, brownies, muffins, cookies, scones and biscuits, while practicing skills and developing knowledge required for the food industry:

- Good food safety and hygiene practices
- Working as part of a team
- Presentation of food
- Employability skills
- Food and customer service

Course Entry Requirements

Students need to be working at a minimum of national 2 in a variety of subjects, with the potential of working at national 3. All students should be in Senior Phase in school and have a keen interest in practical cookery and baking.

Student's personal hygiene must be of high standard, and they must be prepared to follow guidance in the kitchen
Students will be asked to participate in an appropriate selection event.

Progression Pathways

- Skills for Life & Work at Level 2 or 3

Employment Routes

Future employment in a foodservice setting, for example: cafes, bistros, restaurants and bakeries.





Course Outline

*** This course is predominately aimed at students from non-mainstream educational establishments and specialist units who have a learning disability/autism and require additional support with their learning ***

This course is designed to give students a realistic experience of working in a café.

Set within the School of Additional Support for Learning students work in a café in the college.

Students get to develop and practice a range of skills required to gain future employment in the hospitality sector - such as the presentation of food for sale, customer service skills, setting-up and cleaning down a café, the practical application of food hygiene, working as part of a team and other activities associated with running a café.

Course Entry Requirements

- Students need to be working at national 2 in a variety of subjects, with the potential of working at national 3.
- They must have an interest in working in the hospitality industry and it would also be an advantage to have completed some food preparation units.
- Students will be asked to participate in an appropriate selection activity.

Progression Pathways

- Skills for Life & work at Level 2 or 3

Employment Routes

- Working in a hospitality setting - café, restaurant



CAMPUS
Cardonald

ATTENDANCE PATTERN
Tuesday
9.30am - 12.00pm

COURSE AWARD
SCQF Level 2/3
Credit Points 9

UNITS COVERED
• Business in Practice:
Customer Care

HOURS OF LEARNING
90

CAMPUS

City

ATTENDANCE PATTERN

Monday

9.30am - 2.30pm

COURSE AWARD

SCQF Level 3

Credit Points 24

UNITS COVERED

- Food Hygiene for the Hospitality Industry
- Organisation of Practical Skills (OPS)
- Craft Baking; An Introduction
- Introduction to Food Preparation Techniques
- Introduction to Cookery Processes

HOURS OF LEARNING

155

NPA Professional Cookery

Course Outline

*** This course is predominately aimed at students from non-mainstream educational establishments and specialist units ***

This collaborative course is the perfect opportunity to learn the basics from experienced chefs in our industry standard Kitchens.

You'll discover how to prepare, cook and serve a variety of dishes. You'll practice using a range of kitchen equipment and be introduced to a variety of cookery processes and develop an understanding of how to cook different foods to create your own delicious dishes.

All activities will be carried out in purpose built professional kitchens and students will be expected to comply fully with all health & safety and food hygiene legislation.

Course Entry Requirements

No formal entry requirements however all students should be in Senior Phase in School and have a keen interest in the subject area.

Students should be aware that classes are conducted in a Kitchen environment where safety is a key priority.

Progression Pathways

This course offers multiple progression routes, either towards employment or for further study. You can continue to study Professional Cookery or Bakery at City, from a Level 4 Senior Phase course through NQ at Level 5 through to Professional Cookery HND at Level 8.

Employment Routes

Recent events have resulted in increased opportunities in the Hospitality and Tourism Sectors. This course is an ideal first step towards a career in a professional kitchen, be it in a Pub, Hotel or Restaurant.

Course Outline

*** This course is predominately aimed at students from non-mainstream educational establishments and specialist units ***

The course is designed to introduce students to how to prepare, cook and serve different foods. Students will be taught how to prepare a number of sweet and savoury dishes. Students will be taught a number of skills including: slicing, grating, chopping, blending, etc...

Students will work in a friendly and supportive environment. Students will be guided to understand the functioning of a safe and hygienic kitchen environment.

The course is aimed at Students who have an interest in cooking. Students will be expected to follow basic instructions and food hygiene in the kitchen.

Students will also gain REHIS Food Hygiene Certification.

Course Entry Requirements

Students should show a keen interest in cooking. No formal qualifications are necessary but students should be enthusiastic about working with food and be prepared to follow guidance in the kitchen.

Students should be working at Level 3 in Literacy and Numeracy (there are some written elements to the course)

Progression Pathways

Students will be well suited for applying for NPA Bakery course in the Enterprise Academy at Parkhill.

Employment Routes

- Working in a Professional kitchen
- Hospitality Industry



CAMPUS
Parkhill School

ATTENDANCE PATTERN

Tuesday
8.55am - 10.45am
Thursday
9.15am - 10.45am

COURSE AWARD
SCQF Level 3
Credit Points 24

UNITS COVERED

- Food Preparation Techniques:
An Introduction
- Cookery Processes:
An Introduction
- Food Hygiene for the
Hospitality Industry
- Hospitality: Organisation of
Practical Skills
- Understanding and using
ingredients
- REHIS food hygiene

HOURS OF LEARNING
160

CAMPUS

Easterhouse

ATTENDANCE PATTERN

Tuesday

9.30am - 3.30pm

COURSE AWARD

SCQF Level 3

Credit Points 6

UNITS COVERED

- Forest Skills
- Sports Coaching

HOURS OF LEARNING

120

Outdoor & Coach of Tomorrow

Course Outline

*** This course is predominately aimed at students from non-mainstream educational establishments and specialist units who have a learning disability/autism and require additional support with their learning ***

The aim and focus of this one-day programme is to give students who are leaving school this year and are working at SCQF Level 3, the opportunity to experience various units. The course is based in Easterhouse Campus in the morning and Ibrox Stadium in the afternoon and focuses on providing opportunities for experiential learning and taking part in the following vocational units:

Forest School (The Conservation Volunteers)
Science - Environmental Studies (Community Garden)
NM Sports

This exciting programme allows pupils the opportunity to work with staff from Glasgow Kelvin College and Professional Coaching Staff from Glasgow Rangers Charity Foundation. Coach of Tomorrow not only teaches players about how to perform on the pitch but also about the benefits of health and fitness, how to manage pressure, how to build respect and values. Train one afternoon each week with qualified coaching staff and learn to set 'New Goals' with the Glasgow Kelvin College Coach of Tomorrow Football Programme.

Course Entry Requirements

Students must be working at Level 3

Progression Pathways

Pathways, Platform to Employment, Steps to Employment or Working towards Independence

Employment Routes

Sports Coaching through supported employment or progression through Pathways.

Course Outline

*** This course is predominately aimed at students from non-mainstream educational establishments and specialist units ***

This course is designed for pupils who have additional support needs for learning. Students will develop a range of employability skills for the Hospitality Industry. As well as food and drink service skills practice, students will develop their confidence and team working skills and an awareness of the size and opportunities for employment within the Hospitality Industry.

Students will also have the opportunity to train within our training environments such as City Bistro and Scholars Restaurant.

Course Entry Requirements

No formal entry requirements however all students should be in Senior Phase in School and have a keen interest in all subject areas.

Progression Pathways

Students could progress to:

- Senior Phase Hospitality/Events/Travel & Tourism
- NQ Events/Hospitality at City of Glasgow College

Employment Routes

On completion of the course students may apply for employment within Front of House entry level, operative positions within hotels, restaurants and contact catering sector.

**CITY OF GLASGOW
COLLEGE**

CAMPUS

City

ATTENDANCE PATTERN

Tuesday

9.30am - 2.30pm

COURSE AWARD

SCQF Level 3/4

Credit Points 5

UNITS COVERED

- Introduction to Food Service Skills
- REHIS Elementary Food Hygiene certificate
- Work Experience
- Customer Care and Local Tourist Attractions

HOURS OF LEARNING

155

Level 4 - 7

Course Outline

This course will guide you through the basic skills and requirements needed to start you on an exciting career path. Working with highly qualified lecturers who have a wealth of professional experience, you'll practise Bread Making, Cake Decoration, Pastry and Craft Baking.

You'll learn to produce a range of bakery products in one of our specialist bakeries. You'll explore the bread making processes that are currently in use within the craft baking industry and will use a variety of equipment and techniques to bake a range of breads.

You'll practise decorative techniques and discover how to use them to produce the desired effect on a cake. You'll develop introductory knowledge and practical skills in pastry work. You'll consider the ingredients and techniques used to produce a range of simple pastry items. You'll investigate common faults that can occur when making different types of pastry and how to remedy these.

Course Entry Requirements

Students should have some experience of the Home Economics Curriculum gained during S1 to S4, have an enthusiasm for food and/or baking and have literacy and numeracy skills at SCQF Level 4.

Progression Pathways

This course offers multiple progression routes, either towards employment or for further study. Following successful completion of this course, you can continue to study Bakery at City, from a NQ at Level 5 through to Professional Cookery HND at Level 8.

Employment Routes

Recent events have resulted in increased opportunities in the Hospitality and Tourism Sectors. This course is an ideal first step towards a career in: Hotel Kitchens, Restaurants, or retail bakeries.

CITY OF GLASGOW
COLLEGE

CAMPUS

City

ATTENDANCE PATTERN

Tuesday and Thursday
1.30pm - 4.00pm

COURSE AWARD

SCQF Level 4
Credit Points 24

UNITS COVERED

An Introduction to:

- Craft Baking
- Bread Making
- Cake Decoration
- Pastry

HOURS OF LEARNING

155



CAMPUS
Springburn

ATTENDANCE PATTERN
Tuesday and Thursday
1.30pm - 4.00pm

COURSE AWARD
SCQF Level 4
Credit Points TBC

UNITS COVERED

- Personal Fitness and Nutrition
- Outdoor Activities
- Physical Education:
Performance Skills

HOURS OF LEARNING
160

Games & Sport

Course Outline

This exciting new introductory course is designed for people who are interested in the world of Adventure, Games and Sport.

This course will be facilitated at various locations such as Pinkston Watersports, Mugdock country park, Pollok Country Park as well as Springburn Campus.

Students will be transported via minibus to the different locations. There will be a rotation of activities with some taking preference during colder or warmer weather.

Course Aim: develop a range of movement and performance skills in Adventure, Games and Sport activities.

Course Entry Requirements

Students must have a strong interest in fitness and be willing to participate in a variety of activities. Water confidence is essential.

Progression Pathways

- NQ Sports and Fitness

Employment Routes

Successful completion of this course will provide opportunities to pathways for a Career within the Health and Fitness sector.

Course Outline

*** This course is predominately aimed at students from non-mainstream educational establishments and specialist units ***

Hotel School Scotland is a programme for young people who are thinking of leaving school and have an interest in moving into the Hospitality Industry. Through a collaborative effort with Hub International and partner organizations Glasgow Hilton and Double Tree Hilton Glasgow, this course, which is additionally supported by a job coach, seeks to assist pupils in advancing towards full-time or part time employment.

The course is split across 3 days. Monday is a full day supported by Hub International using the Enterprise Academy facilities including the Hotel room, Café and professional kitchen.

On Tuesday AM pupils visit hospitality venues and organisations to develop their understanding of the industry. On Wednesday PM pupils will study the hospitality industry through the National 4 Skills for Work course.

Pupils will be attending work experience in a range of hotel/hospitality settings between Feb-June. Pupils must be old enough to do work experience so should be at least 15 years old when they begin the course.

- Please note, commencement of this course is dependent on continuation of funding.

Course Entry Requirements

Keen interest in hospitality and hotel industry.

Progression Pathways

It is hoped that on completing the course pupils will move on to employment.

Employment Routes

Full or Part time employment in hotel industry.



CAMPUS

Enterprise Academy

ATTENDANCE PATTERN

Monday

9.15am - 3.00pm -
Hub International

Tuesday - 9.30am - 12.00pm -
visits and DYW input

Wednesday 1.00pm - 3.00pm -
Skills for work

COURSE AWARD

SCQF Level 4

Credit Points 24

UNITS COVERED

- National 4 Skills for Work Hospitality Course
- Working in the Hospitality Industry
- Working in the Hospitality Industry – Scotland
- Working in the Professional Kitchen
- Working Front of House
- Introduction to Events

HOURS OF LEARNING

360

CAMPUS

City

ATTENDANCE PATTERN

Tuesday and Thursday
1.30pm - 4.00pm

COURSE AWARD

SCQF Level 4
Credit Points 24

UNITS COVERED

- Food Hygiene for the Hospitality Industry
- Organisation of Practical Skills (OPS)
- Craft Baking; An Introduction
- Introduction to Food Preparation Techniques
- Introduction to Cookery Processes

HOURS OF LEARNING

155

NPA Professional Cookery

Course Outline

Are you a budding chef, you can develop your skills in our industry standard facilities, working alongside chefs with years of kitchen experience.

You'll use a range of professional equipment, to produce and present a variety of delicious dishes.

Working collaboratively, you'll develop the capability to plan your time in the kitchen as part of a team, gathering ingredients, negotiating use of equipment and communicating with your team to complete your tasks on time.

You'll learn to produce a range of baked goods whilst following industry standard health & safety and hygiene measures. You'll practise decorative cake techniques, preparing and applying a range of coatings and practise how to produce a variety of effects on a cake.

As "the proof of the pudding is in the eating", you will have the chance to taste your food to better understand the importance of flavour and texture in your dishes.

Course Entry Requirements

This course would suit students with some experience of the Home Economics Curriculum gained during S1 to S4, most likely you will have attained or working towards a National 4 Qualification in Home Economics, Food & Health or Food Technology.

Progression Pathways

Following successful completion of this course, you can continue to study Professional Cookery or Bakery at City, from a NQ at Level 5 through to Professional Cookery HND at Level 8.

Employment Routes

Recent events have resulted in increased opportunities in the Hospitality and Tourism Sectors. This course is an ideal first step towards a career in a professional kitchen, be it in a Pub, Hotel or Restaurant.

Course Outline

*** This course is predominately aimed at students from non-mainstream educational establishments and specialist units ***

Students will learn about how to make a range of coffees as well as other hot drinks in our bespoke Café area and using our professional coffee machine.

This unit is designed to enable learners to develop basic knowledge, understanding and technical skills required for the role of a barista. The unit covers how to operate specialist equipment to prepare and serve coffee and a variety of other drinks.

Course Entry Requirements

Students should be working at a minimum of National 4 level in English and Maths. An enthusiasm and interest in working in the hospitality industry.

Progression Pathways

Possible Barista courses/employment in a cafe, restaurant, hotel or bar.
Hospitality courses at colleges.

Employment Routes

This qualification and course would allow pupils to develop their skills and understanding for the hospitality industry and would therefore be perfect for pupils who wish to work in a café, restaurant, hotel or bar.



CAMPUS

Enterprise Academy

ATTENDANCE PATTERN

Thursday
9.15am - 10.45am

COURSE AWARD

SCQF Level 5
Credit Points 6

UNITS COVERED

- Award in Barista skills Level 5
- Course assessment;
 - Students will be assessed on their understanding and practical skills.

HOURS OF LEARNING

50







Course Outline

This exciting collaborative course brings together this world of Travel, Events and Hospitality in an innovative and inspirational way.

Learning within our simulated aircraft cabin and purpose-built Airline Check-in desks, you'll develop knowledge of the aviation industry and practise the skills required to work as a member of Cabin Crew. You'll explore different types of airport check-in work, following the customer journey through the airport from check-in to security to boarding the aircraft for their flight.

You'll develop a range of food and drink service skills; barista training to providing food and drinks service at your own events. You'll explore a wide variety of beverages such as speciality coffee/tea's, mocktails, bubble teas and other on trend drinks. You'll learn about effective events management. Working collaboratively, you'll plan, organise and stage an event within our training restaurants Scholars and City Bistro.

Guest speakers from industry partners, practical experience and the opportunity for site visits will ensure that you'll develop a clear understanding of the vibrant career paths available in this sector.

Course Entry Requirements

This course would suit personable, outgoing and enthusiastic students who hold three National 4 Qualifications (including English and Maths) and who have a genuine desire to work in the Travel, Events or Hospitality sector.

Progression Pathways

Combined with other qualifications, successful completion of this course puts you on a progression pathway through NQ at Level 6 to HND at Level 8 in either Hospitality Management, Travel & Tourism or Events Management.

Employment Routes

Recent events have resulted in increased opportunities in the Events, Hospitality, Tourism and Travel Sectors. This course is an ideal first step towards a career in: Events Assistant, Events Planner, Hotel Front of House, Cabin Crew, Tour Guide or Working in a Travel Agency.

This course will provide you with a multitude of transferable skills you could use in any job.

www.cityofglasgowcollege.ac.uk

CITY OF GLASGOW
COLLEGE

CAMPUS

City

ATTENDANCE PATTERN

Tuesday and Thursday
1.30pm - 4.00pm

COURSE AWARD

SCQF Level 5
Credit Points 24

UNITS COVERED

- Non-Alcoholic Beverages
- Assist with an Event
- Working as Air Cabin Crew: An Introduction
- Airport Ground Operations

HOURS OF LEARNING

155

CAMPUS
Springburn

ATTENDANCE PATTERN
Tuesday and Thursday
1.30pm - 4.00pm

COURSE AWARD
SCQF Level 6
Credit Points 5

UNITS COVERED

- Personal Fitness and Nutrition
- Outdoor Activities
- Physical Education:
Performance Skills

HOURS OF LEARNING
160

Introduction to Sport & Fitness

Course Outline

This exciting new introductory course is designed for students who have a genuine interest in fitness. This course is aimed at those who wish to understand and learn about personal fitness and human anatomy.

Senior students to understand how to programme and plan their own fitness journey. You will also gain the skills to plan and design a circuit class and a weight training session. Students will learn about planning a fitness programme designed for their individual needs, using the principles of fitness training.

Students will investigate and participate in different types of fitness training, including the importance of warm ups, cool downs and effective personal preparation. This course will be facilitated at various locations such as Pinkston Watersports, Mugdock country park, Pollok Country Park as well as Springburn Campus. Students will be transported via minibus to the different locations.

There will be a rotation of activities with some taking preference during colder or warmer weather.

Course Entry Requirements

Students must have a strong interest in fitness and be willing to participate in a variety of activities. Water confidence is essential.

Progression Pathways

Students can progress onto courses in:

- Fitness, Health & Exercise
- Adventure Sports
- Sports Coaching

Employment Routes

Successful completion of this course will provide opportunities to pathways or a Career within the Health and Fitness sector.





Course Outline

During this engaging and exciting course, you will not only learn the skills and event industry knowledge necessary to run a successful event, but will have the opportunity to put these skills into practice by organising events across the year.

Working collaboratively, you'll explore all aspects of event planning, from conception to execution. You'll consider event organisation, event costing, marketing and evaluation. You'll learn how to create a budget for an event, carrying out a range of costings and calculations, operate a petty cash system and consider profit and loss.

Across this course you will enhance your employability skills. Working within a team: you will use your written and spoken communication skills; you will explore approaches to planning and problem-solving; you will monitor and evaluate your progress, both individually and as a team. These are valuable transferable skills that are valued in a wide range of careers.

Course Entry Requirements

This course would suit inventive, imaginative and inquiring individuals who work well as part of a team. Whilst there are no formal entry requirements, students should be interested in a career in the events industry and studying other subjects at level SCQF Level 5 particularly in English, History or Business Administration.

Progression Pathways

Successful completion of this course combined with at least one additional Level 5 qualification will allow you to progress onto an HND in Hospitality Management or HND in Events Management. Alternatively, you could pursue a Travel and Tourism path through HNC and HND. You could also progress to a degree programme at Universities across Scotland.

Employment Routes

Scotland is widely recognised to be a global leader in the events industry. This course could be the first step to a wide and varied career within this vibrant sector: Management, from Wedding Planning to Venue Management, Fundraising to Festival Management. This course will provide you with a multitude of transferable skills you could use in any job.

CITY OF GLASGOW
COLLEGE

CAMPUS

City

ATTENDANCE PATTERN

Tuesday and Thursday
1.30pm - 4.00pm

COURSE AWARD

SCQF Level 6
Credit Points 24

UNITS COVERED

- Event Organisation
- Events Costing:
An Introduction
- Corporate Events:
An Introduction

HOURS OF LEARNING

155



Health Care and
Education

Level 4 - 7



CAMPUS
Langside

ATTENDANCE PATTERN
Tuesday and Thursday
1.30pm - 4.00pm

COURSE AWARD
SCQF Level 4
Credit Points 24

UNITS COVERED
Mandatory Units:

- Child Development
- Play in Early Learning and Childcare
- Working in Early Learning and Childcare

Candidates also study one optional Unit which will be chosen by the college:

- Care of Children
- Maintenance of a Safe Environment
- Contemporary Families

HOURS OF LEARNING
155

SFW Early Learning and Childcare

Course Outline

This course is designed as an introduction to Early Learning and Childcare and will help you to begin to understand some of the demands and responsibilities of working in this sector.

The Early Learning and Childcare course offers opportunities for you to acquire critical generic employability skills through a variety of practical experiences that are linked to this particular vocational area, early learning, childcare and play work.

Please note there is no placement attached to this course.

Course Entry Requirements

You must have a clear interest in the subject area along with:

- Nat 4 Maths and/or English
- Ideal students will be in S5 or 6

Progression Pathways

After successful completion of this course, you will be offered the opportunity of internal progression. This will depend on your attendance and commitment to this course. You would potentially gain a place on:

- National Certificate (NC) or National Qualification (NQ) course in Early Education and Childcare

You might also go on to do:

- Higher National Certificate (HNC) in Early Education and Childcare.
- The entry point (level you would study) would be dependent on the level and relevance of your other qualifications.

Employment Routes

- You may be able to progress to a Nursery Manager post once you have achieved a degree or equivalent in Childhood Practice
- A Modern Apprenticeship in Childcare or Early Years Care and Education, leading to a Scottish Vocational Qualification (SVQ) Levels 2 to 4 in Children's Care, Learning and Development



CAMPUS

City

ATTENDANCE PATTERN

Tuesday and Thursday
1.30pm - 4.00pm

COURSE AWARD

SCQF Level 4
Credit Points 24

UNITS COVERED

- An Introduction - Scotland
- Health, Safety, Fitness and Wellbeing
- Engaging with the Community
- Working in Teams

HOURS OF LEARNING

155

Uniformed and Emergency Services

Course Outline

During this introductory qualification, you'll develop the skills, knowledge and attitudes needed for work in the uniformed and emergency services (UES).

You'll investigate the different services, learning about the roles and responsibilities of those working in a specific service team. You'll examine the importance of health, safety, fitness and wellbeing when working in the UES.

You'll participate in practical physical fitness activities both at the services facilities and in the College's state of the art gym halls. You'll develop effective team-working skills through interactive group work and explore the qualities of effective leadership and followership.

Throughout the course you will interact with members of different services, including external site visits and guest lecturers. This will include sessions with the police, the army, the RAF and many more!

Course Entry Requirements

Students should have an interest in the subject and potential career paths. Participation in PE or Sport is advantageous. You should be working at level National 4 English.

Progression Pathways

When combined with other qualifications, successful completion of this course opens up a variety of progress pathways including Criminology, Legal Services and Health, Fitness & Sport Performance.

Employment Routes

This course will provide you with a sound understanding of the career paths, entry requirements and working conditions within the emergency and uniformed services. You can use this knowledge to pursue a career in the Army, Merchant Navy, Royal Air Force, Royal Navy and Royal Marines; and the Ambulance Service, Coastguard, Fire and Rescue and Police.

This course will provide you with a multitude of transferable skills you could use in any job.





CAMPUS
Cardonald

ATTENDANCE PATTERN

Tuesday and Thursday
1.30pm - 4.00pm

COURSE AWARD

SCQF Level 4/5
Credit Points 24

UNITS COVERED

An Introduction to Midwifery and Children's Nursing is a suite of SQA units at SCQF level 4 and 5 as well as a College Certificate. It is not a full award.

Units you will study are:

- Introduction to Midwifery and Children's Nursing (College Certificate)
- Care of Children (SQA Unit)
- Basic Healthcare Needs (SQA Unit)
- Prevention of Infection
- Care Values and Principles

HOURS OF LEARNING

155

Introduction to Midwifery and Children's Nursing

Course Outline

This introductory course will introduce you to the Midwifery and Children's Nursing profession and allow you to examine a career in nursing or health care.

The course consists of practical sessions within the college skills lab, carrying out basic healthcare skills such as bathing babies and undertaking clinical observations.

You will also explore how to care for children and the responsibilities and values of a health care professional will be addressed. You will also examine risks to health care staff and how to improve health & wellbeing.

We will introduce you to speakers from the health care sector and the course tutors will all be from a professional healthcare background and will share their own experiences and advice on career options.

Course Entry Requirements

You must have a clear interest in the subject area along with:

- Two passes at National 5, one of which must be English
- Ideal students will be in S5/6

Progression Pathways

On successful completion of the course along with good attendance and commitment, you will be given the opportunity of internal progression on to one of the following courses:

- NC Level 6 Health Care (pre-Nursing course with clinical placement)
- HNC Healthcare Practice (equivalent to First Year Nursing) in addition to completing the level 6 qualification you will need TWO Highers for access to this HNC course, one Higher should be English

Employment Routes

Entry level jobs and training, including Modern Apprenticeships in the Health and Social care industry.

Course Outline

If you're interested in working with children or adults within the care sector, this course is an ideal first qualification.

You will consider how life experiences and social influences effect people, and consider the impact this has on care practice. Through examining sociological concepts you'll determine how social influences effect people's life chances. You will explore the psychological theories that enable care workers to understand the behaviour of their service users.

You will learn about child protection and the various categories of abuse and neglect which necessitate intervention. You will become familiar with the legal framework, policies, procedures and agencies which are involved in child protection.

You will consider the mental health continuum and gain knowledge of how mental health problems affect individuals and others, and investigate the services available to people with mental health problems.

Course Entry Requirements

This course would suit caring, considerate and compassionate students who have 3 National 4s.

Progression Pathways

Successful completion of the NQ combined with school qualifications enables students to progress on to an NC in either Early Education and Childcare or Health and Social Care before continuing on to study at HNC.

Employment Routes

Education, Health Workers and Social Services are all within the top five employing occupations in Scotland, and this is projected to continue to be the case for the foreseeable future.

CITY OF GLASGOW
COLLEGE

CAMPUS

City

ATTENDANCE PATTERN

Tuesday and Thursday
1.30pm - 4.00pm

COURSE AWARD

SCQF Level 5
Credit Points 30

UNITS COVERED

- Human Development and Behaviour (Psychology)
- Child Protection:
An introduction
- Mental Health Issues:
An Introduction
- Social Influences (Sociology)

HOURS OF LEARNING

155





CAMPUS
Springburn

ATTENDANCE PATTERN

Tuesday and Thursday
1.30pm - 4.00pm

COURSE AWARD

SCQF Level 5
Credit Points 18

UNITS COVERED

- Influences on Mental Health and Wellbeing (Level 4)
- Mental Health Issues: An Introduction (Level 5)
- Criminology: Crime in the Community (level 5)

HOURS OF LEARNING

160

Mental Health & Criminology

Course Outline

This gives you a taster of Mental Health and Criminology units, which can lead to higher-level courses in the care sector and eventually care work with focus on Mental Health; also, higher-level courses in Criminology or Humanities. This course will assist you in developing transferable skills such as: employability, wellbeing and personal growth.

Course Entry Requirements

You should be working toward National 5 English and have a genuine interest in Mental Health Care and/or Criminology. Looking at careers in Social Work, Mental Health Care and/or the field of Criminology and Criminal Justice.

Progression Pathways

- Mental Health Nursing
- Social work
- Criminal Justice
- Criminology

Employment Routes

- Mental Health Nursing
- Social Work
- Justice System



Course Outline

The main purpose of the course is to enable students to develop an understanding of the human mind and behaviour and to enhance their interest in psychology.

The course is suitable for all students with an interest in finding out more about the human mind and behaviour.

Course Entry Requirements

There are no pre-entry requirements. Students will probably have little or no prior experience of studying psychology, but an interest in human behaviour and life experience will provide a good foundation for them to progress to this qualification.

Students should have or be working towards National 5 English.

Progression Pathways

This Course or its Units may provide progression to:

- Higher Psychology Course or relevant component Units
- Other qualifications in social studies, social sciences or related areas
- Further study, employment and/or training

Employment Routes

Career options related to:

- Psychology
- Sociology
- Health and Social Care

CAMPUS
Springburn

ATTENDANCE PATTERN
Tuesday and Thursday
1.30pm - 4.00pm

COURSE AWARD
SCQF Level 5
Credit Points 24

UNITS COVERED
Psychology:

- Research
- Individual Behaviour
- Social Behaviour

HOURS OF LEARNING
160



CAMPUS
Anniesland

ATTENDANCE PATTERN

Tuesday and Thursday
1.30pm - 4.00pm

COURSE AWARD

SCQF Level 5
Credit Points 24

UNITS COVERED

Skills for Work Early Education and
Childcare SCQF Level 5:

Some of the units covered
included:

- Development and Wellbeing of Children and Young People
- Play in Early Learning and Childcare
- Working in Early Learning and Childcare

HOURS OF LEARNING

155

SFW Early Learning and Childcare

Course Outline

Are you currently working in school at National 5 level or above? Are you interested in working with children aged 0-12 years? Are you are interested in a career in the following areas; Child Development Officer, Child minding, Early Year's practitioner, Play worker or Play assistant or even Primary Teaching. Glasgow Clyde College can offer you an introduction to the basic knowledge and skills required to prepare you for further study leading to potential employment in the Early Education and Childcare sector.

The skills for work course is designed as an Introduction to Early Education and Childcare at National 5 level and will help you understand some of the demands and responsibilities for working in this sector.

Course Entry Requirements

You must have a clear interest in Early Education and Childcare along with:

- National 5 English
- Ideal students will be in S5 or 6

Progression Pathways

On successful completion of this course, you will have the opportunity to be treated as an internal applicant. This will also be dependent on your attendance and commitment to this course. You could progress on to the following full-time programme:

- National Qualification (NQ) Level 5 or 6 in Early Education and Childcare

Employment Routes

- Child Development Assistant (Modern Apprentice)
- Playworker (following additional qualifications)
- Child Development Officer (following additional qualifications)



Course Outline

National 5 Skills for Work: Early Education and Childcare is an introductory qualification that develops the skills, knowledge, and attitudes needed for work in early education and childcare sector.

At National 5, students begin to prepare for working in the sector. They also develop transferable employability skills, including:

- an understanding of the workplace and the employee's responsibilities (eg time-keeping, appearance, customer care)
- self-evaluation skills
- positive attitude to learning
- flexible approaches to solving problems
- adaptability and positive attitude to change
- confidence to set goals, reflect and learn from experience
- skills to become effective job-seekers and employees

The course provides students with the opportunity to further develop transferable skills for employability in the ever expanding field of Early Education and Childcare. This includes developing and analysing the skills required to work with children and young people.

Course Entry Requirements

This is an excellent opportunity for young people on the SfW level 4 Early Education and Childcare to progress, whilst still at School. Internal progression would depend on completion of the level 4, progress reports and genuine interest in this career pathway. Other students should have gained a minimum of three subjects at National 4 or above. They must have, or be working towards, English at National 5.

Progression Pathways

On successful completion of the course, a guaranteed interview for NC Early Education and Childcare (Higher) at Glasgow Kelvin College.

Employment Routes

Possible progression to an appropriate full time NC college course or a Modern Apprenticeship; leading to a Scottish Vocational Qualification (SVQ) level 3 in Social Services: Children and Young People.

CAMPUS
Eastend

ATTENDANCE PATTERN
Tuesday and Thursday
1.30pm - 4.00pm

COURSE AWARD
SCQF Level 5
Credit Points 18

UNITS COVERED

- Mandatory Units (all 3 included)
- Development and Wellbeing of Children and Young People
 - Play in Early Learning and Childcare
 - Working in Early Learning and Childcare

Optional Units (1 will be selected):

- Care and Feeding of Children and Young People
- Contemporary Families
- Introduction to First Aid
- Children and Young people: Rights and Protection

HOURS OF LEARNING
160

CAMPUS

City

ATTENDANCE PATTERN

Tuesday and Thursday
1.30pm - 4.00pm

COURSE AWARD

SCQF Level 6
Credit Points 24

UNITS COVERED

You will learn to develop:

- reading, listening, talking and writing skills in Italian
- application of knowledge and understanding of Italian
- the skill of translation
- literacy skills.

HOURS OF LEARNING

155

Higher Italian

Course Outline

Italy is rich in history and culture, as well as being a beautiful language to listen to, and speak. It is spoken in Switzerland, San Marino and parts of Croatia and Slovenia, as well as Italy itself.

Italy is a major economy in the world, and the seventh largest global market for British exports. So, there are plenty of opportunities to use Italian in a wide range of industries and organisations. It is one of the top five business languages currently in demand in the UK.

This course aims to help you develop your reading, listening, talking and writing skills in Italian, in a variety of contexts. You will encounter a wide range of different types of texts in different media. In addition, the course also provides you with knowledge of Italy and the customs and way of life of the Italian people.

Course Entry Requirements

Ideally students will have National 5 Italian, though we would accept National 4 or equivalent. Students with qualifications in Spanish may also apply.

Progression Pathways

With Higher Italian, you can study Travel and Tourism or Business with Languages at both HNC and HND.

Employment Routes

Jobs that use Italian language skills include positions like teachers, translators, and interpreters. However, with further study, you could use your language skills to work in business services, marketing, advertising, management, banking, communications, or the civil service.

Course Outline

Psychology is the scientific study of the human mind and behaviour. This course develops your ability to analyse explanations for individual and social behaviour. You will learn about how thoughts and emotions can affect how we feel and behave.

You'll gain an understanding of different psychological approaches through the study of stress and sleep. You'll study social behaviour, examining prejudice, conformity and obedience.

As Psychology is a research-based subject, you will gain an understanding of research methods and skills, including experimental and non-experimental research methods, research designs and analysis. You will conduct practical research, working with human participants, in accordance with ethical standards.

Course Entry Requirements

This course would suit curious and analytical students with good attention to detail who are interested in the human mind and behaviour. It is essential that students have achieved 3 National 5 subjects at C or above, including one literary subject.

Progression Pathways

Successful completion of Higher Psychology allows students to progress through HNC to HND in Social Sciences.

Employment Routes

Further study of Psychology will equip you with many transferable skills and qualities valued within the public, private and third sector including research and data analysis, critical thinking and relationship building.

Psychology graduates work in many settings, such as health and social care, education, charity, commerce, human resources, marketing or data analytics.

CITY OF GLASGOW
COLLEGE

CAMPUS

City

ATTENDANCE PATTERN

Tuesday and Thursday
1.30pm - 4.00pm

COURSE AWARD

SCQF Level 6
Credit Points 24

UNITS COVERED

Psychology:

- Research Methods
- Individual Behaviour
- Social Behaviour

HOURS OF LEARNING

155



CAMPUS
Anniesland

ATTENDANCE PATTERN
Tuesday and Thursday
1.30pm - 4.00pm

COURSE AWARD
SCQF Level 6
Credit Points 24

UNITS COVERED
Psychology SCQF Level 6:

- Research
- Individual Behaviour
- Social Behaviour

This course is very demanding in terms of written work, study at home and group work.

HOURS OF LEARNING
160

Higher Psychology

Course Outline

The central theme of the Higher Psychology course is to enable you to investigate psychological knowledge and research, which will promote your understanding of individual and social behaviour.

You will analyse and evaluate concepts, theories and approaches, and will draw on research evidence to explain human behaviour.

Course Entry Requirements

You must have:

- Higher English at A or B level.
- Other Social subjects may be considered with this same grade (Higher History, Modern Studies, or Geography). However, this would be dependent on there being spaces available on the course.
- Ideal students will be in S5 or 6

Progression Pathways

On successful completion of the course, you will be given the opportunity of internal progression within Glasgow Clyde. You might go on to do:

- HNC/D courses in social science
- The level you might enter would depend on the level and relevance of your other qualifications

Employment Routes

Employment in psychology, social sciences, sciences, criminology or business.



CAMPUS

City

ATTENDANCE PATTERN

Tuesday and Thursday
1.30pm - 4.00pm

COURSE AWARD

SCQF Level 6
Credit Points 24

UNITS COVERED

You will learn to develop:
reading, listening, talking and
writing skills in Spanish
application of knowledge and
understanding of Spanish
the skill of translation
literacy skills.

HOURS OF LEARNING

155

Higher Spanish

Course Outline

Spanish is useful for both business and travel. Spanish is the second most spoken native language with around 400 million people worldwide speaking Spanish, especially in South American countries such as Mexico and Venezuela.

Spain is a beautiful country rich in history and culture, making it a popular holiday destination for British people. Spain is also an important trading partner of the UK. Many companies need employees who are fluent in one or more European languages. So, learning Spanish gives you many options for your future career. The skills you develop in Spanish are useful in many different career areas such as travel and tourism, languages, teaching and in trade and industry.

This course aims to help you develop your reading, listening, talking and writing skills in Spanish, in a variety of contexts. You will encounter a wide range of different types of texts in different media.

In addition, the course also provides you with knowledge of Spanish and the customs and way of life of the Spanish people.

Course Entry Requirements

Ideally students will have National 5 Spanish, though we would accept National 4 or equivalent. Students with qualifications in Italian may also apply.

Progression Pathways

With Higher Spanish, you can study Travel and Tourism or Business with Languages at both HNC and HND.

Employment Routes

Jobs that use Spanish language skills include positions like teachers, translators, and interpreters. However, with further study, you could use your language skills to work in business services, marketing, advertising, management, banking, communications, or the civil service.

Course Outline

The Introduction to Nursing programme will provide you with an introduction to the nursing profession which will allow you to examine a career in nursing or health care. The course consists of practical sessions within the college skills lab carrying out foundation nursing skills and prevention of infection.

An introduction to mental health and first aid will be included. You will investigate professional standards and accountability in effective care practice and gain academic skills that will prepare you for future university study.

Course Entry Requirements

You must have:

- National 5 Maths or Application of Maths. You must also be sitting at least two Highers or have achieved two Highers that meet the Glasgow Caledonian Pathway requirements (two Highers at a B Grade -one Higher must be an essay/written subject).
- Ideal students will be in S5/6

Progression Pathways

On successful completion, you will have the opportunity to apply as an internal applicant or progress to Glasgow Caledonian University directly. This will be dependent on your attendance and commitment to this course. To progress to Glasgow Caledonian University adult or learning disability BSc Nursing studies degrees, you must have the entry requirements stated above. If you do not qualify for the Glasgow Caledonian progression, you might go on to do:

- National Certificate Level 6 Health Care (Pre-Nursing course with clinical placement on average one day per week).
- Higher National Certificate Healthcare Practice (Equivalent to First Year Nursing). You will be required to have successfully completed the Intro to Nursing plus have one additional Highers, one of which must be essay/written subject.

Employment Routes

Employment opportunities after training as an Adult Nurse, Children and Young People's Nurse, Health play specialist, Health Visitor, Mental Health Nurse, Learning Disability Nurse, Midwife or Paramedic. If the Occupational Therapy route is followed opportunities exist to progress to study on a degree programme to become a Registered Occupational Therapist.



CAMPUS

Anniesland

ATTENDANCE PATTERN

Tuesday and Thursday
1.30pm - 4.00pm

COURSE AWARD

SCQF Level 6
Credit Points 30

UNITS COVERED

Introduction to Nursing SCQF
Level 5/6. Units you will study are:

- Academic Writing for Health Care
- Introduction to Mental Health
- Foundations of Care Practice
- First Aid

HOURS OF LEARNING

155

CAMPUS
City

ATTENDANCE PATTERN
Tuesday and Thursday
1.30pm - 4.00pm

COURSE AWARD
SCQF Level 6
Credit Points 24

UNITS COVERED

- Understanding Brain Health
- Influences on Mental Health and Wellbeing
- Promoting Mental Health and Wellbeing
- The Impact of the Digital Society and the Information Age on Mental Health and Wellbeing

HOURS OF LEARNING
155

Mental Health & Wellbeing

Course Outline

Mental Health and Wellbeing has a massive impact on the quality of our lives. This course is designed to help you explore these issues and to empower you to develop healthy coping strategies, so you are well equipped to live a positive and healthy life. You'll consider biological, psychological, sociological and cultural perspectives which influence how we understand mental health and wellbeing and consider how these different models and approaches inform public health responses.

You'll discuss stigma around mental health and wellbeing and gain an insight into psychological theory and knowledge that inform strategies on how you can support yourself and others. You'll consider how we think, feel, and behave has been impacted by the evolution of the digital society, and explore how these changes have affected our physical and mental wellbeing as the use of technology and social media has increased.

This is an interactive and engaging class linking and developing knowledge through learning development and project work.

Course Entry Requirements

This course would particularly suit students who are looking to make a positive impact on their individual mental health and wellbeing. It is essential that you have achieved Nat 5 English at Grade C or above, and are working towards a Higher qualification.

Progression Pathways

Whilst this course can be studied for personal development, it also acts as an entry point into qualifications in Health and Social Care. You can progress directly to courses in Early Years, Counselling or Social Care, which open up access to degree programmes.

Employment Routes

This course could be the first step into a varied and engaging career sector; from Youth Work to Paramedic Science, Occupational Health to Counselling. Education, Health Workers and Social Services are all within the top five employing occupations in Scotland, and this is projected to continue to be the case for the foreseeable future.



Course Outline

Are you wanting to work with children and young people and have a keen interest in a career in the following areas: Child Development Officer, Childhood Practice Practitioner, Playworker, or Primary Teaching.

If the answer is yes, you have the opportunity to study the theory and practice required to prepare you for further study leading to potential employment.

The National Progression Award is designed as a stepping-stone towards support practitioner status at SCQF Level 6 or to further study at Higher National Certificate SCQF Level 7.

When you are completing this qualification, you will have the opportunity to choose to add value through the completion of a work placement. You will be given the choice to complete a work placement which on successful completion will provide you with a Foundation Apprenticeship.

Course Entry Requirements

You must have a clear interest in Early Learning and Childcare, Playwork, Education or Social Services. along with/working towards:

- Higher English
- Ideal students will be in S5/6

Progression Pathways

On successful completion of this course, you will have the opportunity to be treated as an internal applicant. This will also be dependent on your attendance and commitment to this course. You could progress on to the following full-time programmes:

- HNC Childhood Practice (SCQF Level 7)
- HNC Additional Support Needs (SCQF Level 7)

Employment Routes

You may be able to progress to a Nursery Manager post once you have achieved a degree or equivalent in Childhood Practice.

- A Modern Apprenticeship in Childcare or Early Years Care and Education, leading to a Scottish Vocational Qualification (SVQ) Levels 2 to 4 in Children's Care, Learning and Development

CAMPUS
Langside

ATTENDANCE PATTERN

Tuesday and Thursday
1.30pm - 4.00pm

You will have the opportunity to choose to do a 3-week block placement in June and potentially commit to additional time as required (this will be discussed with your school) in order to achieve a Foundation Apprenticeship.

COURSE AWARD

SCQF Level 6
Credit Points 24

UNITS COVERED

Units covered include:

- Communication with Children and Young People
- Play for Children and Young People
- Development of Children and Young People
- Promote the Wellbeing and Safety of Children and Young People
- Safeguarding of Children and Young People

HOURS OF LEARNING

155

CAMPUS

City

ATTENDANCE PATTERN

Tuesday and Thursday
1.30pm - 4.00pm

COURSE AWARD

SCQF Level 6
Credit Points 24

UNITS COVERED

- Communication with Children & Young People
- Safeguarding of Children & Young People
- Promote the Wellbeing & Safety of Children & Young People
- Development of Children & Young People
- Play for Children & Young People

HOURS OF LEARNING

155

NPA Social Services, Children & Young People

Course Outline

This introductory course will provide you with real life skills, opportunities for career planning and the enhancement of employment prospects within children and young people's services.

You will learn about the perspectives of child development a variety of influences and circumstances may affect their development. You'll consider the importance and benefits of play and develop your understanding of how adults can support play.

You will investigate different methods of communication with children and young people. You'll identify barriers to communication and ways they can be overcome. You will examine the wellbeing and safety of children and young people and the adult's role in ensuring their safety. You will consider different types of risk, harm and exploitation, together with signs and symptoms that might indicate they are occurring.

The qualification also meets the National Occupation Standards for employers.

Course Entry Requirements

This course would suit caring, considerate and compassionate students with a genuine desire to work in the childcare sector. It is essential that you have achieved Nat 5 English and are working towards a Higher qualification.

Progression Pathways

Successful completion of this National Progression Award allows you access to a varied progression path. If you have additional Highers including English you may be able undertake an HNC in Childhood Practice, Healthcare Practice or Social Services. You can also progress into a diverse range of University degrees.

Employment Routes

Education, Health Workers and Social Services are all within the top five employing occupations in Scotland, and this is projected to continue to be the case for the foreseeable future.

This course could prove to be the first step to many careers within this sector including Early Learning and Childcare Practitioner, Primary School Teacher or working with parents and families.



CAMPUS

City

ATTENDANCE PATTERN

Tuesday and Thursday
1.30pm - 4.00pm

COURSE AWARD

SCQF Level 6
Credit Points 12

UNITS COVERED

- Youth Work: Engaging with Young People
- Working with Communities: Youth Work
- Community Impact and Teamwork

HOURS OF LEARNING

155

Youth Work

Course Outline

Embark on an enriching journey with our NPA Level 6 Youth Work programme, featuring embedded King's Trust SCQF Level 5 units. This course is designed to provide you with vital community engagement and teamwork skills through a blend of theoretical learning and practical application.

Participants will engage in an interactive and hands-on youth work programme, acquiring skills and knowledge to become a youth/community worker. You will have the chance to work directly from a youth work centre, tackling real-world challenges and scenarios. The course culminates in a youth work and community project, allowing you to apply your newfound skills in a meaningful and impactful way.

Ideal for those passionate about community engagement and supporting others, this programme offers a unique opportunity to develop your abilities, gain valuable experience, and make a positive difference in the lives of young people. Join us and become a catalyst for change in your community.

Course Entry Requirements

This course would suit empathetic, adaptable and resilient students who want to make a difference in their communities. It is essential that students have achieved National 5 English at Grade C or above and are working towards a Higher qualification.

Progression Pathways

Successful completion of this NPA enables students to progress on to progress in either Early Education & Childcare or Health & Social Care before continuing on to study at HNC.

Employment Routes

Scotland has a wealth of organisations focussed on improving the lives and outcomes of young people. A bill is currently working its way through the Scottish Parliament which aims to provide universal youth work, that offer a range of activities designed to build confidence, life skills, and social inclusion.

Course Outline

Glasgow Clyde College will provide you with the opportunity to gain a Personal Development Award in Psychology.

The Psychology award aims to provide you with an understanding of psychology and will look at the historical development of psychology since the 19th Century.

The major schools of thought that have influenced the development of psychology will be considered (behaviourist, cognitive, psychoanalytic and biological) as well as the contributions of famous psychologists.

Course Entry Requirements

You must have a clear interest in the subject area along with:

- Higher English at A/B level
- Ideal students will be in S5/6

Progression Pathways

On successful completion of this course, you will have the opportunity to be treated as an internal applicant. This will also be dependent on your attendance and commitment to this course. You could progress on to the following full-time programmes:

- HNC Social Sciences or
- HND Social Sciences

Employment Routes

With further study Employment in psychology, social sciences, sciences, criminology or business.



CAMPUS
Langside

ATTENDANCE PATTERN

Tuesday and Thursday
1.30pm - 4.00pm

COURSE AWARD

SCQF Level 7
Credit Points 24

UNITS COVERED

Units you will study are:

- History and Development of Psychology
- Explanation and Research of Psychological Topics

This course is demanding in terms of written work, study at home and group work.

HOURS OF LEARNING

160



Land Based Industries

Level 1 - 3



Course Outline

*** This course is predominately aimed at students from non-mainstream educational establishments and specialist units ***

This course is aimed at young people in the senior phase who wish to gain practical skills in Horticulture and gardening and enjoy working outdoors.

This course gives learners an opportunity to learn the basics of gardening from tool recognition and use for the care of plants.

Students should show a keen interest in horticulture and working outdoors.

Course Entry Requirements

Students should show a keen interest in horticulture and working outdoors. No formal qualifications are necessary but students should be enthusiastic about working with plants and working outdoors. Students should be working at Level 3 in literacy and numeracy.

Progression Pathways

Students successfully completing this course will be well placed to apply for SVQ Horticulture Level 1 at the Enterprise Academy @ Parkhill.

Employment Routes

- Land services
- Housing Associations
- Horticulture apprenticeships
- Nursery placements



CAMPUS

Enterprise Academy

ATTENDANCE PATTERN

Tuesday and Thursday
9.15am - 10.45am

COURSE AWARD

SCQF Level 3/4
Credit Points 12- 18

UNITS COVERED

- Employability Skills for Land-based Industries
- Land-based Industries: An Introduction
- Crop production: An introduction

HOURS OF LEARNING

100



Course Outline

*** This course is predominately aimed at students from non-mainstream educational establishments and specialist units ***

This course is aimed at young people in the senior phase who wish to gain practical skills in Horticulture and enjoy working outdoors and who have shown competence in horticulture (preferably have completed NPA in Horticulture).

This SVQ gives students an internationally recognised qualification that guarantees they have the skills, knowledge and abilities to carry out their role successfully in horticulture.

SVQ level 4 is designed as an introduction for those seeking a career in the land based industry.

Course Entry Requirements

Students should show a keen interest in horticulture and working outdoors. No formal qualifications are necessary but students should be enthusiastic about working with plants and working outdoors. Students should be working at level 3 literacy and numeracy.

Progression Pathways

Students successfully completing this course will be well placed to apply for a full time NC Horticulture course or to enter employment or an apprenticeship.

Employment Routes

- Housing Associations
- Horticulture apprenticeships
- Nursery placements



CAMPUS

Enterprise Academy

ATTENDANCE PATTERN

Tuesday and Thursday
1.55pm - 3.25pm

COURSE AWARD

SCQF Level 3/4
Credit Points 15

UNITS COVERED

Mandatory units - Students must complete all of the three mandatory units:

- Maintain Safe and Effective Working Practices
- Assist with Planting and Establishing Plants
- Assist with Maintaining Plants

Optional units - Candidates must also complete 3 optional units, in addition to the mandatory units.

HOURS OF LEARNING

100



Transition and Supported Learning

Level 1 - 3

CAMPUS

Eastend

ATTENDANCE PATTERN

Wednesday

10.00am - 3.00pm

COURSE AWARD

SCQF Level 1

Credit Points 3

UNITS COVERED

- Working with Materials
- Drama Skills

HOURS OF LEARNING

120

Drama & Art Schools Link

Course Outline

* This course is predominately aimed at students from non-mainstream educational establishments and specialist units who have a learning disability/autism and require additional support with their learning *

This is an introduction to college at SCQF Level 1 for students will require to have school support to take part in Art and Drama. This one day programme enables students in their last year of school with support needs to experience college and take part in experiential learning activities.

Course Entry Requirements

None required

Progression Pathways

- Skills for Learning Life and Work level 1 Full time
- General Education Full time

Employment Routes

Supported Employment

Course Outline

* This course is predominately aimed at students from non-mainstream educational establishments and specialist units who have a learning disability/autism and require additional support with their learning *

This is an introduction to college at SCQF Level 1 for students will require to have school support to take part in Homeskills and Drama. This one day programme enables students in their last year of school with support needs to experience college and take part in experiential learning activities.

Course Entry Requirements

None Required

Progression Pathways

- Skills for Learning Life and Work level 1 Full time
- General Education Full time

Employment Routes

- Supported Employment



CAMPUS
Eastend

ATTENDANCE PATTERN

Wednesday
10.00am - 3.00pm

COURSE AWARD

SCQF Level 1
Credit Points 3

UNITS COVERED

- Food Preparation:
Making a Healthy Basic Meal
- Drama Skills

HOURS OF LEARNING

120

CAMPUS

Eastend

ATTENDANCE PATTERN

Monday

10.00am - 3.00pm

COURSE AWARD

SCQF Level 2

Credit Points 3

UNITS COVERED

- Capturing Digital Images
- NM Art

HOURS OF LEARNING

120

Photography & Art

Course Outline

* This course is predominately aimed at students from non-mainstream educational establishments and specialist units who have a learning disability/autism and require additional support with their learning *

The aim and focus of this One day programme is to give students working at SCQF Level 2 the opportunity to experience various units. The course is based in the East End campus and focuses on providing opportunities for experiential learning.

Course Entry Requirements

Working at SCQF Level 2

Progression Pathways

- Skills for Learning Life and work (Level 2)
- Intro to Outdoor (Level 2)

Employment Routes

- Supported Employment

“ Be Passionate and
Prepared ”

Course Outline

* This course is predominately aimed at students from non-mainstream educational establishments and specialist units who have a learning disability/autism and require additional support with their learning *

This course aims to develop the skills needed for students to become independent travellers. These skills include numeracy, communication, problem solving and citizenship.

Each week students will be involved in planning, carrying out and reviewing journeys.

As the students' confidence increases, lower levels of support will be required.

They will be accompanied by a member of staff at all times.

Course Entry Requirements

- Students should be working at National 2 or 3
- Students must have a valid bus pass prior to the course starting

Progression Pathways

- Skills for Life & Work at Level 2 or 3

Employment Routes

This course will enable students to improve their independence.



CAMPUS
Langside

ATTENDANCE PATTERN
Tuesday
9.30am - 2.45pm

COURSE AWARD
SCQF Level 2
Credit Points 9

UNITS COVERED
• Travel in the Community

HOURS OF LEARNING
162



CAMPUS
Anniesland

ATTENDANCE PATTERN
Thursday
9.30am - 12.00pm

COURSE AWARD
SCQF Level 2/3
Credit Points 6

UNITS COVERED

- Hobbies and Interests or
- Practical Abilities

HOURS OF LEARNING
90

Coding for Beginners

Course Outline

* This course is predominately aimed at students from non-mainstream educational establishments and specialist units who have a learning disability/autism and require additional support with their learning *

The aim of this course would be to learn the skills to become a software developer.

Scratch is a block-based programming language targeted primarily at young people.

The students would follow a series of exercises, building up their knowledge of the Scratch tools, with the expectation that the students would then become able to create their own software.

Course Entry Requirements

Students should be working at National 3 and have a learning disability.

- Students should be working at / towards Level 3
- They should have an interest in the subject
- Students will be asked to participate in an appropriate selection event in Spring 2025

Progression Pathways

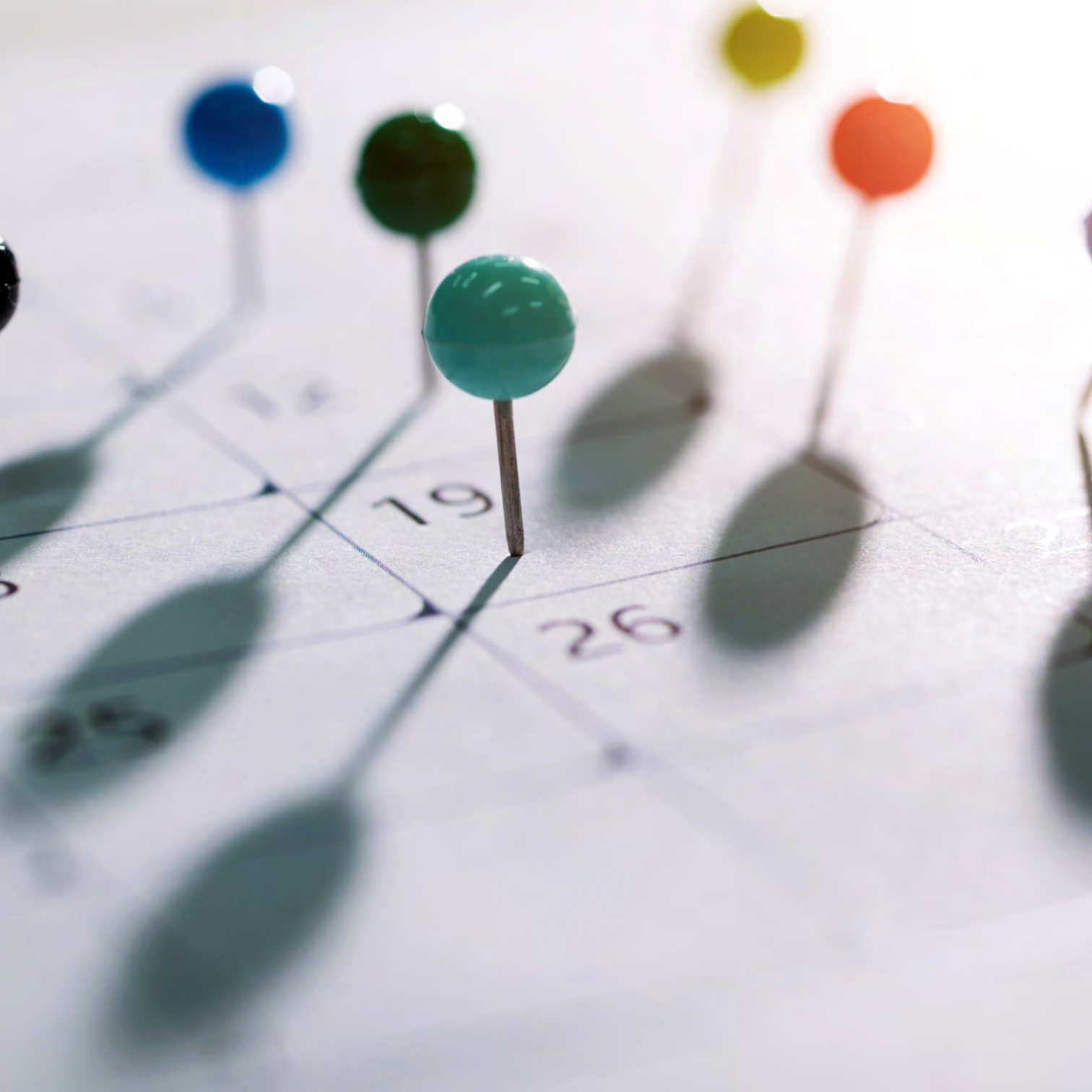
Supported Education courses such as:

- Learning for Independence - Level 2
- Skills for Life & Work at Level 3
- Moving On - Level 3 / 4
- DNF Project Search - Level 3 / 4

Employment Routes

This class would be valuable to anyone who would like to work in a software development.

```
ment.getElementById(div).innerHTML = err  
if (i==2)  
    r atpos=inputs[i].indexOf("@");  
    ar dotpos=inputs[i].lastIndexOf(".");  
    if (atpos<1 || dotpos<atpos+2 || dotpos  
        document.getElementById('errEmail').  
else  
    document.getElementById(div).inner
```



19

26

Course Outline

* This course is predominately aimed at students from non-mainstream educational establishments and specialist units who have a learning disability/autism and require additional support with their learning *

This course will cover a variety of subjects relevant to an individual planning to make the often stressful transition from school to college.

The subject areas covered in the course may include; building relationships, Drugs & Alcohol, , Health & Wellbeing, An introduction to college online learning platforms (Canvas).

The course will incorporate internal and external learning locations.

Course Entry Requirements

- The course will be suited to those students working at National Level 2 / 3
- The course is aimed at those students in their final year of school

Progression Pathways

- Further School Senior Phase Courses
- Full Time ASL courses

Employment Routes

- Training / Apprenticeship Programmes
- Project Search



CAMPUS
Langside

ATTENDANCE PATTERN
Thursday
1.00pm - 3.30pm

COURSE AWARD
SCQF Level 2/3
Credit Points 9

UNITS COVERED
• Personal Achievement:
Safety and Security

HOURS OF LEARNING
99



CAMPUS
Anniesland

ATTENDANCE PATTERN

Monday
1.00pm - 3.30pm

COURSE AWARD

SCQF Level 3
Credit Points 6

UNITS COVERED

TBC

HOURS OF LEARNING

90

Expressive Arts

Course Outline

*** This course is predominately aimed at students from non-mainstream educational establishments and specialist units who have a learning disability/autism and require additional support with their learning ***

Expressive Arts offers exciting and rewarding activities to help develop skills and knowledge through all forms of expressive arts.

The Expressive Arts Course will enable students to:

- Learn and demonstrate techniques in different forms of expressive arts (e.g. visual arts, performing arts, music, crafts, writing)
- Develop an awareness of how creative expression and enjoyment of the arts can have a positive impact on mental health and wellbeing
- Develop their own creative voice and produce their own original work
- Gain an understanding of the importance of arts and creativity in society and industry
- Students will be given the opportunity to plan and present individual and group projects

Course Entry Requirements

- Students should be working at National 2 / 3 and have a learning disability
- Students should be working at Level 2 / 3
- They should have an interest in Media
- Students will be asked to participate in an appropriate selection event

Progression Pathways

Supported Education courses such as;

- Learning for Independence - Level 2
- Skills for Life & Work at Level 3
- Moving On - Level 3 / 4
- DNF Project Search - Level 3 / 4

Employment Routes

Various



CAMPUS

City

ATTENDANCE PATTERN

Friday

9.30am - 12.00pm

COURSE AWARD

SCQF Level 3

Credit Points 18

UNITS COVERED

- Core Skills
- Communication
- Personal & Social Development
- Skills for Life and Work

HOURS OF LEARNING

150

Personal & Social Development

Course Outline

* This course is predominately aimed at students from non-mainstream educational establishments and specialist units *

The aim of this course is to assist students with additional learning needs to make a successful transition from school to Further Education.

The experienced and qualified staff team have a range of generic and subject specific expertise enabling them to provide them to provide a broad curriculum which meets the needs of a wide range of individuals and ensures that students are fully prepared for their next step.

The group will develop communication skills, social skills, and confidence during activities which may include art, cooking, personal social development activities, and a range of volunteering opportunities specific to the group.

Course Entry Requirements

- Students must be working towards SCQF level 3 in English/Numeracy and want to continue their studies in further education
- Students must be working towards independence

Progression Pathways

- Full Time Cityworks Programme
- Full Time Development Programme
- Mainstream college courses in vocational areas of choice

Employment Routes

Generally, this course encourages students to apply to a range of Further Education mainstream courses.

Course Outline

* This course is predominately aimed at students from non-mainstream educational establishments and specialist units *

The aim of this course is to assist students with ASD to make a successful transition from school to Further Education and training. The experienced and qualified staff have a range of generic and subject specific expertise enabling them to provide a broad curriculum which meets the needs of a wide range of individuals and ensures that students are fully prepared for their next step.

The group will develop communication skills, social skills, negotiation skills and confidence. Activities during the course will include communication, critical thinking, problem solving and creative skills. This may include Expressive Arts, Film & Media and a range of community projects designed to suit the group.

Course Entry Requirements

Students must have a diagnosis of ASD, working at or towards Level 4 in English and Maths and want to continue their studies in Further Education.

Progression Pathways

- Application for full time transition course
- Mainstream college courses in vocational areas of choice

Employment Routes

Generally this course encourages students to apply to a range of Further Education mainstream courses.

CITY OF GLASGOW
COLLEGE

CAMPUS

City

ATTENDANCE PATTERN

Tuesday

9.30am - 12.00pm

COURSE AWARD

SCQF Level 3

Credit Points 18

UNITS COVERED

- Core Skills
- Communication
- Personal & Social Development
- Skills for Life and Work

HOURS OF LEARNING

150

CAMPUS

Easterhouse

ATTENDANCE PATTERN

Wednesday

9.30am - 3.30pm

COURSE AWARD

SCQF Level 3/4

Credit Points 6

UNITS COVERED

- Capturing Digital Images
- Music Technology in Context

HOURS OF LEARNING

120

Sound Engineering & Photography

Course Outline

* This course is predominately aimed at students from non-mainstream educational establishments and specialist units who have a learning disability/autism and require additional support with their learning *

The aim and focus of this one-day programme is to give students who are leaving school this year and are working at SCQF Level 3 /4, the opportunity to experience various units. The course is based in Easterhouse Campus/ Platform recording studios and focuses on providing opportunities for experiential learning.

This exciting programme allows young students the opportunity to work with staff from Glasgow Kelvin College mainstream Music department within neighbouring Platform recording studios. You will have the opportunity to develop and record your own music and have musicians guide you on how to edit using the Macs and software. In the afternoon you will plan journeys, navigating the community and documenting this for your photography portfolio. You will have the opportunity to explore the colleges 3D printers and VR headsets.

Course Entry Requirements

Students must be working at Level 3/4

Progression Pathways

FT Courses -

- Pathways
- Platform to Employment
- Steps to Employment or Working towards Independence

Employment Routes

Explore jobs in the music industry through supported employment or progression through Pathways.



Level 4 - 7



Course Outline

ESOL (English for Speakers of Other Languages) is aimed at students who have a first language other than English. There will be an intensive focus on improving English for work and study.

Lecturers will use a variety of teaching methods such as role play and group work to enable you to improve your understanding of English and your speaking and writing. These skills will increase your confidence in everyday life and will help you communicate in the home, with your family, in social situations, and at work.

We will introduce opportunities in different vocational areas of the college like Sport, Hospitality, Engineering, Care, Business, IT, etc.

Course Entry Requirements

You must:

- Be working at National 4/5 level

Progression Pathways

Dependent on your attendance, behaviour, and achievement, you will be guaranteed a place on a full-time or part-time college ESOL course.

You will also have the option on being guaranteed a place on one of our wide range of ESOL Transitions courses which offer subjects like Beauty, Automotive, Early Years, Social Care, alongside ESOL classes.

Employment Routes

You will be given support with Guidance, CVs, job searches and interviews for progression into employment is part of every course at GCC.

CAMPUS

Anniesland and Cardonald

ATTENDANCE PATTERN

Tuesday and Thursday
1.30pm - 4.00pm

COURSE AWARD

SCQF Level 4/5
Credit Points 24

UNITS COVERED

You will be studying at SCQF Level 4/ 5 and on successful completion of the course will achieve:

- ESOL for Everyday Life at National 4/ 5
- Optional Units (Chosen by the college)
- Living in Scotland at National 4/5
- Digital Skills at National 4/5
- ESOL for Employability at National 4/5

HOURS OF LEARNING

155

CAMPUS

Enterprise Academy

ATTENDANCE PATTERN

Tuesday

9.15am - 10.45am

COURSE AWARD

SCQF Level 4/5

Credit Points 16

UNITS COVERED

This is not a Full Award

- Accommodation Operations
- Basic Customer Service Skills
- Enterprise Activity
- Introduction to Hospitality

HOURS OF LEARNING

80

Introduction to Hotel & Cafe Skills

Course Outline

*** This course is predominately aimed at students from non-mainstream educational establishments and specialist units ***

Introduction to Hotel and Cafe Skills offers young people with an interest in Hospitality the opportunity to develop their understanding of this particular area. By using the innovative Bedroom, Café and Office areas, students will be introduced to 3 of the main areas of a working Hotel and learn about how to run a café.

Classes will focus on a fuller understanding of the hospitality industry and the hotel trade in particular. During the course there will be a number of visits to different hotels and cafés to develop a fuller, realistic understanding of the different roles of staff in the hospitality industry.

Course Entry Requirements

- Students should show a keen interest in working in the Hospitality industry.
- No formal qualifications are necessary.
- Students should be working at National 4 in literacy and numeracy as there will be written elements of the course.

Progression Pathways

Students will be well suited for applying for the Barista course in the Enterprise Academy at Parkhill.

Employment Routes

- SVQ Food Preparation
- Working in a Professional kitchen
- Hospitality Industry





Energy, Engineering, Construction & Manufacturing

Level 1 - 3



CAMPUS
Anniesland

ATTENDANCE PATTERN
Thursday
1.00pm - 3.30pm

COURSE AWARD
SCQF Level 3
Credit Points 6

UNITS COVERED
• Making an Item

HOURS OF LEARNING
80

Creative Wood Working

Course Outline

*** This course is predominately aimed at students from non-mainstream educational establishments and specialist units ***

On this course students will develop the skills required to produce and finish a range of wooden items.

Students will have the opportunity to safely use a variety of hand and / or power tools. Health and safety will also be covered as part of the course.

Students will be issued with PPE such as a dustcoat, protective footwear and eye protection. Students will be based within the busy joinery workshop section of the college and will regularly interact with mainstream students, apprentices and staff.

Course Entry Requirements

Students must have a learning disability, be able to cope in a busy adult / workshop environment, be willing to work with others and on their own, have good manual dexterity and hand / eye co-ordination.

Progression Pathways

Further Supported Education college courses leading to mainstream or employability options.

Employment Routes

Employability courses such as Project Search or other college pathways or training / apprenticeship options.

Course Outline

*** This course is predominately aimed at students from non-mainstream educational establishments and specialist units ***

This course offers students with Learning Disabilities the chance to work in a Trade specific workshop area alongside Trade apprentices.

Students will be offered a realistic learning experience of the skills below:

- Surface preparation
- Application of paint by roller and brush
- Sign work
- Stencilling
- Basic paperhanging
- Broken colour
- Health and Safety

Course Entry Requirements

Students must have a learning disability, be able to cope in a busy adult / workshop environment, be willing to work with others and on their own, have good manual dexterity and hand / eye co-ordination.

Progression Pathways

Further Supported Education college courses leading to mainstream or employability options.

Employment Routes

Employability courses such as Project Search or other college pathways or training / apprenticeship options.



CAMPUS
Anniesland

ATTENDANCE PATTERN

Friday
9.30am - 12.00pm

COURSE AWARD

SCQF Level 3
Credit Points 9

UNITS COVERED

- Preparing and Painting Surfaces
- Decorative Painting

HOURS OF LEARNING

90



CAMPUS

Blindcraft Industries

ATTENDANCE PATTERN

Monday to Friday
9.00am - 12.00pm

One group of 5 per day

COURSE AWARD

SCQF Level 3/4
Credit Points 6

UNITS COVERED

Students are given genuine work experience alongside an educational qualification in the form of two units from the SVQ Performing Manufacturing Operations.

The SVQ units are:

- Comply with Statutory Regulations and Organisational Safety Requirements
- Carry out Product Assembly Operations

HOURS OF LEARNING

108

RSBI Year 1 Furniture Assembly

Course Outline

*** This course is predominately aimed at students from non-mainstream educational establishments and specialist units ***

Students follow this option for one morning per week over the academic year and all delivery takes place in a “real life” factory environment. Students will use a variety of manual hand tools and drills to contribute to the making of furniture for customers across the business. Groups contain five students and are well supervised within the factory.

Course Entry Requirements

- An enthusiasm for practical skills
- The ability to work with tools
- Work in a safe manner

Progression Pathways

TBC

Employment Routes

Previous students will be favourably considered by RSBI when vacancies arise within the business.

Level 4 - 7



CAMPUS
Anniesland

ATTENDANCE PATTERN
Tuesday and Thursday
1.30pm - 4.00pm

COURSE AWARD
SCQF Level 4
Credit Points 30

UNITS COVERED

Automotive Skills:

- The Garage
- The Car
- The Technician
- Vehicle Modification Project

Work Based Challenge Unit

- Work Based Skills Challenge

HOURS OF LEARNING
155

Automotive Skills

Course Outline

This course has been designed to introduce you to the Automotive industry and is an ideal introduction programme if you are considering further studies or a career within this sector. Completion of this course offers progression into further education or the potential of moving directly into employment within the automotive sector.

You will develop the knowledge, understanding and practical skills which are required within the industry, as well as acquiring transferable skills such as health and safety.

Course Entry Requirements

Students should be working at senior phase level and have a clear interest in the subject area.

You must have:

- Nat 4 Math's and/or English

The course is predominantly workshop based involving problem-solving skills there will be a selection process for a place. You will be required to undertake practical dexterity and mechanical aptitude tests along with a short interview to ensure that you are suited for the programme.

Progression Pathways

On successful completion of this course, you will have the opportunity to be treated as an internal applicant. This will also be dependent on your achievement along with attendance and commitment to this course.

You may progress onto Further education on the following full-time programme at the Anniesland Campus:

- City and Guilds Diploma in Introduction to Vehicle System Maintenance

Employment Routes

There may be opportunities to progress into a Modern Apprenticeship in the Automotive Sector. This course also introduces you to the skills for a career as motor vehicle technician, auto electrical technician, roadside assistance engineer and part distribution operative.



CAMPUS

Eastend

ATTENDANCE PATTERN

Tuesday and Thursday
1.30pm - 4.00pm

COURSE AWARD

SCQF Level 4
Credit Points TBC

UNITS COVERED

- Work-Based Skills: Construction
- Construction Craft and Technician
- Work-Based Skills Challenge
- Understanding Industry
- Personal Development: Self and Work

You will also undertake three introductory practical units which will be selected to suit a project identified by a partner industry employer. The trade areas for selection are: Joinery, Brickwork, Painting & Decorating or Roof Slating & Tiling.

HOURS OF LEARNING

150

Construction

Course Outline

The Course includes practical construction crafts units in 5 trade areas. It is a suitable level of entry for candidates with an aptitude for practical crafts work who can cope with demands at National 4. You will learn a variety of skills in the trade specific units.

In addition, you will develop skills and attitudes that enhance employability, not just in the Construction industry but in employment generally.

Included in the course is the Work-Based Challenge Unit which will require you to draw on technical skills developed through the course and apply these in a work based situation.

The course will have the involvement of an Industry partner in developing and evaluating the challenge.

Course Entry Requirements

There are no entry criteria for this award. Students must have a genuine interest in construction when applying.

Progression Pathways

A one year full time NPA in a specific trade career path e.g.NPA in:

- Joinery
- Painting
- Roofing
- Bricklaying.
- SVQ3 Craft Occupation (requires employment)

Employment Routes

Career progression to Pre-Apprenticeship courses in Bricklaying, Joinery, Roof Slating and Tiling, and Painting.



Course Outline

The National Progression Award (NPA) in Building Service Engineering will provide you with the knowledge and understanding of building services engineering and the course will allow you to develop transferable skills such as problem solving, planning, organisational and communication skills.

Course Entry Requirements

Students would normally be expected to have attained Maths/English at SCQF level 3 or equivalent.

Progression Pathways

A National Certificate in Building Services Engineering, Electrical Installation, Plumbing, Mechanical Engineering or Manufacturing Engineering.

Employment Routes

- Modern Apprenticeships in Heating and Ventilation Service and Maintenance
- Refrigeration and Air Conditioning
- General employment in the engineering or construction industry

CAMPUS

Springburn

ATTENDANCE PATTERN

Tuesday and Thursday
1.30pm - 4.00pm

COURSE AWARD

SCQF Level 4
Credit Points 24

UNITS COVERED

- Introduction to Safe Working Practices
- Introduction to Energy
- Introduction to Science
- An Introduction
- Employability Skills

HOURS OF LEARNING

160



CAMPUS
Anniesland

ATTENDANCE PATTERN
Wednesday and Thursday
9.00am - 4.00pm

COURSE AWARD
SCQF Level 5
Credit Points 48

UNITS COVERED

- Engineering Work Based Challenge
- Understanding Industry
- Maths Craft 1
- Health and Safety: Engineering
- Engineering Project
- Pipework Skills
- Ship Construction Skills
- Engineering Workshop Skills

HOURS OF LEARNING
320

BAE Systems Customised Engineering Award

Course Outline

Are you passionate about engineering and looking for hands-on experience in the exciting field of shipbuilding? This course, developed in partnership with BAE Systems, offers you the chance to work on real-world engineering projects with a focus on shipbuilding. This course will provide you with a broad, practical introduction to engineering concepts while laying a solid foundation for further study or a career in the shipbuilding industry and related engineering fields.

What you'll Gain:

- **Practical Projects in Shipbuilding:** where you'll apply engineering principles to solve real challenges.
- **Key Engineering Skills:** Develop crucial skills in analysis, problem-solving, and the safe use of tools and equipment in an engineering context.
- **Hands-On Learning:** gain direct experience working on engineering tasks that prepare you for industry.

Why This Course?

- **Exclusive Industry Insight:** Gain invaluable insight into the shipbuilding industry, visiting BAE Systems and gaining expert guidance.

Course Entry Requirements

You must have a clear interest in the subject area along with:

- Nat 4 Maths and English
- Nat 4 Application of Maths may be considered

Ideal students will be in S5/6

Progression Pathways

On successful completion of the course along with good attendance and commitment to this course, you will be given the opportunity of internal progression on to one of the following courses:

- NC or HNC/HND in an engineering or related subject or discipline
- Upon completion, you will be offered a guaranteed interview with BAE Systems.

Employment Routes

Variety of careers in the engineering industry.

Course Outline

Are you in S4-S6 and are interested in a career within Engineering or Shipbuilding but not sure where to start? Why not join us on a bespoke NPA programme which has been designed to give you an insight into the Fabrication and Welding sector while working towards a Level 5 National Progression Award. This programme, delivered over one academic year will help:

- Raise awareness of shipbuilding and the careers you can have within this sector
- Provide work-based learning offer with taster sessions and work experience opportunities directly with BAE Systems
- Embed contextualised learning to enhance outcomes in relevant subject areas
- Provide work-based learning projects to develop meta skills

Course Entry Requirements

Must be working towards or hold 5 National 4s which must include English, Maths (Applications of Maths will be accepted), Science or Technical Subject.

Places on this programme will be offered following an interview.

Progression Pathways

Graduates from of this course can progress directly onto a variety of Mechanical Engineering Programmes within City.

Employment Routes

On successful completion of the course, you will be guaranteed an interview for one of BAE Systems Steelwork Apprenticeship roles, commencing August 2026.

CITY OF GLASGOW COLLEGE

CAMPUS

City

ATTENDANCE PATTERN

Tuesday and Thursday
9.00am - 4.00pm

COURSE AWARD

SCQF Level 5
Credit Points 48

UNITS COVERED

- Engineering Project
- Fabrication Processes
- Health and Safety: Engineering
- Manual Metal Arc (MMA) Welding Skills
- Mathematics: Craft 1
- Ship Construction Skills
- Understanding Industry

HOURS OF LEARNING

366

CAMPUS
Springburn

ATTENDANCE PATTERN
Tuesday and Thursday
1.30am - 4.00pm

COURSE AWARD
SCQF Level 5
Credit Points 40

UNITS COVERED

- Producing Mechanical Engineering Drawings Using a CAD System
- Producing CAD Models (Drawings) Using a CAD System
- Complying with Statutory Regs and Organisational Safety Requirements
- Producing Components Using Hand Fitting Techniques
- Working Efficiently and Effectively in Engineering
- Preparing and Using Lathes for Turning Operations
- Using and Interpreting Engineering Data and Documentation
- Preparing and Using Milling Machines

HOURS OF LEARNING
160

158

Performing Engineering Operations

Course Outline

The Scottish Vocational Qualification (SVQ) in Performing Engineering Operations (PEO) at SCQF level 5 allows students to demonstrate competence in job related skills in their particular area of work and expertise.

The qualification is based on the National Occupational Standards set and published by Enginuity, the sector skills council for the sector.

Upon successful completion, students will gain an internationally recognised qualification which guarantees that they have the skills, knowledge and abilities required to carry out their role successfully.

A rolling program model, allowing first-year students to join sessions with returning second-year students. Units could be completed in any sequence based on available resources, ensuring flexibility and continuity for all learners.

The PEO in Engineering will take 2 years to complete attending 2 half days per week.

Course Entry Requirements

Three National 4 qualifications. For this course, if English is not your first language:

- You need to have SQA ESOL National 5 or equivalent
- If you do not have a formal ESOL qualification but your language skills meet this level, you should apply for your course and then contact our Admissions team to organise an internal language assessment here at the College.

Progression Pathways

- NC in Mechanical Engineering/ Engineering related subjects
- Modern Apprenticeship in Engineering Disciplines

Employment Routes

- Engineering Related Industries

Course Outline

The National 5 Practical Electronics course will provide you with the opportunity to complete practical projects and investigative tasks.

You will gain a broad practical introduction to electronics and a solid foundation for further study or a career in electronics, electrical engineering and related disciplines.

You will develop knowledge and understanding of key concepts in electronics and apply these in a range of contexts.

In addition, you will learn a range of practical skills in electronics, including skills in analysis, problem-solving, design skills, the safe use of tools and equipment, and evaluating products and systems.

The Practical Electronics course provides a valuable complementary practical experience if you are already studying engineering science, physics or other science courses.

Course Entry Requirements

You must have a clear interest in the subject area along with:

- Nat 5 Maths and English

We may also consider your application if you have Nat 5 Application of Maths

Progression Pathways

On successful completion of the course along with good attendance and commitment to this course, you will be given the opportunity of internal progression on to one of the following courses:

- National Certificate (NC) Level 6
- HND Electronics (this would require you to have your National 5 maths or physics).

Employment Routes

This course provides a solid foundation for those considering a career in electronics, electrical engineering, and related disciplines. It contributes not only to manufacturing, but to other sectors such as finance, telecommunications, weather forecasting and renewable energy.



CAMPUS
Cardonald

ATTENDANCE PATTERN

Tuesday and Thursday
1.30am - 4.00pm

COURSE AWARD

SCQF Level 5
Credit Points 24

UNITS COVERED

- Circuit design
- Circuit simulation
- Circuit construction

Course assessment:

The course assessment has two components: Question Paper & Practical Activity.

HOURS OF LEARNING

155

CAMPUS

City

ATTENDANCE PATTERN

Tuesday and Thursday
1.30am - 4.00pm

COURSE AWARD

SCQF Level 5
Credit Points 18

UNITS COVERED

- Computer Aided Drafting: An Introduction
- Construction Materials: An Introduction
- Construction Technology: Groundworks and Substructure
- Sustainability in the Built Environment
- Sustainable Design for Architecture

HOURS OF LEARNING

155

Introduction to Building Design and Civil Engineering

Course Outline

This course provides an insight to the technical and professional side of the construction sector. You'll gain an appreciation of a different aspect of this highly rewarding industry.

You'll explore the range of work carried out in the construction industry and the roles which contribute to a sustainable built environment. You'll investigate the diverse architectural styles found in the UK and consider the principals involved in building design. You'll consider what influences building design. Working collaboratively, you'll produce a project plan and use a variety of digital tools and processes, to create concept ideas to meet a client's brief.

You'll explore sustainability in global, national and local communities. You'll investigate the basic techniques and methods commonly adopted in sustainable building design and construction. You'll focus on employability skills to enhance your job prospects including good timekeeping, team working, quality checks and health & safety awareness.

Course Entry Requirements

This course will suit students who hold Maths and English at National 4 and either a technical subject e.g. Graphics (preferred) or a Science

You will be expected to exhibit good communication skills and be willing to work well as part of a team. You should be able to act on instructions and be committed to working in a manner which supports health and safety at work.

Progression Pathways

This course will allow students to make a more informed choice of progression within this highly rewarding industry. Graduates of this course will be able to progress onto Built Environment NPA at Level 6, before progressing onto HNC and HND.

Employment Routes

This course can provide an ideal foundation for a diverse range of carers out with the usual trades route in the Construction sector. With further qualifications you could embark on a career in Construction Management, Architectural Technology or Building and Civil Engineering.



Course Outline

The National Certificate is aimed at providing students with an introductory level of knowledge in the basic principles of Building Services Engineering. The course is 1 year Full-Time.

The course focus is on the design, installation, maintenance and management of a building services systems i.e. Heating, Ventilating and Air Conditioning, Electrical & Plumbing.

Course Entry Requirements

- Three National 5 qualifications at grade C to include Maths or Physics
- Or suitable construction qualifications and/or experience
- NQ L5 courses in related subjects

Progression Pathways

Upon successful completion the student receives a National Certificate in Building Services Engineering and possible progression route to the Higher National Certificate in Building Services Engineering.

Employment Routes

- Modern Apprenticeships in Heating and Ventilation
- Service and Maintenance
- Refrigeration and Air Conditioning
- General employment in the engineering or construction industry.

CAMPUS

Springburn

ATTENDANCE PATTERN

Tuesday and Wednesday
9.00am - 4.00pm

COURSE AWARD

SCQF Level 6
Credit Points 12

UNITS COVERED

Building Services:

- Engineering Science
- Engineering Technology
- Design Project
- Construction Technology and Design
- Heating & Plumbing Technology

Introduction to:

- Ventilation System Design
- Basic Electrical Technology
- Industry Software
- CAD, Health, Safety and Welfare in the Building Services Engineering Industry
- Air Conditioning systems
- Understanding Refrigeration systems
- Mathematics: Technician 1
- Engineering Software in BSe

HOURS OF LEARNING

270



B

A

D

E

240

300

140

+380

555

335

105

100

100

175

175

109

160

40

20

153

150

435

1547

24

25

26

27

28

29

285

28

19

20

14

15

16

17

18

19

20

21

22

23

24

25

26

27

28

29

30

31

32

33

34

35

36

21

20

19

18

17

16

15

14

13

12

11

10

9

8

7

6

5

4

3

2

1

0

1

2

3

4

5

6

7

8

9

10

11

12

13

14

15

16

17

18

19

20

21

22

23

24

25

26

27

28

29

30

31

32

33

34

35

36

37

38

39

40

41

42

43

44

45

46

47

48

49

50

51

52

53

54

55

56

57

58

59

60

61

62

63

64

65

66

67

68

69

70

71

72

73

74

75

76

77

78

79

80

81

82

83

84

85

86

87

88

89

90

91

92

93

94

95

96

97

98

99

100

101

102

103

104

105

106

107

108

109

110

111

112

113

114

115

116

117

118

119

120

121

122

123

124

125

126

127

128

129

130

131

132

133

134

135

136

137

138

139

140

141

142

143

144

145

146

147

148

149

150

151

152

153

154

155

156

157

158

159

160

161

162

163

164

165

166

167

168

169

170

171

172

173

174

175

176

177

178

179

180

181

182

183

184

185

186

187

188

189

190

191

192

193

194

195

196

197

198

199

200

201

202

203

204

205

206

207

208

209

210

211

212

213

214

215

216

217

218

219

220

221

222

223

224

225

226

227

228

229

230

231

232

233

234

235

236

237

238

239

240

241

242

243

244



Course Outline

This HNC course leads to a qualification recognised by employers and professional bodies within the building services engineering sector.

The course prepares the student for a range of technical, professional and management careers in Building Services Engineering.

The student will become knowledgeable with methods relating to the design, installation, maintenance and management of HVAC systems within buildings and understand the roles and responsibilities such a profession places on the consumption and management of both existing and future energy sources.

Course Entry Requirements

- A pass in Higher Maths or Physics. Or pass in any Higher subject (grade C or above) with National 5 Maths.
- A suitable SVQ qualifications and/or experience.
- NQ L6 in related subject or successful achievement of an Foundation Apprentice Engineering award.

Progression Pathways

Upon successful completion the student receives the Higher National Certificate in Building Services Engineering and the opportunity to articulate to year 2 of an appropriate degree course.

The qualification entitles the learner to apply for membership of professional bodies, such as CIBSE, who are registered with The Engineering Council, for the designated title of 'Engineering Technician' (Eng.Tech.).

Employment Routes

- Modern Apprenticeships in Heating and Ventilation
- Service and Maintenance
- Refrigeration and Air Conditioning
- General employment in the engineering or construction industry

CAMPUS
Springburn

ATTENDANCE PATTERN

Monday and Tuesday
9.00am - 4.00pm

COURSE AWARD

SCQF Level 7
Credit Points 12

UNITS COVERED

- Design Principles and Application
- Analytical Methods
- Health and Safety in the Building Services Industry
- Building Services Engineering Science
- Building Services Engineering Project Management
- Building Services Engineering: Graded Unit 1

HOURS OF LEARNING

270

CAMPUS
Springburn

ATTENDANCE PATTERN
Monday and Tuesday
9.00am - 4.00pm

COURSE AWARD
SCQF Level 7
Credit Points TBC

UNITS COVERED

- DC/AC Principles
- Analogue Electronic Principles
- Combinational Logic
- Sequential Logic
- Electronic Testing Skills
- Engineering Mathematics 1
- Communication: Practical Skills
- High Level Engineering Software
- Electrical Networks and Resonance
- Power Electronics
- Graded Unit

HOURS OF LEARNING
160

HNC Electronic Engineering

Course Outline

The Higher National Certificate (HNC) in Electronic Engineering is a unique opportunity to complete a recognised qualification within 1 year and providing you with the opportunity to progress to HND Level or University.

This course can enhance your potential prospects for employment in engineering and create opportunities for aspiring engineers and technicians. You will study the fundamental concepts of electronic engineering including AC and DC Principles, Analogue Electronic Principles, Combinational and Sequential Logic, Electronic Testing Skills and programming.

You will gain skills in subjects such as electronic measuring and diagnosis, PCB design and programming and other industry essential subjects. Learning will take place within the classroom and purpose-built engineering laboratories.

Course Entry Requirements

You must have, or are studying:

- Higher Maths or Higher Physics

Progression Pathways

You might go on to do:

- Higher National Diploma (HND) Electronic Engineering
- University (Subject to university entry criteria)

Employment Routes

- Employment as a junior technician or engineering apprentice



Course Outline

The Higher National Certificate (HNC) in Mechanical Engineering is a unique opportunity to complete a recognised qualification within 1 year and providing you with the opportunity to progress to HND Level or University. This course can enhance your potential prospects for employment in engineering and create opportunities for aspiring engineers and technicians.

You will study the fundamental concepts of mechanical engineering including dynamics, statics, thermodynamics and fluid mechanics. You will gain skills in subjects such as CAD, engineering drawing and other industry essential subjects and you will learn within the classroom, CAD laboratory and a purpose built engineering laboratory.

Course Entry Requirements

You must have, or are studying:

- Higher Maths or Higher Physics

Progression Pathways

You might go on to do:

- Higher National Diploma (HND) Mechanical Engineering
- University (Subject to university entry criteria)

Employment Routes

- Employment as a junior technician or engineering apprentice

CAMPUS
Springburn

ATTENDANCE PATTERN

Monday and Tuesday
9.00am - 4.00pm

August to June
(continuous attendance)

COURSE AWARD

SCQF Level 7
Credit Points 96

UNITS COVERED

- Dynamics
- Thermofluids
- Pneumatics & Hydraulics
- Statics and Strength of Materials
- Materials Selection
- Engineering Mathematics 1
- Communication : Practical Skills
- Quality Management: An Introduction
- Engineering Principles
- Computer Aided Design
- Engineering Drawing
- Graded Unit 1

HOURS OF LEARNING

432



Foundation Apprenticeships

What is a Foundation Apprenticeship?

Foundation Apprenticeships are a work-based learning opportunity for senior-phase secondary school students. Typically lasting two years, students begin their Foundation Apprenticeship in S5, however, there are some options to complete over 1 year starting in S6.

Young people spend time out of school at college or with a local employer, and complete the Foundation Apprenticeship alongside their other subjects like National 5s and Highers. It's a chance to get valuable work experience and gain an industry recognised qualification. It also lets you try out a career you are interested in while you're still at school.

Who is it for?

Foundation Apprenticeships are for students entering 5th year and 6th year. You must have the ability to study at SCQF level 6 (Higher equivalent) in a vocational setting, and meet the entry requirements of the course. Attainment is measured by ongoing assessment in college and in the workplace.

What qualifications will I gain?

On successful completion of the course, you will achieve a Joint Qualification Certificate for the Foundation Apprenticeship in your chosen subject. This is a group Award at SCQF level 6, which comprises a National Progression Award (NPA) or National Certificate (NC) and a Scottish Vocational Qualification (SVQ).

Glasgow's three colleges, Glasgow Kelvin College, Glasgow Clyde College and City of Glasgow College have formed a partnership to deliver Foundation Apprenticeships to students across Greater Glasgow.

Where can it take me?

You can use your Foundation Apprenticeship to get in to a Modern Apprenticeship, Graduate Apprenticeship, or straight to work. It also counts as one of your entry qualifications in to all colleges and Universities in Scotland.

“ The Foundation Apprenticeship Programme is a key part of Network Rail's commitment to Engineering Engagement.

It provides us with a unique opportunity to share our experience with young engineers of the future, and give them an insight into the breadth of skills we employ in the rail industry.

In addition to technical demonstrations and site visits, we also get to provide guidance and information about opportunities at Network Rail, like our award winning apprentice and graduate schemes, to ensure we have the best talent pipeline possible.



Paul Murphy
Engineering Engagement Rep
Network Rail



CAMPUS
Springburn

ATTENDANCE PATTERN

Tuesday and Thursday
1.30pm - 4.00pm

COURSE AWARD

SCQF Level 4
Credit Points TBC

UNITS COVERED

- The Car
- The Garage
- The Technician
- Vehicle modification Project
- Using tools and machinery

HOURS OF LEARNING

160

Automotive

Course Outline

The Course has been designed to provide an introduction to the automotive industry and a progression route into further education or for moving directly into training or employment within the automotive industry. The overall purpose of the Course is to ensure that students develop practical skills, knowledge and understanding and employability skills needed within the automotive industry as well as developing generic transferable employability skills contributing to good workplace housekeeping, such as:

- awareness of Health and Safety procedures
- developing basic practical skills
- removal and replacement of vehicle components
- understanding how components work

Course Entry Requirements

There is no entry criteria for this other than a genuine interest in the subject.

Progression Pathways

Links with Industry employers through the college links, as well as progression to Automotive industries within the Automotive Department.

Employment Routes

- Some employers of apprenticeships in Glasgow include Ford, Audi and Arnold Clark
- Jobs in Engineering are expected to rise around 2,500 jobs per year in Scotland until 2026
- GTG – Glasgow Training Group (the Arnold Clark Group) carry out interview and entry testing throughout the year.



CAMPUS

City

ATTENDANCE PATTERN

1 Year: Tuesday or Thursday
1.30pm - 4.00pm

Winter Leaver:

Monday or Wednesday
9.30am - 4.00pm

COURSE AWARD

SCQF Level 4
Credit Points 27

UNITS COVERED

- Understanding Industry
- Personal Development: Self and Work
- Construction Crafts: Site Carpentry and Bench Joinery
- Construction Crafts: Employability Skills
- Construction Crafts: Decorative Painting
- Construction Theory
- Construction Practical
- Work-based Skills Challenge

HOURS OF LEARNING

270

Construction

Course Outline

The Foundation Apprenticeship in Construction combines a mixture of classroom, practical and employability-focused learning. This course will help you understand more about the industry, the various jobs available, and how to work safely within a construction environment.

You will learn alongside like-minded students and gain skills in confidence, communication, time management and problem solving. You will get to use our state-of-the-art workshop facilities to gain the technical and practical skills necessary to move closer to a career in construction.

Throughout the year you will work with industry-leading companies where you will get to visit their sites, work on real-life projects and gain vital employability skills for the future

Course Entry Requirements

- Students should want to learn more about the construction industry and/or be considering a career in the sector.
- It is essential that you have achieved or are currently working towards National 4 Literacy and Numeracy
- This course is open to S4 - S6 students

*Students intending to leave school early can apply for our Winter Leavers programme studied over half of the year. Achievers will be guaranteed an offer for Construction courses starting in January 2026.

Progression Pathways

Upon completion of this course, you could:

- Progress on to a specific trade programme at college
- Earn as you learn with a Modern Apprenticeship
- Use your qualification and skills to go straight into a job

Employment Routes

This course will provide you with a sound understanding of the career paths, entry requirements and working conditions featured within the construction industry. With further specialised training, you can pursue a variety of careers in areas such as bricklaying, painting and decorating, plastering and carpentry and joinery.



**CAMPUS**

Cardonald

ATTENDANCE PATTERN

Tuesday and Thursday
1.30pm - 4.00pm

COURSE AWARD

SCQF Level 4
Credit Points 24

UNITS COVERED

- Personal Development: Self and Work
- Understanding Industry
- Carpentry and Bench Joinery: An Introduction
- Construction Crafts: Carpentry and Joinery Techniques
- Construction Crafts: Site Carpentry and Bench Joinery

HOURS OF LEARNING

160

Construction Crafts

Course Outline

The NPA Construction Craft and Technician at SCQF level 4 course will develop your practical skills and enable you to demonstrate your ability to complete common tasks within the construction industry.

It will help you gain an understand of the construction industry and will assist you to make informed choices regarding a career in construction.

This course will also provide you with the opportunity to develop your personal development within the industry and participate in project work, which will help to prepare you for the workplace. You are required to work independently and in a team.

Course Entry Requirements

You must have:

- An interest in working in the construction industry
- 3 passes at National 4, which should include Maths and a Technical subject
- Some aptitude for graphical forms of communication, as you will be required to read basic drawings
- Ideal students will be in S5 or 6

Progression Pathways

On successful completion of this course, you will have the opportunity to be treated as an internal applicant. This means that should you wish to progress onto the next level you will not have to complete a formal application form. You might go on to do:

- NPA in Carpentry and Joinery SCQF 5
- NC Built Environment
- Pre apprentice electrician
- Pre apprentice plumbing
-

The level you might enter would depend on the level and relevance of your other qualifications.

Employment Routes

A Modern Apprenticeship in construction such as bricklaying or joinery. You would train on the job, on a building site or workshop, and off the job at college. Apprenticeships usually last for three years.

Course Outline

Combining a mixture of classroom, practical and employability-focused learning, this course seeks to empower female identifying students to engage in the construction sector. This course will help you understand more about the industry, the various jobs available, and how to work safely within a construction environment.

You will learn alongside like-minded students and gain skills in confidence, communication, time management and problem solving. You will get to use our state-of-the-art workshop facilities to gain the technical and practical skills necessary to move closer to a career in construction

Throughout the year you will work with industry-leading companies where you will get to visit their sites, work on real-life projects and gain vital employability skills for the future.

Course Entry Requirements

- Students should want to learn more about the construction industry and/or be considering a career in the sector.
- It is essential that you have achieved or are currently working towards National 4 Literacy and Numeracy
- This course is open to S4 - S6 students

Progression Pathways

Upon completion of this course, you could:

- Progress on to a specific trade programme at college
- Earn as you learn with a Modern Apprenticeship
- Use your qualification and skills to go straight into a job

Employment Routes

This course will provide you with a sound understanding of the career paths, entry requirements and working conditions featured within the construction industry.

With further specialised training, you can pursue a variety of careers in areas such as bricklaying, painting and decorating, plastering and carpentry and joinery.

CAMPUS

City

ATTENDANCE PATTERN

Friday

1.30pm - 4.00pm

COURSE AWARD

SCQF Level 4

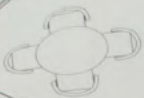
Credit Points 27

UNITS COVERED

- Understanding Industry
- Personal Development: Self and Work
- Construction Crafts: Site Carpentry and Bench Joinery
- Construction Crafts: Employability Skills
- Construction Crafts: Decorative Painting
- Construction Theory
- Construction Practical
- Work-based Skills Challenge

HOURS OF LEARNING

270



240

300

110

140

+380

555

14

15

16

17

18

19

20

21

22

23

24

25

26

27

28

29

30

31

32

33

34

35

36

37

38

39

40

41

42

435

153

175

109

160

40

20

1547

15

150

140

494

D

E

B

A

8

9

10

11

12

13

14

15

16

17

18

19

20

21

22

23

24

25

26

27

28

29

30

31

32

33

34

35

36

37

38

39

40

41

42

43

44

45

46

47

48

49

50

51

52

53

54

55

56

57

58

59

60

61

62

63

64

65

66

67

68

69

70

71

72

73

74

75

76

77

78

79

80

81

82

83

84

85

86

87

88

89

90

91

92

93

94

95

96

97

98

99

100

101

102

103

104

105

106

107

108

109

110

111

112

113

114

115

116

117

118

119

120

121

122

123

124

125

126

127

128

129

130

131

132

133

134

135

136

137

138

139

140

141

142

143

144

145

146

147

148

149

150

151

152

153

154

155

156

157

158

159

160

161

162

163

164

165

166

167

168

169

170

171

172

173

174

175

176

177

178

179

180

181

182

183

184

185

186

187

188

189

190

191

192

193

194

195

196

197

198

199

200

201

202

203

204

205

206

207

208

209

210

211

212

213

214

215

216

217

218

219

220

221

222

223

224

225

226

227

228

229

230

231

232

233

234

235

236

237

238

239

240

241

242

243

244

245

246

247

248

249

250

251

252

253

254

255

256

257

258

259

260

261

262

263

264

265

266

267

268

269

270

271

272

273

274

275

276

277

278

279

280

281

282

283

284

285

286

287

288

289

Course Outline

Students will work with TIGERS; learning about all aspects of construction. The course will explore practical tasks such as, joinery, bricklaying, painting and decorating and groundworks. Students will also learn about the importance of health and safety. Students will also learn about the importance of their overall wellbeing and take part in sessions that promote healthy body and healthy mind.

The Foundation Apprenticeship (FA) in Construction Skills is for pupils in S3, S4, S5 and S6 and typically takes one year to complete.

Course Entry Requirements

Interested students must have an interest in Construction and working at a good level in English and Maths. Students will then submit an application form to TIGERS and be invited in to meet staff at our Academy.

Progression Pathways

- Foundation Apprenticeship at SCQF Levels 5 or 6
- National Qualifications available in school and college
- Modern Apprenticeship
- Further Education
- Employment/Training opportunities

Employment Routes

- Groundworks
- Civil engineering
- Bricklaying
- Site Manager
- Building Surveyor

tigers

CAMPUS

TIGERS Training Academy

ATTENDANCE PATTERN

Days and times to suit

COURSE AWARD

SCQF Level 4/5

Credit Points 51

UNITS COVERED

Please refer to

www.tigersltd.co.uk for unit breakdown and further information.

- Brickwork: An Introduction
- Carpentry and Bench Joinery: An Introduction
- Construction Operatives: An Introduction
- Painting and Decorating: An Introduction
- Personal Development: Self and Work

Working on the following meta-skills will be included

- Self-management
- Social intelligence
- Innovation

HOURS OF LEARNING

510

CAMPUS

City

ATTENDANCE PATTERN

Tuesday and Thursday
1.30pm - 4.00pm

COURSE AWARD

SCQF Level 5
Credit Points 30

UNITS COVERED

Please refer to
www.cityofglasgowcollege.ac.uk/senior-phase/foundation-apprenticeships for unit breakdown and further information

HOURS OF LEARNING

300

Hospitality

Course Outline

The Foundation Apprenticeship in Hospitality combines a mixture of classroom, practical and employability-focused learning.

During this course you'll get a hands-on introduction to a variety of job roles in the hospitality sector. You'll learn about the importance of customer care, develop skills for working safely in a professional kitchen, and learn about the fundamentals of events planning and delivery.

This course will help you develop your employability skills including communication, teamwork, adaptability, and empathy for others. You'll consider the job roles and responsibilities of the people working within the industry, and explore what qualifications are required for these roles and progression routes.

You'll have the chance to put your skills to the test during work experience in our training Restaurant and Bistro whilst working on real-life projects alongside local employer partners.

Course Entry Requirements

Students should want to learn more about the hospitality industry and/or be considering a career in the sector. It is essential that you have achieved three National 4's including Maths and English and an additional National 5 qualification.

This course is open to S5 and S6 students

Progression Pathways

- Accelerated entry onto a Modern Apprenticeship in various industries
- NQ/NC at College (International Events Planning, Travel and Tourism, Hospitality Management)
- Straight into work

Employment Routes

This course is an ideal first step towards a career in Hotel Front of House, Restaurants, Bars or Tourist Attractions. This course will provide you with a multitude of transferable skills you could use in any job.

Course Outline

Across this Foundation Apprenticeship, you will explore elements that are essential to the success of any business. During this course, you will learn how to:

- Become an inspiring leader – someone who sets the tone, culture and direction of an organisation.
- Develop your leadership style – being able to understand how a business runs and how to influence decisions, one of the key assets to any organisation.
- Develop administration IT skills – the vital support that allows any company to function effectively.

You will:

- Develop a unique set of transferrable skills, knowledge and behaviours that can be applied to any business – no matter how big or small.
- Study areas that will help you appreciate business priorities such as Business structures, Business Strategy, Enterprise, Human Resources and Finance.
- Have the opportunity to put your skills into practice during a work placement with a local employer

Course Entry Requirements

This course would suit students who have an interest and enthusiasm for business, administration and IT. It is essential that you have achieved two National 5's including English. You should be able to work towards a Higher qualification. This course is open to S5 and S6 students.

Progression Pathways

Following completion of the Foundation Apprenticeship, you could progress directly onto a variety of HNC & HND programmes at City of Glasgow College. Modern and Graduate Apprenticeships are also available for this sector, and degree programmes are available at universities across Scotland.

Employment Routes

Should you wish to progress directly to employment you can apply for a range of entry-level jobs available in a variety of business areas including – business development, supply chain management, marketing, HR and administration. Upon completion of a Foundation Apprenticeship, you may gain advanced entry onto an associated Modern Apprenticeship.

www.cityofglasgowcollege.ac.uk

CITY OF GLASGOW
COLLEGE

CAMPUS

City

ATTENDANCE PATTERN

Tuesday and Thursday
1.30pm - 4.00pm

(Fast-track)

Tuesday and Thursday
1.30pm - 4.00pm

COURSE AWARD

SCQF Level 6
Credit Points 54

UNITS COVERED

Please refer to
[www.cityofglasgowcollege.ac.uk/
senior-phase/
foundation-apprenticeships](http://www.cityofglasgowcollege.ac.uk/senior-phase/foundation-apprenticeships) for
unit breakdown

HOURS OF LEARNING

440

**CAMPUS**

TIGERS Training Academy

ATTENDANCE PATTERN

1 full day: 9.00am to 3.30/4.00pm

2 half days: Morning

9.00am to 12.00/12.30 or

Afternoon

12.30pm to 3.30/4.00pm

COURSE AWARD

SCQF Level 6

Credit Points 51

UNITS COVERED

Please refer to

www.tigersltd.co.uk for
unit breakdown and further
information.

HOURS OF LEARNING

510

Business Skills

Course Outline

Business Skills is a 1 year delivery model tailored around students school timetable throughout S5 or S6. The course will cover the following topics;

- Differences between Management and Leadership and the impact of Human Leadership Approaches
- Digital Media and Marketing
- Company Culture, Vision and Values
- Business Operations and Strategic planning
- Wellbeing - healthy body and healthy mind
- Practical workplace skills within a business
- Contribute to Company Goals and work as part of a team to achieve business objectives

Course Entry Requirements

Interested students must be going into S5 or S6 and have achieved or working towards National 5 in English or other subjects at this level Students will then submit an application form to TIGERS and be invited in to meet staff at our Academy.

Progression Pathways

- University
- Modern Apprenticeship
- Graduate Apprenticeship

Employment Routes

- Law
- HR
- Finance
- Marketing
- Management
- Learning and Development
- PR
- Media
- Advertising

Course Outline

This course is designed to introduce you to the world of Financial Services through a blend of classroom learning and work experience. You will:

- Develop your communication, customer service and employability skills, and will create and maintain a personal budget whilst considering the issues surrounding borrowing and debt.
- Gain an appreciation of the importance of regulation within the sector and will be introduced to the various categories of risk management and how companies manage risk.
- Learn how the Financial Services sector contributes to the economy, the different institutions operating in the sector and the many job roles and career paths available.
- Have the chance to test your skills through a work placement with one of our leading employer partners.

This course can be studied over one or two years depending on individual circumstances and timetable requirements.

Course Entry Requirements

This course would suit organised, logical and detail orientated students. It is essential that you have achieved two National 5's including English. You should also be able to work towards a Higher qualification.

This course is open to S5 and S6 students.

Progression Pathways

Following successful completion of the Foundation Apprenticeship you can progress through HNC & HND to degree level qualifications in Universities across Scotland.

Modern and Graduate Apprenticeships are also available in the Financial Services Sector.

Employment Routes

Should you wish to progress directly into employment, you can apply for a range of entry-level jobs including: insurance, banking, business and accounts. Upon completion of a Foundation Apprenticeship, you may gain advanced entry onto an associated Modern Apprenticeship, Learning and Development.

CAMPUS

City

ATTENDANCE PATTERN

SDDM (Fast-track)

Tuesday and Thursday

1.30pm - 4.00pm

COURSE AWARD

SCQF Level 6

Credit Points 52

UNITS COVERED

Please refer to

[www.cityofglasgowcollege.ac.uk/senior-phase/](http://www.cityofglasgowcollege.ac.uk/senior-phase/foundation-apprenticeships)

[foundation-apprenticeships](http://www.cityofglasgowcollege.ac.uk/senior-phase/foundation-apprenticeships) for unit breakdown and further information.

HOURS OF LEARNING

500

CAMPUS

City

ATTENDANCE PATTERN

Fast Track

Tuesday and Thursday

9.30am - 4.00pm

COURSE AWARD

SCQF Level 6

Credit Points 61

UNITS COVERED

Please refer to

www.cityofglasgowcollege.ac.uk/senior-phase/foundation-apprenticeships for unit breakdown and further information

HOURS OF LEARNING

160

Course Outline

During this course, you will develop an understanding of how children develop, learn and play. You will also complete part of the SVQ qualification whilst on work placement.

You will learn about the perspectives of child development; consider the importance and benefits of play; investigate different methods of communication with children and young people; identify barriers to communication and how these can be overcome; examine the wellbeing and safety of children and young people and the adult's role in ensuring their safety; consider different types of risk, harm and exploitation, together with signs and symptoms that might indicate they are occurring.

The teaching and learning takes a student-centred approach, where you are encouraged to develop a critical approach to your studies. Your practical skills will be developed during your work placement.

Course Entry Requirements

This course would suit caring, considerate and compassionate students with a genuine desire to work in the childcare sector. It is essential that you have achieved Nat 5 English and are able to work towards a Higher qualification.

Due to the nature of the work placement students will be subject to a Protection of Vulnerable Groups (PVG) check.

Progression Pathways

Successful completion of this Foundation Apprenticeship allows you access to a varied progression path. You can undertake an HNC in Childhood Practice, Healthcare practice or Social Service, gain advanced entry onto an associated Modern Apprenticeship programme, or progress on to a diverse range of University degrees.

Employment Routes

Education, Health Workers and Social Services are all within the top five employing occupations in Scotland, and this is projected to continue to be the case for the foreseeable future. This course could be the first step to many careers within this sector including Early Learning and Childcare Practitioner, Primary School Teacher or working with parents and families.

Course Outline

This course is ideal if you want to work with children and young people in a care or education setting. It will give you the skills and knowledge to develop your career pathway and will provide you with practical experience working with children and young people through completion of a work placement.

The course will help you develop the skills and knowledge you require to work towards an SVQ 2 and to enter a career in children's social services. It will also help you gain the core units of the Modern Apprenticeship (MA) at SVQ level 2 in social services children and young people.

Please note that choosing to complete this qualification means you must commit to doing a 3-week block placement in June and commit to additional work placement time as required (this will be discussed with your school to best fit with your timetable).

Course Entry Requirements

You must have a clear interest in Early Learning and Childcare, Playwork, Education or Social Services, along with:

- Three National 5 qualifications, one to be English
- In S5 or S6 at school on starting the course
- Be capable of working at level 6 (Higher) in S5 and S6

Progression Pathways

On successful completion of this course, you will have the opportunity to be treated as an internal applicant. You could progress on to the following full-time programmes:

- HNC Childhood Practice (SCQF Level 7)
- HNC Additional Support Needs (SCQF Level 7)

The entry point (level you would study) would be dependent on the level and relevance of your other qualifications. This will also be dependent on your attendance and commitment to this course.

Employment Routes

A Modern Apprenticeship Early Years Care and Education, leading to a Scottish Vocational Qualification (SVQ) Levels 2 to 4 in Children's Care, Learning and Development leading to a variety of careers within the Early Years Sector. Can also progress to degree courses, if interested in management positions.



CAMPUS

Langside

ATTENDANCE PATTERN

Tuesday and Thursday
1.30am - 4.00pm

Plus a 3 week block placement in June *May be subject to change

COURSE AWARD

SCQF Level 6
Credit Points 61

UNITS COVERED

Please refer to
www.glasgowkelvin.ac.uk/departments/foundation-apprenticeships/ for unit breakdown and further information

HOURS OF LEARNING

280

CAMPUS

TIGERS Training Academy

ATTENDANCE PATTERN

This qualification can be delivered in school – as a Hub approach – 1 full day, 2 half days (flexibility is available across different days and times to suit school timetables)

COURSE AWARD

SCQF Level 6
Credit Points 61

UNITS COVERED

Please refer to www.tigersltd.co.uk for unit breakdown and further information.

HOURS OF LEARNING

610

Social Services - Children and Young People

Course Outline

Students will work with Tigers Early Years Academy and work towards completion of Social Services Children and Young People SCQF Level 6, regardless of the delivery model, Social Services (Children and Young People) framework includes two core elements –

1. National Progression Award in Social Services (Children and Young People)
2. Work Based Learning units

Students will also gain some knowledge on early brain development and the importance of healthy, secure relationships to support children and young people's development. Learners will learn about the theory of attachment, and begin to understand how we all have different Attachment styles, which fundamentally shape how we respond in different situations – this is the same for children. Students will gain an understanding about the importance of their overall wellbeing and take part in sessions that promote healthy body and healthy mind, with our Health and Wellness Co-Ordinator.

Students will also have the opportunity to undertake some work experience within the sector and put their learning into practice. During this time learners will be visited by Tigers early years assessors within the workplace to confirm learning and knowledge gained during this time. You will be assigned tasks to be completed in line with workplace requirements.

Course Entry Requirements

Interested students must be going into S5/6 and be working at National 5 in English or other subjects at this level. Students will then submit an application form to Tigers and be invited in to meet staff at our Academy.

Progression Pathways

- University
- Modern Apprenticeship
- Graduate Apprenticeship

Employment Routes

Psychology, Nursing/ Health Profession, Law, Early Years, Teaching, Social Work, Counselling, Police Force/Prison Service

Course Outline

On studying this Foundation Apprenticeship, you will learn the fundamental concepts behind the software development and design process, from initial concept to the scoping of functional requirements, design and code, and user testing and refinement.

You will gain a practical insight to key industry sectors such as web development, application development, and software development lifecycle. Your practical skills will be further developed through work-based learning activity with an employer. You will attend up to 18 days of work-based learning with an employer. This will be decided by your school timetable (availability through free periods), the potential employer and college. This can be once a week from January onwards, or a set of consecutive days in June.

Course Entry Requirements

You must:

- Have achieved 2 National 5's (grade A-C) in relevant subject area e.g., Information Technology, Maths, Computing Science.
- Be working towards one or more Highers (grade A-C) in relevant subject areas e.g., Information Technology, Computing Science. You must be completing Higher Maths.
- Ideal students will be in S5/6

Progression Pathways

A Foundation Apprenticeship qualification in Software Development will give you direct progression into the HNC Software Development course at Glasgow Clyde College. It can open up various pathways within the IT sector, including IT technical support, software developer (including apps and games), web developer, database administrator, and information (including cyber) security. The IT sector is vital to the continued growth of the Scottish economy and underpins the growth of most sectors across the country.

Employment Routes

The IT industry covers a wide range of job roles such as:

- IT Technical Support
- Software Developer (including Apps and Games)
- Web Developer
- Database Administrator
- Information (including Cyber) Security



CAMPUS

Langside

ATTENDANCE PATTERN

Tuesday and Thursday
1.30am - 4.00pm

COURSE AWARD

SCQF Level 6
Credit Points 56

UNITS COVERED

- Computing: Applications Development
- Computing: Authoring a Website
- Software Design and Development
- Work Based Challenge
- Health and Safety in IT and Telecom
- Investigating and Defining Customer Requirements for IT and Telecoms Systems
- Data Modelling
- Object Oriented Computer Programming 2

HOURS OF LEARNING

155

CAMPUS
Springburn

ATTENDANCE PATTERN
Tuesday and Wednesday
9.00pm - 4.00pm

COURSE AWARD
SCQF Level 7
Credit Points 84

UNITS COVERED

- Technology, Materials & Testing
- Contract & Project Management
- Specialisms
- Graded Units
- Site Surveying
- Substructure
- Technical Communication
- Structural:
 - Mechanics
 - Geotechnics
 - CAD
 - Highways
 - Mathematics

HOURS OF LEARNING
840

Civil Engineering

Course Outline

This course is intended to provide students with the technical education requirements for the position of Technician Engineer.

The syllabus is broad-based to allow for future employment with Civil Engineering contractors, consulting engineers, local authorities or possible progression with their current employer

Course Entry Requirements

Higher qualification in Maths or Physics - Grade C or above OR
Technological Higher subject (Grade C or above) with National 5 Maths.

Progression Pathways

- Modern Apprenticeship
- Employment
- College
- University

Employment Routes

- Civil Engineering

INDEX

Course	Level	College	Campus	Day/Time	Hours of Learning	SCQF Credit Points	Page No
Admin, Financial and Business Services							
NPA Accounting	5	City of Glasgow College	City Campus	Tuesday and Thursday 1.30pm - 4.00pm	155	24	20
NPA Financial Services	5	City of Glasgow College	City Campus	Tuesday and Thursday 1.30pm - 4.00pm	155	24	21
Supply Chain & Procurement	5	City of Glasgow College	City Campus	Tuesday and Thursday 1.30pm - 4.00pm	155	24	22
Fashion Brand Retailing	6	City of Glasgow College	City Campus	Tuesday and Thursday 1.30pm - 4.00pm	155	18	23
Higher Accounting	6	City of Glasgow College	City Campus	Tuesday and Thursday 1.30pm - 4.00pm	155	24	24
Higher Economics	6	City of Glasgow College	City Campus	Tuesday and Thursday 1.30pm - 4.00pm	155	24	25
NPA Criminology	6	City of Glasgow College	City Campus	Tuesday and Thursday 1.30pm - 4.00pm	155	18	26
NPA Data Science	6	City of Glasgow College	City Campus	Tuesday and Thursday 1.30pm - 4.00pm	155	18	27
NPA Financial Services	6	City of Glasgow College	City Campus	Tuesday and Thursday 1.30pm - 4.00pm	155	30	28
NPA Legal Studies	6	City of Glasgow College	City Campus	Tuesday and Thursday 1.30pm - 4.00pm	155	18	29
PDA Criminology & Law	7	Glasgow Clyde College	Langside Campus	Tuesday and Thursday 1.30pm - 4.00pm	160	18	30
HNC Business	7	City of Glasgow College	City Campus	Tuesday and Thursday 1.30pm - 4.00pm	185	32	31
HNC Financial Services	7	City of Glasgow College	City Campus	Tuesday and Thursday 9.30am - 5.00pm	185	32	32
Creative and Cultural Industries							
School Link ICT Movies and Animation	2/3	Glasgow Clyde College	Annie'sland Campus	Tuesday 1.00pm - 3.30pm	90	6	37
Creative Arts	2/3	Glasgow Clyde College	Cardonald Campus	Thursday 9.30am - 12.00pm	99	6	38
Creative Comics	3	Glasgow Clyde College	Langside Campus	Wednesday 9.30am - 12pm	99	6	39

Course	Level	College	Campus	Day/Time	Hours of Learning	SCQF Credit Points	Page No
Current trends in Hairdressing	4	Glasgow Kelvin College	East End Campus	Tuesday and Thursday 1.30pm - 4.00pm	150	4	42
Current Trends in Facial Make up	4	Glasgow Kelvin College	Easterhouse Campus	Tuesday and Thursday 1.30pm - 4.00pm	160	5	40
NPA Computer Refurbishment	4	Glasgow Clyde College	Anniesland Campus	Tuesday and Thursday 1.30pm - 4.00pm	160	12	43
NPA Cosmetology	4	Glasgow Clyde College	Cardonald Campus	Tuesday and Thursday 1.30pm - 4.00pm	155	24	44
NPA Creative Beauty Skills with Complementary Therapies	4	Glasgow Clyde College	Langside Campus	Tuesday and Thursday 1.30pm - 4.00pm	160	24	45
Introduction to Hairdressing, Beauty & Make-up Artistry	4	City of Glasgow College	City Campus	Tuesday and Thursday 1.30pm - 4.00pm	155	24	47
Design & Manufacture	5	City of Glasgow College	City Campus	Tuesday and Thursday 1.30pm - 4.00pm	155	24	48
Esports	5	Glasgow Clyde College	Cardonald Campus	Tuesday and Thursday 1.30pm - 4.00pm	155	18	49
Introduction to Jewellery Arts & Technology	5	City of Glasgow College	City Campus	Tuesday and Thursday 1.30pm - 4.00pm	155	36	50
NPA Radio & Podcasting	5	City of Glasgow College	City Campus	Tuesday and Thursday 1.30pm - 4.00pm	155	24	53
NPA Television Production	5	City of Glasgow College	City Campus	Tuesday and Thursday 1.30pm - 4.00pm	155	24	54
Computer Games Development	6	City of Glasgow College	City Campus	Tuesday and Thursday 1.30pm - 4.00pm	155	18	57
Cyber Security	6	Glasgow Clyde College	Langside Campus	Tuesday and Thursday 1.30pm - 4.00pm	155	18	58
Esports	6	City of Glasgow College	City Campus	Tuesday and Thursday 1.30pm - 4.00pm	155	18	59
Graphic Design	6	City of Glasgow College	City Campus	Tuesday and Thursday 1.30pm - 4.00pm	155	18	60
Media & Content Production	6	Glasgow Clyde College	Cardonald Campus	Tuesday and Thursday 1.30pm - 4.00pm	155	30	62

Course	Level	College	Campus	Day/Time	Hours of Learning	SCQF Credit Points	Page No
Musical Theatre	6	Glasgow Kelvin College	Easterhouse Campus	Tuesday and Thursday 1.30pm - 4.00pm	150	24	63
NPA Computer Games Development	6	Glasgow Clyde College	Annie'sland Campus	Tuesday and Thursday 1.30pm - 4.00pm	155	18	64
NPA Cyber Security	6	City of Glasgow College	City Campus	Tuesday and Thursday 1.30pm - 4.00pm	155	18	65
NPA Professional Theatre Preparation	6	Glasgow Clyde College	Langside Campus	Tuesday and Thursday 1.30pm - 4.00pm	155	18	67
Set Design, Prop & Model Making for Film & TV	6	City of Glasgow College	City Campus	Tuesday and Thursday 1.30pm - 4.00pm	155	4	68
Acting & Performance	7	Glasgow Kelvin College	Easterhouse Campus	Tuesday & Wednesday 9.am - 4pm	270	24	69
Food, Drink, Tourism and Leisure Industries							
Schools Link Baking	2	Glasgow Clyde College	Cardonald Campus	Wednesday 1.00pm - 3.30pm	90	9	72
Schools Link Working in the Café	2/3	Glasgow Clyde College	Cardonald Campus	Tuesday 9.30am - 12.00pm	90	9	75
NPA Professional Cookery	3	City of Glasgow College	City Campus	Monday 9.30am - 2.30pm	155	24	76
NPA Professional Cookery	3	Enterprise Academy	Parkhill School	Tuesday 8.55am - 10.45am & Thursday 9.15am - 10.45am	160	24	77
Outdoor & Coach for Tomorrow	3	Glasgow Kelvin College	Easterhouse Campus	Tuesday 9.30am - 3.30pm	120	6	78
Introduction to Food Service Skills	3/4	City of Glasgow College	City Campus	Tuesday 9.30am - 2.45pm	155	5	79
NPA in Bakery	4	City of Glasgow College	City Campus	Tuesday and Thursday 1.30pm - 4.00pm	155	24	81
Games & Sport	4	Glasgow Kelvin College	Springburn Campus	Tuesday and Thursday 1.30pm - 4.00pm	160	TBC	82
Hotel Schools Scotland	4	Parkhill Secondary	Enterprise Academy	Monday 9.15am - 3pm & Tuesday 9.30am - 12pm & Wednesday 1pm - 3pm	360	24	83
NPA Professional Cookery	4	City of Glasgow College	City Campus	Tuesday and Thursday 1.30pm - 4.00pm	155	24	84

Course	Level	College	Campus	Day/Time	Hours of Learning	SCQF Credit Points	Page No
Award in Barista Skills	5	Enterprise Academy	Parkhill School	Thursday 9.15am - 10.45am	50	6	85
Up in the Air and on the Ground	5	City of Glasgow College	City Campus	Tuesday and Thursday 1.30pm - 4.00pm	155	24	89
Intro to Adventure Sport & Fitness	6	Glasgow Kelvin College	Springburn Campus	Tuesday and Thursday 1.30pm - 4.00pm	160	5	90
NPA International Events and Enterprise	6	City of Glasgow College	City Campus	Tuesday and Thursday 1.30pm - 4.00pm	155	24	93
Health, Care and Education							
SFW Early Learning and Childcare	4	Glasgow Clyde College	Langside Campus	Tuesday and Thursday 1.30pm - 4pm	155	24	96
Uniformed and Emergency Services	4	City of Glasgow College	City Campus	Tuesday and Thursday 1.30pm - 4pm	155	24	98
Introduction to Midwifery & Childrens Nursing	4/5	Glasgow Clyde College	Cardonald Campus	Tuesday and Thursday 1.30pm - 4pm	155	24	100
Child, Health & Social Care	5	City of Glasgow College	City Campus	Tuesday and Thursday 1.30pm - 4pm	155	30	101
Mental Health & Criminology	5	Glasgow Kelvin College	Springburn Campus	Tuesday and Thursday 1.30pm - 4pm	160	18	104
Nat 5 Psychology	5	Glasgow Kelvin College	Springburn Campus	Tuesday and Thursday 1.30pm - 4pm	160	24	105
SFW Early Learning and Childcare	5	Glasgow Clyde College	Anniesland Campus	Tuesday and Thursday 1.30pm - 4pm	155	24	106
SFW Early Learning and Childcare	5	Glasgow Kelvin College	East End Campus	Tuesday and Thursday 1.30pm - 4pm	160	18	107
Higher Italian	6	City of Glasgow College	City Campus	Tuesday and Thursday 1.30pm - 4pm	155	24	108
Higher Psychology	6	Glasgow Clyde College	Anniesland Campus	Tuesday and Thursday 1.30pm - 4pm	155	24	110
Higher Spanish	6	City of Glasgow College	City Campus	Tuesday and Thursday 1.30pm - 4pm	155	24	112
Introduction to Nursing	6	Glasgow Clyde College	Anniesland Campus	Tuesday and Thursday 1.30pm - 4pm	155	30	113

Course	Level	College	Campus	Day/Time	Hours of Learning	SCQF Credit Points	Page No
Mental Health & Wellbeing	6	City of Glasgow College	City Campus	Tuesday and Thursday 1.30pm - 4pm	155	24	114
NPA Children & Young People	6	Glasgow Clyde College	Langside Campus	Tuesday and Thursday 1.30pm - 4pm	155	24	115
NPA Social Services, Children & Young People	6	City of Glasgow College	City Campus	Tuesday and Thursday 1.30pm - 4pm	155	24	116
Youth Work	6	City of Glasgow College	City Campus	Tuesday and Thursday 1.30pm - 4pm	155	12	118
PDA Psychology	7	Glasgow Clyde College	Langside Campus	Tuesday and Thursday 1.30pm - 4pm	160	24	119
Land Based Industries							
Introduction to Horticulture	3/4	Parkhill Secondary	Enterprise Academy	Tuesday and Thursdays 8.55am - 10.45am	100	12-18	123
SVQ Horticulture	3/4	Parkhill Secondary	Enterprise Academy	Tuesday and Thursdays 1.50pm - 3.25pm	100	15	125
Transition and Supported Learning							
Drama & Art Schools Link	1	Glasgow Kelvin College	East End Campus	Wednesday 10am - 3pm	120	3	128
Drama & Cookery Schools Link	1	Glasgow Kelvin College	East End Campus	Wednesday 10.00am - 3.00pm	120	3	129
Photography & Art	2	Glasgow Kelvin College	East End Campus	Monday 10.00am - 3.00pm	120	3	130
Schools Link Travel Skills	2	Glasgow Clyde College	Langside Campus	Tuesday 9.30am - 2.45pm	162	9	131
Coding for Beginners	2/3	Glasgow Clyde College	Annie'sland Campus	Thursday 9.30am - 12.00pm	90	6	132
Schools Link Towards my Future	2/3	Glasgow Clyde College	Langside Campus	Thursday 1pm - 3.30pm	99	9	135
Expressive Arts	3	Glasgow Clyde College	Annie'sland Campus	Monday 1.00pm - 3.30pm	90	6	136
Personal & Social Development	3	City of Glasgow College	City Campus	Friday 9.30am - 12.00pm	150	18	138
Transitions	3	City of Glasgow College	City Campus	Tuesday 9.30am - 12.00pm	150	18	139

Course	Level	College	Campus	Day/Time	Hours of Learning	SCQF Credit Points	Page No
Sound Engineering & Photography	3/4	Glasgow Kelvin College	Easterhouse Campus	Wednesday 9.30am - 3.30pm	120	6	140
ESOL - Intermediate	4/5	Glasgow Clyde College	Anniesland and Cardonald Campus	Tuesday & Thursday 1.30pm - 4.00pm	155	24	143
Introduction to Hotel & Café Skills	4/5	Enterprise Academy	Parkhill Secondary	Tuesday 9.15am - 10.45am	80	16	144
Energy, Engineering, Construction and Manufacturing							
Creative Wood Working	3	Glasgow Clyde College	Anniesland Campus	Thursday 1.00pm - 3.30pm	80	6	148
Painting & Decorating	3	Glasgow Clyde College	Anniesland Campus	Friday 9.30am - 12pm	90	9	149
RSBI Year 1 Furniture Assembly	3/4	RSBI	Blindcraft Industries	This programme consist of one class every day per week 9.00am - 12.00pm	108	6	150
Automotive Skills	4	Glasgow Clyde College	Anniesland Campus	Tuesday and Thursday 1.30pm - 4.00pm	155	30	152
Construction	4	Glasgow Kelvin College	East End Campus	Tuesday and Thursday 1.30pm - 4.00pm	150	24	154
NPA Building Services Engineering	4	Glasgow Kelvin College	Springburn Campus	Tuesday and Thursday 1.30pm - 4.00pm	160	24	155
BAE Systems Customised Engineerign Award	5	Glasgow Clyde College	Anniesland Campus	TBC	160	48	156
Mechanical Engineering BAE Pre-Apprenticeship Programme	5	City of Glasgow College	City Campus	Tuesday and Thursday 9.00am - 4.00pm	366	48	157
Performing Engineering Options	5	Glasgow Kelvin College	Springburn Campus	Tuesday and Thursday 1.30pm - 4.00pm	160	40	158
Practical Electronics	5	Glasgow Clyde College	Cardonald Campus	Tuesday and Thursday 1.30pm - 4.00pm	155	24	159
Introduction to Building Design & Civil Engineering	5	City of Glasgow College	City Campus	Tuesday and Thursday 1.30pm - 4.00pm	155	18	160
Building Services Engineering	6	Glasgow Kelvin College	Springburn Campus	Tuesday & Wednesday 9.00am-4pm	320	12	161

Course	Level	College	Campus	Day/Time	Hours of Learning	SCQF Credit Points	Page No
NPA Building Services Engineering	7	Glasgow Kelvin College	Springburn Campus	Monday & Tuesday 9.00am-4pm	270	12	163
HNC Electronic Engineering	7	Glasgow Kelvin College	Springburn Campus	Monday and Tuesday 9.00am - 4.00pm	160	TBC	164
HNC Mechanical Engineering	7	Glasgow Kelvin College	Springburn Campus	Monday & Tuesday - 9.00am - 4.00pm	432	96	165
Foundation Apprenticeships							
Automotive	4	Glasgow Kelvin College	Springburn Campus	Tuesday and Thursday 1.30pm - 4.00pm	160	24	168
Construction	4	City of Glasgow College	City Campus	Tuesday and Thursday 1.30pm - 4.00pm / Winter Leaver Monday or Wednesday 9.30am - 4pm	270	27	170
Construction	4	Glasgow Clyde College	Cardonald Campus	Tuesday and Thursday 1.30pm - 4pm	160	24	172
Young Women into Construction	4	City of Glasgow College	City Campus	Friday 12.30pm - 4pm	270	27	173
Tigers - Construction Crafts	4/5	Tigers Training	Tigers Training Academy	Days & times to suit	510	51	175
Hospitality	5	City of Glasgow College	City Campus	Tuesday and Thursday 1.30pm - 4pm	300	30	176
Business Skills	6	City of Glasgow College	City Campus	Year 1 - Tuesday and Thursday 1.30pm - 4.00pm SDDM (Fast Track) Tuesday and Thursday 9.30am - 4pm	440	54	177
Tigers - Business Skills	6	Tigers Training	Tigers Training Academy	Flexible Delivery pattern	510	51	178
Financial Services	6	City of Glasgow College	City Campus	SDDM (Fast Track) Tuesday and Thursday 9.30am - 4pm	500	52	179
Social Services: Children & Young People	6	City of Glasgow College	City Campus	Fast Track Tuesday and Thursday 9.30am - 4pm	160	61	180

Course	Level	College	Campus	Day/Time	Hours of Learning	SCQF Credit Points	Page No
Social Services Children & Young People	6	Glasgow Clyde College	Langside Campus	Tuesday and Thursday 1.30pm - 4pm Plus a 3 week block placement in June	280	61	181
Tigers - Social Services Children & Young People	6	Tigers Training	Tigers Training Academy	Flexible Delivery pattern	610	61	182
Software Development	6	Glasgow Clyde College	Langside Campus	Tuesday and Thursday 1.30pm - 4pm	155	56	183
Civil Engineering	6	Glasgow Kelvin College	Springburn Campus	Tuesday and Wednesday 9am - 4pm	840	84	184



All three Glasgow colleges work in partnership with Glasgow City Council and Glasgow schools to offer students a senior phase programme that will develop the technical and employment skills demanded by the world of work.

It's a unique and rewarding opportunity for Glasgow's young people to experience a college environment whilst still at school and to help them to define the learning and career path they would like to take.

State-of-the-art facilities and the latest learning and guidance techniques promise to make this an unforgettable experience for everyone who participates.



Derek Smeall
Principal and Chief Executive
Glasgow Kelvin College



Disclaimer:

Glasgow City Council will endeavour to deliver courses in accordance with the descriptions set out in this booklet. Glasgow City Council reserves the right to make variations to the contents or methods of delivery of courses, to discontinue courses and to merge or combine course if such action is reasonably considered to be necessary by Education Services. The information given in this booklet is believed correct at the time of publication. Education Services reserves the right at its discretion at any time and for any reason to make changes to the services offered set out in this booklet without prior notice including, but not limited to the following:

- To withdraw the offer of a course which fails to recruit the minimum number of required by regulation
- To make changes to syllabuses and courses for reasons including meeting technological or academic developments or employers requirements particularly in specialist options