

Biodiversity Homework Week 1



This Homework requires **GRAPH PAPER!**



In your jotter write the **DATE** in the margin.

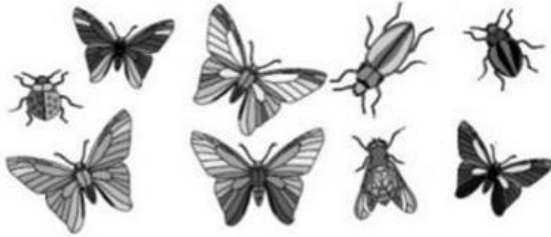
Now add a **TITLE** for your homework.

Your title should be the name of the Homework: Biodiversity Homework Week 1

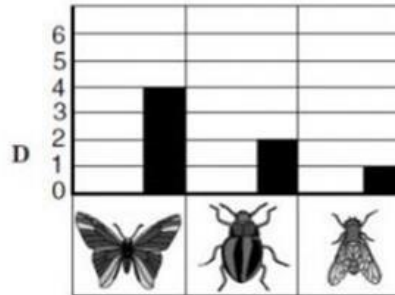
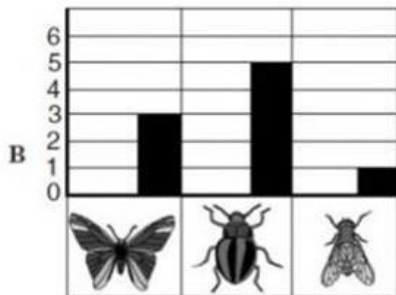
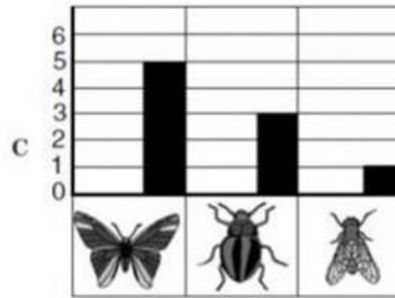
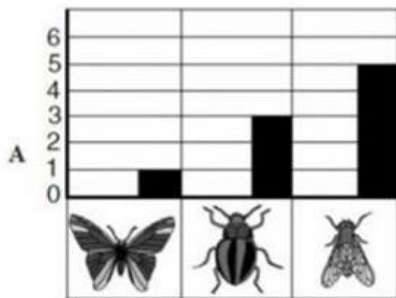
Write today's date in the margin

Write the title of this page in your jotter as a heading.

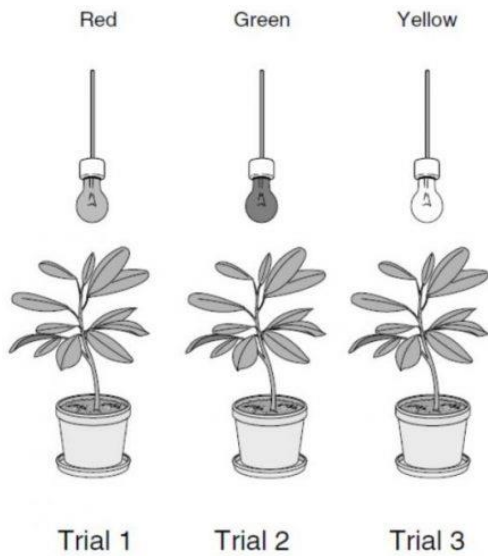
Question 1.



The picture shows some insects Dana saw while she was out walking. Which graph best represents what Dana saw?



Question 2.



A student set up the experiment shown opposite. What was the student most likely investigating?

- A If light intensity effects the growth of plants
- B If the colour of light effects the growth of plants
- C If plants need light to grow
- D If different types of plant grow differently in light of different colours

Question 3.

The table below shows the number of new plants growing on five spider plants and five Mother of Thousands plants.

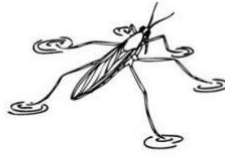
Type of plant	Number of new plants				
	Plant 1	Plant 2	Plant 3	Plant 4	Plant 5
Mother of Thousands plant	12	19	15	8	36
Spider plant	2	8	5	3	2

Which of the following shows the average number of new plants on each type of plant?

	Average number of new plants	
	Mother of Thousands plant	Spider plant
A	4	18
B	18	4
C	20	90
D	90	20

Question 4.

A pond skater is a small insect found on the surface of ponds.



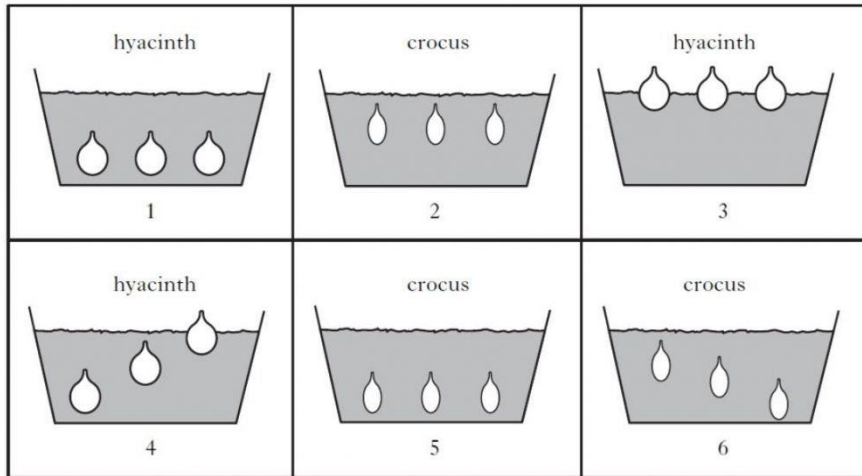
A scientist counted the number of pond skaters on the surface of a pond every month for a year. Their results are shown in the table below.

MONTH	NUMBERS PER ML
January	5
February	7
March	14
April	25
May	30
June	35
July	45
August	45
September	40
October	20
November	10
December	6

- a) Use the information to draw a line graph.
- b) What happens to the numbers of pond skaters from January to July?
- c) During which two months is the number of pond skaters at their lowest?
- d) Suggest a reason for the low numbers in these two months.

Question 5.

The following pots were set up to investigate the growth of hyacinth and crocus bulbs.



Which two pots should be compared to investigate the effect of **depth of planting** on the growth of crocus bulbs?

- A 1 and 3
- B 2 and 5
- C 3 and 5
- D 4 and 6



A marking guide for this Homework is available (password required).