

# Body Systems Homework Week 6



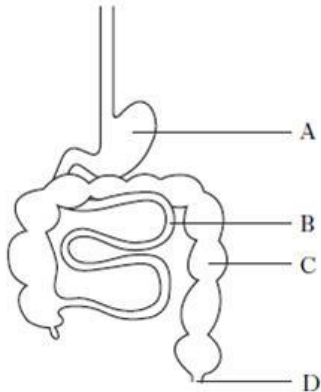
In your jotter write the DATE in the margin.

Now add a TITLE for your homework.

Your title should be the name of the Homework: Body Systems Homework Week 6

The diagram below shows the human alimentary canal.

Use the diagram to answer Questions 1 and 2.



### Question 1.

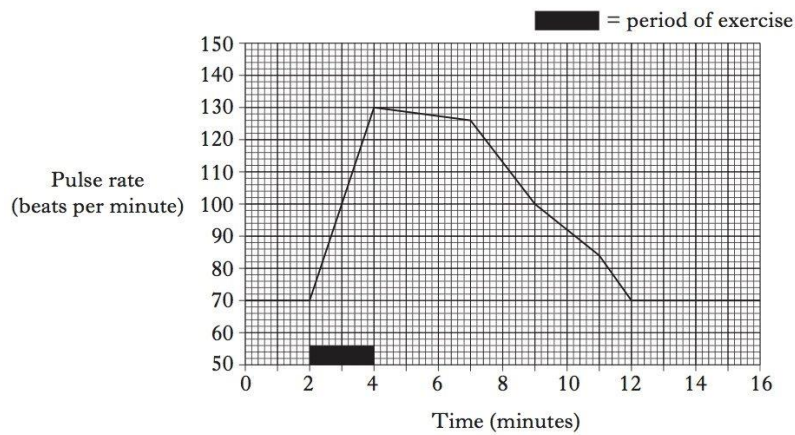
In which structure is water absorbed from?

### Question 2.

What structure is the small intestine?

### Question 3.

The pulse rate of a student was recorded before, during and after two minutes of exercise. The results are shown in the graph below.



What was the time taken for his pulse rate to return to normal after the exercise had stopped?

- A 8 minutes
- B 10 minutes
- C 12 minutes
- D 16 minutes

**Question 4.**

The dental formula of an animal describes the number of each type of tooth on the upper and lower jaw of one side of its mouth. The diagram explains the dental formula for an adult human.

$$\text{Dental formula} = \text{incisors (I)} \frac{2}{2}, \text{ canine (C)} \frac{1}{1}, \text{ premolars (P)} \frac{2}{2}, \text{ molars (M)} \frac{3}{3} = 16$$

$$\text{Total number of teeth} = 16 \times 2 = 32$$

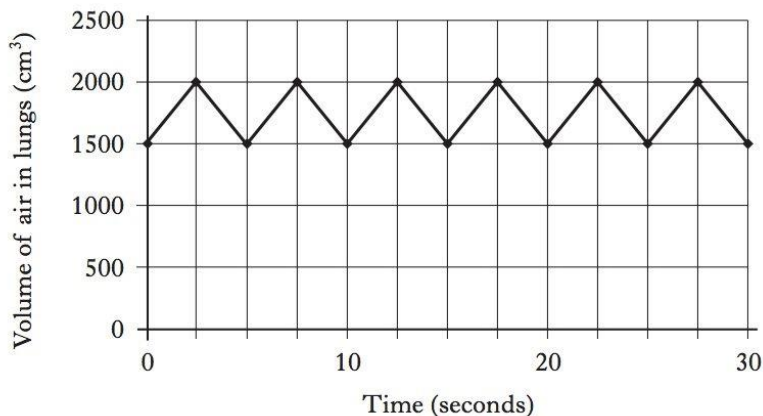
The table below gives the dental formulae for some animals.

<i>Animal</i>	<i>Dental formula</i>	<i>Total number of teeth</i>
Dog	I $\frac{3}{3}$ C $\frac{1}{1}$ P $\frac{4}{4}$ M $\frac{2}{3}$	42
Sheep	I $\frac{0}{3}$ C $\frac{0}{1}$ P $\frac{3}{3}$ M $\frac{3}{3}$	32
Rabbit	I $\frac{2}{1}$ C $\frac{0}{0}$ P $\frac{3}{2}$ M $\frac{3}{3}$	

- Complete the table to show the total number of teeth for a rabbit.
- Which animal in the table has only 2 canine teeth?
- For what purpose will a sheep use its molar teeth?

**Question 5.**

The graph below shows the volume of air in a student's lungs during a thirty second period of time.



The student's breathing rate, in breaths per minute, was

- 6
- 12
- 500
- 3000



A marking guide for this Homework is available (password required).