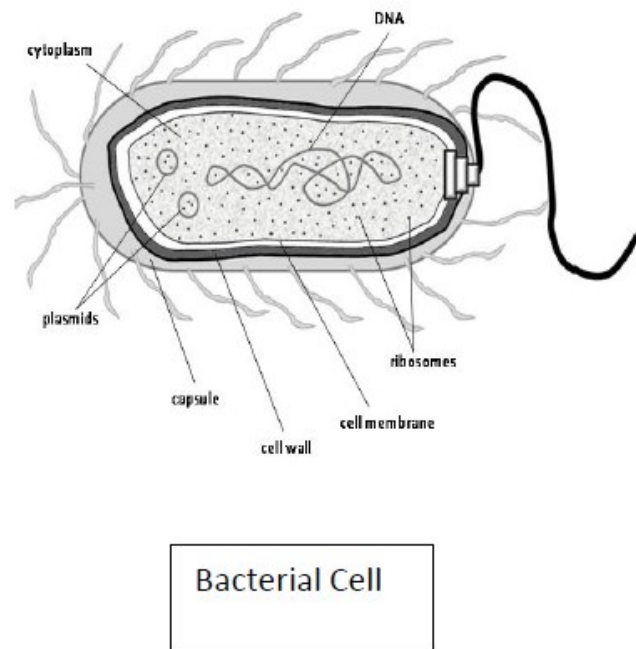
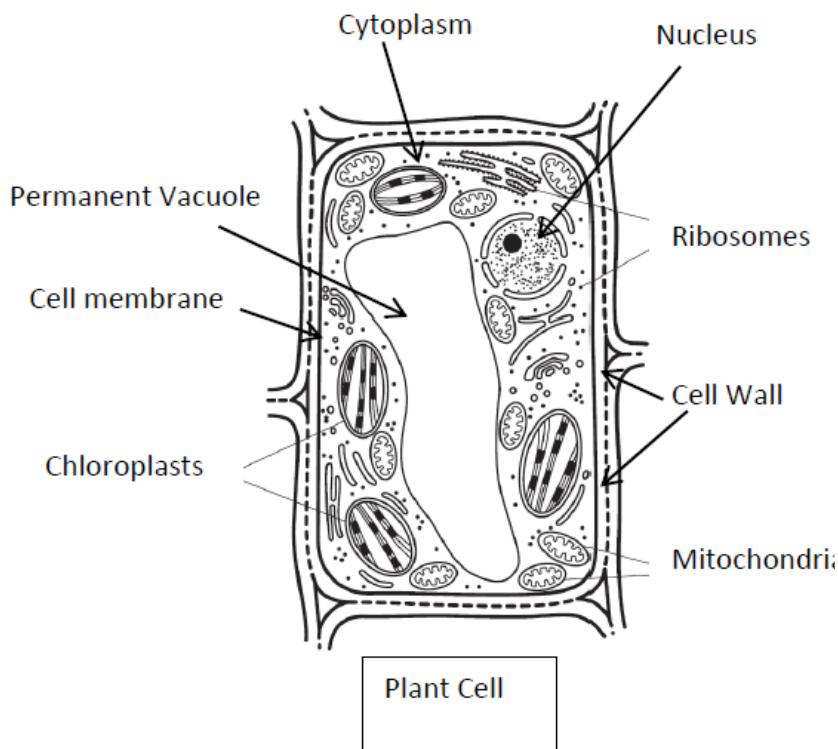
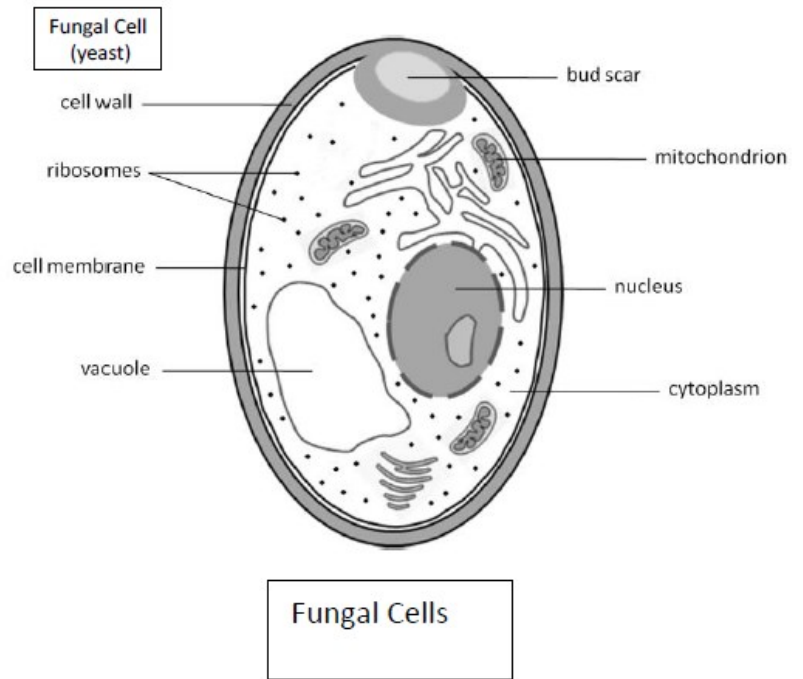
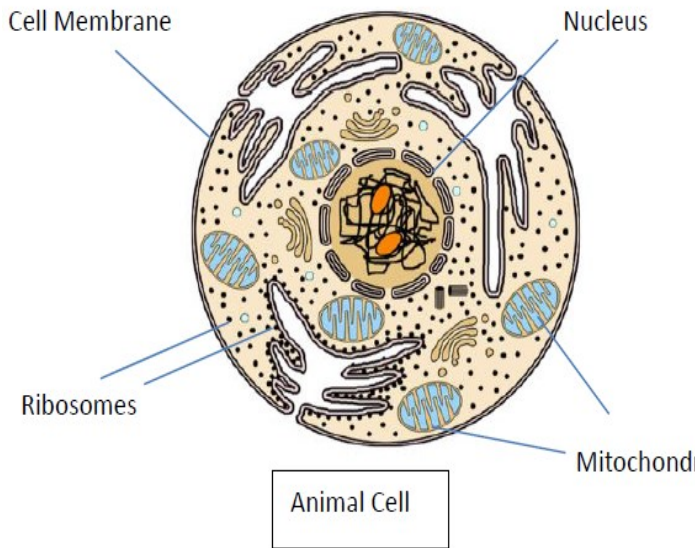


Unit 1 Key Area 1 Cell Structure

The 4 main types of Cells are:



Structure	Function	Cells Found in:
Cytoplasm	Site of cell reactions	Animal, Plant, Fungal, Bacterial
Cell Membrane	Controls entry and exit of molecules	Animal, Plant, Fungal, Bacterial
Nucleus	Contains genetic information/ DNA. Controls cell activities.	Animal, Plant, Fungal
Ribosomes	Sites of protein synthesis	Animal, Plant, Fungal, Bacterial
Mitochondria	Sites of aerobic respiration	Animal, Plant, Fungal
Cell Wall	Gives the cell support and structure	Plant, Fungal, Bacterial
Vacuole	Contains cell sap	Plant
Chloroplasts	Contain chlorophyll. Traps light for photosynthesis.	Plant
Plasmid	Additional rings of DNA	Bacterial

Plant, Fungal and Bacterial cells have a CELL WALL. Animal cells do not have a cell wall.

Plant cell walls are made of **CELLULOSE** whereas the cell wall of bacterial and fungal cells is made of a different material.

Bacterial Cells **DO NOT HAVE A NUCLEUS.**

Bacterial cells are the only cells which contain a **PLASMID.**

Bacterial cells **DO NOT HAVE MITOCHONDRIA.**

Fungal cells and plant cells differ because Fungal cells **DO NOT CONTAIN CHLOROPLASTS.**