



Hillhead High School

P7 Information Evening

6-7pm Tue 28th November

Outline of the Evening

- Welcome and Visit Summary
- Opening Musical Performance
- Our school: Student Experience
- Our school: Parent Council
- Our School: Values and Habits
- Our School: Curriculum Model
- Our School: Pupil Support
- Closing Comments and Next Steps



KINDNESS



AMBITION



INTEGRITY



RESILIENCE



RESPECT



Our School Captains Share their Experience...



The Role of the Parent Council

Hillhead High School has an active Parent Council that works and engages with the school on various initiatives:

- Fundraising
- Events
- Raising awareness programmes – gambling harm, menopause etc

Parent Council holds parent forum 5 times a year

- This event is open to all parents
- School leadership attends it as well
- Meetings on Zoom and in person



Join Hillhead High
School Parent Forum



Our School: Values and Habits

Learning
Time

Learning
Quality

Part of the
Team



KINDNESS



AMBITION



INTEGRITY



RESILIENCE



RESPECT

Our School: BGE Curricular Model

- Pupils in S1-S3 are at a stage in their education known as the BGE: Broad General Education.
- Pupils study a wide range of subjects across S1-2, and make some subject choices at the end of S2 which allows them to follow a more specialised curriculum in S3.



Our Faculties

English

Mathematics

Modern Languages

Science

Physical Education, Health and Wellbeing

Technologies

Expressive Arts

Humanities



Our Curricular Leaders...

S1: John Muir Award and STEM Project

The Trust's John Muir Award is an environmental award scheme focused on wild places. It is inclusive, accessible and non-competitive, though should challenge each participant. The Award encourages awareness and responsibility for the natural environment through a structured yet adaptable scheme, in a spirit of fun, adventure and exploration.

S1 John Muir Award



Mrs Wang 王老师 @MrsWangHHS · Oct 27
Outdoor learning. Hard working for the community
[@HillheadHS](#) [#Johnmuir](#)



💬 1 ❤️ 8 📊 822 📌 ⬆



Ms Willams @willams_ms · Sep 29
Great to be out in Kelvingrove park this afternoon with our S1 pupils and [@RSPBGlasgow](#) embarking on the **John Muir** Award. We discovered many mini beasts 🐛. Well done everyone! [@JohnMuirTrust](#) [@HillheadHS](#)



👍 📌 ⬆

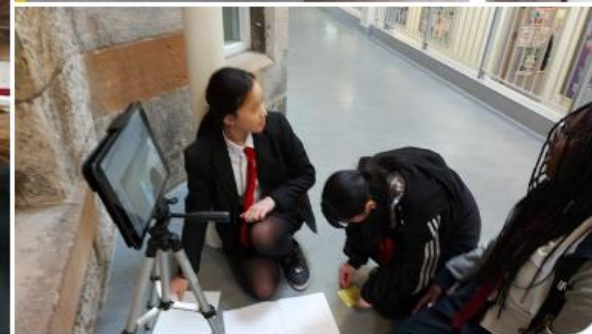
S1 STEM Project 2023: Forensic Science



Ms Olsen @MsOlsenComp · Oct 6



More Friday 5 Forensics [#creativity](#) with Ash from School of Innovation and Technology at GSA. [@HHSTechnologies](#) [@HillheadHS](#) [@GlasgowRTC](#) [@GSofA](#)



1



2



8



666



"Friday 5": Just a few of our curricular offerings....

Couch to 5k with Miss Campbell (Pastoral Care)

Couch to 5K is a training programme which will help you gradually work up towards running 5km (just over 3 miles).

Each session involves starts with a mix of running and walking to gradually build up your fitness and stamina, and each week you slowly build up running time, and take less walking breaks.

We will be out running every week in all weather – rain or shine! You will need: PE kit, trainers, and ideally also a light jacket. We will train in the local community, including in Kelvingrove Park.

After the club has graduated from the couch to 5k programme, we will continue building our running skills by running slow, sociable 5ks.



Hand Embroidery Miss Douglas

Work on your mindfulness and patience by learning to sew your own designs! Beginners can learn the basics of a brand new skill whilst more experienced sewers are welcome to bring along their own projects or work on their own creations. There will also be a chance to design and sew Christmas decorations in winter! All materials will be provided.



Join Miss Copland here...

M204

...to borrow these...



...while we follow this...



...to create these...



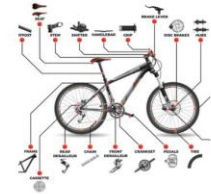
Note: Choose 'Oil Pastel Creations'. Your overall wellbeing and art abilities may improve. No phone zone. A quiet place. Words of encouragement, praise and admiration allowed!



Bicycle Maintenance Club



- Want to maintain your bike or learn bicycle maintenance skills?
- We will provide space and some tools for you to clean, oil and make repairs to your bike.
- Join us on a Friday to learn new skills and teach others what you know about keeping your bike in good order.



Mr Johnson

Kindness Club

- Would you like to be involved in promoting kindness in the school and local community?
- Join the Kindness Club and be involved in weekly random acts of Kindness with Miss Cuthbertson
- The club will work towards gaining a Kindness Award



FILM MAKING

With Mr O'Rorke

Jump into the world of film making, looking into the fastest growing industry in Scotland.

Looking at the film making process from idea to screen we will create our own small production companies to create their own film ideas to be aired at Hillhead High's own film festival.

There may be prizes! (Shhhh!)



Our School: Senior Phase Curricular Model

- Our Senior Phase (S4-S6) has been designed to maximise attainment and achievement for all our pupils
- Pupils choose 6 subjects which they study across S4 and S5
- Pupils follow a two-year pathway in S4 and S5, bypassing formal exams at the end of S5 in order to allow more time for learning and teaching and a greater depth to learning
- Pupils also have the opportunity pick up qualifications across S4, for example Well-being Award, RMPS Level 5, Personal Finance Award in PSE
- Ambitious, creating the environment to succeed, skills for life, learning & work



Our Pupil Support and
Pastoral Leaders...



Support for Learning, EAL and Nurture

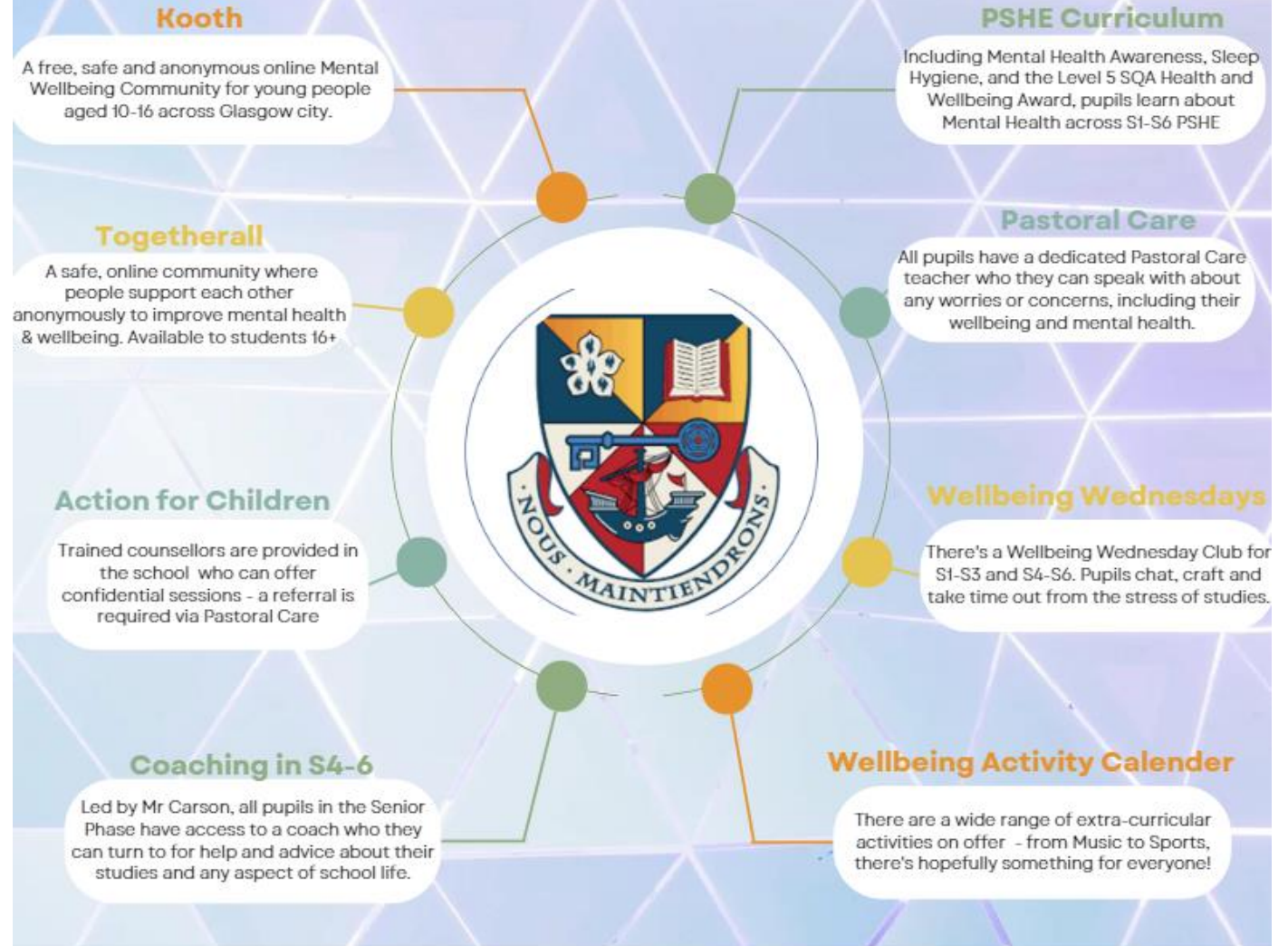
- We provide support for our young people to enable them to reach their full potential
- We provide targeted support to overcome barriers to learning
- We celebrate the richness and diversity of languages within the school
- We provide support to young people who do not use English as their first language at home
- We focus on wellbeing and relationships to support the growth and development of our young people
- We are developing a whole school nurturing approach to learning

The Role of the Pastoral Care Teacher

- P7/S1 Transitions
- Pupil wellbeing
- Teaching PSHE and our subjects
- Subject choices
- Attendance and time-keeping
- S5/6 – college and university applications
- Working with parents and families
- Working with other agencies

Supporting Mental Health and Wellbeing

Supporting Mental Health and Wellbeing



Cost of the School Day

Financial Inclusion Support Officer

If you are on a low Income and have children at school you may be entitled to financial support.
For FREE ADVICE and additional information regarding your financial situation
it may be worth speaking to the Financial Inclusion Support Officer.

FISO: Nicola McCaskill
Tel: 0141 648 2022

Email: schools@money mattersweb.co.uk



EDUCATION MAINTENANCE
ALLOWANCE



FREE SCHOOL
MEALS



SCHOOL CLOTHING
GRANT

Closing Comments and Next Steps

- Thank you for attending this evening!
- Today's visit and tonight's information evening is designed to give primary school students a flavour of high school education.
- Moving forward, we will work closely with our four partner primaries to plan more visits, culminating in a three-day visit in May 2024.