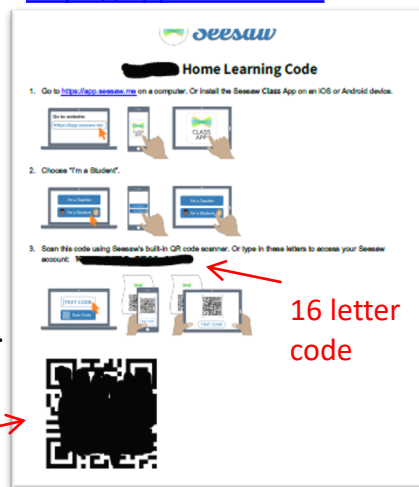


# Seesaw



1. Your child's home learning will be posted weekly. During school closures, learning activities will be posted daily.
2. Your child will use the **SEESAW CLASS** app (this is separate to the Seesaw Family app you use to follow their learning). It is available from the app store.  
Or, you can access Seesaw via the web at <https://app.seesaw.me>


3. Select 'I'm a student'.
4. Log in by *scanning the QR code* with your device or typing in the 16 letter code on your child's Home Learning information sheet (should be stuck in their home learning jotter – if you need another, please contact school).
5. Tap the 'Activities' tab to find your home learning.



# Maths: Sumdog

1. Go to the Sumdog website: [www.sumdog.com](http://www.sumdog.com)
2. Click on **login**
3. Enter the username and password from your child's home learning jotter, along with the school code **gbps**
4. When you first log in, you will be set a 'warm up' for Sumdog to learn your maths level.
5. Your child's teacher can set challenges for them, or they can practise different skills through games.





Engaging evidence-based learning

**Log in**

Username or email

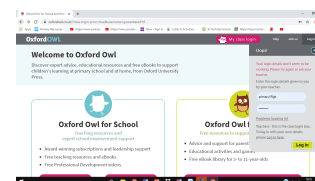
Password

School code

# Reading: Oxford Owl

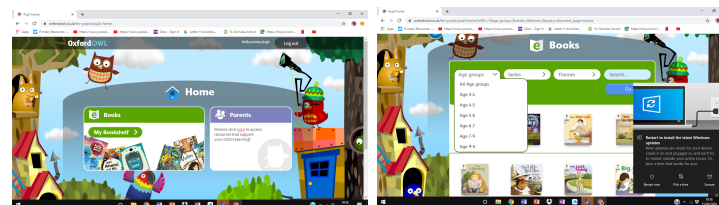
Oxford Owl is a site where we can access electronic reading books for children, for free. It is a great resource for learning at home and practising reading skills.

1. Go to the Oxford Owl website:



[www.oxfordowl.co.uk](http://www.oxfordowl.co.uk)

2. Click on **class login** and use the username and password for your child's class below.



3. Click on 'My Bookshelf'

4. Search for the title of the book you need in the search bar, or browse using the drop-down menus.

Class	Username	Password
P1 – 3	P123Gowanbank	P123Gowanbank
P4 – 5	P45Gowanbank	P45Gowanbank
P6 – 7	P67Gowanbank	P67Gowanbank
LCR	GowanbankLCR	GowanbankLCR