



Newsletter

August 2021



Message from Head Teacher

Dear families,

It is my pleasure to be issuing the first newsletter of the new school year, and welcoming everyone back to Golfhill. A special *hello* is extended to our new P1 pupils, who have been settling in well. We also have new pupils in classes across different year groups. Thank you to all our families for choosing, and continuing to support, our school.

As you know, the Scottish Government has advised that most COVID-related procedures and safety measures should continue into this school year. These were recapped in the document I published before we returned, which can still be viewed on our website:

<https://blogs.glowscotland.org.uk/gc/golfhill/return-to-school-august-2021/>

These will be reviewed in a few weeks, and we will adapt and change as necessary. All local and national advice is followed so that everyone is kept as safe as possible.

I hope you find the information contained in this newsletter useful. If you have any concerns or questions, or if there's anything I can help with, please do not hesitate to contact me.



Yours,

A handwritten signature in blue ink that reads 'Iain Morrow'.

Iain Morrow
Head Teacher

Staffing updates

We were delighted to welcome two new members of teaching staff to Golfhill when we returned after summer...

- Miss Taylor will be teaching P5 this year, along with Ms Buchanan
- Mr Wu will be teaching P7, along with Mr Hay

Miss Casey has joined us as our new Support for Learning Worker, and will be spending time in classes across the school.

I know you'll join me in wishing our new members of staff a very warm welcome.

Our values:

Respect

Safe

Equality

Family survey

In the June 2021 newsletter, we gave a brief overview of the results from the Family Survey which we carried out before summer.

It highlighted lots of positives, such as:

- Our nurturing, diverse and inclusive environment
- How we supported pupils back to school after the lockdowns
- Our outdoor learning provision
- The caring, supportive, welcoming and approachable staff team
- Overall community spirit



"small school with a big heart"

The survey also gave us some ideas for improvement. These can be summarised as follows...

You said... 4 out of 5 for communication

Our response... We will continue to reach out to our families in different ways, including phone calls, texts, emails, *Groupcall*, newsletters, notes home etc.



This year we are re-introducing class newsletters, which will be issued each term to let you know what classes are learning about. Look out for the first one coming soon.

It is unlikely we will be able to have a face-to-face Parents' Evening this term. However, consultations will be carried out via telephone. More information will come out next month.

You said... We (97% of respondents) agree with your spending plans

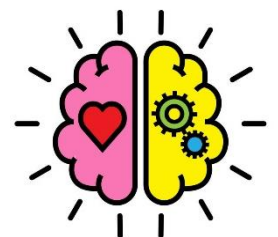
Our response... We have secured extra teaching staff and been able to maintain existing Support for Learning Worker provision.

This allows for:

- Smaller classes, which are proven to help raise attainment
- The Senior Leadership Team being freed up to focus on improvement priorities
- Pupils across the school receiving more individual and group support

You said... Bigger focus on mental health and wellbeing

Our response... Using a variety of funding streams, we have arranged for a Play Therapist to come into school one day a week. While this will be a limited service, we are confident it will make a difference to those who receive input. Thank you to our friends at *WithKids* for helping us to arrange this.



We will continue to use PATHS (<http://www.pathseducation.co.uk>) as our core resource for developing emotional literacy. This will be supported by another resource called *BounceBack* (<https://www.bounceback-program.com>) which focuses on wellbeing and resilience.

Our values:

Respect

Safe

Equality

You said... Improve our playground and outdoor space

Our response... There are limits to what we can change and install, due to the shared campus arrangements with Whitehill Secondary.

Maintenance of fences, playground surfaces and the school building is managed by the company Amey, who are responsible for the site. This is unusual for a primary school, but it's because we're in with Whitehill. Faults and damages are reported to them.

We got the playground markings painted a while ago, and have been using the forest more and more. Please note, the fence around this area is not to stop it being used, but rather to keep it as safe a space as possible. We've also bought in more playground resources.

Repair of the trim trail has been looked into, but is prohibitively expensive. However, we are grateful to one of our parents (Mr M with children in P1, P4 and P5) for removing the broken parts. It looks better already!

Other plans being put in place include:

- Having a bike and scooter shelter installed
- Tidying the garden area at the front of the school
- Transforming the broken shed into a shelter
- More litter-picking



You said... After-school clubs / music tuition

Our response... The ongoing restrictions in place over the last 18 months have meant that many of our usual activities have been unable to go ahead.

As restrictions continue to ease, we should be able to resume our after-school clubs. We have started planning these with our Active Schools Co-ordinator, and will get them started as soon as possible.

Our upper school pupils have been offered the chance to take up drumming and piping, with tuition being provided by music teachers from Whitehill Secondary.

You said... We (75% of respondents) agree there should be a return to one school day
(everyone attending 08:45 – 14:45)

Our response... This is still our ambition. However, the *return-to-school* guidance was clear that a staggered approach should continue for a while longer.

When we do return to one school day, we will keep the staggered breaks and lunchtimes, as this has helped with supervision and behaviour in the playground.

Our values:

Respect

Safe

Equality

School photographer



We have booked Tempest Photography to come in to take photographs. They will be visiting on Monday 6th September.

They will be able to take individual photos, as well as sibling group shots.

NB: This will only be siblings who actually attend Golfhill Primary.

We'll send a reminder nearer the time.

At home-time...

Please let us know if someone different is collecting your child at home-time (for example, a family member we haven't met before, or if they're going on a play-date).

We know there are lots of friendship groups and family relationships across the school, but we just need to know who's collecting who. This keeps us right and everyone safe.



Similarly, if your child is to start walking home themselves, when previously they've been picked up, let us know that too.

Wellbeing

We have pupils at Golfhill with nut allergies.



Please ensure that playtime snacks and packed lunches do not contain nuts. Thank you.



Please provide your child with at least one full water bottle each day.

The water fountain cannot currently be used.

Remember that fizzy drinks, energy drinks and chewing gum **should never** be brought to school. We encourage healthy snacks where possible.

Outdoor learning

In line with national and local advice, we aim to get learners outdoors as much as possible. This will inevitably mean that pupils (and staff!) will sometimes be out in the rain, so please provide your child with a waterproof jacket and appropriate footwear.

The weather in Glasgow is unpredictable, so regardless of the forecast, we recommend coming prepared for all seasons.



Our values:

Respect

Safe

Equality

Dates for your diary

<i>Non-uniform Day</i>	Friday 3 rd September (<i>donations welcome for school fund</i>)
<i>September Weekend</i>	Friday 24 th and Monday 27 th September
<i>In-service Day</i> (no pupils)	Friday 8 th October
<i>October Week</i>	Monday 11 th – Friday 15 th October
<i>Hallowe'en celebrations</i>	Friday 29 th October (<i>pupils may wear fancy dress</i>)
<i>School closes for Christmas</i>	Wednesday 22 nd December
<i>Christmas and New Year holiday</i>	Thursday 23 rd December – Tuesday 4 th January
<i>Pupils return to school</i>	Wednesday 5 th January
<i>Mid-term break</i>	Monday 14 th and Tuesday 15 th February
<i>In-service Day</i> (no pupils)	Wednesday 16 th February
<i>Purple Friday</i>	Friday 25 th February (<i>wear purple to celebrate diversity</i>)
<i>School closes for Spring Break</i>	Friday 1 st April
<i>Spring Break</i>	Monday 4 th – Monday 18 th April
<i>Pupils return to school</i>	Tuesday 19 th April
<i>May Day holiday</i>	Monday 2 nd May
<i>In-service Day</i> (no pupils)	Thursday 5 th May
<i>May Weekend</i>	Friday 27 th May
<i>Bank holidays (Spring / Jubilee)</i>	Thursday 2 nd and Friday 3 rd June
<i>Schools closes for summer</i>	Friday 24 th June

Keep in touch...



Golfhill Primary School
280 Onslow Drive
Glasgow
G31 2QF



0141 554 7723



headteacher@golfhill-pri.glasgow.sch.uk



@1Golfhill



<https://blogs.glowscotland.org.uk/gc/golfhill/>

Our values:

Respect

Safe

Equality