

THE SIMPLE SOLO FOR WHOLE BAND

THIS IS A SIMPLE SOLO USING THE SCALES SHOWN ABOVE THE CHORDS.

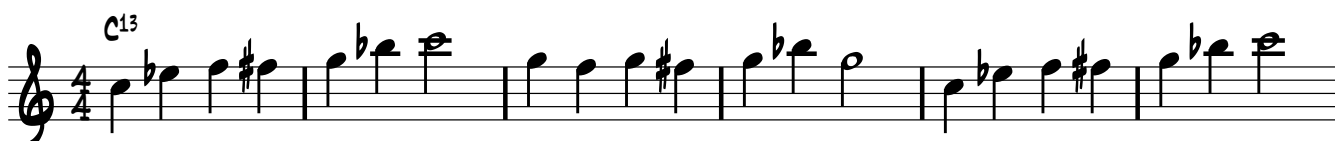
A SEPERATE SHEET HAS THE SCALES WRITTEN DOWN.

PLAY THROUGH THE SCALES FIRST, THEN PLAY THIS SOLO.

AN EXAMPLE OF A COMPLETE SOLO (WITH RHYTHMIC INTEREST!) IS INCLUDED ON ANOTHER PAGE AS A GUIDE.

NOW PRACTICE PLAYING OVER THESE CHANGES AND WORK ON CONSTRUCTING AN IMPROVISATION

BLUES SCALE



13

C¹³

DIMINISHED ARPEGGIO

MINOR PENTATONIC

E^o A^{7(b9)} D^{M7}

19

D^{M7/G} C^{#13} C¹³

DOMINANT SCALE

BLUES SCALE