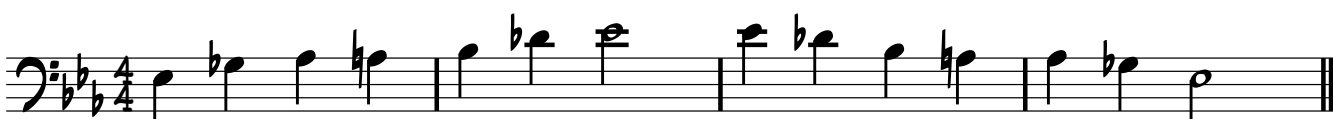


SCALES FOR SIDEWINDER IMPROVISATION

SIDEWINDER IS A MODIFICATION OF THE STANDARD BLUES FORM AND IS DOUBLE THE USUAL LENGTH IN BARS (24 BAR STRUCTURE). THE BLUES SCALE IS OFTEN USED AS THE BASIS FOR IMPROVISATIONS OVER THIS SEQUENCE BUT CANNOT BE USED THROUGHOUT DUE TO MODIFICATIONS TO THE CHORDAL STRUCTURE..

E^b BLUES SCALE - USED OVER THE CHORDS

E^b13 AND A^b13



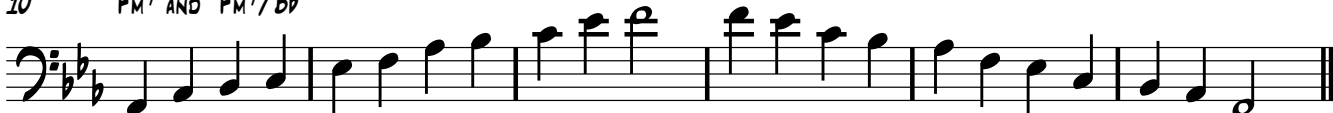
G DIMINISHED ARPEGGIO - USED OVER THE CHORDS

5 G^o AND C7(b9)



F MINOR PENTATONIC - USED OVER THE CHORDS

10 F^m7 AND F^m7/B^b



E DOMINANT - USED OVER THE CHORD

16 E¹³

