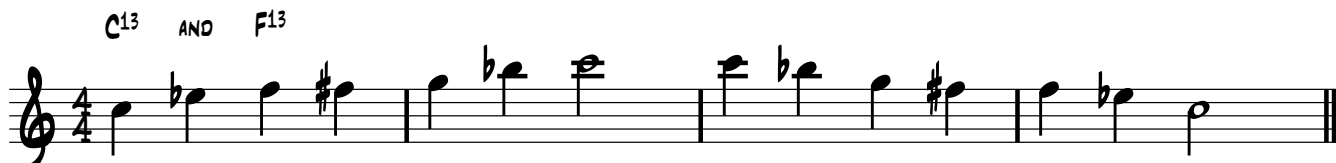


SCALES FOR SIDEWINDER IMPROVISATION

SIDEWINDER IS A MODIFICATION OF THE STANDARD BLUES FORM AND IS DOUBLE THE USUAL LENGTH IN BARS (24 BAR STRUCTURE). THE BLUES SCALE IS OFTEN USED AS THE BASIS FOR IMPROVISATIONS OVER THIS SEQUENCE BUT CANNOT BE USED THROUGHOUT DUE TO MODIFICATIONS TO THE CHORDAL STRUCTURE..

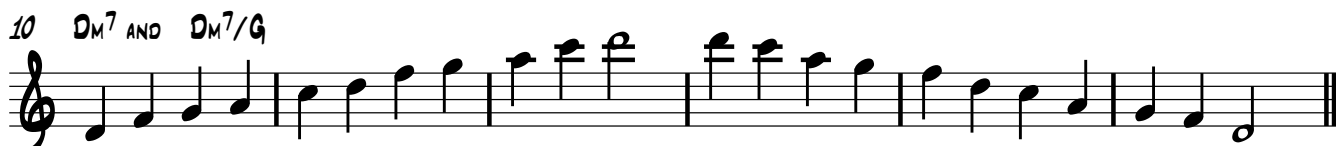
C BLUES SCALE - USED OVER THE CHORDS



E DIMINISHED ARPEGGIO - USED OVER THE CHORDS



D MINOR PENTATONIC - USED OVER THE CHORDS



C# DOMINANT - USED OVER THE CHORD

