

TROMBONE

ISTANBUL SOLO HELPER

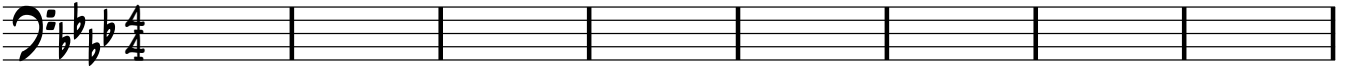
JOHN MILNE

♩ = 200

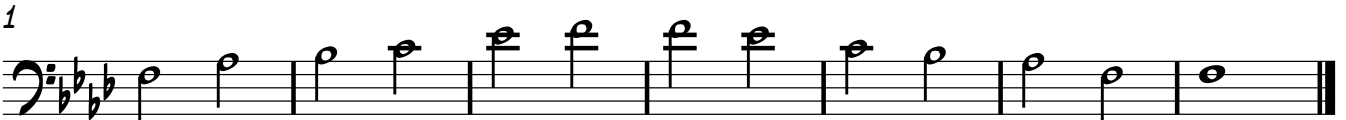
THESE ARE THE CHORDS FOR THE SOLO SECTION.

THEY MAY LOOK COMPLICATED, BUT THE GOOD NEWS IS YOU CAN PRODUCE A GOOD SOLO USING JUST 2 SCALES/ARPEGGIOS (OR EVEN 1)

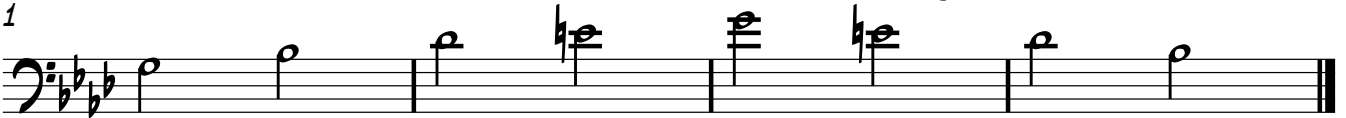
F_M7 F_M7 AbΔ DbΔ DbΔ Bbm⁹ C7b9 C7b9 G^oC7b9 F_M7 Ab13 Db13 C#5#9



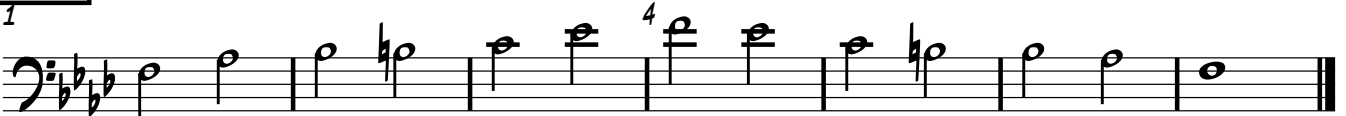
OPTION 1 THE MAIN SCALE IS THE MINOR PENTATONIC - HERE IT IS.....



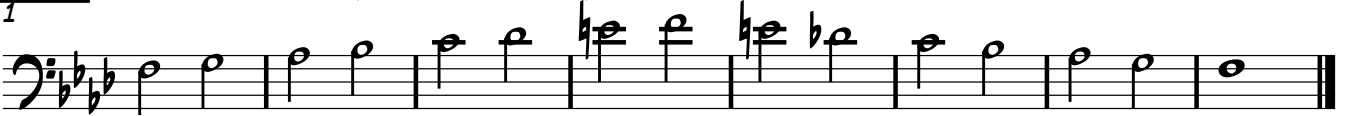
THIS ARPEGGIO WILL WORK WELL OVER BARS 5 AND 6 AND AGAIN ON 13 AND 14 (SAME BIT)



OPTION 2 IF YOU FANCY, YOU CAN ACTUALLY USE JUST A BLUES SCALE FOR THE WHOLE KIT AND KABOODLE....



OPTION 3 ...BUT IF YOU WANT TO GET FANCY, TRY USING THIS FOR THE MAIN PART... THE HARMONIC MINOR



AND THIS DIMINISHED WHOLE TONE SCALE OVER BARS 5 AND 6 AND AGAIN ON 13 AND 14 (SAME BIT)

