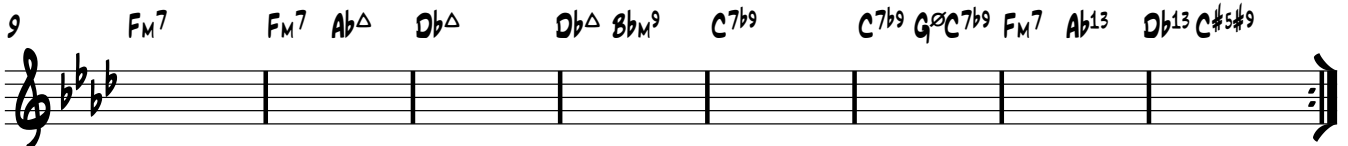
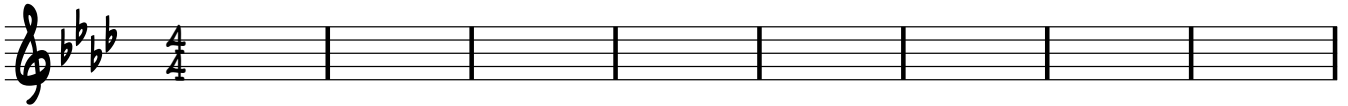


♩ = 200

THESE ARE THE CHORDS FOR THE SOLO SECTION.

THEY MAY LOOK COMPLICATED, BUT THE GOOD NEWS IS YOU CAN PRODUCE A GOOD SOLO USING JUST 2 SCALES/ARPEGGIOS (OR EVEN 1)

F_M7 F_M7 Ab^Δ Db^Δ Db^Δ Bb_M⁹ C^{7b9} C^{7b9} G^øC^{7b9} F_M7 Ab¹³ Db¹³ C^{#5#9}



OPTION 1

1 THE MAIN SCALE IS THE MINOR PENTATONIC - HERE IT IS....



1 THIS ARPEGGIO WILL WORK WELL OVER BARS 5 AND 6 AND AGAIN ON 13 AND 14 (SAME BIT)



OPTION 2

1 IF YOU FANCY, YOU CAN ACTUALLY USE JUST A BLUES SCALE FOR THE WHOLE KIT AND KABOODLE....



OPTION 3

1 ...BUT IF YOU WANT TO GET FANCY, TRY USING THIS FOR THE MAIN PART... THE HARMONIC MINOR



AND THIS DIMINISHED WHOLE TONE SCALE OVER BARS 5 AND 6 AND AGAIN ON 13 AND 14 (SAME BIT)

