

BASS GUITAR

ISTANBUL SOLO HELPER

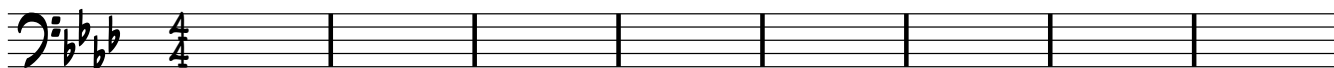
♩ = 200

JOHN MILNE

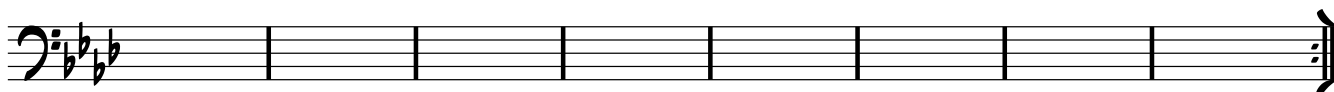
THESE ARE THE CHORDS FOR THE SOLO SECTION.

THEY MAY LOOK COMPLICATED, BUT THE GOOD NEWS IS YOU CAN PRODUCE A GOOD SOLO USING JUST 2 SCALES/ARPEGGIOS (OR EVEN 1)

F_M⁷ F_M⁷ A_b^Δ D_b^Δ D_b^Δ B_bM⁹ C^{7b9} C^{7b9} G^ØC^{7b9} F_M⁷ A_b¹³ D_b¹³ C^{#5#9}



9 F_M⁷ F_M⁷ A_b^Δ D_b^Δ D_b^Δ B_bM⁹ C^{7b9} C^{7b9} G^ØC^{7b9} F_M⁷ A_b¹³ D_b¹³ C^{#5#9}

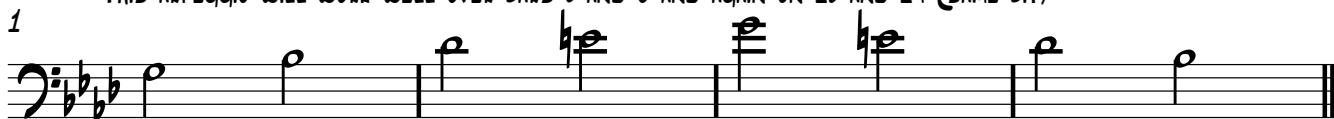


OPTION 1

THE MAIN SCALE IS THE MINOR PENTATONIC - HERE IT IS.....



THIS ARPEGGIO WILL WORK WELL OVER BARS 5 AND 6 AND AGAIN ON 13 AND 14 (SAME BIT)



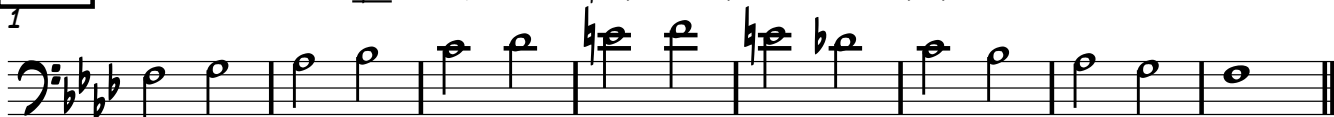
OPTION 2

IF YOU FANCY, YOU CAN ACTUALLY USE JUST A BLUES SCALE FOR THE WHOLE KIT AND KABOODLE....



OPTION 3

...BUT IF YOU WANT TO GET FANCY, TRY USING THIS FOR THE MAIN PART... THE HARMONIC MINOR



AND THIS DIMINISHED WHOLE TONE SCALE OVER BARS 5 AND 6 AND AGAIN ON 13 AND 14 (SAME BIT)

