

BARITONE SAXOPHONE

# ISTANBUL SOLO HELPER

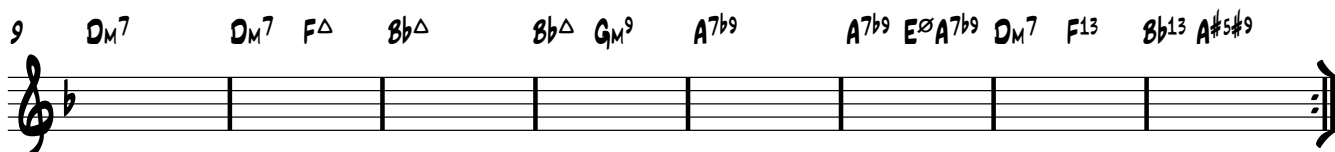
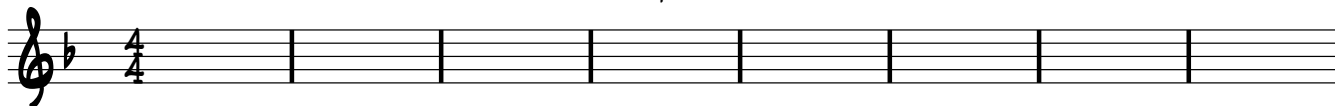
♩ = 200

THESE ARE THE CHORDS FOR THE SOLO SECTION.

JOHN MILNE

THEY MAY LOOK COMPLICATED, BUT THE GOOD NEWS IS YOU CAN PRODUCE A GOOD SOLO USING JUST 2 SCALES/ARPEGGIOS (OR EVEN 1)

D<sub>M</sub><sup>7</sup> D<sub>M</sub><sup>7</sup> F<sup>Δ</sup> B<sup>b</sup>Δ B<sup>b</sup>Δ G<sub>M</sub><sup>9</sup> A<sup>7b9</sup> A<sup>7b9</sup> E<sup>Δ</sup>A<sup>7b9</sup> D<sub>M</sub><sup>7</sup> F<sup>13</sup> B<sup>b</sup>13 A<sup>#5#9</sup>



**OPTION 1**

1 THE MAIN SCALE IS THE MINOR PENTATONIC - HERE IT IS.....



1 THIS ARPEGGIO WILL WORK WELL OVER BARS 5 AND 6 AND AGAIN ON 13 AND 14 (SAME BIT)



**OPTION 2**

1 IF YOU FANCY, YOU CAN ACTUALLY USE JUST A BLUES SCALE FOR THE WHOLE KIT AND KABOODLE....



**OPTION 3**

1 ...BUT IF YOU WANT TO GET FANCY, TRY USING THIS FOR THE MAIN PART... THE HARMONIC MINOR ....



AND THIS DIMINISHED WHOLE TONE SCALE OVER BARS 5 AND 6 AND AGAIN ON 13 AND 14 (SAME BIT)

