

ALTO SAXOPHONE

ISTANBUL SOLO HELPER

JOHN MILNE

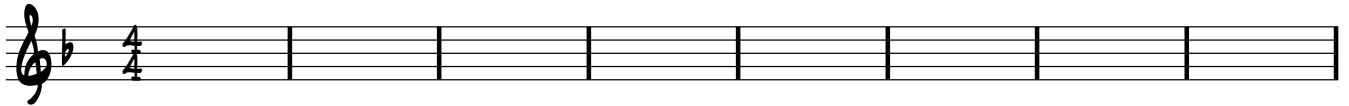
♩ = 200

THESE ARE THE CHORDS FOR THE SOLO SECTION.

THEY MAY LOOK COMPLICATED, BUT THE GOOD NEWS IS YOU CAN PRODUCE A GOOD SOLO

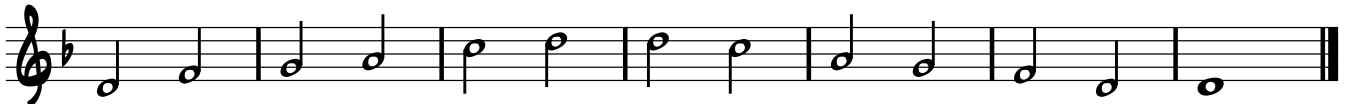
USING JUST 2 SCALES/ARPEGGIOS (OR EVEN 1)

DM7 DM7 FΔ BbΔ BbΔ Gm9 A7b9 A7b9 E∅ A7b9 DM7 F13 Bb13 A#5#9

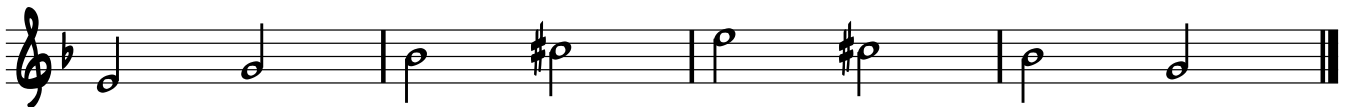


OPTION 1

1 THE MAIN SCALE IS THE MINOR PENTATONIC - HERE IT IS....

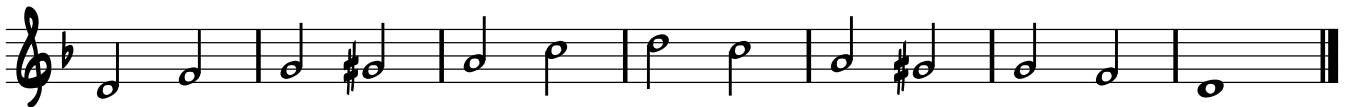


1 THIS ARPEGGIO WILL WORK WELL OVER BARS 5 AND 6 AND AGAIN ON 13 AND 14 (SAME BIT)



OPTION 2

1 IF YOU FANCY, YOU CAN ACTUALLY USE JUST A BLUES SCALE FOR THE WHOLE KIT AND KABOODLE...



OPTION 3

1 ...BUT IF YOU WANT TO GET FANCY, TRY USING THIS FOR THE MAIN PART... THE HARMONIC MINOR



AND THIS DIMINISHED WHOLE TONE SCALE OVER BARS 5 AND 6 AND AGAIN ON 13 AND 14 (SAME BIT)

