

Follow us on:



@camstraddenps



Aug/Sept 2024



## Newsletter

### Welcome Back!

We have had a wonderful start to the new session and our children have settled in fantastically with their new teachers. We are excited to see what the new session has in store and look forward to working with you to support your children to continue to learn, grow and flourish!

*Miss Grace*

### Drop Off & Pick-Up Arrangements

- Soft starts are available for P1 & P2 pupils each day from 8:50 am. Unfortunately, we are no longer able to offer this to other stages due to GCC cuts.
- Children are able to enter the internal playground but we ask that parents remain out with the internal fences.
- At home time, we ask that parents stand behind the yellow lines to ensure that gates do not become overcrowded. This helps teachers to identify parents as they dismiss the pupils.
- If it is raining heavily in the morning, and there is sufficient staffing, indoor spaces will be made available to pupils from 8:50am. Outdoor sheltered areas are also available on school grounds
- The school grounds are a non-smoking and dog free zone.

**Thank you for your support!**

### School Uniform

Our pupils have returned to school showing that they are 'Ready' to learn and are proud to be a pupil at Camstradden Primary School by wearing their school uniform.



Don't forget, you can order and buy a school Hoodie or Zoodie from the front office. Proceeds from sales go towards school funds for trips and treats!



**Hoodies £15/£17**  
**Zoodies-£19/£21**  
**(junior/adult)**

We also have a pre-loved uniform rail available. This is helpful for new pupils and for anyone looking for extra bits and pieces throughout the session.



**Any donations of good quality outgrown uniforms are greatly appreciated!**



## Free School Meals

&



## Clothing Grants

Families on low incomes may be eligible to receive a School Clothing Grant award of **£120** for a primary aged child and free school meals and breakfast club. Although all P1-P5 pupils in Glasgow receive free school meals, it is important that you sign up to ensure that your child receives all additional benefits. Please sign up for both below:

[www.glasgow.gov.uk/article/17885/Clothing-Grants-and-Free-School-Meals](http://www.glasgow.gov.uk/article/17885/Clothing-Grants-and-Free-School-Meals)

**Scan here for link or contact Jordan our Family Support Worker for help to sign up!**



## After School Care



Did you know that we now have a partnership with TASC after school care provision?

Mon to Friday 3pm to 5:45pm (Term Time)

**Location:** St. Clare's Primary School

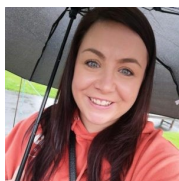
**Contact:** Kerry Allan on 0141 944 1758 or 07824390076 to find out more about costings and to book a place for your child .

**[www.tascafterschoolcare.org.uk](http://www.tascafterschoolcare.org.uk)**

A member of staff from our school escorts the children from Camstradden Primary School along to the TASC After School Care club.

## Family Support Worker

Jordan our fantastic Family Support Worker from 3D Drumchapel is available in school every **TUESDAY!**



She is able to help with free school meals/uniform grants, bus passes, benefits, form filling, white goods, fuel support, referrals to other agencies for example (food bank/citizen's advice) and much more!

Text or Phone: 07723 779950  
Email: [Jordan.robertson@3ddrumchapel.org.uk](mailto:Jordan.robertson@3ddrumchapel.org.uk)  
Facebook: Jordan R Drumchapel  
Twitter: @JordanR3D

## Contact Details:

0141 944 2971

[Headteacher@camstradden-pri.glasgow.sch.uk](mailto:Headteacher@camstradden-pri.glasgow.sch.uk)

Child Protection Co-ordinator- Miss Grace (HT)

Deputy Child Protection Co-ordinator: Mr Clark (DHT)

***Please ask to speak to a member of the Senior Leadership Team if you have any concerns about our pupils.***

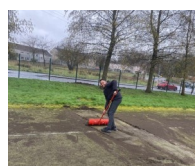


## Spotlight!

**Have you noticed our recent playground upgrades?**

In response to pupil voice we have worked hard to improve the school playgrounds.

Our pitch was becoming unusable due to a build up of mud and silt. Mr Lynch and the Primary 7s formed a Pitch Patrol and have worked hard to restore the pitch. Well done— what a difference!!



The children also expressed that they felt they had little to do in the playground. We have made a huge investment in new play equipment. Through fundraising and grants we hope to continue to add to this. It has been great to see the children enjoying the new equipment!





# Camstradden Primary - Every Day Counts

## Attendance Information for Families

At Camstradden Primary we are passionate about getting it right for the pupils we work with. In order for us to meet learners needs we require pupils to be in school, on time each day. Missing school negatively impacts on pupils academic and social development.

The following information explains the percentage of a pupil's attendance at school and what this means in days/learning missed. As per Glasgow City Council procedures, when a pupil's percentage falls, procedures are activated to help support and encourage regular attendance at school.

Attendance levels are calculated on a daily basis and all absences from school, **including Term Time Holiday Leave**, whether **authorised** or **unauthorised** will affect a student's percentage of attendance. You will be informed in writing should we have attendance concerns

### **Attendance Level 98% +**

This is the equivalent of **4 days off** during the year. This is above average and represents **very good** attendance. Thank you to all pupils and parents who achieved this.

### **Attendance Level 95% to 97%**

This is the equivalent of **5 to 9 days off** during the year. This is in line with the national average and represents **satisfactory** attendance.

### **Attendance Level 90% to 95%**

This is the equivalent of **10 to 19 days off** during the year. If your child's attendance continues to remain at this level or becomes lower, school staff will become concerned about the potential impact on your child's academic progress and achievement. You may receive a visit from our SLT/FSW and/or a letter from the school if your child's attendance is of concern.

### **Attendance Level 80% to 90%**

This is the equivalent of 20 to 38 days off during the year. You will receive a **letter from the school** and your child's **attendance will be monitored closely**. You may be invited to a meeting to discuss the impact of your child's attendance on their learning and progress in school.

### **Attendance Level less than - 80%**

This is the equivalent of more than 38 days off during the year. You may have had a visit from our SLT and FSW and will have had letters from the school regarding your child's attendance. You will also have been invited to the school to discuss your child's progress and supports in place. Social Work may also have been informed about concerns surrounding attendance if families do not respond to letters or engage with the school. As a result of lack of attendance your child may be referred to Social Work and the Scottish Children's Reporters Administration (SCRA). You may be invited to appear at a children's panel hearing and if your child's attendance does not improve, court proceedings may follow. This is a last resort but good attendance is vital to your child's success in school.



# SCHOOL CALENDAR 2024-2025



## AUGUST

- Pupils Return- Wed 14th
- School Photos- Thur 29th

## SEPTEMBER

- Drumchapel High- Open Evening- P6&7 Parents - Mon 9th
- Parent Open Afternoon- Thur 12th
- HOLIDAY- Fri 27th & Mon 30th

## OCTOBER

- Anti -Racism- Wear Red- Fri 18th
- HOLIDAY-Fri 11th-Fri 18th
- Class Halloween Parties- Thurs 31st

## NOVEMBER

- Parent's Night- Tue 12th & Thur 21st
- Children in Need- Fri 15th

## DECEMBER

- Christmas Fair- Thur 12th
- Nativity- Tue 17th & Wed 18th
- Class Christmas Parties- Thur 19th
- Schools Close- 2:30pm- Fri 20th

## JANUARY

- Pupils Return-Mon 6th

## FEBRUARY

- HOLIDAY-Mon 17th- Wed 18th
- Parent Open Afternoon- Thur 27th

## MARCH

- Parent's Night- Tue 4th & Thur 13th
- World Book Day- Thur 6th
- Red Nose Day-Fri 14th

## APRIL

- Schools Close- 2:30pm- Fri 4th
- HOLIDAY- Mon 7th- Mon 21st
- Pupils Return-Tue 22nd

## MAY

- HOLIDAY-Mon 5th
- HOLIDAY- Thur 22nd - Mon 26th
- Sport's Day- Date tbc..

## JUNE

- P7 DHS Transition Days- Wed 4th & Thur 5th
- P7 Leaver's Dance- tbc.
- Prize Giving & Graduation- Tue 24th.
- Schools Close- 1pm- Wed 25th

