

Follow us on:



Twitter

@camstraddenps



January 2023



# Newsletter

Welcome Back Everyone! We hope you have had a restful Festive Break. Despite 2022 seeming like a distant memory we had a very busy time last term. As you will be aware we had some very special visitors – Our HMI Inspectors. The team very much enjoyed their time with us and provided lots of positive feedback in relation to our school journey and how we support our young people and their families. A full report of our inspection will follow in due course. I would like to take this opportunity to again thank our pupils, staff, families and partners who contributed in many different ways to our inspection.

We have identified poor attendance as being our biggest barrier to learning. Almost all class teachers have shared that if the children who are regularly absent from school were in school on time each day, their attainment would improve significantly. As such a relentless focus for us this term will be on improving attendance and reducing late coming. This focus is supported by the HMI Inspectors who visited us in December which will be highlighted in their upcoming report. We have provided further information within this months newsletter in relation to late coming and attendance.

We have lots of exciting plans ahead of us. I look forward to working with the Camstradden School Community again this term.

*Miss Davidson* (Acting Head Teacher)



## Reminder

### Home Learning & Digital Approaches

You will have received a copy of your child's log in details to the three platforms above. Teachers will use these to share information with parents about their children's learning and to set some homework activities in reading and numeracy. Please save these websites or download from your app store on electronic devices at home to further support your child's learning. Please contact the school if you require any assistance to access these.

## Parent Pay & Parent Portal



Your child has been issued with log in details for both platforms. Please ask Mrs MacAulay at the school office for another copy if you do not have these!



[parentsportal.scot](https://parentsportal.scot)

**Parent Pay** is the online payment solution used in all mainstream primary and secondary schools in Glasgow. ParentPay is used to pay for all school trips, meals, concert tickets, uniforms, etc and will enable us to remove all cash and cheques from schools. In addition, you can now pre-order your child's lunches.

**Parents Portal** will provide access to information about school, allow you to complete the annual data check, update your child's details, view the school calendar and complete electronic permission slips and forms. This will reduce the need printing of letters and use of the costly texting system. We will be phasing out the use of texts and letters, so please sign up to this as soon as possible.

Camstradden Primary, for many years, has partnered with Glasgow's Pre-Loved Uniforms to provide free quality uniforms to those who need it. Sadly, Glasgow's Pre-Loved Uniforms are no longer in operation. We would like to take this opportunity to thank them for their hard work and support over the years.



### Parent Council Contact Info

Please get in touch with the Parent Council if you would like to raise any issues.

## Road Safety



It is important to relay to children the importance of road safety. Please ensure your child can be seen when crossing the road and remind them to use pedestrian crossings where possible. Remember be safe, be seen!

### Staffing Update

Sadly we said goodbye to two staff members over the Festive Break. Miss Carrick (Class Teacher) has worked tirelessly with us to provide targeted support for our pupils. She has now moved on to Clyde Primary. We wish her every success in her future endeavours and hope to see her again soon. Mrs Heuston (Clerical) also left over the Festive Break. We would like to wish her all the best for the future and thank her for her hard work whilst working with us at Camstradden Primary.



Communication with our families and wider school community is very important to us. We want to keep in touch with you in order to keep you updated about your child/children's progress. As such it is vitally important we have the most up to date contact details for you. Glasgow City Council are now using the Groupcall Xpressions app as a main method of communication with families. This is a free app for the school and for families. Further information about Groupcall Xpressions is attached to this newsletter.

**We still have a very large number of families who have not signed up for the Groupcall Xpressions app. As this is our main method of communication with families and as such it is vital that you download the app. Details about how to do so and further information about Groupcall are attached to this newsletter. We also have over 50 families who are still not provided the school with an email address.**

**Please contact the school to provide us with an email address if you have not already done so and download the Groupcall Xpressions app.**



### **Contact Details:**

0141 944 2971

Headteacher@camstradden-pri.glasgow.sch.uk

Child Protection Co-ordinator: Miss Davidson (HT)

Deputy Child Protection Co-ordinator: Mr Clark (DHT)



***Please ask to speak to a member of the Senior Leadership Team if you have any concerns about our pupils.***



# Attendance & Late Coming



## Our Approach

Attending school and taking part in learning is a child's right and is fundamental to making sure that our young people become successful learners, confident individuals, effective contributors and responsible citizens. At Camstradden Primary we are committed to improving the life chances of all of our young people. For children and young people to succeed in education they need to attend school to access the learning and support that will help them to achieve and attain.

In Glasgow City Council when a pupil's attendance level falls below 95% this becomes a concern for the school and as such we will follow council and school procedures to support our families to ensure their child attends school on time each day. Further information about our approaches to improving attendance can be found on the *Improving Attendance* section on our school website –

<https://blogs.glowscotland.org.uk/gc/camstraddenprimaryschoolgcc/improving-attendance/>

## Parent/Carer Responsibilities

As the parent/carer of the child you are legally responsible to provide an education for your child. If you have not engaged with the school to discuss and implement ways to support and improve your child's attendance you will be invited to a Maximising Attendance Meeting at the school. We understand that there can be occasions when it can be difficult to ensure your child attends school regularly and there can be reasonable excuses as to why a child cannot attend school. There may be information that the school is not aware of that you could share. It is in your interest to attend any scheduled meetings to discuss your child's attendance and the ways to support your child's attendance at school.

## Late Coming

As part of our monitoring of attendance and late -coming we will contact families whose children are regularly late to school to offer support and guidance. It is important that pupils arrive in school on time each day. At Camstradden Primary the school day starts at 9am. It is important that pupils arrive in school prior to this time and line up in the playground with their peers when the bell sounds at 9am. The playground is supervised by school staff from 8.45am.

## Late Coming – The Facts

- Late coming can affect achievement
- Late coming disrupts lessons
- Late coming can embarrass and/or upset your child
- 5 minutes late every day adds up to 3 days of learning lost each year
- 10 minutes adds up to 6 days of learning lost each year
- 15 minutes adds up to 10 days of learning lost each year
- 20 minutes adds up to 13 days of learning lost each year
- 30 minutes adds up to 19 days of learning lost each year



## Reporting Absence

### **How to report your child absent from school:**

You should call the Pupil Absence Reporting (PAR) Team on: 0141 287 0039 to report your child absent from school. You can call the line every school day from 8:00am. You should call the absence reporting line before 9.30am on the first day of your child's absence.



**Please do not use Seesaw to report your child's absence as this may not be seen by school staff and is not GCC protocol for reporting absence.**

## The Pupil Absence Reporting (PAR) team:

The Pupil Absence Reporting (PAR) service is provided by a dedicated team of experienced Education support staff. The information you provide to the team is updated in the school's system when you call, so the school is immediately aware of all absence information.

The Pupil Absence Reporting(PAR) service has been created to provide an efficient flexible way for parents/carers to report absence. We recognise that in some circumstances, for example, to report or discuss a sensitive issue, you may still require to speak directly with the school. The following guidance should be applied:

### Please phone the PAR team to report the following absences:

**Sickness absence:** if the absence lasts more than one day, parents and carers are required to call on subsequent days to provide an update. A letter should be provided to the school when the child returns from their absence.

**Medical or dental appointments:** Parents and carers should call the team to report absences for medical or dental appointments. The school requires a letter or appointment card as evidence of the appointment to ensure permission is given to be absent from class.

### Please phone the school directly to report the following absences:

To make sure you receive the right support you require, parents and carers should still contact the school directly to report absences of a sensitive or personal nature, for example:

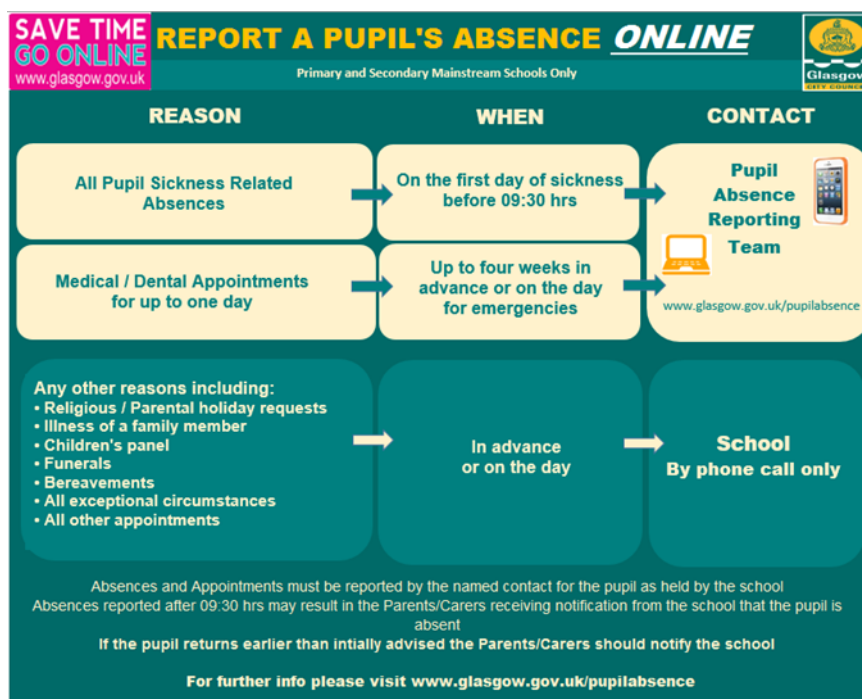
Bereavement

Serious illness, for example, an absence which is going to last more than one week

Injury, for example, broken limb

Contagious diseases or illness

You can also report your child's absence by using an online form, though you need to register with myaccount to do so. More information can be found here: <https://www.glasgow.gov.uk/pupilabsence>



## School Pick Up

At Camstradden Primary our primary goal is to ensure the safety and wellbeing of all of our pupils. As such school staff ensure that children in Primary 1 to 4 are escorted from the building at 3pm. All children from Primary 1 to Primary 7 are reminded by their class teacher and through assemblies that if there is nobody there to pick them up or they are unsure of the travelling home arrangements they should remain with their teacher or member of school staff who will contact their parent/carer to clarify. We kindly ask all families to reiterate this message to all children.

We would also like to remind families that school finishes at 3pm. Whilst we appreciate that on occasion circumstances such as traffic or appointments may result in you collecting your child late from school however we kindly ask all families to adhere to the schools opening and closing times and collect their child on time from school at 3pm. We are seeing increasing numbers of children being collected late from school sometimes up to 50 minutes late. This is not something that can be managed by the school long term. All late collections are recorded and where concerns arise we will arrange a meeting to discuss this and any further action with the relevant parent/carer.



### Office Opening Times

Monday – Thursday 8.30am to 4pm

*Closed from 12.15pm until 1pm for lunch*

Friday 8.30am to 3.30pm

*Closed from 12.15pm until 1pm for lunch*

Contact Us On—0141 944 2971

If there is no one available to take your call please leave a message and we will get back to you as soon as possible. Alternatively you can email the school using the email address below –

**[headteacher@camstradden-pri.glasgow.sch.uk](mailto:headteacher@camstradden-pri.glasgow.sch.uk)**



# Camstradden Primary - Every Day Counts

## Attendance Information for Families

At Camstradden Primary we are passionate about getting it right for the pupils we work with. In order for us to meet learners needs we require pupils to be in school, on time each day. **Currently attendance levels for some of our pupils are of concern.** Missing school negatively impacts on pupils academic and social development.

The following information explains the percentage of a pupil's attendance at school and what this means in days/learning missed. As per Glasgow City Council procedures, when a pupil's percentage falls, procedures are activated to help support and encourage regular attendance at school.

Attendance levels are calculated on a daily basis and all absences from school, **including Term Time Holiday Leave**, whether **authorised** or **unauthorised** will affect a student's percentage of attendance.

You will be informed in writing at the end of each term should your child's percentage of attendance fall below 90%.

### **Attendance Level 98% +**

This is the equivalent of **4 days off** during the year. This is above average and represents **very good** attendance. Thank you to all pupils and parents who achieved this.

### **Attendance Level 95% to 97%**

This is the equivalent of **5 to 9 days off** during the year. This is in line with the national average and represents **satisfactory** attendance.

### **Attendance Level 90% to 95%**

This is the equivalent of **10 to 19 days off** during the year. If your child's attendance continues to remain at this level or becomes lower, school staff and our Home School Support Worker (HSSW), based at Dumchapel High School, will become concerned about the potential impact on your child's academic progress and achievement. You may receive a visit from our HSSW and/or a letter from the school if your child's attendance is of concern.

### **Attendance Level 80% to 90%**

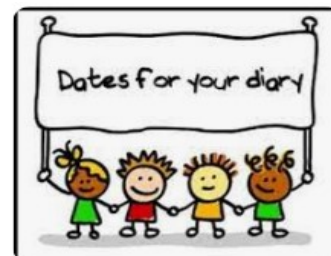
This is the equivalent of 20 to 38 days off during the year. You will receive a **letter from the school** and your child's **attendance will be monitored closely**. You may be invited to a meeting to discuss the impact of your child's attendance on their learning and progress in school.

### **Attendance Level less than - 80%**

This is the equivalent of more than 38 days off during the year. You may have had a visit from our HSSW and will have had letters from the school regarding your child's attendance. You will also have been invited to the school to discuss your child's progress and supports in place. Social Work may also have been informed about concerns surrounding attendance if families do not respond to letters or engage with the school. As a result of lack of attendance your child may be referred to Social Work and the Scottish Children's Reporters Administration (SCRA). You may be invited to appear at a children's panel hearing and if your child's attendance does not improve, court proceedings may follow. This is a last resort but good attendance is vital to your child's success in school.



## Dates for the Diary



### January 2023

- **Tuesday 10th January 2023**  
*Industrial Action—School closed to pupils*
- **Monday 16th January 2023**  
*Industrial Action—School closed to pupils*
- **Thursday 12th January and Friday 13th January 2023**  
*Primary 7 STEM Transition Event—Drumchapel High School*
- **Friday the 20th of January 2023**  
*Primary 2b Assembly Showcase (9-9.30am). All Primary 2b families welcome*
- **Week beginning the 23rd of January 2023**  
*After school clubs starting this week*

### February 2023

- **Monday the 6th of February 2023**  
*Childsmile Fluoride Varnish—Primary 4-7*
- **Friday the 10th of February 2023**  
*Babes in the Wood Pantomime— Theatre Royal (Primary 7a & Primary 7/6)*
- **Friday the 10th of February 2023**  
*Primary 6-5 Assembly Showcase (9-9.30am). All Primary 6/5 families welcome.*
- **Monday 13th February 2023 and Tuesday 14th February 2023**  
*February Mid Term Break—School closed to pupils*
- **Wednesday 15th February 2023**  
*Inservice Day—School closed to pupils*

### School Term Dates 2022-2023

---

#### **December - Christmas and New Year**

- Schools close at 2.30 pm on Thursday, 22 December 2022
- Friday, 23 December 2022 - Tuesday 3 January 2023 (Christmas holidays)

#### **January**

- Schools return on Wednesday 4 January 2023

#### **February mid term break**

- Monday, 13 February 2023
- Tuesday, 14 February 2023
- Wednesday, 15 February 2023 (In-service day)

#### **April - Spring Holiday (Easter)**

- Schools close at 2.30 pm on Friday, 31 March 2023
- Monday, 3 April - Friday, 14 April 2023 (Spring Break)
- Schools return on Monday, 17 April 2023

#### **May**

- Monday, 1 May 2023 (May Holiday)
- Monday 8 May 2023 (Coronation Public Holiday)
- Thursday, 25 May 2023 (In-service day)
- Friday, 26 May 2023 and Monday, 29 May 2023 (May Weekend)

#### **June**

- Schools Close at 1.00 pm on Friday 23 June 2023