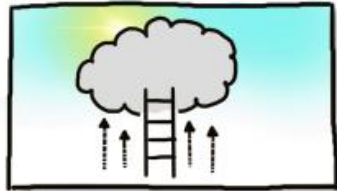
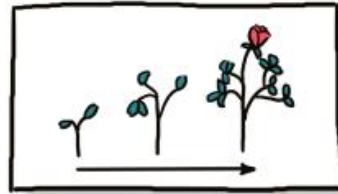


BellaHouston Academy's...
VISION & VALUES



ASPIRATION



GROWTH



ACHIEVEMENT



BELONGING



BELLAHOUSTON ACADEMY



RESPECT

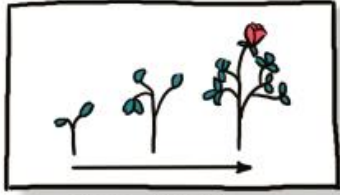
We **BELONG** here, and will **ASPIRE**, **GROW** and **ACHIEVE** together, within a culture of **RESPECT**.

**4
WEEKS
IN
HOW
ARE WE
DOING?**

Bellahouston Academy's...
VISION & VALUES



ASPIRATION



GROWTH



ACHIEVEMENT



BELONGING



BELLAHOUSTON ACADEMY



RESPECT

We **BELONG** here, and will **ASPIRE**, **GROW** and **ACHIEVE** together, within a culture of **RESPECT**.



BELONGING

Visit the Blazing Squad Initiative for help with all uniform items!

Bellahouston Academy's... UNIFORM POLICY



BELONGING

By wearing our Bellahouston Academy uniform, we show that we BELONG here. We have RESPECT for ourselves, for pupils and staff, for our families for our community and for our school.



RESPECT



SCHOOL TIE 	WHITE SHIRT 	BLACK PULLOVER 	BLACK TROUSERS
BLACK CARDIGAN 	BLACK BLAZER 	BLACK HIJAB 	BLACK SHOES

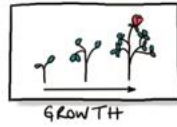
When your class teacher asks you to remove any pullovers, cardigans or hoodies with large logos, you should do as instructed.

NOT ACCEPTABLE UNIFORM ITEMS:

SPORTS CLOTHING
or large LOGOS
-joggers, leggings
tracksuits

Pullovers, cardigans,
skirts or trousers in
colours other than BLACK.
Jeans or denim.

Even if you are timetabled for PE or to attend Glasgow School of Sport that day, you must arrive at school in full school uniform not in sports kit.



Attendance:

750 have +90%



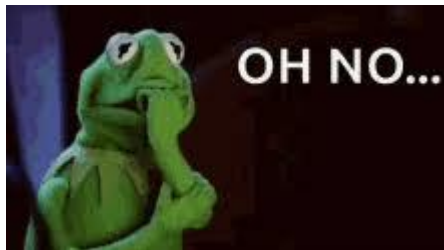
229 – 76% - 90%

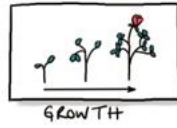
94 – 50% -90%

50 less than 50%

Attendance

Range	Attendance Aug - July	Actual Number of School Days Missed	Approximate Number of Lessons Missed
High	95%	9	59
Medium	90%	19	125
Low	85%	28	185
Very Low	80%	38	251
Exceptionally Low	75%	47	310
Serious Concerns	70%	57	376





Time Keeping

Brilliant

- 367 – no lates!

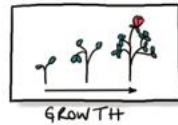
- 219 – more than 10 lates



Range	When your child misses just...	Each week that is equal to...	Which over a year is...	From S1 to S6 this equates to...
Medium	10 mins per day	50 mins of learning	1 week	1.5 months of learning
High	20 mins per day	1 hour 40 mins of learning	2.5 weeks	4 months of learning
Exceptionally High	30 mins per day	2 hours 30 mins of learning	3.5 weeks	5 months of learning
Serious Concerns	40 mins per day	5 hours of learning	7 weeks	10 months of learning

Key messages!

Thank you to all the pupils who are following our school values every day!



**Thank
you!**



**Mobile phones
are banned
from the
classroom**

Important reminders:

- Tutor time starts at 8.50. This is compulsory.
- Joggies aren't school uniform.
- Don't leave class to get water. This is why you have a break.
- Lunch ends at 13.20. You need to be in school by then.
- You are not allowed to wander corridors at break/lunch.
- Please make sure your families contact details are correct.