

---

# NOTRE DAME HIGH SCHOOL

---



Support for Pupils

Dyslexia Assessment &

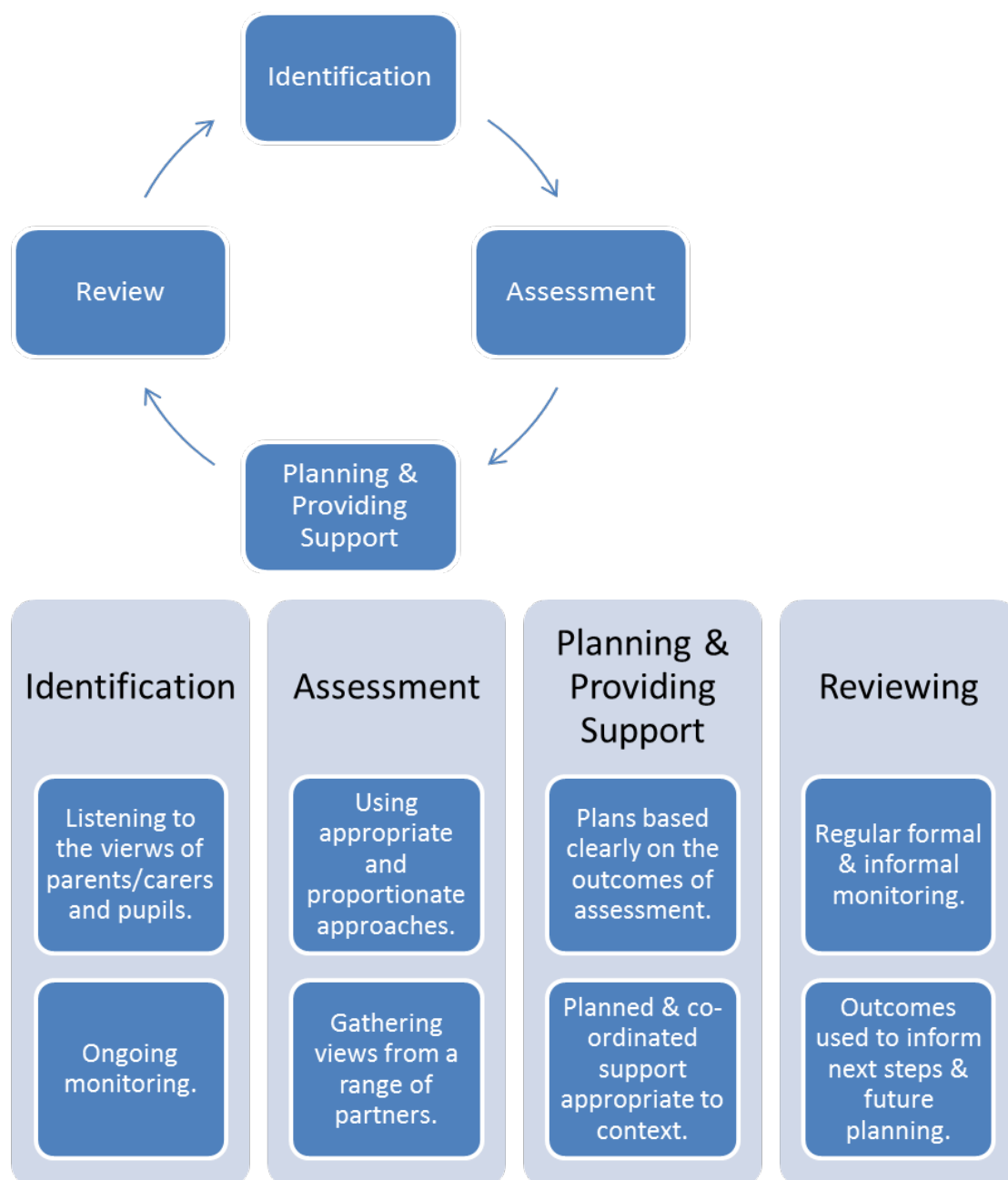
Supporting Dyslexic Pupils

## Supporting Dyslexic Pupils

Notre Dame High School aims to ensure that all pupils are provided with the support they require in order to help them work towards achieving their full potential. Some pupils may require additional support to achieve their full potential. This need for additional support exists where a pupil is encountering barriers to learning and development. Notre Dame High School follows Glasgow City Council's policy on supporting young people with dyslexia / suspected dyslexia. Further information on this policy is available:

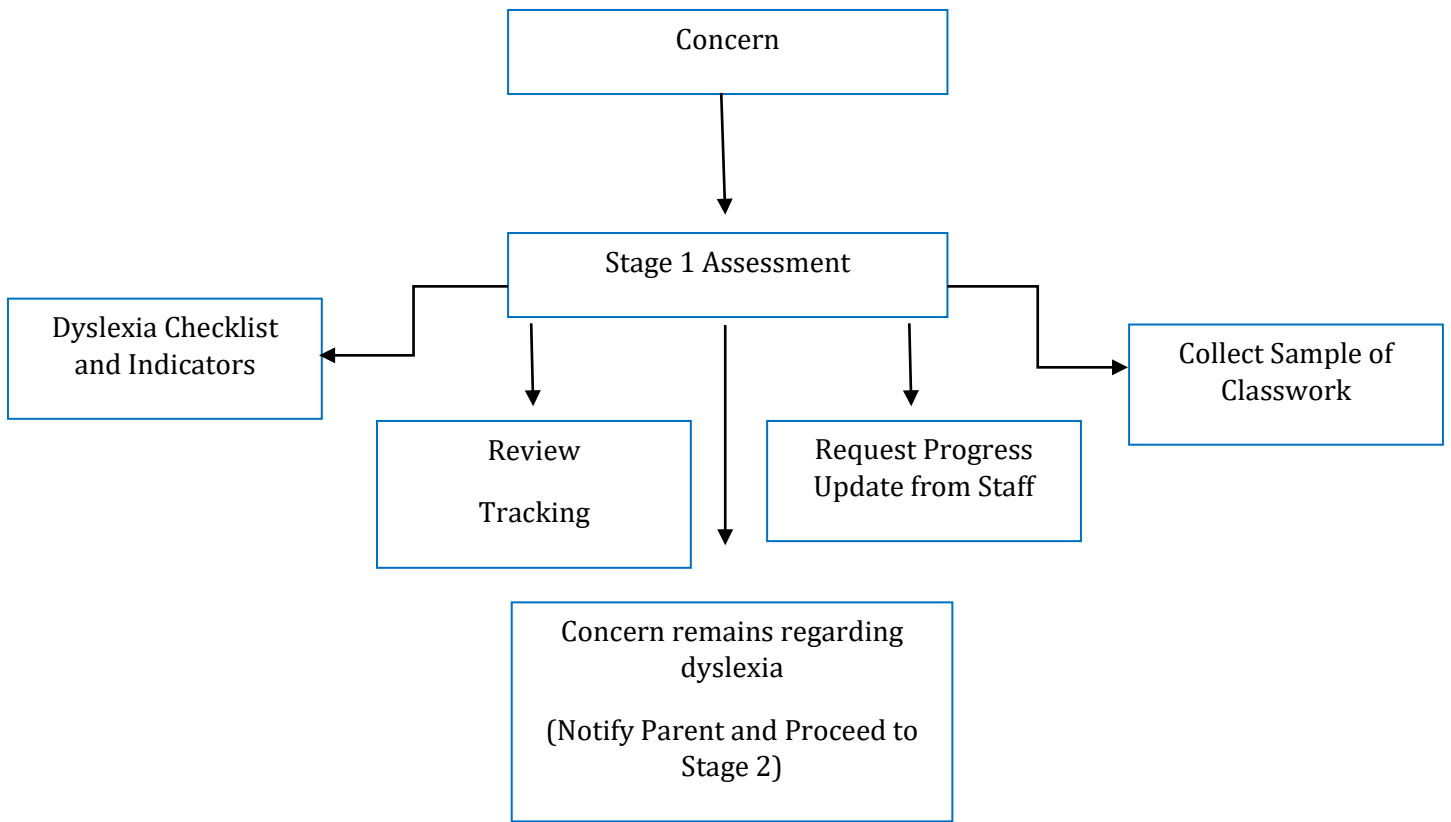
[www.goglasgow.org.uk/Pages/Show/838](http://www.goglasgow.org.uk/Pages/Show/838)

Additional support needs are met by the Support for Learning department through the cycle of identification, assessment, planning and providing support, and review.

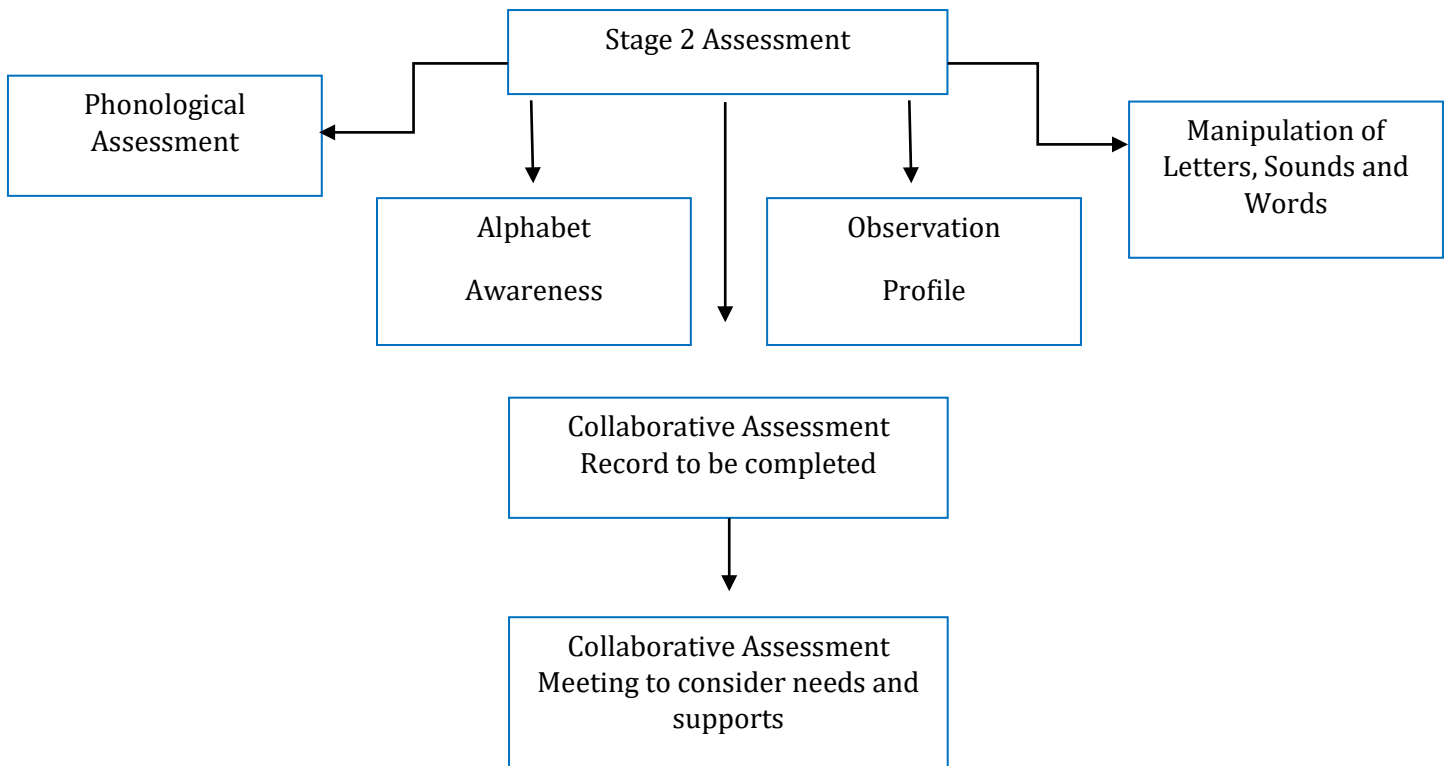


A concise version of our approach is detailed below:

## Stage 1



## Stage 2



## Potential Needs and Supports as basis of initial discussion

- WAP
- ICT
- Overlays
- SQA AAR
- Tutorials
- In-class support
- Information to staff and recorded on Care Files
- Advice to staff – Support Strategies