



# WAID ACADEMY

*Multi Pertransibunt Et Augebitur Scientia*

**Transition Booklet  
2021**



Welcome!

In August 2021, it will be my great pleasure to welcome you to The Waid Academy, along with all the other new first year students.

I hope that you are now beginning to think about coming to Waid next session. Possibly you are wondering what it is going to be like. Perhaps you are slightly worried about coming to Waid because it is going to be quite different from your present school and you are going to have new teachers and new classmates.

This booklet has been written by teachers as well as current first year students to give you an idea of what life is like at The Waid Academy. You will start to form your own impressions about Waid when you meet our teachers, support staff, and prefects.

The Waid Academy offers more opportunities to its pupils now than it has ever done in its long and successful past. It will be up to you to take advantage of these opportunities to the best of your ability. You can be sure that we shall do all we can to help you make your time at Waid Academy as enjoyable and as beneficial as possible, and that we are very much looking forward to your arrival as our new first years in 2021.

Mrs E Smart  
Rector



## Contents

About The Waid Academy .....	4
Your First Day .....	5
The School Day .....	7
School Reception & Office .....	16
Pupil Support & Guidance .....	16
Additional Support Needs .....	17
S1 Subjects.....	18
English .....	18
Science.....	19
Modern Languages.....	19
Mathematics & Computing .....	20
Business Education.....	21
Design, Engineering, and Technology (DET).....	21
History .....	22
Modern Studies .....	22
Geography.....	23
Religious & Moral Education (RME) .....	23
Music .....	24
Art.....	24
Drama.....	25
Consumer & Food Technology (CFT).....	25
Personal, Social, and Health Education (PSHE) .....	26
Physical Education (PE) .....	27
Extra-Curricular Activities .....	28
Frequently Asked Questions.....	30
Additional Information.....	33

The information provided in this booklet was correct at the time of issuing. Giving the current circumstances caused by the COVID-19 pandemic, the information is subject to change. However, any updates will be communicated via the usual procedures.



## About The Waid Academy

The Waid Academy was opened in September 1886 on its old site and is a non-denominational, co-educational, comprehensive secondary school.

The school moved to its current site in June 2017 and provides secondary education for all children aged 12 to 18 in the East Neuk of Fife, a picturesque area devoted to fishing, farming and holidaymaking.

The school has a proud tradition and sits at the heart of the local community. The new purpose-built facility brings together many local council services into one building such as Council Office Front Line Support, Community Library, Community Café, Police Scotland, and CLD, as well as having space for Fife College. We are proud of our heritage as well as keen to embrace new technology that is available to us in our new building.

The school curriculum fully embraces Curriculum for Excellence with a Broad General Education in S1-S3 and a Senior Phase in S4-6 where learners will take National Qualifications. A full programme of Nationals, Highers, Advanced Highers, and Wider Achievement Courses, as well as Skills for Work Courses are available to all pupils. The school has recently formed links to the Foundation Apprenticeship scheme.

There is a rich and varied extra-curricular programme, and pupils are encouraged to participate in the wider life of the school. We have very strong links with our associated primary schools and working with them on a number of projects is a key priority. With an active Pupil Leadership Team and Parent Council, The Waid Academy works together with pupils and parents and partners to ensure the best possible provision for learners.



# Your First Day

## What to Do

You're not the first! All pupils are supported throughout their journey as Waid Academy pupils – and this begins on day one.

The school day starts at 08:45 am – so make sure to give yourself plenty of time to get to school before the bell. And it's okay to be early, in our new school there are plenty of modern spaces to socialise with your friends before the start of the day.

Follow the current pupils to the pupil entrance. This is at the side of the school through the red gates.

When you come into the school, there will be teachers to guide you on where to go next. Most likely you'll be sent to the assembly hall, regardless though of what's planned, there will be people around to keep you right.



## What to Bring

If you can, try to make sure you bring the following items to school:

- School bag
- Stationery (pens, pencils, rubber, ruler, sharpener, and scientific calculator)
- PE kit
- Books & jotters (after your teachers have given you them)
- Lunch or lunch money

## School Uniform

There are many benefits to wearing a school uniform: it creates a sense of belonging, it tends to increase attainment, and the school is able to present smarter looking learners. But Waid's school uniform has become much more than just a blazer, it has possibly become one of the most recognisable objects in the local community. The school regularly receives positive comments from members of the public regarding how smart our pupils look whilst out in the public. Wear your school uniform with pride knowing that you are part of the Waid family!

The school uniform consists of:

- School blazer
- School tie
- Neutral shirt
- Black trousers/skirt
- Black jumper/cardigan
- Black shoes

It is mandatory to wear school uniform at the Waid Academy.



# The School Day

## Timetable

You will be issued with a timetable on your first day. This piece of paper tells you all the information you need to know about your subjects.

It will look similar to this:

	1	2	3	4	5	6	7
Monday	Social Subjects Miss Christie 212	Health & Wellbeing Miss Hall SHALL	Mathematics Mr Anderson 109	Home Economics Mrs Henderson 042	French Miss Wrigley 218	English Mrs Logan 241	Science Mr McGregor 124
Tuesday	Business Mr Bennett 225	History Miss Crabb 205	French Miss Wrigley 218	Technologies Miss Robertson 046	English Mrs Logan 241	Science Mrs Pearson 127	PE Mr Hughes SHALL
Wednesday	Home Economics Mrs Henderson 232	Mathematics Mr Anderson 109	Art & Design Mr Eaves 229	PSHE Ms O'Donnell 217	English Mrs Butler 241	Drama Mrs Garrie 119	French Mr Gauffre 213
Thursday	Science Mr McGregor 124	Art & Design Mr Eaves 229	English Mrs Butler 241	Social Subjects Miss Christie 212	Mathematics Mr Anderson 109	Music Miss Fettes 114	History Miss Crabb 201
Friday	Science Mr McGregor 124	French Mr Gauffre 217	PE Mr Hughes SHALL	RME Miss Jervis 205	Mathematics Mr Anderson 109		

Your timetable provides information on:

- Subject
- Teacher
- Room number

All rooms in the building are given a 3-digit number.

The first digit always indicates which floor the room is on.

- 0XX – Ground Floor
- 1XX – First Floor
- 2XX – Second Floor
- SHALL – Sports Hall



# Map

To help you navigate the school, you will probably also be issued with a map.







## Times

The school day starts at 08:45 am. There are 7 periods on Monday, Tuesday, Wednesday, and Thursday. On Friday there are 5 periods. Every period is 50 minutes long.

Monday – Thursday	
Period 1	08:45 – 09:35
Period 2	09:35 – 10:25
Period 3	10:25 – 11:15
Interval	11:15 – 11:30
Period 4	11:30 – 12:20
Period 5	12:20 – 13:10
Lunch	13:10 – 13:55
Period 6	13:55 – 14:45
Period 7	14:45 – 15:35
End of School Day	

Friday	
Period 1	08:45 – 09:35
Period 2	09:35 – 10:25
Period 3	10:25 – 11:15
Interval	11:15 – 11:30
Period 4	11:30 – 12:20
Period 5	12:20 – 13:10
End of School Day	



## Buses

For pupils who are entitled to free bus travel, a colour system is in place. The colour of your pass indicates which bus you can get on. The buses will display this colour on their display panel and there will be teachers at the school to help with any issues at the end of the day.

Pupils who aren't included in the free-bus-travel catchment area may board these buses but must pay a travel fee. Pre-paid Bus passes are also available from the relevant companies.

The following timetables are correct up until 15<sup>th</sup> August 2021. For more information, please contact the school.

### Stagecoach Services

Service No	95	395	395
Route Code	A	B	B
Travel Pass Colour	Green	Orange	Purple
Leven	07:40	-	07:50
Scoonie, Letham Glen, Northbound	07:44	-	07:57
Lundin Links, Lundin Links Hotel	07:52	08:04	08:05
Lower Largo, adj Harbour	-	08:07	08:08
Upper Largo, opp Post Office	07:57	08:12	08:13
Colinsburgh, adj Library	08:03	08:18	08:19
Kilconquhar, adj Church	08:08	08:21	-
Elie, opp High Street	08:14	-	-
St Monans, opp Station Road	08:19	-	-
Pittenweem, Tollcross, Eastbound	08:24	08:28	08:29
<b>Waid Academy Bus Park</b>	<b>08:29</b>	<b>08:33</b>	<b>08:34</b>

Service No	95	95	395	395	395	395
Route Code	C	C	D	D	D	D
Travel Pass Colour	Green	Green	Orange	Orange	Purple	Purple
	Mon-Thurs	F	Mon-Thurs	F	Mon-Thurs	F
<b>Waid Academy Bus Park dep.</b>	<b>15:40</b>	<b>13:20</b>	<b>15:40</b>	<b>13:20</b>	<b>15:40</b>	<b>13:20</b>
Pittenweem, Tollcross, Westbound	15:45	13:25	15:45	13:25	15:45	13:25
St Monans, adj Station Road	15:52	13:32	-	-	-	-
Elie, High Street	15:57	13:37	-	-	-	-
Kilconquhar, opp Church	16:02	13:42	-	-	-	-
Colinsburgh, Opp Library	16:07	13:47	15:55	13:35	15:55	13:35
Upper Largo, adj Post Office	16:14	13:54	16:02	13:42	16:02	13:42
Lower Largo, Opp Harbour	-	-	16:06	13:45	16:05	13:46
Lundin Links, adj Crescent Road	16:18	13:58	16:10	13:50	16:10	13:50
Scoonie, Lethan Glen, Southbound	16:22	14:02	-	-	16:14	13:54
Leven	16:26	14:06	-	-	16:18	13:58



**Service No** 95  
**Route Code** A  
**Travel Pass Colour** Blue

Crail, Garden Centre 08:15  
 Crail, Pinkerton Road 08:17  
 Crail, High Street 08:21  
 Cellardyke, Toll Road 08:29  
 Anstruther, Harbour 08:33  
**Waid Academy Bus Park 08:36**

**Service No** 95 95  
**Route Code** B B  
**Travel Pass Colour** Blue Blue  
**Mon-Thurs F**

**Waid Academy Bus Park**  
**dep.** 15:40 13:20  
 Anstruther, opp Harbour 15:43 13:23  
 Cellardyke, adj Toll Road 15:48 13:28  
 Crail, opp Shoregate 15:57 13:37  
 Crail, adj Sauchope Crescent 16:01 13:41

## A1 Services

### Blue passes

ROUTE –WD1  
 Local Service Route operated from Sea Road/Balmakin/Arncroach/Pittenweem – Waid Academy

ROUTE CODE A	ROUTE CODE B
--------------	--------------

Monday – Friday AM	M-T H	FRI	
	15:25	13:05	Waid Academy ARRIVE
07:43 Sea Road (Methil Police Station)	15:40	13:20	Waid Academy DEPART
07:45 Methilhaven Road (Toll Bar)	15:46	13:26	Pittenweem Charles Street
07:48 Sainsbury's Bus Stop(Leven)	15:47	13:27	Inch Farm
07:53 Letham Glen	15:50	13:30	Ovenstone
07:56 Lundin Links (Old Manor)	15:55	13:35	Arncroach
07:59 Leven Road (Opp Post Office L/Links)	16:00	13:40	Carnbee
08:02 Drumeldrie	16:04	13:46	Wester Kellie
08:04 Charleton Golf Course (Road End)	16:10	13:50	Balmakin
08:10 Balmakin	16:16	13:56	Charleton Golf Course (Road End)
08:14 Wester Kellie	16:18	13:58	Drumeldrie
08:20 Carnbee	16:21	14:01	Leven Road (Opp Post Office L/Links)
08:25 Arncroach	16:24	14:04	Lundin Links (Old Manor)
08:30 Ovenstone	16:27	14:07	Letham Glen
08:33 Inch Farm	16:32	14:12	Sainsbury's Bus Stop(Leven)
08:34 Pittenweem Charles Street	16:35	14:15	Methilhaven Road (Toll Bar)
08:40 Waid Academy	16:37	14:17	Sea Road (Methil Police Station)



## Yellow passes

ROUTE –WD2  
Local Service Route operated from Methil / Kilconquhar / Abercrombie / St Monans / Pittenweem  
– Waid Academy

ROUTE CODE A	ROUTE CODE B
--------------	--------------

Monday – Friday AM	M-T H	FRI	
	15:25	13:05	Waid Academy ARRIVE
07:41 Sea Road (Methil Police Station)	15:40	13:20	Waid Academy DEPART
07:47 Windygates Cross	15:45	13:25	Pittenweem Tollcross
07:50 Kennoway Shopping Centre	15:50	13:30	St Monans Elmgrove Garage
07:53 Kennoway (Leven Road)	15:53	13:33	Abercrombie
07:58 Leven Bus Station	15:58	13:38	Cairney Crossroads
08:01 Scoonie Road	16:00	13:40	Kilconquhar Church
08:05 Leven Road (Lundin Links)	16:02	13:42	Muircambus
08:08 Leven Road (opp Post Office L/Links)	16:04	13:44	Balchrystie Road End
08:10 Drumeldrie Road End	16:05	13:45	Drumeldrie Road End
08:11 Balchrystie Road End	16:07	13:47	Leven Road (opp Post Office L/Links)
08:13 Muircambus	16:10	13:50	Leven Road (Lundin Links)
08:15 Kilconquhar Church	16:14	13:54	Scoonie Road
08:17 Cairney Crossroads	16:17	13:57	Leven Bus Station
08:22 Abercrombie	16:22	14:02	Kennoway (Leven Road)
08:25 St Monans Elmgrove Garage	16:25	14:05	Kennoway Shopping Centre
08:30 Pittenweem Tollcross	16:28	14:08	Windygates Cross
08:35 Waid Academy	16:34	14:14	Sea Road (Methil Police Station)

## Brown passes

ROUTE –WD3  
Local Service Route operated from Methil/Colinsburgh/Elie/St Monans/Pittenweem - Waid  
Academy

ROUTE CODE A	ROUTE CODE B
--------------	--------------

Monday – Friday AM	M-T H	FRI	
	15:25	13:05	Waid Academy ARRIVE
07:49 Wellesley Road (Methil Library)	15:40	13:20	Waid Academy DEPART
07:52 Wellesley Road (Tower Bar)	15:43	13:23	Pittenweem Tollcross
07:53 Bawbee Garage (Shell Station)	15:48	13:28	St Monans Elmgrove Garage
07:54 Leven Bus Station	15:54	13:34	Elie High Street
07:58 Scoonie Road	15:57	13:37	Earlsferry
07:59 Letham Glen	16:04	13:44	Kilconquhar Church
08:01 Largo Road (Leven)	16:06	13:46	B942, Cairney Crossroads
08:02 Leven Road (Lundin Links)	16:08	13:48	Colinsburgh Main Street
08:12 Colinsburgh Main Street	16:18	13:58	Leven Road (Lundin Links)
08:14 B942, Cairney Crossroads	16:20	14:00	Largo Road (Leven)
08:16 Kilconquhar Church	16:21	14:01	Letham Glen
08:22 Earlsferry	16:22	14:02	Scoonie Road
08:26 Elie High Street	16:26	14:06	Leven Bus Station
08:31 St Monans Elmgrove Garage	16:27	14:07	Bawbee Garage (Shell Station)
08:35 Pittenweem Tollcross	16:28	14:08	Wellesley Road (Tower Bar)
08:40 Waid Academy	16:31	14:11	Wellesley Road (Methil Library)



## Computer Logins, Fobs, and Locker Keys

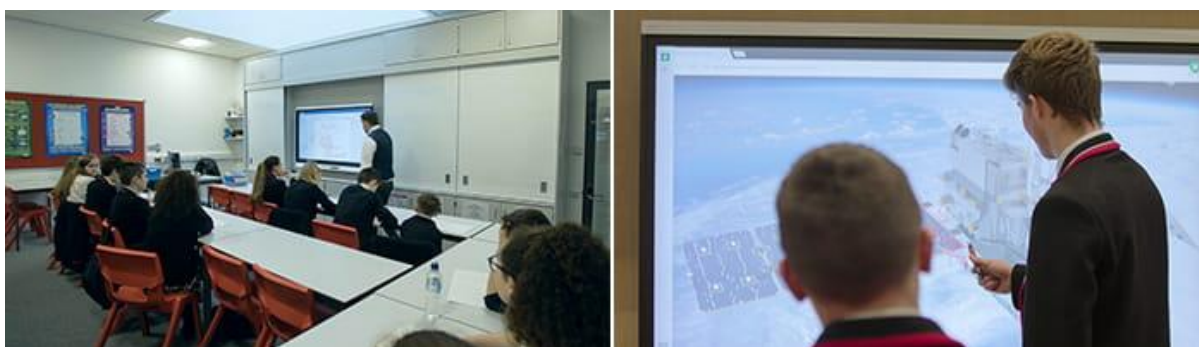
When the new school was opened, a significant investment was made in order to equip the school with the latest technology. This included installing interactive smartboards or large high-definition televisions in every classroom; new laptop, tablet, and computer technology; and a keyless security system.

On your first day, you will be given a username and password that you will use to log in to laptops and computers. You will also have access to a Glow account. We suggest that you save your work onto your Microsoft OneDrive so that you can access your work from any computer – both at school and at home.

You will also be issued with a fob. This fob will allow you to access certain areas of the school.

All pupils at Waid Academy are allocated lockers. Currently, due to Covid Protocols pupils are unable to access their lockers at this time. When you can eventually access your lockers, you can use this to store books you aren't using, PE kits, or anything else you don't want to carry about for the whole day. Make sure you don't lose your fob or locker key though, as there is a replacement fee! Pupils who play certain musical instruments will be allocated a larger locker to store their instrument. For even larger instruments, there are cupboards in the music department for storage.

You will only be allowed to access your locker at certain times: before the start of the day, break, lunch, or at the end of the day. So, make sure you are well organised because teachers won't be able to let you out of class to go to your locker. The same rules apply for water bottle filling – keep topped up at break and lunch time.



## School Café

S1 pupils will be expected to stay within the school grounds until the end of the day (this includes lunch time). After the October holidays, pupils will be allowed to leave the school at lunchtimes if they choose.

For the first term, pupils should either bring a packed lunch to eat in the atrium or bring money to purchase food from the school café. Pupils may eat their lunch in the atrium, up the centre staircase, or in the playground.

The school café has a varied menu and meets most special dietary requirements but S1 pupils may only use the Public café (located in the library) if they are accompanied with an adult. The School Café is only open to S5/S6 pupils.

## Social Spaces

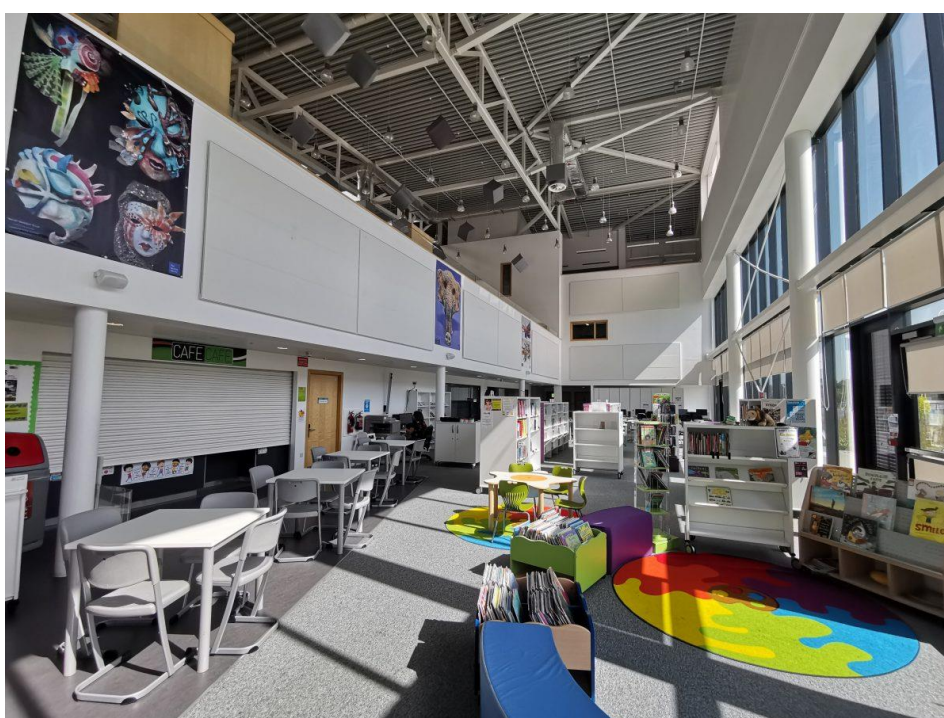
There are many social spaces throughout the school. However, at certain times of the day, you must stay in certain areas. Before the day begins, at break, and at lunch, S1 pupils are allowed to commune in the atrium, up the centre staircase, or in the playground. Unfortunately, you are not allowed on the first or second floors unless a previous arrangement has been made with a teacher.



## Library

All S1 classes visit the library during one of their timetabled English classes. You will be introduced to the various library resources and asked to choose a book to read in class. You can keep this book for three weeks. If the book you are looking for is not on the shelf, the book can be requested from another library within a week.

So, whatever you would like to read – whether it is the most recent teen novel or factual information book for a school project – remember to pay a visit to the school library!



## Fitness Suite

The Fitness suite is accessible to pupils during curriculum time only. If they want to use the Fitness Suite at lunchtimes or after school then they have to be accompanied by a supervising member of PE staff/other staff.



## School Reception & Office

The School Office opens at 08:30 am each day to deal with all enquiries and telephone calls. Mrs Penman and Mrs Reekie will deal with pupil enquiries at reception and some parent enquires over the phone. You should go to reception to pay for school trips, get a new bus pass, or hand in any documents/letters.

The main office is located next to the pupil entrance. Mrs Kilgour, Miss Gardner, Mrs Knight, Mrs Ritchie & Mrs Reekie are based here and deal with many aspects of school administration. For some enquiries you may be sent to the school office, however, you should go to the school reception first unless told otherwise.

## Pupil Support & Guidance

Many of you will go through your time at The Waid Academy with very little need for support, apart from the ongoing interest and assistance provided by your Pupil Support Teacher.

You will meet your Pupil Support Teacher several times throughout first year. They can be contacted at any time to discuss problems you may be facing – including friendships, bullying, schoolwork, or any general worries.

You will regularly meet with the teacher from your own House.

- St Andrew House – Mr McGuigan
- St Adrian House – Mrs Henderson
- St David House – Ms O'Donnell

We are a caring school and there are people here to help you





## Additional Support Needs

At Waid Academy, Support for Learning staff work with certain pupils in class and also sometimes in the support base (OCC). This large department is equipped with a variety of equipment to help you in your learning.

The OCC can assist you in any personal, learning, or behavioural difficulties you may be having.

Mr Urquhart is the Principal Teacher of Additional Support Needs and is supported by a team of Support for Learning Teachers and Pupil Support Assistants.

### *Support for Learning Teachers*

Miss Anderson  
Mrs McLuskie  
Mrs Richards  
Mrs Taylor  
Mrs Thornton

### *Pupil Support Assistants*

Mr Barr  
Ms Cuthbert  
Ms Hogg  
Mrs Kwiatowski  
Mrs Laing  
Ms Pryde  
Mrs Wilson  
Miss Provan



# S1 Subjects

The following information has been prepared by each academic department.  
PTC – Principal Teacher Curriculum

## English

Mrs Butler  
Mr Blair  
Mrs Brown

Mrs Logan  
Miss McCallum  
Mr Robinson

Welcome to the English department at Waid Academy! Whatever you want to do now and in the future, excellent skills in Reading, Writing, Listening and Talking will be vital! Over your years at Waid Academy, we hope that you will enjoy developing these skills with us!

In S1 you will experience the following:

- Reading a whole range of stories, poems and plays that will make you laugh, make you sad, make you scared and make you think.
- Writing from your imagination, your own experiences, or giving your opinions.
- Talking in groups and to an audience of your classmates.
- Listening and responding to what your new school friends and teachers have to say.
- Viewing and responding to a range of media texts such as films, interviews and adverts

We look forward to reading your stories, poems, play scripts, and newspaper articles.

During S1 you will have the opportunity to take part in competitions, a theatre visit, and reading activities. Most important of all, we hope you enjoy English, work hard in class and at home, learn lots, and have fun!



## Science

Mrs Ogilvie (PTC Science)  
Mrs MacDonald  
Mrs Henderson  
Mrs Pearson

Mr McGregor  
Miss Paterson  
Miss McElroy  
Mr Lillico

In Science, you cover level 3 CfE outcomes over 2 years. The course deals with material taken from Biology, Chemistry and Physics, including a lot of practical work in the laboratory.

Assessment is based on knowledge and understanding, problem solving, and practical skills including investigations. The knowledge and understanding and problem solving is assessed by written tasks and by exams at the end of S1. The practical skills are assessed continually throughout the course.



## Modern Languages

Ms Wrigley (PTC Languages)  
Mr Gauffre

At Waid, the modern language that you will be studying is French. In French you will learn about France and French people, and learn how to speak, read and write in their language. You will get the opportunity to explore a topic of interest relating to the country and develop communication skills by presenting it to the class. In S1 you will get a chance to take part in a competition which showcases your knowledge of vocabulary and spelling. A French drama company will perform an interactive play allowing you to experience the language you have been learning in an authentic and relevant context.



# Mathematics & Computing

Mr Letham (PTC Mathematics & Computing)  
Mr Anderson  
Mr Black  
Mr McGuigan

Dr Montgomery  
Ms O'Donnell  
Mrs Woods

The Maths Department receives information from your primary school about the Maths you have been working on to enable you to progress at the correct level. Assessments will take place throughout the year to show how you are progressing.

Your homework will take many different forms. You may be asked to research a topic, revise and learn facts, prepare answers to present to your classmates, complete set questions, bring in objects related to your class work, or work on your own or with others to find a solution using higher order thinking skills. All of this will help increase your understanding and confidence in Maths and numeracy. You will be introduced to aspects of Computing through IT in different subjects throughout the school.



You should bring the following equipment to maths every lesson:

- Calculator
- Pencil (you cannot use a pen in maths)
- Rubber and ruler
- Jotters/textbooks (these will be given to you on your first lesson)

## S1 Pupil Comments

- *"I like maths because it is fun and there is a sense of challenge in the work."*
- *"Maths at Waid is good because teachers help a lot, encourage you and make it fun."*
- *"I was quite worried that maths would be really hard but it's not, it's great. You get to do new things like algebra and the teachers are very encouraging."*
- *"You might be thinking that maths is boring but at Waid it is a whole lot better. Equations is the best topic, it's tricky to solve them but fun to do."*

## Taster questions

1. A frog is climbing a well 31 metres deep. It climbs 4 metres in one hour. But for every 4 metres it climbs it then slides down 1 metre and rests for an hour. How long will it take to climb out of the well?
2. Think of a number. Double it and add 4. Multiply by 6 and subtract 18. Divide by 3, subtract 2 and divide by 4. How does your answer compare with the number you first thought of? Try it again, starting with a different number.



## Business Education

Mr Logan (PTC Technology)  
Mrs Mitchell

In first year, the Business Education Department provides training in Information and Communications Technology (ICT) and an introduction to Business. It is important that every pupil knows how to use a computer – not just to play games on, but for a range of applications which will also help in other subjects e.g. producing tables of figures, graphs, charts, reports, etc.

You will learn skills on how to input, edit and present text attractively, how to create databases, how to use spreadsheets effectively and produce PowerPoint presentations involving a number of skills and techniques. The Business programme involves a number of activity-based units including marketing, finance, and human resources.



## Design, Engineering and Technology (DET)

Ms Robertson  
Mr McNally  
Mr Spence

You are introduced to the “Design Process” by designing and making articles like a Key tab, Spatula, Toy Racing Car and Plastic Letter Rack. Design Folios are produced for each project. Elements of Graphic Communication are introduced including Technical drafting, illustration and Computer Aided Graphics (CAG).



# History

Mr Moller (PTC Social Subjects)  
Miss Herd

In History you will learn about people and events in the past. You will use different types of evidence to help you build a picture of how people lived in Scotland from the earliest times to fairly recent times. Historians are like detectives and in History you will find yourself carrying out several investigations.

# Modern Studies

Mr Walker  
Miss Herd

Modern Studies informs you about people and their place in Society today. It allows you, as a young person, to become informed about local, national, and international communities and so be able to take an active part in society when you grow up. In your first year you will look at representation and participation at local and national level. You will have the opportunity to participate in a mock election. You will gain an insight into what it would be like to live under dictatorship rule and what democracy is. You will also learn about the war in Syria and poverty in Scotland.



# Geography

Miss Braid  
Miss Christie

In Geography you will:

- Work with a range of Maps/Atlases and learn how to read them
- Learn about the weather and how it influences both physical and human life
- Study Earth Forces, including Volcanoes, Earthquakes and Tsunamis
- Make the link between weather and climate and look at the causes, impact and solutions to climate change
- Attend a trip to Dynamic Earth and experience a simulated Earthquake
- Learn about the world's ever-growing population! How long will it take to surpass 8 billion people?

## Religious & Moral Education (RME)

Mr Duncan  
Miss Jervis

The S1 course is designed to give pupils insight into how people (including themselves) think. It is a challenging subject and extremely important. Pupils will be given opportunities to find out about different religions and customs in an attempt to promote further understanding of other races and cultures in our society.

They will also be given the opportunity to ask and explore life's BIG QUESTIONS e.g. "Is there life after death?", "Are there ghosts?" and "What's the meaning of life?". This means that they have time to reflect and express their own viewpoints, and answers to the questions studied. The moral aspect of RME is new and equally important. Reflecting on values (such as honesty, fairness, justice etc.) and what they may mean in practice are all of part of RME.



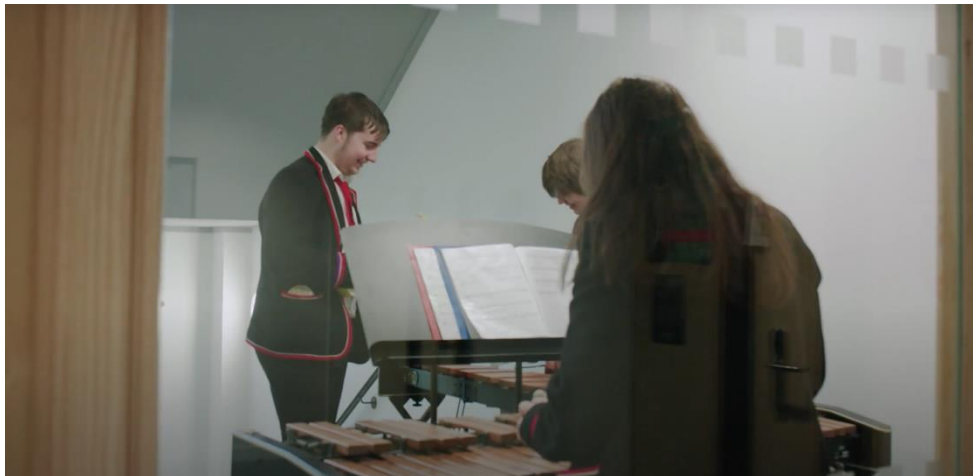
# Music

Mrs Mackay (PTC Expressive Arts)  
Miss Bain

You will have one or two periods of music each week and will do a wide variety of activities, including classroom percussion, drum kit, singing, keyboard, playing and listening to pieces of music.

You will also learn some useful musical knowledge, do a project on a musical instrument and have the opportunity to make up some music of your own.

There may be some opportunities to learn to play a musical instrument outwith the classroom. There are also various musical groups and a choir in which you are encouraged to participate in. If you have learned to play an instrument at Primary School, you will continue to do so at Secondary School.



# Art

Mr Eaves  
Mrs Latona  
Mr Murray

Art and Design involves drawing, painting, sketching, model making, pottery, printmaking, design and critical work. When it comes to your report, you are assessed on all your work, not just one piece.





## Drama

Mrs Heather Hayes

You will have one period of Drama per week and will learn a range of skills including teamwork, problem solving, communication, improvisation, characterisation and confidence. You will respond to a variety of stimuli and work with your classmates to develop pieces of work for performance by expressing your ideas and developing characters and story lines. S1 pupils will also have opportunities to learn about the use of costume, props, set, sound and lights within the drama performance. Outwith the classroom, pupils can take part in extracurricular activities such as the Drama club and theatre excursions.

## Consumer & Food Technology (CFT)

Ms Corlett

Mrs Henderson

The aim of Consumer and Food Technology is to give you the chance to develop life skills required for day to day living. CFT is a practical subject where you will learn how to cook and how to design and make an environmentally friendly product using the sewing machine. The course looks at our diet and how the choices you make can affect your health.

Here are some of the topics you will cover:

- Safety and Hygiene
- Food and Textile Technology
- Designing and Making
- Healthy Eating and Nutrition
- Consumer Issues



## Personal, Social, and Health Education (PSHE)

PSHE is taught by the Pupil Support Teachers and sometimes other staff.

Throughout your time at Waid, in PSHE classes you will have the chance to develop a deeper understanding of yourself (personal); the skills you need for everyday life and an understanding of important issues affecting the society in which you live (social) and given advice on how to lead a healthy life (health).

You will develop your personal and social knowledge in class through discussion, role play, the use of DVD's, ICT, and worksheets.



# Physical Education (PE)

Mr Kowbel (PTC Health & Wellbeing)  
Mrs Anderson

Miss Craig  
Mr Gibbons

Activities covered in PE include:

Hockey	Basketball	Netball
Football	Dance	Volleyball
Softball	Rugby	Gymnastics
Athletics	Cricket	Social Dancing

- If you are fit enough to attend school, then you are expected to take part in Physical Education activities
- You must always bring appropriate kit
- Having no kit is not an acceptable excuse for not taking part
- If you cannot take part for medical reasons you must have a valid note or supporting medical certificate
- Refusing to take part will lead to sanctions

## Can I wear any type of clothing for P.E.?

You should wear clothing suitable for the activity.

## What should I bring for outside activities?

If you are outdoors you should wear a tracksuit, sweatshirt or other previously agreed alternative. Suitable waterproof outdoor clothing may be worn.

## What should I bring for indoor activities?

If indoors, shorts, with either a t-shirt or polo shirt and appropriate footwear would be acceptable.

## Can I wear football tops from my favourite team?

Clothing must be in line with the school dress policy and should not feature anything that could be considered inappropriate.

## What about jewellery?

Jewellery should be removed. Your PE teacher may be able to securely store valuable items – or put them in your locker before coming to PE.



A wide selection of activities take place after school and at weekends (see the page on extra-curricular activities for more details). Everyone is encouraged to take part in clubs with the aim of representing the school, Fife, and Scotland. Remember, participation is the key to success!



## Extra-Curricular Activities

Waid Academy is proud to offer a variety of extra-curricular activities. Although the activities for next session are still to be confirmed (and so are the Teachers who will supporting the activities), have a look at last year's selection to get an idea for what might interest you.

Name of Club	Day	Time	Location	Staff	Age Group	Description
<b>Music</b>						
Scottish Group	Monday	Lunch	Music Dept	Mr Robinson	All	A relaxed meeting of people who wish to learn or develop their Scottish music skills.
Choir	Tuesday	Lunch	Hall	Mrs McKay	All	We sing a variety of music popular, classical and musicals. We perform at a variety of events throughout the year ( there is no auditions ).
String Group	Wednesday	Lunch	Hall	Mrs Holligan	All	Any pupil who learns a string instrument in and out of school are welcome to join.
Wind Band	Thursday	Lunch	Hall	Mrs McGlashan	All	Any pupil who learns wood wind, brass or percussion in or out of school is welcome.
"Annie" Musical	Friday	After School	Hall	Mrs Garrie, Mrs McKay	All	Take part in this years production of Annie which will be in June.
<b>Art</b>						
Informal Art Sessions	Monday to Thursday	Lunch	Art Dept	All Art Staff	All	These are drop in art sessions designed to develop art skills and also as study support
<b>Citizenship and HWB Clubs</b>						
Eco Schools	Tuesday	After School	Rm 127	Mrs Pearson	All	This years focus will be on bio diversity in the school grounds and growing veg and wild flowers and herbs
Model United Nations	Monday (tbc)	Lunch	Rm 212	Mr Walker	All	Come along to find out more about taking part in MUN and learn the skills of debating and public speaking as well as learning more about international issues.
P.R.I.D.E	Thursday	Lunch (13:25)	Rm 243	Miss Craig	All	Come along for a friendly chat about inclusion and LGBT issues.
Health and Wellbeing Club	Monday	Lunch (13:30)	Rm 119	Mrs McKay	All	
Scripture Union	Wednesday	Lunch	Rm 111	Dr Montgomery	All	The group will be looking at the big questions in life and what the Bible has to say to help us answer them.
Fair Trade Group	Wednesday	Lunch	Rm 232	Mrs Mitchell and Mr Bennett	All	Want to help stamp out poverty, provide water and education for others, stop child labour exploitation, cut down on pesticides and pollution? Fairtrade Club may be the place for you! Each term we carry out a series of events to raise both money and interest in global issues and the Fairtrade movement which aims to help stop the exploitation of workers and provide them and their families with ways to earn a living wage. We need people to bake, make, eat cake, organise and plan for our events! New volunteers always welcome.
<b>Computing and ICT</b>						
You Tube Club	Mon and Wed	Lunch	Rm 102	Mr Black	All	YouTube club will allow students a medium to broadcast vlogs, infographics, games recording and lots more.



## Extra-Curricular Activities

Technologies						
N5 Hospitality Practical Cookery Masterclass	Monday	15:35 - 17:30	Rm 42	Miss Corlett	All	For those in N5 Hospitality to develop their skills in relation to the final practical
English and Literacy						
Comic Club	Tuesday	Lunch	Rm 243	Miss McCallum	All	Come along and read and explore and learn more about Comics
Film Club	Tuesday	Lunch	Drama Studio	S6 Pupils	All	If you have an interest in making and watching films then come along to the Drama Studio to find out more.
English Study/Homework Club	Thursday	After School	Rm 243	English Staff	S3 - S6	An opportunity for students to do homework with access to staff for help.
Sports Clubs						
Basketball	Tuesday	Lunch	Sports Hall	Matthew Parker/Mr Gibbons	S1/S2	For more information please see the PE and Active Schools Notice Boards
Basketball	Monday	Lunch	Sports Hall	Sam Mutch/Miss Craig	S3/S4	
Basketball	Thursday	After School	Sports Hall	Miss Craig	S5/S6	
Football	Monday	After School	Astro Turf	Mr. Lillico	S1/S2	
Football	Thursday	After School	Astro Turf	Mr Mcguigan/ Mr. Letham	S3/S4	
Football (Girls)	Tuesday	After School	Astro Turf	Naimh & Lauren Jackson	S1 - S6	
Netball	Wednesday	Lunch	Sports Hall	Miss Braid/ Mrs Anderson	S1	
Netball	Wednesday	After School	Sports Hall	Miss Braid	S2/S3	
Netball	Tuesday	After School	Sports Hall	Miss Braid	S4-S6	
Gymnastics	Tuesday	After School	Gym	Mrs Anderson	S1 - S6	
Fitness	Mon-Thurs	Lunch	Fitness Suite	Mr Hughes	S1 - S6	
Hockey	Thursday	After School	Hockey Pitch	Rosa Bracken-Ingram/Daisy Singleton	S1 - S3	
Hockey	Thursday	After School	Hockey Pitch	Tom Pendry	S4 - S6	
Cricket	Thursday	Lunch	Rugby Pitch	Mr. Blair	S1 - S6	
Dance	Thursday	After School	Assembly hall	Miss Herd/Mrs Anderson	S1 - S6	
Cross Country Running	Monday	After School	Rugby Pitch	Mrs Christie/Colin Mckie	S1 - S6	
Tennis	Monday	After School	Tennis Courts	Miss Hall	S1 - S6	
Rugby	Tuesday	After School	Rugby Pitch	Mr Hughes	S1/S2	
Rugby	Tuesday	After School	Rugby Pitch	Mr Hughes	S3/S4	



## Frequently Asked Questions

Every year, pupils and parents alike ask very similar questions. Perhaps one of your own questions will also be answered here.

### How will the school contact me with important information?

- A group call system is operated at Waid Academy. Emails are most commonly used for information distribution; therefore please ensure any information you provide us with is accurate and up to date.
- We would also strongly advise all pupils and parents to download the school app, in order to be notified with any news and opportunities.
- The school runs a Twitter page where success stories of our pupils are regularly shared (both academic and extra-curricular). You may wish to follow this if you use Twitter.

### My child will be absent, or has been absent due to illness, how do I notify the school?

- It is important you contact the school as soon as possible if your child will be absent or has been absent for any reason. You can either phone or email the school stating reason absence.

### What if my child is late?

- Even the most punctual people are sometimes late. It is important though, that if your child is late (more than 5 minutes), that they go to the school reception to sign in and collect a late pass. This is to ensure they are registered – they will have already been marked absent by their teacher.
- This applies to all periods, not just Period 1

### My child needs to leave school/class for an appointment, what happens?

- Your child should report to reception on the morning of their planned absence with a note explaining that they have an appointment. The school reception staff will then write them a note which they should hand to their teacher when they need to leave.
- Your child must also sign out at reception on their way out, and then sign in again if they are returning.



- The school reception staff will explain this again to your child if they need to leave school.
- If your child is to be absent only for the morning, they should give the school reception an explanatory note when they first come back to school. They should also sign in.

### How can my child make purchases from the school café?

- Cash purchases can still be made at the school café.
- However, you may wish to add money to your child's YoungScot card so you can keep track of their spending.
- For more information on YoungScot cards (including how to obtain a replacement card, topping up your card, and card benefits) visit [www.young.scot](http://www.young.scot)

### My child received musical tuition at Primary School, how does this work at Waid Academy?

- Most Fife Council musical tuition will continue when your child comes to Waid. Hopefully their instructor will have discussed this on their last lesson.
- If your child is still receiving lessons, they will need to know which day their lesson will be on.
- Lesson times are posted on the noticeboard in the music corridor.
- A member of the music department will tell your child where to go for their lesson. Most lessons take place in one of the music practice rooms.
- If your child's instrument is small, they should store it in their locker. If their instrument is mid-sized, they will be given a larger locker by school staff and should store their instrument there. If their instrument is too large for any personal lockers, cupboards in the music department can be accessed by music pupils in order to store their instruments.
- Of course, though, make sure to bring your instrument home to practice!

### Some pupils have white braid around their blazer, what does this mean?

- Pupils with white braid around their blazers are prefects. These S5 & S6 pupils are here to assist you if you are having any issues – maybe you might be lost.
- Prefects will also help at various events throughout the year (e.g. parents' evenings, charity events, course choice events).



- It is a well-respected achievement to become a Waid Academy prefect.
- Some pupils may also wear purple, green, or gold colours on their sleeve. These bands are for recognition in extra-curricular activities. Purple is for achievements in Expressive Arts; Green for Extraordinary Citizenship; and Gold for Achievement in Sport
- Special ties are also awarded for achievements. If you have competed at regional, national, or international level, you may be awarded a tie for Sport, Expressive Arts, or Academics.
- Colours and ties are presented at Awards Ceremonies and End of Term Assemblies.

### How can I get in touch with a member of staff if I have any concerns?

- Your first port of call should be to phone or email the school. The school office will be able to get you in touch with the relevant member of staff.
- Usually you will speak to your child's guidance teacher, however, it is also possible to get in touch with PTCs and curriculum staff.





## Additional Information

Hopefully you have found this booklet useful. However, if you would like more information, additional sources are available.



Twitter  
@WaidAcademy



Email  
waidacademy.enquiries@fife.gov.uk



School Website  
<https://blogs.glowscotland.org.uk/fi/waidacademy/>



School App  
Search “PSA” or “School App for Parents”  
in the Apple or Android app stores

<p>The Waid Academy St Andrews Road Anstruther Fife KY10 3GY 01334659404</p>	<p><b>Senior Leadership Team</b> Mrs E Smart, Rector  Mrs S Ferguson, Depute Rector S1, S2 &amp; S3  Mr S Duncan, Depute Rector S4, S5 &amp; S6</p>	<p><b>Principal Teachers of Pupil Support</b>  Mrs C O’Donnell Mrs I Henderson Mr D McGuigan Mr I Urquhart</p>
--	---	--

