

# Partnerships with Parents

## Information for Families



# Torryburn Nursery

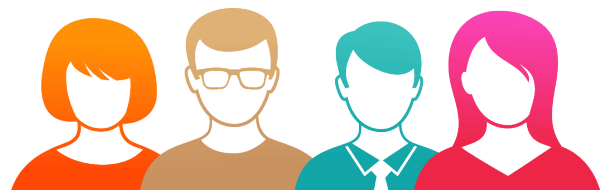
*Growing and Learning Together!*

Parents are children's first and most important educators, and they continue to play a major role in their child's learning when they enter the early years setting.

When staff and parents work together to support children's learning it can have significant positive effects on the way in which children value themselves and those around them.

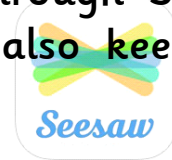
Parental Partnership is about:

- Promoting close links between staff and parent/carers.
- Exchanging and recording information relevant to children's development, progress and learning.
- Respecting each other's role in educating and caring for the child.
- Informing parents/carers about aims, policies, procedures and curriculum.
- Informing and supporting parents when dealing with outside agencies or transition to school.
- Dealing promptly and efficiently with enquiries, concerns or complaints.
- Making parents/carers feel welcome and valued.



Throughout the year there are many opportunities for you to become involved and support the work of the nursery:

- Previously informal get togethers were held throughout the year to discuss your child's learning and development. These were carried out in our 'Parent Zone' where you would find a copy of all our policies and procedures. Under current circumstances, our parent discussions take place in the Nursery garden. Information is also shared with you through Seesaw which is a mobile app where we will also keep you updated with your child's learning.



- Parent leaflets addressing a wide variety of different topics and issues are available on the school website. These leaflets inform and support parents in working with their children.
- Regular newsletters keep parents informed about important dates, forthcoming events and any new developments in nursery. Other information is regularly updated on Seesaw.
- Parents/carers are invited to interact with our virtual Bookbug sessions and PEEP sessions throughout the year. Under normal circumstances, these sessions would be carried out within nursery which parents would be invited to attend.
- Every nursery child has their own Personal Learning Journey (PLJ). Under these circumstances your child's PLJ cannot be sent home but we encourage you to



share their home learning with us on Seesaw. Key Workers use the PLJ to share targets with parents which will also be posted through Seesaw.

- Providing us with feedback about our service by completing virtual questionnaires throughout the year.
- Providing us with your views on what we need to improve in the nursery, which contribute to our Nursery Improvement Plan.

The contribution of parents to the nursery, in whatever capacity, is extremely valuable.

Please let nursery staff know if you have any special talents, skills or interests you could offer! We love learning new things in nursery! You are welcome to share them with us through Seesaw.

The nursery usually have 'Stay and Play' sessions when you, or other family members can come along and join your child in nursery during a session. Hopefully this will be able to continue in the near future!

The children love participating in a range of activities, such as:

- Board games
- Reading stories
- Painting and gluing
- Writing and drawing
- Planting in the community garden
- Sharing/teaching a skill



You can get involved in this learning by sharing similar experiences at home.