

Thornton Primary School & ELC



Website: <https://blogs.glowscotland.org.uk/fi/thorntonps/>

Headteacher: Mrs Emily Tall



Site Traffic Management Plan

May 2024

(Next review date May 2025)



Contents

Section

1. Introduction
2. Layout / Access
3. Pedestrians
4. Pupils
5. Staff
6. Visitors
7. Cyclists
8. Servicing / Deliveries
9. Contract Hire Services
10. Disabled Access
11. Out with the School Grounds
12. Management Practices

1. Introduction

This document has been prepared to inform and instruct employees, pupils, parents and others who come onto the site, including visitors (both pedestrians and people in vehicles), about the site rules concerning pedestrian and vehicle separation.

Thornton Primary School & ELC takes the health and safety of all site users very seriously. It is therefore, imperative that individuals take care, exercise caution when in the school grounds or within the vicinity of the school grounds and follow instructions to avoid risk of injury. If there are any concerns about traffic safety, they should be reported to any member of the school's Senior Leadership Team.

We urge all site users to read this document carefully and act in accordance with the instructions contained therein. The instructions constitute site rules. Pupils in breach of the site rules may be subject to the school's behaviour management policy.

Thornton Primary School & ELC is situated on a site with several areas which need to be given consideration for the site to operate safely.

Copies of this document will be made available to school staff, pupils, parents and carers. This document is available on the school website:

<https://blogs.glowscotland.org.uk/fi/thorntonps/>

The document will be reviewed annually and awareness raised regularly through parental events, pupil sub-groups, assemblies and school meetings.

For further information, please contact:

Julie Paisley, Business Manager on 03451 55 55 55 + ext. 473996 or julie.paisley@fife.gov.uk

Emily Tall, Headteacher on 03451 55 55 55 + ext. 445129 or Emily.tall@fife.gov.uk

2. School Layout / Access

Staff Car Park Entrance

Pedestrian Entrance



Pedestrian Entrance to school & ELC

Delivery Entrance

Side street with parking area (not for school)

3. Pedestrians

There is a pavement around the perimeter of the school and pedestrians should make sure that they use this safely and avoid spilling onto the road. Pupils walking in groups should take this into account and allow other users to pass safely.

Pedestrians should only access the school from the designated entry points. Pedestrians need to recognise that these may be adjacent to vehicular access points that will be in use during peak times and should exercise caution.

Designated Entry Points

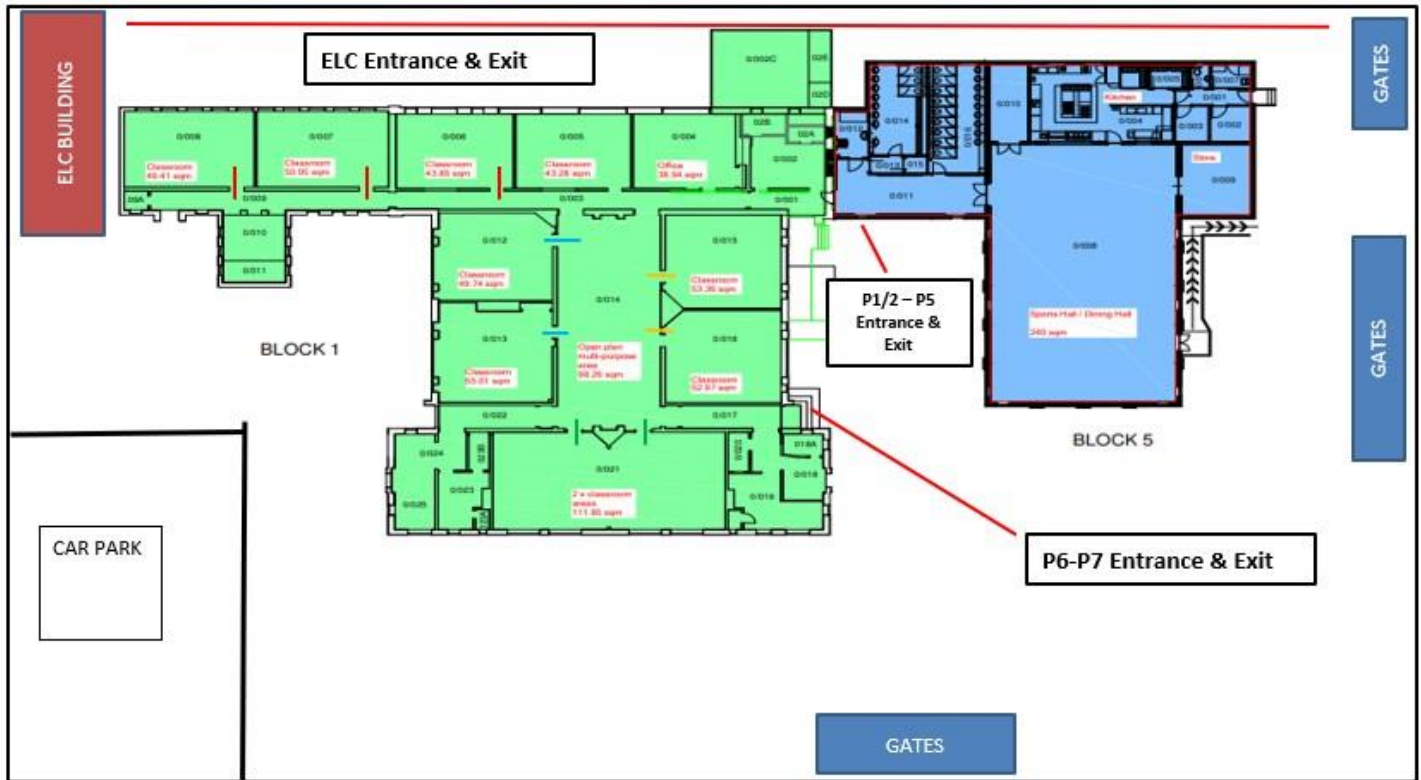
Pedestrians should follow the local footpaths to [Station Road](#) where there is a pedestrian entry point located at the front of the school. There are two further entry points on [Station Road side street leading to the Thornton Football Club Car Park](#). One side gate and a Top Gate after the access point to the car park. The vehicular access should not be used by pedestrians. At certain points it is necessary for pedestrians to cross the main access road using the traffic calming area, therefore caution is needed by both pedestrians and drivers.

4. Pupils

It is very important that pupils set a good example to others, particularly in the spirit of being a safe school. There are a number of site related areas pupils should be aware of:

- Pupils should be particularly aware that **entry into the school ground via vehicular access points (staff car park and the service area) is strictly forbidden.** Whilst this may seem a quick way into the school, it is a breach of the site rules and compromises personal safety and the safety of others.
- Pupils found to be climbing over fences, railings or walls, not following staff instructions in relation to the site, or not adhering to the contents of this plan will be in breach of the site rules and may be subject to the school's behaviour management policy.
- Pupils must not walk in the [staff car park or play on the side street off Station Road](#) at any time.
- When using the footpaths – walk! This will avoid accidents and will make you more aware of what is happening around you.

ENTRANCES & EXITS



5. Staff

The car park is located next to the school grounds and this is strictly for use by visitors and school staff. Drivers should proceed slowly within the car park at all times. Please bear in mind that some children and some pupils with additional support needs may have little or no awareness of road safety and you should take account of this when driving into and out of the car park.

Staff are expected to act responsibly on the site when parking and accessing the school building. If you are aware of unauthorised use of parking bays, this should be reported via the school receptionist or to a member of the Senior Leadership Team who will inform/remind the offending driver of the correct use of the site. It would be helpful if staff could supply the school with your registration number so that you can be contacted if there is a need to do so (eg. if car lights are left on).

The main staff car park is situated separately from the school playground with access to the side of the school building. Please use the dedicated parking bays (not currently marked). When entering/leaving the car park, drivers should be aware that pedestrians may be crossing the car park access road.

A disabled car parking space nearest to the main school entrance is at the car park on the side street of Station Road and is limited to short-term visitors only and has designated disabled parking bays for disabled blue badge holders only. These bays have been adopted and are subject to penalty charge notices for anyone parking without a blue badge.

6. Visitors

Visitors are welcome to park in the car park on the side street of Station Road, next to the Thornton Football Club building but should only park in designated spaces. Doing so will allow unrestricted movement of other vehicles during the school day or at peak times. Designated disabled parking bays are restricted to disabled badge holders only.

Parking is not permitted on the yellow markings or large pavement area outside the school at any time, even for the shortest of visits.

On street parking is strictly limited in the surrounding area, but if you are unfamiliar with the area, please make sure that you do not block residential driveways or park where this could cause obstruction.

Access into the school is only permitted from the main entrance on [Station Road](#). All visitors must report to reception and sign in before going anywhere in the school. Visitors are required to leave a note of their registration number with staff. On departure, visitors should sign out at reception and leave the building by the main entrance door.

Disabled visitors are recommended to use the car park nearest to the main school entrance at the car park on the side street of Station Road, next to the Thornton Football club building.

If visitors need any advice on access or parking before their visit, please call the school reception on [01592 583465](tel:01592583465).

7. Cyclists

[Cycle stands are available for use by pupils, staff and visitors](#). Anyone choosing to cycle should ensure they do so in a safe manner for both themselves as cyclists and pedestrians who will be using the shared 3m wide paths which have been designed for dual use. These paths join the grounds from [Main Street](#) as part of the wider community cycle network. It would be good practice when entering the school site, in particular at busy times to dismount from your bike and wheel it to the cycle racks.

8. Servicing / Deliveries

Drivers of service vehicles (if they have not been on the site before or obtained instruction in advance) should report to the reception desk / janitors office in the main building to advise the nature of their visit and get clarification on where they can park. Drivers may be issued with a copy of this plan for reference or simply be advised of the site rules in relation to the area they are parking at the time.

Where the contractor is on site to carry out works by prior arrangement, please call the school reception on [01592 583465](tel:01592583465) in advance to agree the most suitable parking location.

Service Area

The area that provides access to the kitchen, meals on wheels and refuse collection is designated for service vehicles only. There is clear signage in the area to identify this. No deliveries to the school will be made during the following times:-

[8.30 am to 9.10 am](#)

[10.30 am to 11.00 am](#)

[12.55 pm to 2.15 pm](#)

[3.25 pm to 4.00 pm](#)

Drivers should be aware that they are working within a school environment – exercise extreme caution and be vigilant when carrying out vehicle manoeuvres in any part of the school grounds.

9. Contract Hire Services

Contracted vehicle drivers (including taxis and minibuses) will have specific instructions given to them through Transportation & Environmental Services as part of the terms of the contract. However there are some specific comments to make in relation to the site at [Thornton Primary School & ELC](#).

Minibus and Taxis for mainstream pupils

These vehicles must use the visitor car park located on the side street of Station Road to the right of the school building.

Minibus and Taxis for ASN pupils

The accessible vehicles (those who use a tailgate to pick up / drop off wheelchair users and require 3 meters clearance at the rear for wheelchairs) or larger vehicles by prior arrangement are permitted to use the visitors / disabled car park between 8.20am and 9.00am and 3.20pm – 4.00pm.

- Drivers should reverse vehicles into place, making sure that it is safe to do so first.
- In the morning, pupils should only be permitted to leave the vehicle, if there are appropriate staff in place to accompany them immediately into the school building.
- At pick up in the afternoon, pupils must wait on the paved area in front of the visitors car park next to the main school entrance until the vehicle they are to enter is in situ and ready for them.
- When vehicles are ready to leave the site, they should not do so unless there are no pupils or staff in the vicinity and it is safe to move off.
- There should be no parental collection/drop off without permission and pavement parking, parking on the grass verges and out of bay parking is strictly forbidden.

10. Disabled Access

Pedestrian access is primarily via the main front entrance for visitors. There is a ramp at the front of the school to ensure ease of access to the building. The ELC building has clear access for all.

Parking

There are several disabled bays in the car park at the Thornton Football Club car park on the side street of Station Road and are clearly marked out on the road surface. Access to the disabled parking bays can be found by entering the grounds via the vehicular access and taking a right turn into the parking area.

If visitors, staff or pupils require information on access or any other considerations, they should contact the school reception in the first instance on [01592 583465](tel:01592583465)

11. Outwith the School Grounds

The school accepts that parking near the school is not easy. [Station Road](#) is a residential traffic route, used by car traffic as well as large delivery and heavy goods vehicles into and out of the surrounding area. It is important that the school is a good neighbour to local residents. [Station Road](#) is a main thoroughfare and in constant use during the day. Parents/Carers are encouraged not to park near the school and allow their children to walk the remaining distance if they drop them off further away. There are a number of access points to the site within residential streets and we would ask that you respect the people who live in these areas by not using them as drop off / pick up points.

Parking indiscriminately, such as mounting pavements, double parking, stopping on any red / yellow lines, obstructing access points to streets and driveways and parking near junctions causes danger to pupils and other road users. Accidents can arise if views are obstructed or pedestrians have to negotiate between parked vehicles. In addition, the roads can become congested which results in frustration and delays to services and ongoing journeys.

Please act responsibly by parking as far away from the school as possible to keep the pupils at [Thornton Primary School & ELC](#), local residents and other road users safe.

12. Management Practices

Key to the ongoing monitoring of the plan is the role of school managers and other staff. All staff have a responsibility to make sure that they are acting in such a way as to not compromise the health and safety of themselves or others.

Supervision

The Senior Leadership Team will, where possible, be within the playground on the bell at the beginning and at the end of the school day.

Monitoring of compliance against this plan

In addition to the supervision arrangements in place, the Senior Leadership Team will carry out weekly site inspections to view practices. These inspections will be recorded on the '**weekly site monitoring form**' (see appendix A). These records will be retained for 6 months.

Where issues arise with vehicular access, taxi/minibus drivers and staffing, these will be dealt with or escalated by the school Business Manager. The Senior Leadership Team will be responsible for addressing the conduct of all pupils where this is not consistent with the requirements and expectations of this plan.

Non-compliance

If there are concerns or incidents that constitute non-compliance these will be recorded on the form by those monitoring the site and appropriate action will be taken. This includes possible disciplinary action and reports going to Contractor or Service management which may result in investigative action. On days where there is no monitoring carried out and there is an instance of non compliance, these should be escalated immediately to the Senior Leadership Team who will make a record on the form and take appropriate action.