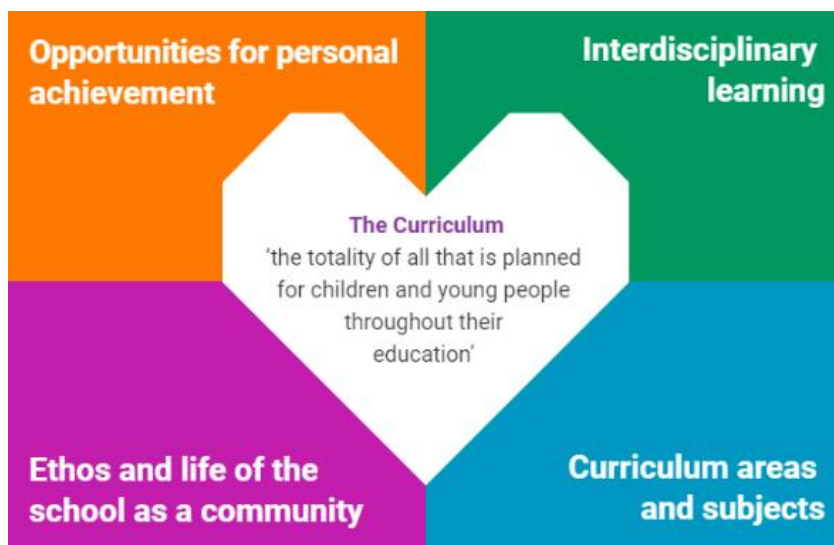


4 Contexts for Learning Overview



August to October 2024 - Primary 6/7

Opportunities for Personal Achievements

Outdoor Learning:	Natural Connections P1-4 – Bronze Foundation Natural Connections P5-7 – Bronze Level 1
TRACK Certificates	Every week we focus and reflect on how our school vision and values can support us in becoming stronger learners.
MAD groups:	Through our Making A Difference (MAD) groups and class interdisciplinary learning children are developing skills in team work, decision making, communication, compromising and leadership. The first MAD group meets on: Monday 16 th September. All MAD groups have been given a mission to work on the Global Goals click here for more information.

Please email me/send me a message on Teams or via email with any news and a photo of **personal achievements out with school**: gw23harrisonemily@glow.sch.uk so this can be shared with the class and school.

Ethos and Life of the School as a Community

We are a rights aware school – our Class Charters show our commitment to children's rights. You will see these at **P1-7 Meet the Teacher** – Wednesday 4th September – 3:15 – 4:15 pm. This is a drop-in session where classroom learning, any questions and homework will be explained.

We celebrate diversity – **European Languages Day** Celebration – we encourage all our bi-lingual children to share their mother tongue with us – **26th September**.

We are all making crafts for the Parent Council Summer Fair on – Friday 20th September – **doors open 6pm** – at Tayport Primary School. The funds raised will fund our buses to the panto in St Andrews.

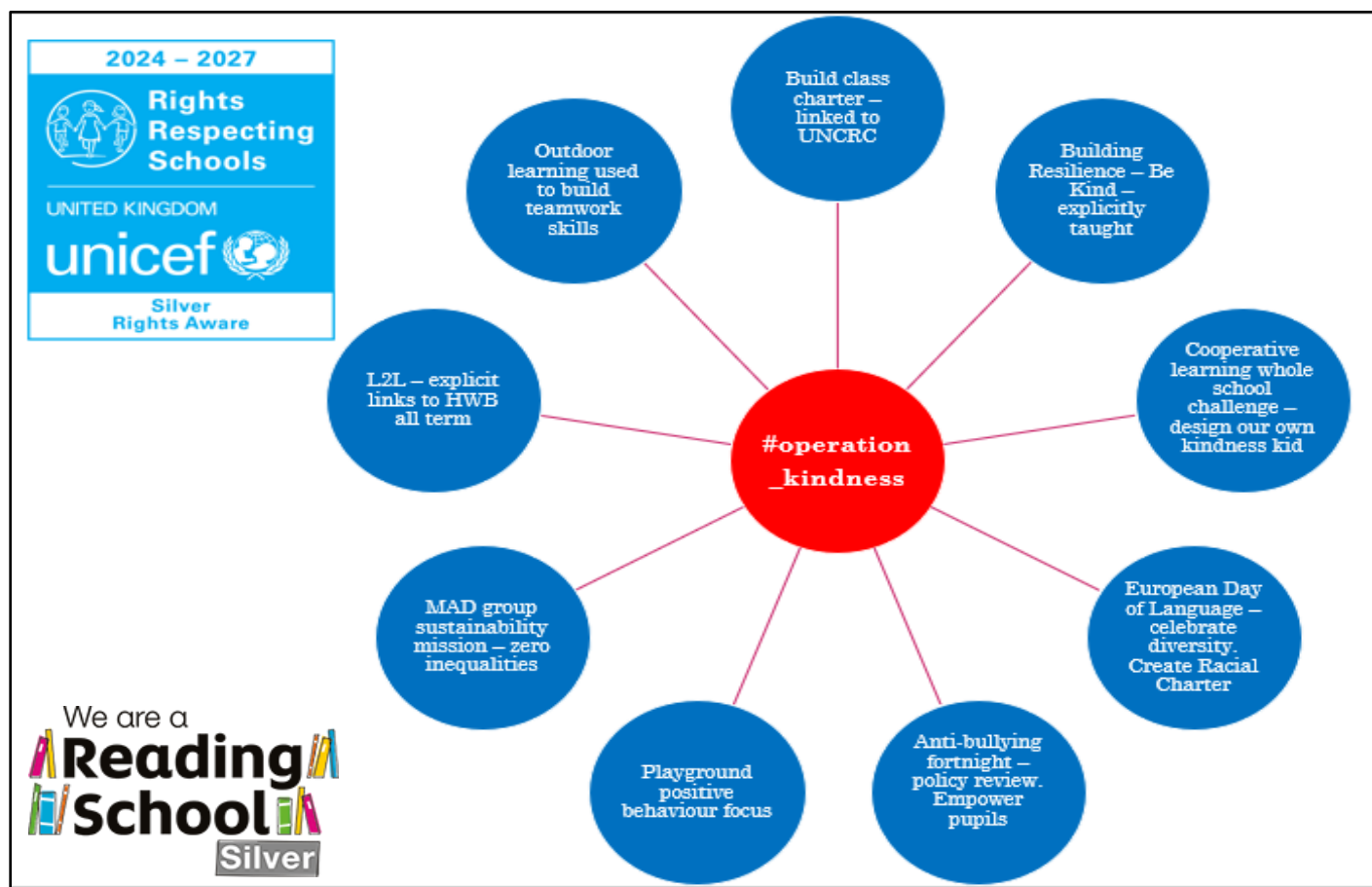
We will be sharing and living the #operation_kindness messages during our anti-bullying fortnight – 9-20th September.

We will be able to show how our MAD group work can make a difference to our school and Tayport community.

We are a reading school and have planned visits to Tayport Community **Library** early this term. **Reading Café 1 will be hosted by the Learning Leaders and Reading Council on** Tuesday 1st October – 9:30 – 10:15 am. Invitations will follow.

Interdisciplinary Learning (IDL)

Whole school theme: We are all on TRACK to a bright future #operation_kindness



Curriculum Areas and Subjects:

Reading	<ul style="list-style-type: none"> I can infer messages, moods, feelings and attitudes across a text. I can recognise which character the writer wants the reader to like/ dislike and how this has been achieved.
Writing	<ul style="list-style-type: none"> I can attempt to use figurative language, for example, simile, metaphor, alliteration and onomatopoeia. I check and edit my work for meaning, punctuation and spelling and to ensure it meets its purpose.
Listening & talking	<ul style="list-style-type: none"> I respond appropriately according to my role when engaging with others. I can disagree with others in respectful way and can justify my thoughts.
French (L2)	<ul style="list-style-type: none"> I can consolidate and extend my knowledge of words and phrases including greetings, numbers, calendar vocabulary and classroom instructions.
Number, money & measure	<p><u>Place Value:</u></p> <ul style="list-style-type: none"> I can explain the link between a digit, its place and its value for whole numbers to 1 000 000 and up to three decimal places. I can partition numbers, including decimals, in different ways. (standard and non-standard partitioning)

	<p><u>Estimation & Rounding:</u></p> <ul style="list-style-type: none"> I can round decimal fractions to the nearest whole number to one decimal place and two decimal places. <p><u>Adding & Subtracting:</u></p> <ul style="list-style-type: none"> I can use links between add and subtract to change a problem so that it can be solved on a calculator. I can choose the most efficient strategy for my calculation of whole numbers and decimal fractions.
Shape, position & movement	N/A
Information handling	N/A
Health and Wellbeing: The 7 wellbeing indicators – Safe, Healthy, Achieving, Nurtured, Active, Respected, Responsible and Included (SHANARRI) are covered throughout the year. We support this learning at Tayport Primary through:	
Building Resilience – Unit 10 - Be kind to others	<p><u>Key learning in this unit:</u></p> <ul style="list-style-type: none"> Kindness makes a difference to us and others. Being unkind hurts others, and it hurts us too. It is important to be kind to yourself.
Physical Education:	<p>PE Skills we are developing: Basketball & Hockey</p> <ul style="list-style-type: none"> Developing our accuracy, teamwork, pace and agility through basketball. We are developing our hand-eye coordination and accuracy skills through hockey. <p>Our gym days this term are: Monday & Wednesday Please come to school wearing plain gym kit – black or grey tracksuit bottoms or shorts, a plain white t-shirt and school jumper and no cropped tops/vests.</p>
All other health and wellbeing work:	All #operation_kindness learning, Anti-bullying fortnight, European Day of Language celebration
Expressive Arts	Shape/Space and Tone focus – I can compose a picture by considering the foreground, background and middle ground. We will learn how to make light and dark tones using media.
Science	N/A
Social Studies	I can research and present my findings on a historical figure who helped to shape society today.
Technologies	I can refine/use advanced search tools to find credible/plausible/reliable information for a given task.
Religious & Moral Education	N/A
Supporting learning at home:	
<p>Homework is issued on a Monday. It should be returned on Thursday morning.</p> <p><u>Format of homework:</u></p> <p>Reading & Spelling homework will take the form of a homework grid. Children are to choose one activity from each every week.</p> <p>Maths homework will be provided on a worksheet that will be glued into homework jotters in connection to what we are currently learning.</p> <p>If you wish to support your learner at home below are some excellent websites:</p> <ul style="list-style-type: none"> Reading Eggs https://readingeggs.co.uk/ Topmarks https://www.topmarks.co.uk/ Sumdog https://play.sumdog.com/domain_choice Encourage reading, watching and listening to a range of genres / visit library Read for pleasure as often as possible- Oxford Owls, Epic Talk about what being resilient means to your family. Why is it important? Encourage independent use of Glow and Teams <p>Refer to our school website for lots of useful information as well as our weekly updates: click here.</p>	