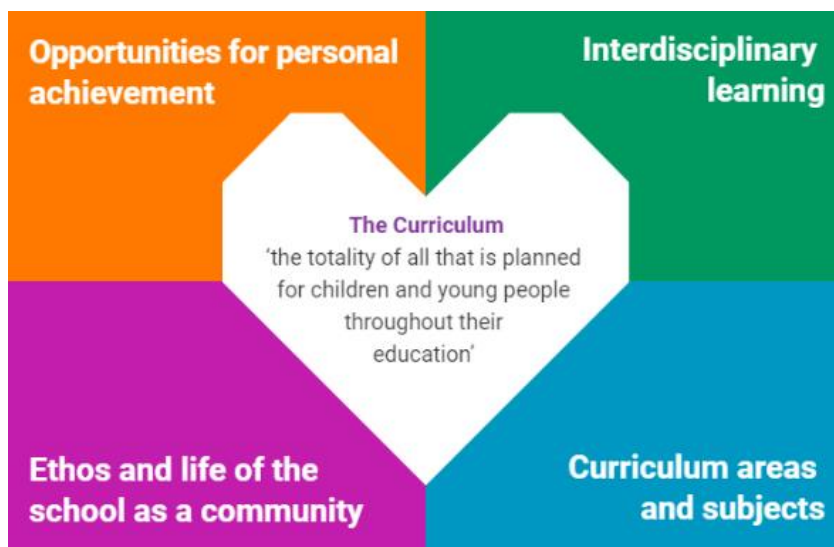


## 4 Contexts for Learning Overview



### August to October 2024 - Primary 7

#### Opportunities for Personal Achievements

<b>Outdoor Learning:</b>	Natural Connections P1-4 – Bronze Foundation Natural Connections P5-7 – Bronze Level 1
<b>TRACK Certificates</b>	Every week we focus and reflect on how our school vision and values can support us in becoming stronger learners.
<b>MAD groups:</b>	Through our Making A Difference (MAD) groups and class interdisciplinary learning children are developing skills in team work, decision making, communication, compromising and leadership. The first MAD group meets on: Monday 16 <sup>th</sup> September. All MAD groups have been given a mission to work on the Global Goals <a href="#">click here for more information.</a>

Please email me/send me a message on Teams or via email with any news and a photo of **personal achievements out with school**: [gw19deacongabija@glow.sch.uk](mailto:gw19deacongabija@glow.sch.uk) so this can be shared with the class and school.

#### Ethos and Life of the School as a Community

**We are a rights aware school** – our Class Charters show our commitment to children's rights. You will see these at **P1-7 Meet the Teacher** – Wednesday 4<sup>th</sup> September – 3:15 – 4:15 pm. This is a drop-in session where classroom learning, any questions and homework will be explained.

We celebrate diversity – **European Languages Day** Celebration – we encourage all our bi-lingual children to share their mother tongue with us – **26<sup>th</sup> September**.

**We are all making crafts for the Parent Council Summer Fair on** – Friday 20<sup>th</sup> September – doors open 6pm – at Tayport Primary School. The funds raised will fund our buses to the panto in St Andrews.

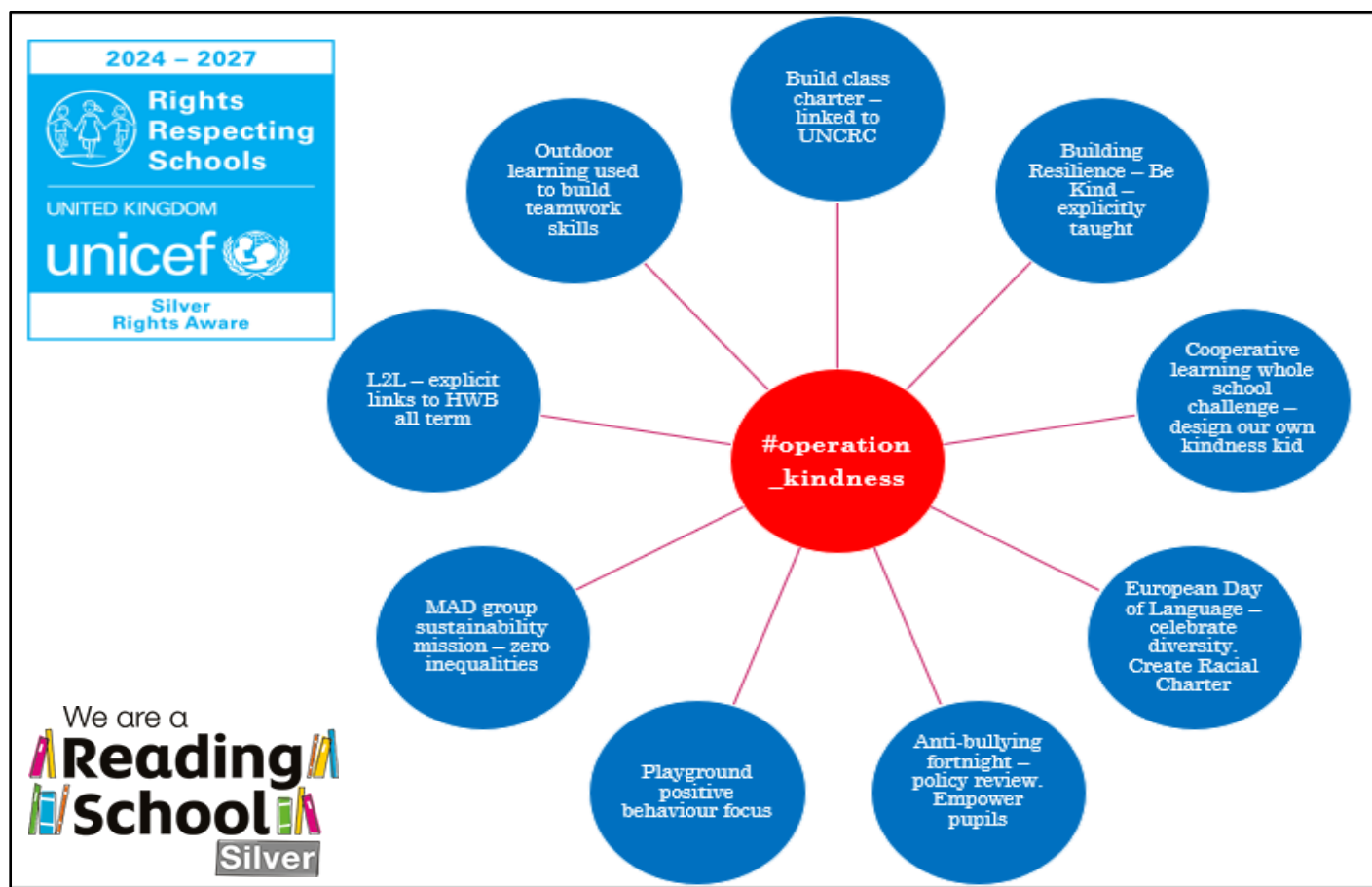
**We will be sharing and living the #operation\_kindness messages during our anti-bullying fortnight** – 9-20th September.

We will be able to show how our MAD group work can make a difference to our school and Tayport community.

**We are a reading school and** have planned visits to Tayport Community **Library** early this term. **Reading Café 1 will be hosted by the Learning Leaders and Reading Council on Tuesday 1<sup>st</sup> October** – 9:30 – 10:15 am. Invitations will follow.

## Interdisciplinary Learning (IDL)

**Whole school theme: We are all on TRACK to a bright future #operation\_kindness**



### Curriculum Areas and Subjects:

<b>Reading</b>	<ul style="list-style-type: none"> <li>I can infer messages, moods, feelings and attitudes across a text.</li> <li>I can recognise which character the writer wants the reader to like/ dislike and how this has been achieved.</li> </ul>
<b>Writing</b>	<ul style="list-style-type: none"> <li>I can attempt to use figurative language, for example, simile, metaphor, alliteration and onomatopoeia.</li> <li>I check and edit my work for meaning, punctuation and spelling and to ensure it meets its purpose.</li> </ul>
<b>Listening &amp; talking</b>	<ul style="list-style-type: none"> <li>I respond appropriately according to my role when engaging with others.</li> <li>I can disagree with others in respectful way and can justify my thoughts.</li> </ul>
<b>French (L2)</b>	<ul style="list-style-type: none"> <li>I can extend my knowledge of words and phrases including greetings, numbers, calendar vocabulary and classroom instructions.</li> </ul>
<b>Number, money &amp; measure</b>	<p><u>Place Value:</u></p> <ul style="list-style-type: none"> <li>I can explain the link between a digit, its place and its value for whole numbers to 1 000 000 and up to three decimal places.</li> <li>I can partition numbers, including decimals, in different ways. (standard and non-standard partitioning)</li> </ul>

	<p><u>Estimation &amp; Rounding:</u></p> <ul style="list-style-type: none"> <li>I can round decimal fractions to the nearest whole number to one decimal place and two decimal places.</li> </ul> <p><u>Adding &amp; Subtracting:</u></p> <ul style="list-style-type: none"> <li>I can use links between add and subtract to change a problem so that it can be solved on a calculator.</li> <li>I can choose the most efficient strategy for my calculation of whole numbers and decimal fractions.</li> </ul>
<b>Shape, position &amp; movement</b>	N/A
<b>Information handling</b>	N/A
<b>Health and Wellbeing:</b> The 7 wellbeing indicators – <b>Safe, Healthy, Achieving, Nurtured, Active, Respected, Responsible and Included (SHANARRI)</b> are covered throughout the year. We support this learning at Tayport Primary through:	
<b>Building Resilience – Unit 10 - Be kind to others</b>	<p><u>Key learning in this unit:</u></p> <ul style="list-style-type: none"> <li>Kindness makes a difference to us and others.</li> <li>Being unkind hurts others, and it hurts us too.</li> <li>It is important to be kind to yourself.</li> </ul>
<b>Physical Education:</b>	<p>PE Skills we are developing: I can develop my accuracy, pace and agility in basketball.</p> <p>I can develop my team working skills and skills in hockey - dribbling, passing, stopping the ball.</p> <p>Our gym days this term are: <u>Monday and Tuesday.</u></p> <p>Please come to school wearing <b>plain gym kit</b> – black or grey tracksuit bottoms or shorts, a plain white t-shirt and school jumper and no cropped tops/vests.</p>
<b>All other health and wellbeing work:</b>	All #operation_kindness learning, Anti-bullying fortnight, European Day of Language celebration
<b>Expressive Arts</b>	Shape/Space and Tone focus – I can learn how to compose a picture by considering the foreground, background and middle ground. We will learn how to make light and dark tones using different media.
<b>Science</b>	N/A
<b>Social Studies</b>	I can research and present my findings on a historical figure who helped to shape the society today.
<b>Technologies</b>	I can refine/use advanced search tools to find credible/plausible/reliable information for a given task
<b>Religious &amp; Moral Education</b>	N/A
<b>Supporting learning at home:</b>	
<p>Homework is issued on a Monday. It should be returned on Thursday morning. <u>Format of homework:</u> all the homework is on Glow. Find all the log in details in homework jotters. <b>Reading &amp; Spelling</b> homework will take the form of a homework grid. Children are to choose one activity from each, every week. <b>Maths</b> – Three worksheet options, Mild, hot and spicy – choose ONE you think you would manage.</p> <p>If you wish to support your learner at home below are some excellent websites:</p> <ul style="list-style-type: none"> <li>Reading Eggs <a href="https://readingeggs.co.uk/">https://readingeggs.co.uk/</a></li> <li>Topmarks <a href="https://www.topmarks.co.uk/">https://www.topmarks.co.uk/</a></li> <li>Sumdog <a href="https://play.sumdog.com/domain_choice">https://play.sumdog.com/domain_choice</a></li> <li>Encourage reading, watching and listening to a range of genres / visit library</li> <li>Read for pleasure as often as possible- Oxford Owls, Epic</li> <li>Talk about what being resilient means to your family. Why is it important?</li> <li>Encourage independent use of Glow and Teams</li> </ul>	
Refer to our school website for lots of useful information as well as our weekly updates: <a href="#">click here.</a>	