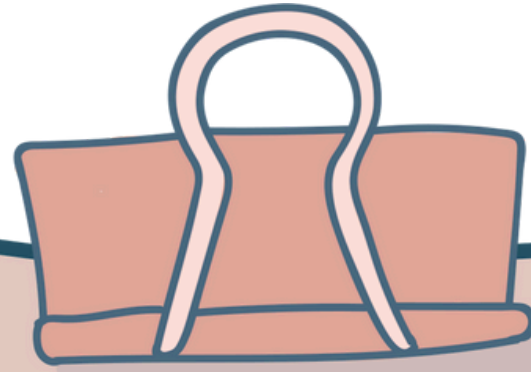


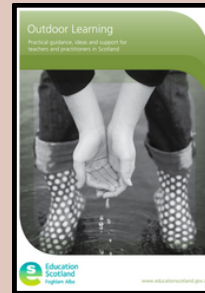
Fife Outdoor Learning Toolkit - Advice and Guidance



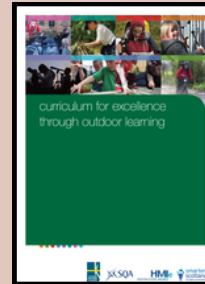
Access to Outdoor Spaces

The Outdoor Learning Practical guidance, ideas and support for teachers and practitioners in Scotland provides key considerations for places to learn outdoors including:

- Section 4: school and centre grounds (p61-72)
- Section 5: using the local area and community including day visits by foot or using transport (p73-80)
- Section 6: outdoor residential experiences (p81-88)
- Section 7: going abroad (p89-92)



Curriculum for Excellence through outdoor learning (p17) provides a set of questions which may help with decisions on the best places to learn outdoors.



When enjoying the outdoors, we must follow the Scottish Outdoor Access Code which is based on 3 key principles:

- Respect the interests of others.
- Care for the environment.
- Take responsibility for our own actions.

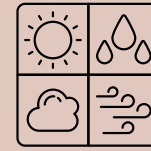
Key Considerations:



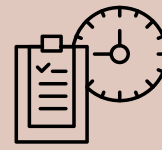
Clothing



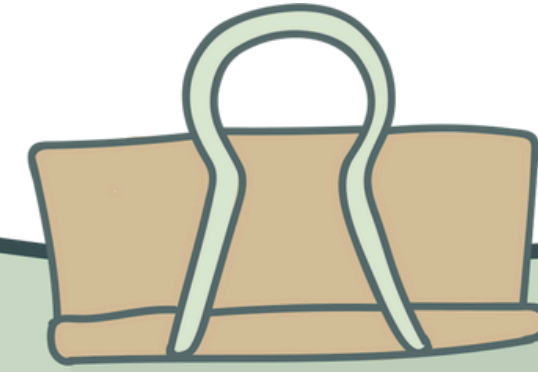
Resources



Weather



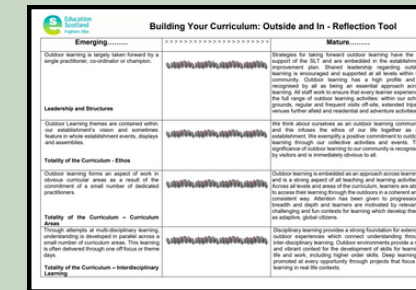
Timing



Improving Outdoor Learning

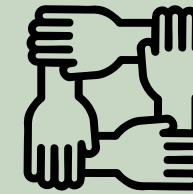
Schools need to take a strategic approach to developing outdoor learning. Do all children and young people have the chance to learn, explore and develop a range of progressive skills outdoors throughout the year?

Access Building your Curriculum: Outside and In, and accompanying Reflection Tool to support discussions around improving outdoor learning.



Partners

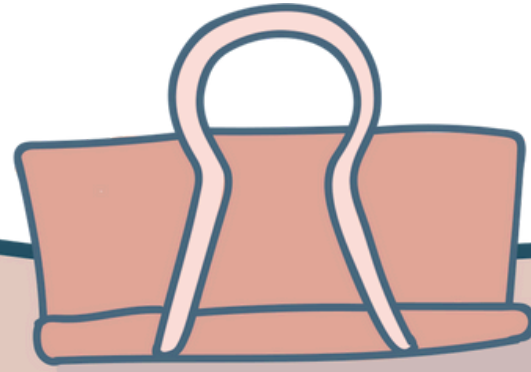
There are many different partners who can support outdoor learning including parents, carers, families, local community, Council teams and organisations such as Outdoor Education Fife etc.



Further Advice and Guidance

<https://education.gov.scot/resources/learning-for-sustainability-advice-and-guidance/outdoor-learning/>

Fife Outdoor Learning Toolkit - Health and Safety



Risk Assessments

We have a duty to effectively manage risks. This is important in the wider context of risk management, but it's particularly important in relation to the health and safety of children and young people, staff and anyone involved in school activities on school premises or beyond.

- You must carry out risk assessments to identify the main risks of any activity, and how best to mitigate them.
- This is just as important for day-to-day activities and lessons as it is for more unusual activities, like serving food at a school fayre or taking pupils out on adventurous activities.
- Each situation is different. It's not enough to download and date documents.

More information on risk assessments can be found [here](#).

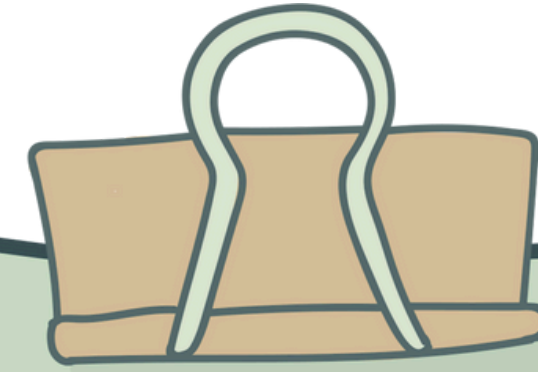


EVOLVE

Evolve is Fife's risk assessment online documentation. This supports all outdoor excursions and ensures the safety of children and young people, teachers and adults. You will require a username and password from your line manager to access Evolve. Guidance Sway available [here](#).



Going Out There
Scottish Framework
for Safe Practice in
Off-site Visits

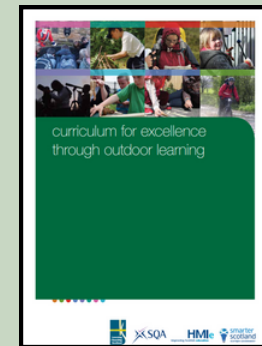


Health and Safety Considerations

Taking children and young people outdoors can be daunting. There is extensive support available to make this process seamless and rewarding.

Curriculum for Excellence through outdoor learning documentation provides information, guidance and support for teaching and learning in the outdoor environment.

<https://education.gov.scot/media/isxg4lb0/cfe-through-outdoor-learning.pdf>



Equality, Diversity and Inclusion

Learning in and about the outdoors is for everyone. As with the classroom it is our responsibility and part of Fife's educational policy to create an inclusive and equitable education system.

The Institute of Outdoor Learning provides guidance on how to support everyone outdoors.



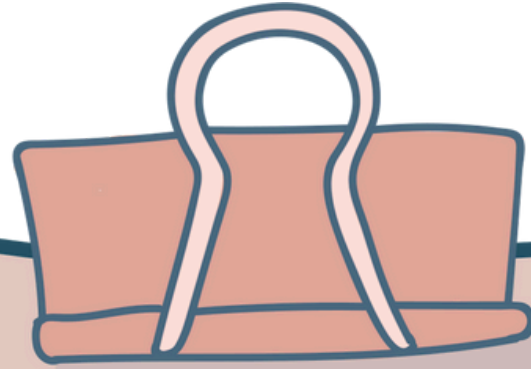
Further Support



Learning through Landscapes provide detailed support on how to safely take children out of school to learn.

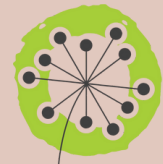


Fife Outdoor Learning Toolkit - Additional Resources and Links



Resources and Ideas

There is an array of excellent websites which provide lesson ideas and resources to support outdoor learning across different settings.



[Learning through Landscapes](#)

Learning through Landscapes



[Creative Star](#)



[Outdoor Classroom Day](#)



[NatureScot](#)



[Nature Discovery Map Scotland](#)

Professional Learning and Further Reading

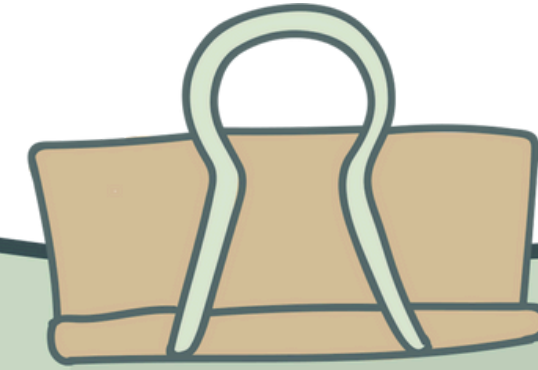


[High Quality Outdoor Learning 2025](#)



[Outdoor Learning Directory](#)

[SAPOE](#)



Programmes, Awards and Qualifications

There are a growing number of local and national outdoor learning linked programmes, awards and qualifications.



[Natural Connections](#)



[Climate Action Schools](#)



[Scottish Wildlife Trust](#)

Fife Outdoor Learning Supporters and Sites



[Fife Coast and Countryside Trust](#)

[Climate Action Fife](#)

[RHET Fife](#)

[Outdoor Education Fife](#)

[Lochore Meadows](#)

[Fordell Firs](#)

[The Ecology Centre](#)

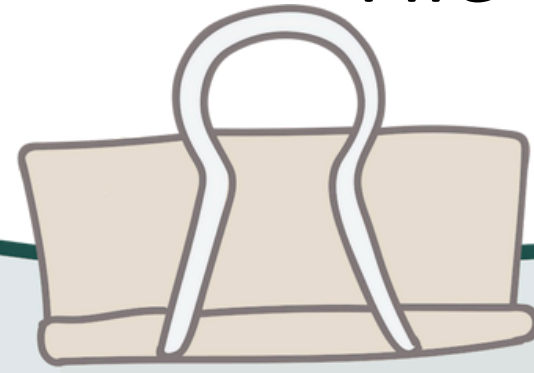
[Tentsmuir Forest](#)

[Fife Beaches](#)

[St Andrews Botanic Garden](#)

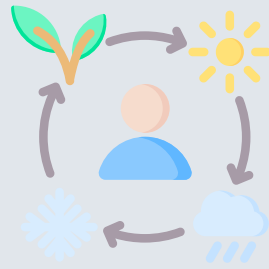


Fife Outdoor Learning Toolkit - Glossary



Adaptation

The process of adjusting to new conditions or environments in order to survive or thrive. In the context of nature, it refers to how organisms or systems modify to better suit their surroundings, like how species evolve traits to survive in changing climates.



Adventuring

Developing new skills and working to improve them, challenging ourselves, finding out what we can do, getting new perspectives and feeling the thrill of success.



Biodiversity

The variety and variability of life on Earth, including different species, ecosystems, and genetic variations. A high level of biodiversity is crucial for ecosystem health and resilience.



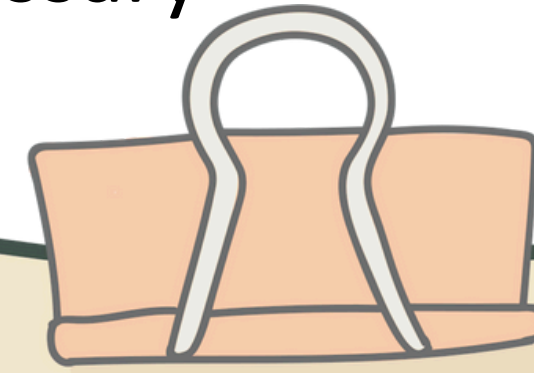
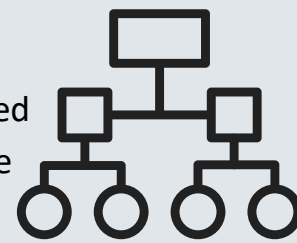
Carbon Footprint

The total amount of greenhouse gases emitted into the atmosphere as a result of human activities, typically measured in equivalent tons of carbon dioxide (CO₂). It includes emissions from transportation, energy use, and food production.



Classifies

The act of organising or grouping things based on shared characteristics. In biological classification, organisms are grouped into categories like species, genus, and family.



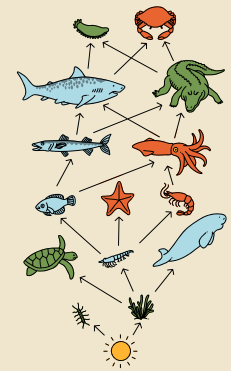
Climate Change

Long-term changes in temperature, precipitation, and other atmospheric conditions on Earth, primarily due to human activities such as burning fossil fuels, deforestation, and industrial processes. It leads to global warming, extreme weather events, and rising sea levels.



Ecosystem

A community of living organisms interacting with each other and their shared physical environment (such as air, water, and soil). Ecosystems can vary in size, from small ponds to large forests or oceans.



Environment

The surrounding conditions, influences, and elements that affect an organism or system. It includes natural elements like air, water, and land, as well as human-made features like buildings and infrastructure.



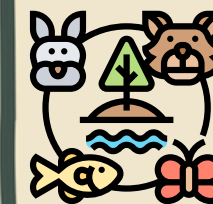
Hazard Awareness

The understanding and recognition of potential dangers or risks in an environment. It involves identifying hazards like extreme weather, wildlife, or unstable terrain, and taking precautions to avoid harm.

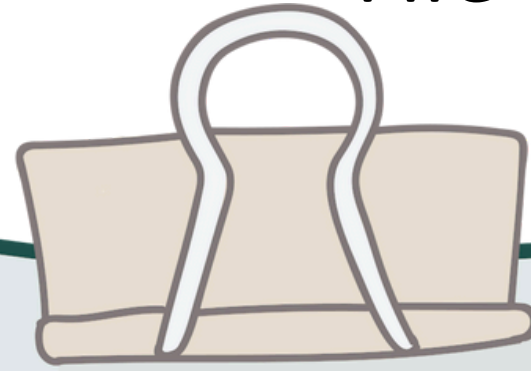


Interdependence

The reliance of organisms, species, or systems on each other for survival and functioning. In ecosystems, species depend on one another for food, shelter, pollination, and other vital functions.



Fife Outdoor Learning Toolkit - Glossary



Journeying

Making our way together through the natural world, reaching the parts that planes, trains and cars can't reach. Sharing the ups and downs, the sunshine and the showers.

Man-made

Refers to objects, structures, or changes to the environment that are created by humans, as opposed to those that occur naturally. Examples include cities, roads, and machines.



Natural

Relating to the physical world and the organisms or processes that occur without human intervention. Natural elements include mountains, rivers, forests, and animal species.

Navigating

The process of planning and directing a route or course, especially across unfamiliar terrain. It involves using tools like maps, compasses, or GPS to determine position and direction.

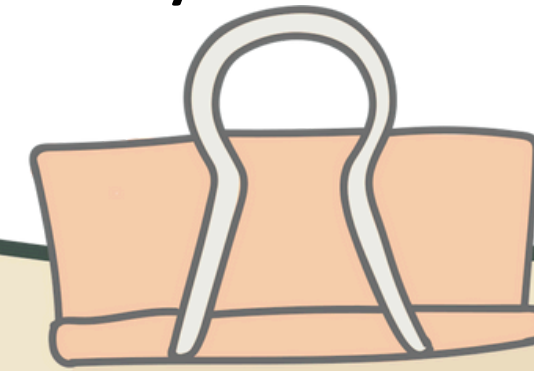


Ordnance Survey Map



A detailed and standardised map used for navigation, created by the Ordnance Survey, a national mapping agency in the UK. These maps include information on terrain, roads, and geographical features.

<https://osmaps.com/>

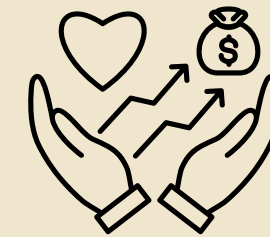


Rural

Areas characterised by open land, low population density, and often agriculture or natural spaces. Rural areas are typically outside of urban centres.



Social Enterprise



A business model that aims to address social, environmental, or community issues while also generating profits. The focus is on creating positive change through sustainable practices.

Sustainability

Sustainability means meeting present needs without harming future generations, by balancing environmental care, economic growth, and social well-being to ensure a healthy planet and society for all.



Terrain

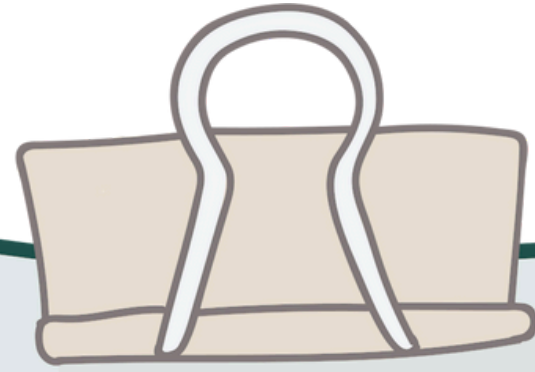
The physical features of a piece of land, including its elevation, slope, surface type, and natural characteristics. It can vary from flat plains to rugged mountains.

Urban

Relating to cities or towns, particularly those with high population density and infrastructure such as roads, buildings, and public services. Urban areas are typically more developed and industrialised than rural areas.

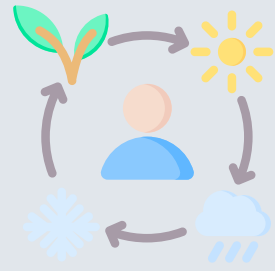


Fife Outdoor Learning Toolkit - Glossary (Simplified)



Adaptation

When living things change in some way to help them survive in their environment. For example, some animals grow thicker fur to stay warm in cold weather.



Adventuring

Developing new skills and working to improve them, challenging ourselves, finding out what we can do, getting new perspectives and feeling the thrill of success.



Biodiversity

The many different types of living things on Earth, like animals, plants, and insects. The more variety there is, the healthier the planet is!

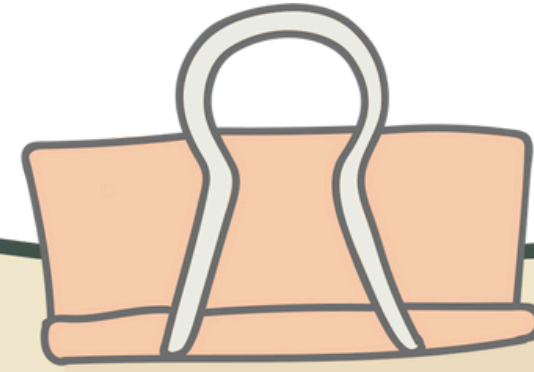
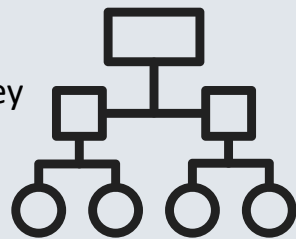


Carbon Footprint

The amount of pollution we make, from things like cars or using electricity. We try to make less to keep the Earth clean.

Classifies

When you sort things into groups based on what they are like. For example, animals can be classified into groups like mammals, birds, and reptiles.



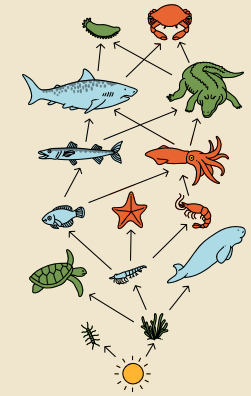
Climate Change

When the weather on Earth changes over a long time because of things like pollution. It can cause problems like hotter temperatures, storms, and rising sea levels.



Ecosystem

A community of living things (like plants and animals) and their shared environment (like water, air and soil). They all depend on each other to stay healthy. Ecosystems can vary in size, from small ponds to large forests or oceans.



Environment

Everything around us, including nature (like trees, animals, and water) and human-made things (like buildings and roads). We all live in the environment and need to take care of it.



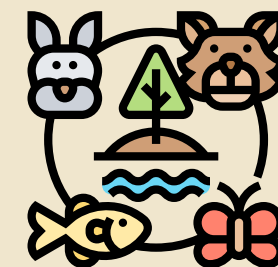
Hazard Awareness

Knowing about possible dangers in the environment, like floods, roads or wild animals, and understanding how to stay safe.

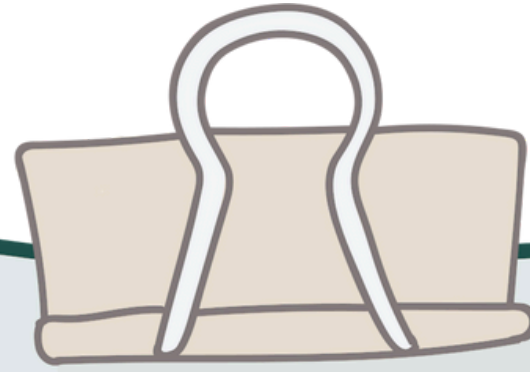


Interdependence

When living things rely on each other to survive. For example, bees help flowers grow by spreading pollen, and flowers give bees food.



Fife Outdoor Learning Toolkit - Glossary (Simplified)



Journeying

Making our way together through the natural world, reaching the parts that planes, trains and cars can't reach. Sharing the ups and downs, the sunshine and the showers.



Man-made

Things that are created by people, not nature. For example, buildings, cars, and roads are man-made.



Natural

Things that come from nature, like trees, rivers, mountains, and animals. These are not made by humans.



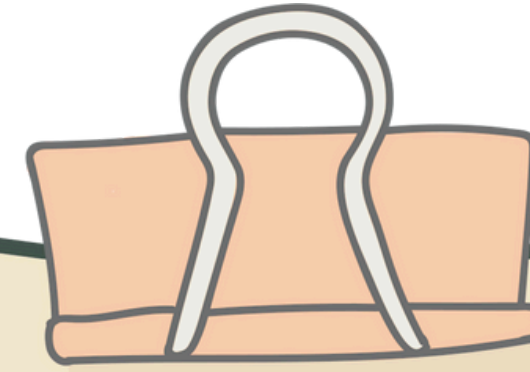
Navigating

Finding your way around our world. Learning to interpret maps and directions, identifying features that help us know where we are and where we are going.



Ordnance Survey Map

A special map that shows details about land, like hills, roads, rivers, and buildings, created by the Ordnance Survey, a national mapping agency in the UK. They help people navigate. <https://osmaps.com/>



Rural

Places far from the city with lots of open land, like farms or forests. It's usually very quiet and peaceful.



Social Enterprise

A business that tries to make the world better, like helping the environment or supporting people in need, while still making money.

Sustainability

Sustainability means taking care of the Earth so that people, animals, and plants can live happily now and in the future. It is about sharing and not wasting things!



Terrain

The physical features of a place, like whether it is flat, hilly, or rocky. It's what the land is like in a certain area.

Urban

Places like cities or towns where there are many people, buildings, roads, and lots of activity. It's the opposite of rural areas.

