

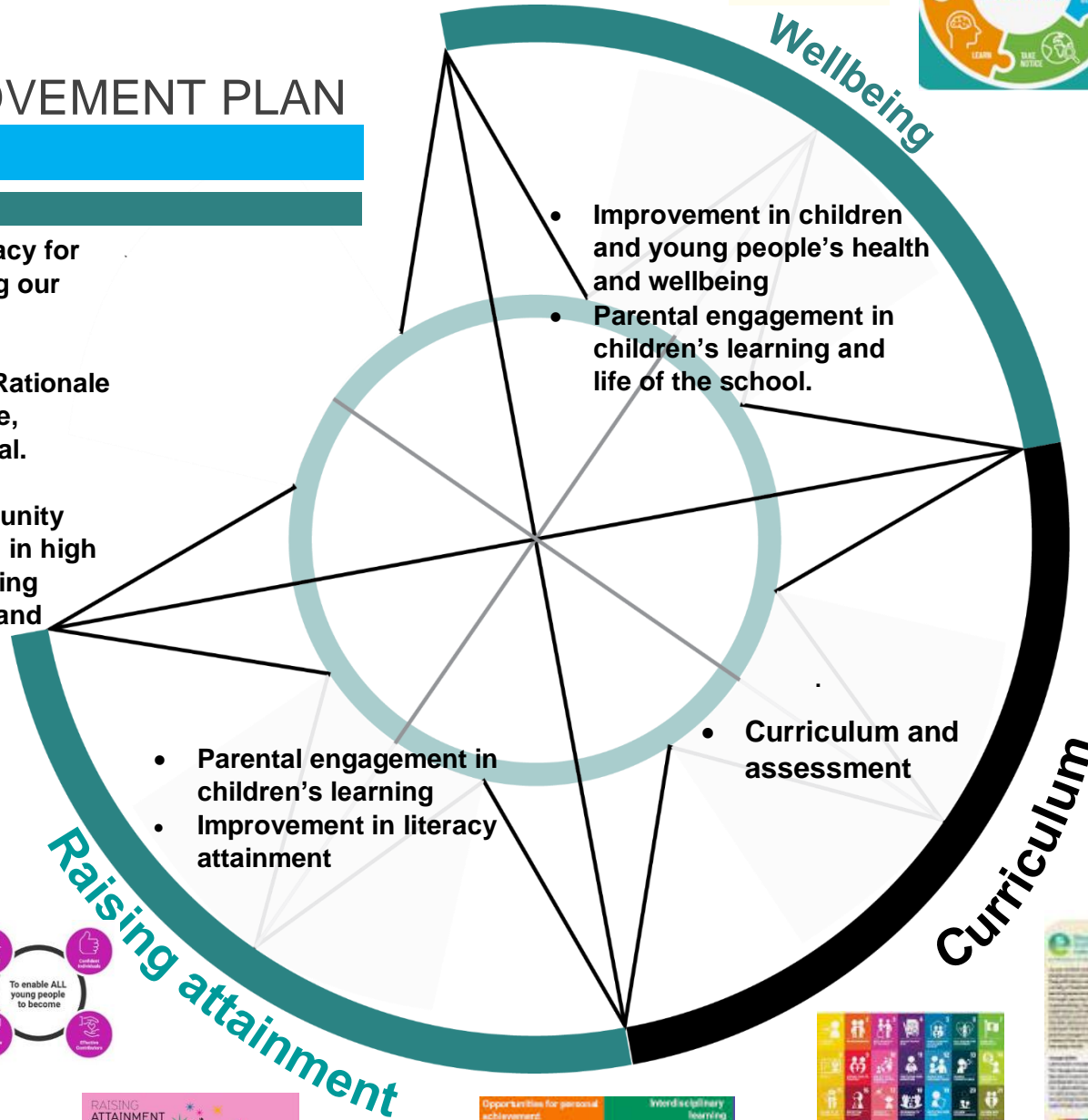


SCHOOL IMPROVEMENT PLAN 2024/25

1. Raise attainment in literacy for all, meeting or exceeding our stretch targets of 87.4%.
2. Our shared Curriculum Rationale will be relevant, inclusive, equitable and aspirational.
3. The whole school community will support our children in high quality emotional wellbeing activities, interventions and approaches.

Expected impact

- Early intervention and family learning to ensure children at Early Level have opportunities and skills to achieve reading, talking, listening, and writing benchmarks..
- Our school library and class book corners will include attractive, high quality, texts which are inclusive and support diversity.
- Increased awareness of skills for reading reported by parents by January 2025.



Expected Impact

- All families to be aware of the wellbeing approaches used universally and additionally to share approaches between home and school.
- Increased engagement in family wellbeing activities.
- Reduction in requests for CAMHS/Educational Psychology referrals as first course of action.
- Improved mental health and resilience reported by children and families.

Expected Impact

- Our curriculum rationale will reflect a rights-based approach that is relevant to our current context
- Increased understanding about the curriculum and vision/aims of education by staff, pupils and families.
- Learning in Science, Technology Digital Literacy, Social subjects, outdoor learning, play, and Numeracy will be linked to learning for sustainability, Global goals for Target 2030, and UNCRC.