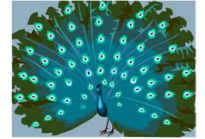




Pittencrieff Nursery Improvement Priorities 2023-2024



Parental Engagement

- Whole community consultation
- Improved communication through Seesaw, calendar of events, weekly Sway, termly newsletter, parent board, questionnaires
- Termly AM/PM Stay and Play sessions
- Termly family learning sessions with planned focus
- Develop learning at home with lending library, weekly rhyme/sound/number activity
- Increase community links with use of church space, parent support in outdoor learning, artist of the week display in local shop, connections with local supermarkets
- Build relationship with local care home

Conceptual Numeracy

- Audit of staff knowledge and audit of nursery resources
- CPD opportunities for staff
- Conceptual numeracy workshop for parents
- Staff visits to other settings where conceptual numeracy is embedded in practice
- Fixed item on weekly team meeting agenda of exploring E & O linked to conceptual numeracy
- Messy Maths used as a core resource for staff development, evaluation, improvement
- Opportunities for all colleagues to plan, moderate and create conceptual numeracy activities and resources