

Syllable Identification

A syllable is a single unit of speech, typically containing a vowel sound. Syllables are the building blocks of spoken words.

Being able to identify syllables means splitting words into smaller chunks, this makes longer and more complex words much more achievable for children when they are learning.

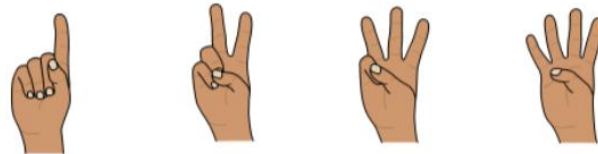
Being able to identify the number of syllables (or beats) in words is an important skill for children to be able to say words clearly – especially longer, more complex words. It also helps children to learn and recall new words.

Step 2. Techniques for syllable identification

Clapping out the syllables in a word



Tapping your hand or fingers



Using visual aids such as building blocks to represent syllables in words



Game 1

Hide toys (e.g. animals) around the room and take turns finding them one by one, clap out the syllables as you find them.

Game 2

Put household objects into a pillowcase and take turns taking them out one by one and clap out the syllables.

Tip for parents

Sometimes it helps to put your hand under your chin when you say a word, the amount of times your chin moves down tells you the number of syllables in a word.



Video Link:

https://youtu.be/PK_fmdLipAk

More information:

You can find more tips and advice on our social media:

Facebook: NHS Fife Speech & Language Therapy

Twitter: @banter4bairns

We also have an advice line – times and phone numbers for this will be shared on social media or phone 01592 226784 for details.

