

Phase 1 Time Assessment

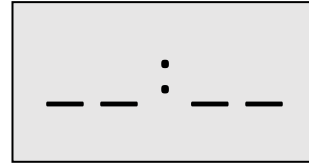
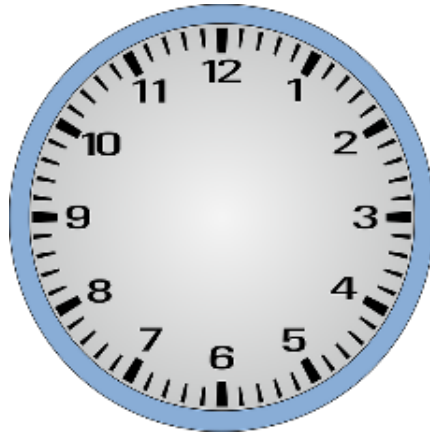
Phase 1 Progression Overview	Assessment Note	Marks
<ul style="list-style-type: none"> I can link daily routines and personal events to time sequences. 	Question 1	
<ul style="list-style-type: none"> I can name the days of the week in sequence, know the months of the year and talk about features of the four seasons in relevant contexts. 	Question 2 and 3	
<ul style="list-style-type: none"> I can recognise, talk about and where appropriate, engage with everyday devices used to measure or display time, including clocks, calendars, sand timers and visual timetables. 	Have you observed your children doing this?	
<ul style="list-style-type: none"> I can read analogue and digital o'clock times (12 hour only) and represent this on a digital display or clock face. 	Question 4	
<ul style="list-style-type: none"> I can use appropriate language when discussing time, including before, after o'clock, hour hand and minute hand. 	Have you observed your children doing this?	
Assessment Note: All these questions can be asked verbally instead of a written assessment.		

2	Write the days of the week in order 1. _____ 2. _____ 3. _____ 4. _____ 5. _____ 6. _____ 7. _____	1
3	In spaces provided below name three months of the year. _____ _____ _____	1

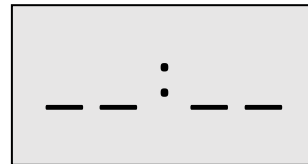
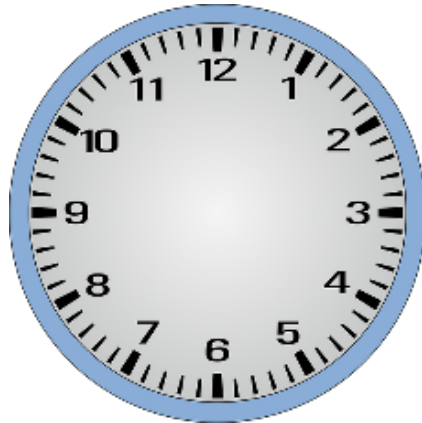
4

Show these times on both clocks

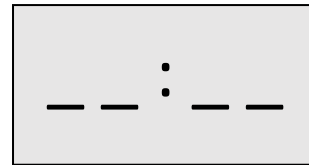
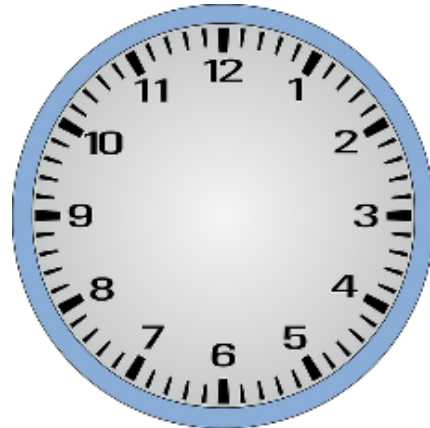
6 o'clock



4 o'clock



12 o'clock



9 o'clock

