

Newport Primary

School Travel Plan



This Travel Plan has been compiled and written by
Marta Ramage, Fife's Travel Plan Coordinator.

Session 2022-2023

Newport Primary School
Cupar Road
Newport-on-Tay
FIFE
DD6 8JT



SUMMARY PAGE

The following travel plan is a collaborative plan by parents, children, staff and stakeholders who have researched and devised the content, agreeing the actions and aims to make the overall journeys to and from Newport PS safer, healthier and more enjoyable by:

- Reducing congestion around the school by reducing the number of cars used for the school journey.
- Increasing awareness of Active Travel and educating all about road safety.
- Improving Active Travel facilities (bike and scooter storage, helmet storage, etc.).
- Promoting alternatives to car travel (cycling, walking and scooting), increasing the percentages of active travel.

The key issues and perception relating to journeys to and from school were identified as - inconsiderate parking around the school gate and surrounding streets, which causes problems including: -

Congestion

Blocked vision for walkers and cyclists

Blocked vision for other drivers

Low proportion of children actively travelling to school, especially in bad weather

Concerns about road safety and speed of traffic

43% live within a 2-mile radius of the school, however, not every family answered the question but when asked how long your journey takes **61%** stated it took less than 10 mins.

Routes identified as safer routes to school are:

1. Linden Avenue/Victoria Road
2. Kirk Road
3. Nature Trail
4. Cupar Road

Proposed Behavioural Actions

Promote Active Travel School

Promote Safer Routes to School

Road Safety Education School/Parents/Fife Council

Reduce Congestion around the school gate School/Parents/Fife Council

Deliver Cycle Training School/Fife Council

This plan is valid for 6 years and will be reviewed during year 3.

1.0 INTRODUCTION

1.1 School background

Newport Primary School sits on the edge of the town of Newport-On-Tay. The town is on the south shore of the Firth of Tay opposite Dundee and lies between the Tay's road and rail bridges. It is part of an urban coastal ribbon that includes Wormit and Woodhaven.

The town expanded during the 19th century thanks to Thomas Telford's new harbour and the development of a fashionable residential commuter settlement for wealthy Dundee jute manufacturers. Formerly known as New Dundee, many of Newport's 8,000 residents still commute to employment in Dundee.

The school itself was built in 1978 and is situated outside the village in close proximity to the main routes to St. Andrews, Dundee and Kirkcaldy. It is a co-educational, non-denominational school whose school roll includes children from Newport, Leuchars, Tayport, Wormit and Drumoig. The school has a Site Management Plan that informs users about the site rules for pedestrians and vehicles and will be displayed within the school.



2.0 POLICY AND OBJECTIVES

2.1 Formation of Junior Road Safety Officers

To address the issues raised with congestion around the school gate and to work on future initiatives the school formed its travel action group which consists of Junior Road Safety Officers and members of the school parent council and parent volunteers.

Alissa (P7)

Jayden (P7)

Alfie (P7)

Luke (P7)

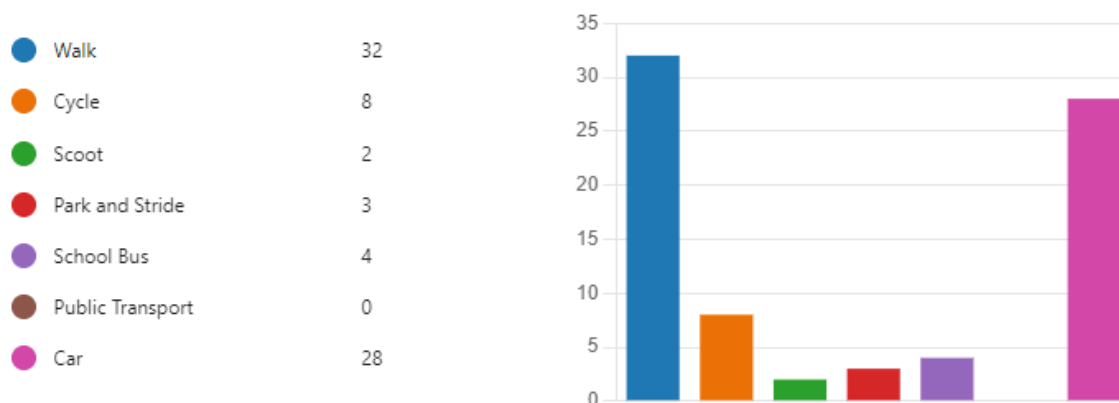
3. CURRENT TRAVEL PATTERNS

3.1 Questionnaire Surveys

During the consultation period **77** families and **17** staff members responded, and the following analysis is based on the data from these surveys.

3.1.1 Family Survey Data

42 families highlighted that active travel was their main mode of travel to school. **3** families highlighted that they Park and Stride followed by **28** who drive to school.

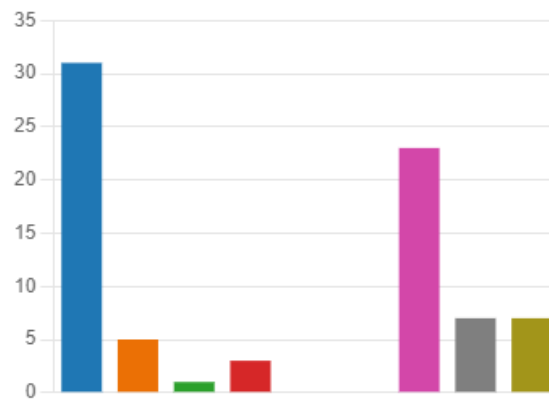


Those who indicated that they drove to school were asked "Where do you park, please give the name of the street or car park". Only **3** families answered citing Cupar Road and Victoria Street.

Families who drove to school were also asked about parking restrictions around the school gate. **25** stated that they knew about the restrictions, and all **28** knew what they meant with only **3** answering if they knew that parking on these would incur a penalty charge.

When asked what the main reasons is for choosing their travel mode, families answered the following.

It is good for my child's health.	31
It is good for the environment.	5
There is limited parking around ...	1
It is the fastest.	3
It is the safest.	0
It is the cheapest.	0
It fits in with my family routine.	23
It is the only mode of travel avai...	7
It is too far	7



When asked "How far do you live from School?" only **31** families answered this question. The diagram below highlights this data but does not give a true reflection of the number of pupils that live within an active travel zone.

Within 1 mile	12
Within 2 miles	9
Within 3 miles	2
Within 4 miles	2
5 miles or more	6



The following diagram showcases the answers from the question "How long does your journey to school take?" **All** families answered with **28 families** indicating that their journey to school takes between 0 and 10 mins.

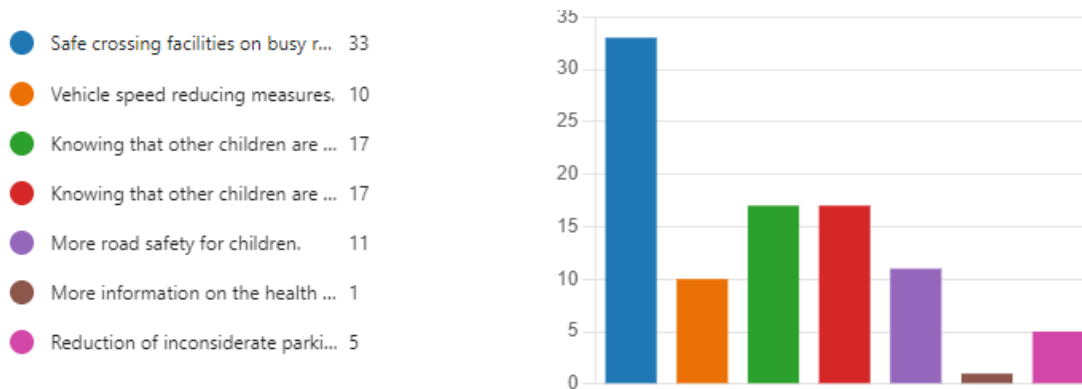
Less than 5 mins	20
5- 10 mins	31
10- 15 mins	43
15 - 20 mins	16
More than 20 mins	5



According to the survey **44%** of families are satisfied with the way their child/children travel to school, **40%** stating that they were somewhat satisfied with only **10%** stating that they were neither satisfied nor dissatisfied and **5%** saying they are somewhat dissatisfied.

However, of those citing they were dissatisfied none gave an explanation to why!

When asked "What factors might affect your decision whether to let your child/ren travel actively to school, or to the bus stop, families indicated that the reduction of inconsiderate parking around the school gate.



28 families indicated that they were not aware of any active travel initiatives taking place at school to encourage pupils to be more sustainable.

Finally, families were asked if there was anything else they would like to tell us about their journey to school. Some of the main points included. A full list can be found in Appendix 2.

- Cupar Road is busy more should be done with regards to speeding
- More crossings at Station Road, Cupar Road, Kirk Road and Tay Street

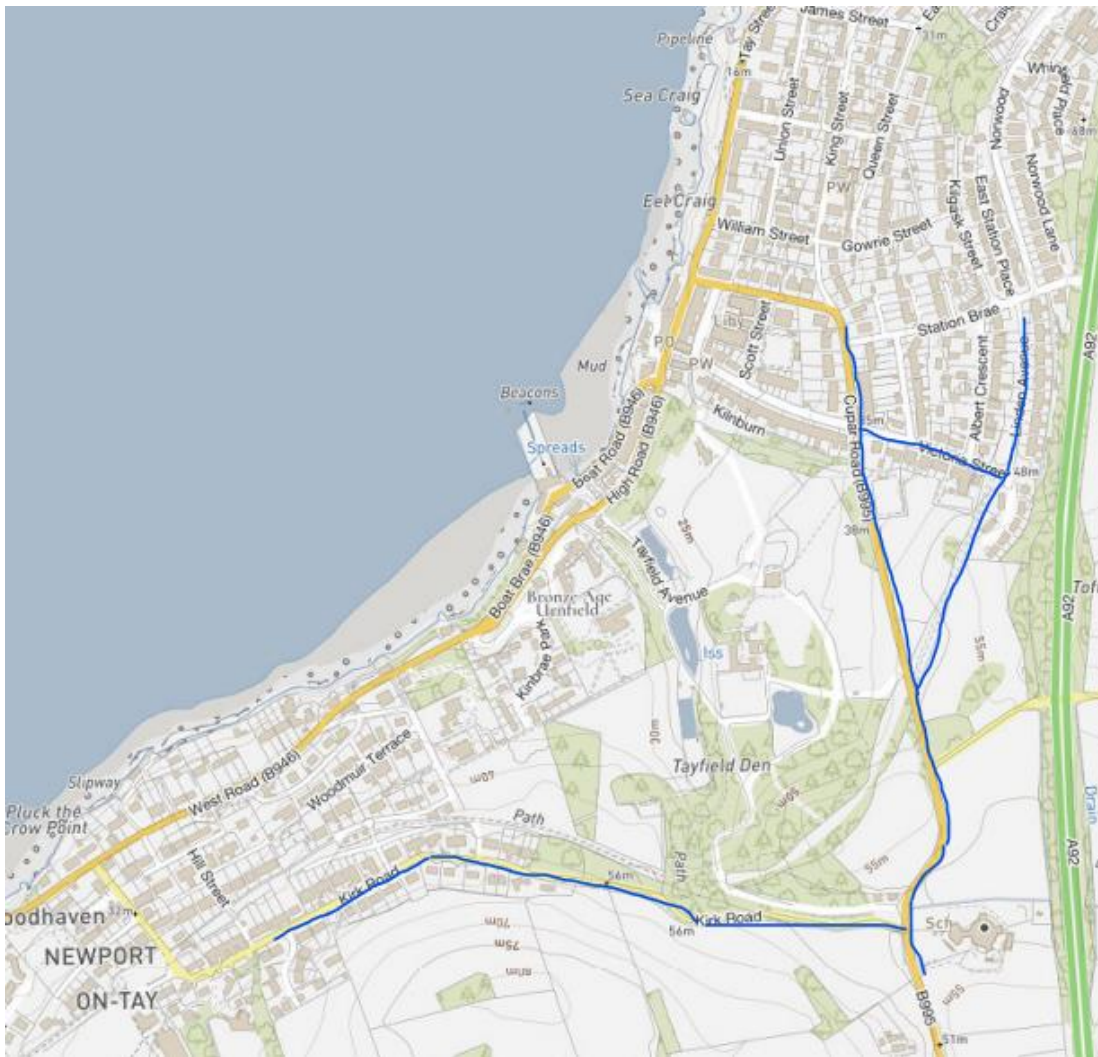


4.0 MAPPING WORK

A mapping exercise was carried out to identify the routes pupils travelled. These were then analysed and the 4 main active travel routes to school were identified.

These routes are:

1. Linden Avenue/Victoria Road
2. Kirk Road
3. Nature Trail
4. Cupar Road



5.0 ROUTE AUDIT OF KEY ROUTES TO SCHOOL

A site visit of the above key routes was carried out on morning of Friday 25th November. The weather conditions were cold and bright with sunny spells.

The main issues noted by the JRSOs was congestion outside the school gate and misuse of the school carpark.

6.0 STAFF DATA

17 members of staff undertook the online survey answering how they travel to school and the impact this has on the school run.

The following diagrams highlight their mode of travel.

How far do you travel for work?

● Under 2 miles	2
● 2 - 5 miles	4
● 6 - 10 miles	4
● 11+ miles	7



How do you travel to work?

● Walk	1
● Cycle	0
● Bus	0
● Car Share	0
● Car	16



Members of staff who cited that they drove to school parked within the school grounds. When asked what would encourage them to consider alternative modes of transport majority stated that nothing as they have other commitments outside school and felt that the local transport links did not fit their daily routine.



However, 6 members of staff did state that they would consider car sharing.

7.0 BEHAVIOURAL ACTION PLAN

Action	Solution	Action Owner	Target Date (Academic year)
Promote Active Travel	Take part in Active Travel Months - November and May	School/TAG	Term 4
	Take part in the Sustrans Big Walk and Wheel	School/TAG	Term 3
	Promote through school social media	School/TAG	Ongoing
Promote available routes to school	Upload map to website	School	Ongoing
	Put information board up at parents' nights	School/TAG	
	Articles in school newsletters, social media and assemblies	School/TAG	
Road Safety Education	Take part in Road Safety Week November and include articles during the academic year	School/TAG	Ongoing
Reduce congestion around school gate	Develop the following: Parking Pledge Park N Stride Site Walking Bus	School/TAG	Ongoing
Bikeability	Offer cycle training to all P6 and P7 pupils Apply for cycle parking fund and investigate becoming a Cycle Friendly school.	School	To fit in with school year

8.0 Physical Measures

Action	Action Owner	Target Date

9.0 MONITORING & EVALUATION

The JRSOs will continue to meet periodically to monitor progress and will review the Travel Plan on an annual basis.

Specific progress will be monitored by participation in the "Hands Up Travel Tally" each year and a repeat of the full travel survey will take place 6 years after initial launch.

The school's ongoing commitment to travel planning will be publicised in the school handbook, the school newsletters, the Parent's notice board and through assemblies.

10. DISTRIBUTION OF SCHOOL TRAVEL PLAN

The following bodies will receive a copy of the School Travel Plan:

- Fife Council Assets, Transport and Environment via the Travel Plan Team
- Fife Council Education Service
- Fife Council School Estates Team
- Parent Partnership
- Active Schools
- Copies will also be made available to the parents from the School Office and via the school information site.

Appendix 1. - Route Audit

FIFE COUNCIL ASSETS, TRANSPORTATION & ENVIRONMENT

NEWPORT PRIMARY SCHOOL

ROUTE SAFETY AUDIT

INTRODUCTION

This report results from an Audit of key routes undertaken at Newport Primary School at the request of the school to facilitate their School Travel Plan.

The school is situated within a 20 mph timed zone on Cupar Road. There is an entrance to the staff car park and one entrance for pedestrians.

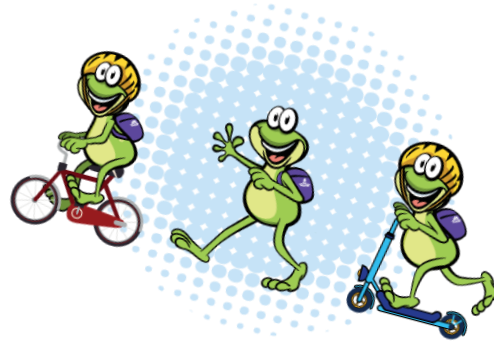
A site visit of the key routes was carried out on the morning of 25th November 2022. The weather conditions were cold bright and sunny with sporadic showers. The audit team consisted of:

- Marta Ramage School Travel Plan Coordinator
- Kathryn Allan Principal Teacher
- Alissa (P7) JRSO
- Jayden (P7) JRSO
- Luke Anderson(P7) JRSO



The key routes audited were:

1. Linden Avenue/Victoria Road
2. Kirk Road
3. Nature Trail
4. Cupar Road



FINDINGS AND RECOMMENDATIONS

Cupar Road

Issues

The site is the main drop off point for those driving pupils to school and at times is very congested with parents parking, idling and reversing. The road is marked with school keep clears and evidence of traffic calming measures can be seen. There is also an ongoing issue with parents parking/dropping off within the school grounds. Parents perception is that vehicles travelling this route are driving above the speed limit and this causes concerns when deciding if they would allow their children to actively travel to school.

Proposed Solution

JRSOs should look at ways in which to re-educate parents about safer parking habits and ask the community police to come along with the speed camera to ascertain the average speed.

Recommendations

Introduce a parking pledge campaign and work with the school travel plan coordinator to promote the benefits of safer parking in and around the school gate

Linden Ave/Victoria Road

The walking route is within a 20 mph zone with good visibility and connecting into the off road nature trail. In places the paths are narrow, and the streets can sometimes be congested but the pupils felt that this was not a barrier to actively travelling to school.

Recommendations

JRSOs to include road safety campaigns into their action plan and deliver these through school presentations, competitions and travel active campaigns. Fife Council has a dedicated Road Safety team who can assist with materials and advice.

Nature Trail

The off-road nature trail links streets around the school and at times can be quite muddy, especially in Winter. The steps at the end of the trail are difficult to navigate if you are on

wheels. There is an alternative route through the doctors surgery for those on wheels but further investigation needs to be carried out.

Proposed Solution

Due to the ongoing community led project with Fife Council who are looking at upgrading the nature trail JRSO to liaise with the school travel plan co-ordinator for input and updates.

Kirk Road

The street is very narrow in places and can be very congested at times cars, however, most of the cars are parked on one side of the road. The part of the street is within the 20mph zone with built up houses, however there is a short rural stretch leading to the school gate where parents park and cause visibility issues for those actively travelling up Cupar Road.

Recommendations

JRSOs to promote the nature trail as an alternative route and work with parents about making safer choices when choosing to park the car.

SUMMARY

Newport Primary school is well served by existing crossing points and footways as well as an off-road nature trail that links into the school.

The challenge at Newport will be encouraging parents to change their behavioural patterns and introduce active travel into their daily routine.

This will help reduce congestion and improve safety around the school gate and within the school car park. Promoting safe walking routes and seeking the implementation of the recommendations should make the trip to school more enjoyable and encourage more participation in active travel.

Appendix 2

Parent Suggestions and Thoughts

The busy road is a concern - i still think more can be done for speed calming measures, especially with the stagecoach buses that flies around!

We walk whenever possible but if both of us are going to work after drop off it makes walking tricky due to time constraints. When the kids are asked how they travelled/get rewards for walking, my wee girl is sad that she can't walk every day but it's not possible with wraparound childcare.

My daughter is p2 and cycles on the pavement and I sometimes feel that we are in the way but she cant cycle on the road

It's a shame you cannot pick one answer to these questions - many of them are equally important. Some other important reasons for getting the bus include it's the safest, you can't park at school, it's better for the environment and it fits with parental work patterns. Some of the other important reasons for not encouraging walk or cycle to school include the speed of the traffic, lack of safety crossing points (no lights or zebra crossings) and the parking at the school. A walking or cycling bus to school would be a great idea!

I don't like the plastic badges that get handed out for walking to school, it's a bit contrary to "walk to school it's good for the environment" versus "well done, here's some single use plastic". Perhaps something else could be found that's biodegradable.

My family work commitments make a huge contribution to how we get our children to school

We actually use a mixture of bike and car travel depending on n before/after school care needs of our children. We cycle when the children attend during normal school hours and drive in the mornings to drop the children at breakfast club on the days we need to.

My children would love to walk / cycle to school once we move closer next year, but this won't be possible owing to a stretch of 50mph road en route with no walking path.

We enjoy our journey to school for some fresh air to reset our heads and some time together before a day at school/ work!

My son in P4 now walks to school when he can (when at childminders he cant).

The school would benefit from a crossing at the Kirk Rd junction. It's hard to see traffic at the junction and cars can sometimes come in/out the junction very fast.

At the moment we usually walk to school, however in the past I had no choice but to drop them off in the car due to my work schedule e.g. it's just not possible for some families to make the journey to school by any other makes except a car

Would prefer that the school bus was smaller so that it could drop children off in school grounds so that they don't have to walk down main road and into school by themselves.

We drop off on the way to work or the childminder drops in the morning. Walking is not an option unfortunately most days

We live too far to walk or cycle to school and I have work that I need to go straight to from school.

Our mode of transport is mainly based around work commitments and our child being young. There isn't much flexibility within that currently. When our children are older and can travel to school themselves, we would encourage more sustainable travel plans.

We had begun to walk to school recently but have gone back to travel by car at the moment as I've not been well. Sometimes it's impossible to walk due to the time it takes as I work full time and have certain work commitments that don't allow us time to walk to, and me back from, school. Some parents park badly in the spaces provided meaning they take up more than 1 space. Perhaps if the parking lines were repainted it would be very clear what a space is and prevent them from overparking meaning another car cannot get parked.

We have a 50/50 split between walking and driving. For working parents who start work at 9am or need to drop kids on way to work, walking is difficult. Travel tracker seems great until your kid is upset because your work schedule means they have to drive (we have had tears). Same is true for those families with other kids at a different school or nursery - we are split with wormit so need to drive on those days. And after school the same is true for those who have sports activities beginning soon after school. For when they cycle/ walk alone - the long straight of Kirk road by the fields seems a very quiet road to allow young kids to walk along alone. Means I've put off allowing an 8 year old to go alone, although they are capable. Could there be a warden half way along? Same with Cupar road? Would definitely partake in a walking school bus if there was one.

I encourage walking to school wherever possible for environmental reasons and also for the mental and physical benefits. However, given the structure of our day and having to take siblings to an alternative nursery in Dundee at the same time, because there is no space for them in the school nursery, we are forced into the position of having to use a car simply for the time factor. If the school and nursery could accommodate all local children that live in the area close by, there would be less vehicle use all round.

Unfortunately as I have a morning meeting at 9am I have to drive to school so as I can be home on time, I would much prefer to walk my kids to school. I would be more keen to allow them to walk to school alone if there was a safer crossing from the berry's den side of Kirk Road. Having to cross Kirk Road to get to the crossing is quite hazardous as traffic is coming in all directions and some parents drive very fast. A walking bus up Cupar Road would also be great.

Travel by car only because too far to walk

Question 9 does not apply. My child is not able to walk alone and I cannot walk them to school and get to my work on time.

We live in Tayport. I drop them off then head straight to Dundee for work

I have no choice, I need to drive to work straight after drop off. Would use alternatives if I could

I live 6 miles from the primary school and my child is 5 years old.

I believe it makes for a better school day when we can cycle.

I would always prefer my children walk but if time does not allow (owing to the strict 08:55 policy of not allowing children through their classroom door while the children hang up their coats) sometimes we must choose to drive but parking is an absolute nightmare and causes stress and anxiety all round. If you are going to put pressure on children and parents to get to school 'on time' then improvements to drop off facilities would be beneficial.

I think walking to school also provides valuable social interaction with other children and parents.

I understand the importance of promoting healthy habits but unfortunately due to work commitments some parents do not have the luxury of walking to school. I feel this should not be frowned upon as this is sometimes not a choice.

We use a car due to having different children at different childcare settings at other times we endeavour to walk or cycle.

I would love to walk to school however we drive to school in the morning as we are nearly 2 miles away which is all uphill and with 3 children aged 5 and under it would be very challenging to manage on my own. However, we walk home from school as often as possible when after school clubs allow. I would like to add that I feel a zebra crossing would be extremely beneficial at the corner turning onto Kirk Road as I feel this is very dangerous after school with kids running and cars trying to turn around that corner. Thanks

I enjoy the walk to school with my children.

Make more pedestrian crossings on main roads (Station Road, Cupar Road, Tay Street) in village and at school

Walking to school most days but sensory issues mean we sometimes have to drive to get to school in time.

We are living temporarily in Leuchars. We will be moving to drumoig and at that point the boys will get the school bus.

Travelling to school by car is a temporary measure for now. We are in the process of moving to the school area.

I think crossing the road at Kirk road is an accident waiting to happen, with cars going in lots of different directions and children not checking carefully before they step out. Is it possible to get a lollipop man/ woman for this crossing? I'm reluctant to let my older child walk herself as I think this junction is really dangerous

I'd love cycling up Cupar Road to be safer, but especially around the school entrance/ Kirk Road junction it feels quite risky.

My child sometimes walks and sometimes cycles. There was no option to choose two options on the questions.

It would have been good to have been able to choose more than one option on some questions.

We are happy to walk to school with our children. Traffic can sometimes be quite congested around Kirk Road due to the number of people parking there to drop their children, but it still feels safe and we are pleased that there are the traffic lights at the busiest road.

I think Cupar Road from the tennis courts to the school should be one way which would make cycling and walking much safer

I want my child to be safe. From road dangers and stranger danger

It would be really great if there could be a way for children to cycle to the bike storage rather than having to get off and push - with young children this step is surprisingly challenging both at the start and the end of the day!

Think children should be encouraged to walk without a parent or guardian from earlier in their schooling life. I believe this would promote independent skills, reduce anxiety in later life and increase their resilience. In East Lothian it is encouraged from P3. It may promote more children going out to play as opposed to "play dates". Newport is very safe...

Speed of people who are driving down Cupar Road alarming at times