



# Lawhead Primary School & Nursery

Friday 17<sup>th</sup> May 2024



## 'Aiming High'

Embracing Challenge, Nurturing Creativity, Being Responsible, Showing Respect, Celebrating Achievement

### What's Happening Next Week?

<b>Monday 20/05</b>	<ul style="list-style-type: none"> <li>• Walk to School Week – please try to come to/from school in a healthy, active way – walk, cycle, scooter or park and stride.</li> <li>• P7 Violin/Viola Players – Madras play day</li> <li>• Rotary club football tournament – Good luck to our team!</li> </ul>
<b>Tuesday 21/05</b>	<ul style="list-style-type: none"> <li>• Mr. Munro's After School Football – P6/7</li> </ul>
<b>Wednesday 22/05</b>	<ul style="list-style-type: none"> <li>• AM – P4-7 assembly with Mrs. Bain and P1-3 assembly with Mrs Simpson</li> <li>• Miss Johnston &amp; Mrs. Nixon's lunchtime singing club P5</li> <li>• P5, P6 and P7 violin/viola groups with Mr Higgins</li> </ul>
<b>Thursday 23/05</b>	<ul style="list-style-type: none"> <li>• AM – P5, P6 and P7 Cross Country Race in Kirkcaldy – Good luck to our runners</li> <li>• PM - P1 Outdoor learning session - please dress appropriately for the weather</li> </ul>
<b>Friday 24/05</b>	<ul style="list-style-type: none"> <li>• Walking bus – sign up using this link: <a href="https://forms.office.com/e/zTcSjRPcN0">https://forms.office.com/e/zTcSjRPcN0</a></li> <li>• AM – P1/2 Outdoor learning session - please dress appropriately for the weather</li> <li>• AM – P1 Shared start – group 6</li> <li>• Lunchtime homework club P4-7</li> <li>• Rights respecting school afternoon for all pupils – organised by the pupil council</li> </ul>

### Class SWAYs:

**Nursery:** Visit your child's SeeSaw account to keep up-to-date on your child's nursery experiences.

<b>P1:</b> <a href="https://sway.office.com/uUpi3A7HpEhJIVpg?ref=Link">https://sway.office.com/uUpi3A7HpEhJIVpg?ref=Link</a>	<b>P4/5:</b> <a href="https://sway.office.com/vELlhJcvtNpBIMOn?ref=Link">https://sway.office.com/vELlhJcvtNpBIMOn?ref=Link</a>
<b>P1/2:</b> <a href="https://sway.office.com/peubyKDzLKDHFVvw?ref=Link">https://sway.office.com/peubyKDzLKDHFVvw?ref=Link</a>	<b>P5/6:</b> <a href="https://sway.office.com/wYUzXLKRKGFbOY2C?ref=Link">https://sway.office.com/wYUzXLKRKGFbOY2C?ref=Link</a>
<b>P2/3:</b> <a href="https://sway.office.com/8uLMDJmJWg2KhlFe?ref=Link">https://sway.office.com/8uLMDJmJWg2KhlFe?ref=Link</a>	<b>P6:</b> <a href="https://sway.office.com/yBT4OhCFaDILryIA?ref=Link">https://sway.office.com/yBT4OhCFaDILryIA?ref=Link</a>
<b>P3/4:</b> <a href="https://sway.office.com/7NjZdtRdlSZkyoy9?ref=Link">https://sway.office.com/7NjZdtRdlSZkyoy9?ref=Link</a>	<b>P7:</b> <a href="https://sway.office.com/q8F4FmBlSawJ6Zi6?ref=Link">https://sway.office.com/q8F4FmBlSawJ6Zi6?ref=Link</a>

### **P7 Residential – Deposit Reminder:**

This is a reminder for P6 parents that the deposit for the P7 residential is due by 31<sup>st</sup> May. Please refer to the letter issued last term for payment information or contact Mrs Bain using [lawheadps.headteacher@fife.gov.uk](mailto:lawheadps.headteacher@fife.gov.uk) if you have any questions regarding your child's participation. Final numbers need to be submitted to the Belmont Centre by the start of June.

### **Sun Cream:**

Now that the warmer weather is on its way please can parents ensure that they apply sun cream to their child before school or you can send in sun cream for your child to keep in their tray. Staff are not permitted to apply sun cream to children.

### **Diversity and Equalities – Parental Consultation:**

We are in the process of working with pupils, staff and parents to develop our Diversity and Equalities policy. Please can all parents spare a few moments to share their views:

<https://forms.office.com/e/9s5DmZdGAg>

So far we have had around 20 responses. It would be really helpful to get as many as possible to give us a full representation of our parent forum.

### **Do your bit for Walk to School Week! – Message From Our Parent Council**

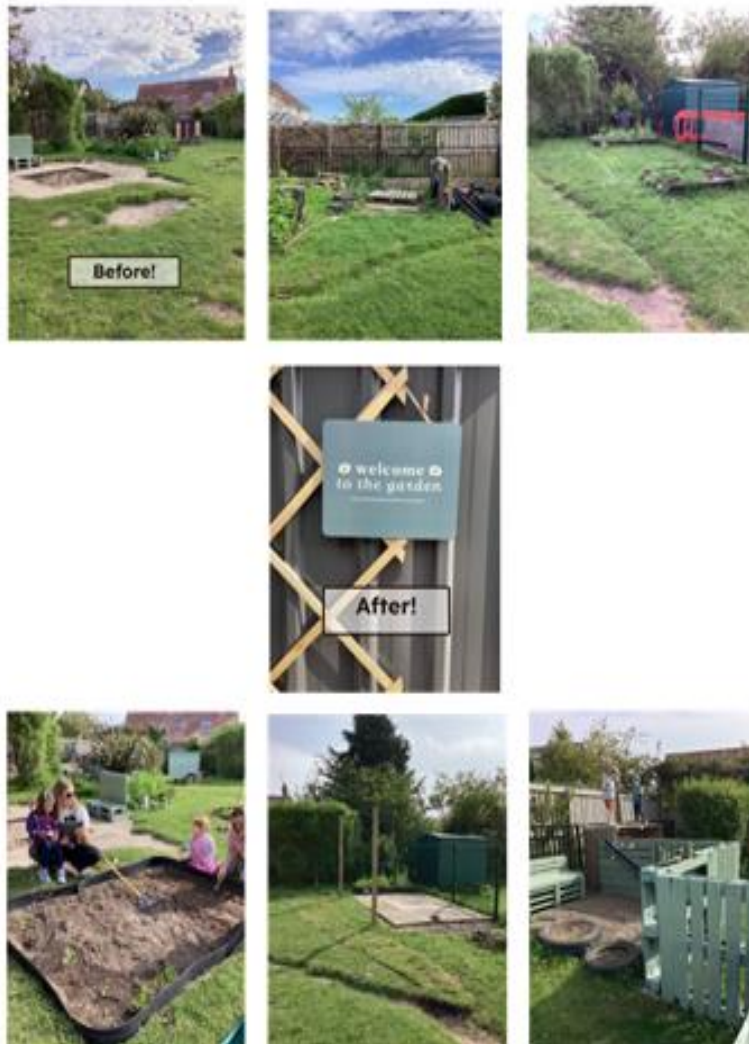
Next week is walk to school week! The school's travel plan sets out our ambition to encourage as many children to walk and wheel to school as possible - to reduce emissions, increase physical activity and reduce some of the dangerous congestion around the school gates. The children will be doing some classroom activities, but it's also something we ask the wider school community to take part in too. Please think about doing your bit next week to support your children. Things you can do are:

- Walk/wheel to school if you live close enough! There are plenty of bike racks
- If you don't, park a little further away and walk the last wee bit (here's a map <https://blogs.glowscotland.org.uk/fi/public/lawheadps/uploads/sites/12645/2023/05/25144119/Lawhead-PS-guide-to-Park-and-Stride.pdf>)
- Join Friday's Walking Bus and come along! (here's a sign up link <https://forms.office.com/e/zTcSjRPcN0>)
- If you do have to park outside the school gate, respect the double yellow lines and switch off your engine



Sign Up Link: <https://forms.office.com/r/Nv3n7jfTyc>

## Nursery Garden Make Over!



We had a wonderful day last Saturday and managed to get through a huge amount of work on our dig day. Our garden has been transformed and we are all delighted with the results. The children were amazed on Monday and have spent a very happy week exploring their new play space.

Special thanks go to our parent volunteers, Mrs Andrew's brother Mike and Pat from Headon Developments who generously provided the hard landscaping materials.

**SAMH**  
Scottish Action for Mental Health

# COMMUNITY FUN DAY



Friday  
26th July  
10.00am -  
4.00pm



Glenrothes Strollers  
Overstenton Park  
Viewfield Park  
Glenrothes  
KY6 2AD

Free Event, Free Stalls  
Free Fruit / Water

- ✓ SAMH Wellbeing Bus
- ✓ Play Talk Read Bus
- ✓ Keyring Making
- ✓ Face Painting
- ✓ 'Old Skool' Games
- ✓ Beat The Goalie
- ✓ Information Stalls
- ✓ Meet The 'Meerkat'
- ✓ SAMH Anti-Stigma Football Tournament (Invitational)

☎ 01383 623179

✉ [sams.cafe@samh.org.uk](mailto:sams.cafe@samh.org.uk)