



# Largoward Primary School

Friday 15<sup>th</sup> March 2024



## 'Being Ourselves, Together!'

Our Values: Safety, Kindness, Happiness, Respect, Learning

### What's Happening Next Week?

<b>Monday 18/03</b>	<ul style="list-style-type: none"><li>• PE Day – Remember your kit</li></ul>
<b>Tuesday 19/03</b>	<ul style="list-style-type: none"><li>• AM - Beatbox music project</li><li>• Parent/Teacher Meetings – 3.30-5.30pm</li></ul>
<b>Wednesday 20/03</b>	
<b>Thursday 21/03</b>	<ul style="list-style-type: none"><li>• AM - Outdoor Learning – please ensure that your child has a coat, extra layers and change of outdoor shoes (wellies would be perfect!)</li><li>• Parent/Teacher Meetings – 5-7pm</li></ul>
<b>Friday 22/03</b>	<ul style="list-style-type: none"><li>• Active schools lunchtime football</li></ul>

Please call 01334 659425 or email [largowardps.enquiries@fife.gov.uk](mailto:largowardps.enquiries@fife.gov.uk) if you need to contact the school.

Website: <https://blogs.glowscotland.org.uk/fi/largowardps/>

**P2-7 SWAY** – Each week we will update with posts relating to our learning and experiences in school. We hope you enjoy finding out more about our week.

<https://sway.office.com/9FRAV3LqvaDYDUd4?ref=Link>

### **Easter Disco – Wednesday 27<sup>th</sup> March:**

Please see details regarding the upcoming Easter Disco in the poster below. Please can all parents complete the MS Form – link below – so that we have an accurate register of pupils attending. Many thanks to Lawhead Parent Council for organising this event for the children. It would be lovely if some Largoward pupils came along.

[Lawhead & Largoward Easter Disco \(office.com\)](#)



# BSL Signs of the Week:

We are learning to count to 20 - [BSL Bitesize: Counting to 20 \(youtube.com\)](https://www.youtube.com/watch?v=BSL_Bitesize_Counting_to_20)



10



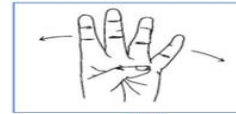
11



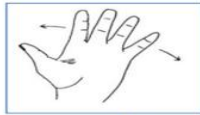
12



13



14



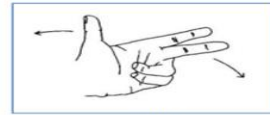
15



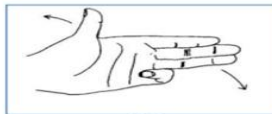
16



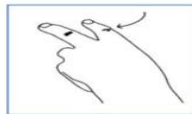
17



18



19



20

## Relationships, Sexual Health and Parenthood Education:

All classes are scheduled to take part in their annual relationships, sexual health and parenthood education lessons in term 4. We would advise that parents visit the website that hosts all lessons and resources - [Home - RSHP](#) to find out more about this important aspect of the health and wellbeing curriculum.

What lessons will my child take part in?

P1 – Early Level - [Early Level - RSHP](#)

P2 – First Level – To Begin - [First Level - RSHP](#)

P3 – First Level – Progression 1 - [First Level - RSHP](#)

P4 – First Level – Progression 2 - [First Level - RSHP](#)

P5 – Second Level – To Begin - [Second Level - RSHP](#)

P6 – Second Level – Progression 1 - [Second Level - RSHP](#)

P7 – Second Level – Progression 2 - [Second Level - RSHP](#)

If you have any questions in relation to this aspect of the curriculum please do not hesitate to get in touch.



LAWHEAD  
AND LARGOWARD

**EASTER  
DISCO**

**27th March 2024**

**NURSERY - P3  
5.30PM - 6.45PM**

---

**P4 - P7  
7PM - 8.15PM**

**Suggested entry donation  
of £1 per child**

**Juice and snack provided**



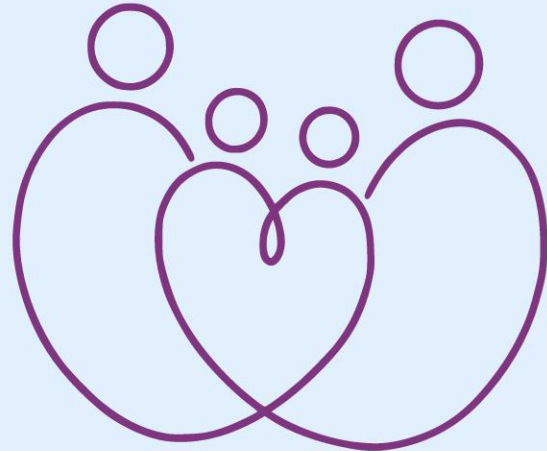


# familiesfirst

.....  
calling for FAMILY SUPPORT  
**VOLUNTEERS!**  
.....

## Are you willing to...

Commit **1 hour a week** to  
provide companionship and  
support to **parents and**  
**carers** who have children  
with additional needs?



## To find out more...

contact Laura Veitch  
[vc@familiesfirststandrews.org.uk](mailto:vc@familiesfirststandrews.org.uk)

or scan the QR codes!



families first  
website



role  
description



# Parent Advice Line



Do you live in Fife and have concerns about your child's speech, language or communication skills? We have experienced therapists available to take your calls if you have any questions.



Please note education staff and health visitors should contact us via the Children's Services Enquiry Line (see your management team or team leader for info)

