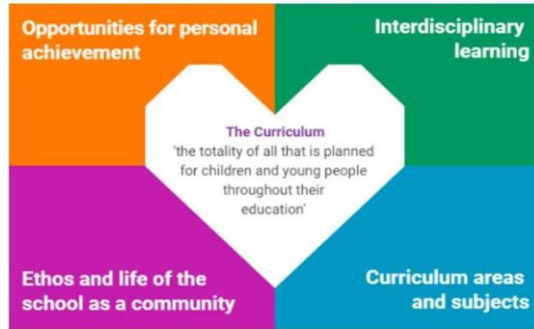


Balmullo PS Learning Overview



Opportunities for Personal Achievements

<p>Outdoor Learning: Natural Connections Active Fife - leisure hub</p>	<p>To enhance learning and understanding we plan opportunities to enhance and extend learning outdoors. We will also be exploring the Natural Connections outdoor learning award.</p>
<p>Our School Values:</p> <p>Metaskills: meta-skills-progression-framework.pdf</p>	<p>We regularly focus and reflect on how our school vision and values can support us in becoming stronger learners.</p> <p>We are also developing our understanding of Metaskills which cover key life skills in Self-management, Social intelligence and Innovation. In class we plan to make metaskills explicitly visible and create opportunities for the children to recognise, understand and explore their metaskills development. Our focus for this term will be Self-Management.</p>
<p>MAD groups:</p>	<p>Through our Making A Difference (MAD) groups and class interdisciplinary learning children are learning to work as a team, make decisions, communicate, compromise and become leaders. Our MAD group's mission this term is to Make a Difference by sharing our learning around STEM for sustainability.</p>

Please email the school office with any news and a photo of personal achievements out with school: Balmullops.enquiries@fife.gov.uk so this can be shared with the class/school and displayed on our school Achievement Wall.

Ethos and Life of the School as a Community

We are a Bronze 'rights committed' school – This term, we will continue our learning and understanding of the Rights of the Child, including Article 29 'Education must develop every child's personality, talents and abilities to the full. It must encourage the child's respect for human rights, as well as respect for parents, their own and other cultures, and the environment'

Children will also continue to explore links to the other rights through their learning in class and at weekly assemblies.

House Activities – In Term 4 we are looking forward to planning our various sporting events for example, our House Relay and Sports Afternoon. We will also be organising a Talent Show as part of our House Competition.

Our older pupils will be planning and organising an end of term show called 'The Pirates of the Curry Bean' to which all parents and children will be invited. We are also planning some exciting STEM challenges across the school.

As a whole school we will come together on the 1st of July for our End of Term Assembly and celebrate our Achievements and Awards!

Interdisciplinary Learning (IDL)

Our class IDL topic this term is **Preparing for the Future**

'Preparing for the Future' will support pupils to prepare for transitions into high school while building knowledge around a range of careers to create links between subject knowledge and skills for work. They will also build upon term 3's sustainability learning as they think about what their future world may look like. We aim to build pupils' awareness of how they can confidently contribute to society through a range of occupations, with an additional focus on the importance of STEM industries and how careers in these fields contribute to shaping the world of the future through innovation. Pupils will learn about the skills and personal attributes required for different roles.

Our class novel this term is: *The Wrong Shoes* by Tom Percival. The story follows a boy (Will) as he navigates poverty, bullying and difficult moral choices. Pupils will have lots of opportunity to reflect on the different circumstances that may influence the emotions and behaviours of those around them, as well as thinking critically about their own perception of others.

Curriculum Areas and Subjects:

Reading	<p>We will be focussing on the following reading targets</p> <p>At my own level, I can:</p> <ul style="list-style-type: none">• Build my reading fluency by increasing my knowledge of prefixes and suffixes.• Respond to literal, inferential and evaluative questions.• Make connections between fiction texts and my own/others' experiences.
Writing – Response/Review	<p>We will be focussing on the following writing targets</p> <p>At my own level, I can:</p> <ul style="list-style-type: none">• Use a wide range of adjectives when reviewing a product or performance across different categories.• Make judgements and recommendations with explanations.• Use brackets, dashes, and commas when giving an afterthought or an explanation.• Spell with increasing accuracy by applying spelling strategies and rules
Listening & talking	<p>We will be focussing on the following listening and talking targets</p> <p>At my own level, I can:</p> <ul style="list-style-type: none">• Demonstrate listening through body language, eye contact, and engaging in questioning with visitors.• Make effective notes when listening for key information.• Present a group charity presentation and feedback on others.• Present an independent presentation on 'my future aspirations', focusing on speaking with clarity and volume.
Spanish (L3)	<p>We will be learning to:</p> <ul style="list-style-type: none">• Read, write and count numbers to 31.• To use basic greetings and discuss feelings.• Recognise basic vocabulary for the topics of: days, weather, months, colours, family, and pets.

<p>Number, money & measure</p>	<p>We will be focussing on the following number, money and measure targets At my own level I can:</p> <p><u>Equations and Patterns</u> At my own level I can:</p> <ul style="list-style-type: none"> • Solves simple algebraic equations with one variable • Applies knowledge of multiples, square numbers and triangular numbers <p><u>Number Processes</u> At my own level I can:</p> <ul style="list-style-type: none"> • Multiplies whole numbers by two digit numbers. • Multiplies and divides decimal fractions by 10, 100 and 1000. • Multiplies and divides decimal fractions to two decimal places by a single digit.
<p>Shape, position & movement</p>	<p>We will be focussing on the following shape, position and movement targets</p> <p><u>Measurement</u> At my own level I can:</p> <ul style="list-style-type: none"> • Calculate the volume of cubes and cuboids. • Estimate and measure accurately using: millimetres (mm), centimetres (cm), metres (m) and kilometres (km); mass in grams (g) and kilograms (kg); and capacity in millilitres (ml) and litres (l). • Convert between common units of measurement. • Read a variety of scales accurately.
<p>Information handling</p>	<p>We will be focussing on the following information handling targets</p> <ul style="list-style-type: none"> • Analyse different types of graphs. • Create graphs to show a range of data. • Identify the mean, median and most within a set of data.
<p>Health and Wellbeing: The 7 wellbeing indicators – Safe, Healthy, Achieving, Nurtured, Active, Respected, Responsible and Included (SHANARRI) are covered throughout the year. To support a shared language when managing emotions, we use the Emotion Works resource and 5 Point Scale. We support this learning at Balmullo Primary through:</p>	
<p>Health and Wellbeing</p>	<p>We will be focussing on the following health and wellbeing targets:</p> <p><u>RSHP</u></p> <ul style="list-style-type: none"> • To describe human conception from birth. • To understand that the body changes with puberty which can impact on feelings and behaviours. • To give reasons why contraception might be used (for example, to prevent pregnancy or infection). <p><u>Emotion Works</u></p> <ul style="list-style-type: none"> • To identify some social and personal influences through the purple cog. • To analyse characters using the emotion works cogs. <p><u>Meta-Skills</u></p> <ul style="list-style-type: none"> • To develop <i>critical thinking</i> and <i>creativity</i> through STEM. (Innovation) • To develop the understanding of our own and others' feelings through character studies and RSHP. (Social Intelligence) • To develop focus and initiative by using smart start to focus on personal target development. (Self Management)

Physical Education:	<p>We will be focussing on the following PE targets <u>Athletics and Racket Sports</u> At my own level I can:</p> <ul style="list-style-type: none"> • Execute movements with increasing control. • Aim towards a partner or target with increasing accuracy. • Demonstrate the correct jumping technique for hurdles. • Vary my speed between a light jog, running, and sprinting, dependent on distance to be travelled. • <p>Our gym days this term are: Tuesday (outdoor gym day) and Thursday</p> <p>Please come to school on your outdoor PE day, wearing plain gym kit – black or grey tracksuit bottoms/leggings or shorts, a plain white t-shirt and school jumper. No cropped tops/vests or football tops/strips.</p>
Expressive Arts – Art, Drama, Dance and Music	<p>We will be focussing on the following expressive arts targets At my own level I can:</p> <ul style="list-style-type: none"> • Act in role as a character using voice and movement. • Sing as part of an ensemble as part of a performance. • Use a range of materials to design set, props, and costumes.
Science	<p>We will be focussing on the following science targets:</p> <ul style="list-style-type: none"> • To construct and use simple branched keys that can be used to identify plants or animals. • To investigate the properties of trees and plants. • To investigate our environmental and carbon footprint. • To explore the concept of photosynthesis.
Social Studies	<p>We will be focussing on the following Social Studies targets:</p> <ul style="list-style-type: none"> • To identify impacts of human activity on the environment. • To explore a range of occupations. • To think critically about the positive and negative impact human actions have on the planet.
Technologies Whole school STEM focus – The Engineering Design Process	<p>We will be focussing on the following technologies targets At my own level I can:</p> <ul style="list-style-type: none"> • Programme code instructions with variables to control movements. • Sketch, plan, and execute designs when working towards a given brief. • Measures accurately using appropriate units and tools when using a range of methods to join materials. • Our school STEM challenge for term 4 is: Towers and Viewing Platforms
Religious & Moral Education	<p>We will be focussing on the following RME targets At my own level I can:</p> <ul style="list-style-type: none"> • Retell stories from the bible through drama. • Engage with discussions about Christianity. • Learn about key figures in Christianity.

Supporting learning at home:

Homework will be issued on a Tuesday and be returned the following Monday.

This term, P6/7 are being asked to work on a personal project, aligning with their focus on non-fiction text features (details to follow). They will also have a reading book and spelling words to practice. We ask that your child's reading book comes with them to school **every** day, as they will be taking part in guided reading activities in school as well as at home. Pupils must bring in their Ipad charged in order to fully participate in learning activities as we move into a blended learning approach.

- Children can practise their number bonds and times tables by playing [Hit the Button - Quick fire maths practise for 6-11 year olds](#)
- Encourage reading, watching and listening to a range of genres. Consider getting your child a library card and visiting our local libraries in Newport, St Andrews or Cupar. The mobile library visits Balmullo every fortnight on a Monday. [East-25.8.25-24.10.25.pdf](#)
- Share stories and encourage your child to Read for Pleasure as often as possible. Parents can also login to Oxford Owl for an excellent selection of e books [Free eBook library | Oxford Owl from Oxford University Press](#)

Further Information:

Check out our school website for lots of useful information as well as our Parent Weekly Updates - [Balmullo Primary School](#)

In 2024, we reviewed our Relationship and Behaviour Policy in light of the United Nations Rights of the Child. We produced a Rationale, 'Our Behaviour Blueprint' and a children's version to support our approach and reinforce expected behaviours for adults and children. Click on the link to view [Our Positive Relationship and Behaviour Policy | Balmullo Primary School](#)

'Be Friendly, Be Ambitious, Be Responsible, Show Respect'

